

N.M. Oil Cons. Div-Dist. 2
1301 W. Grand Avenue
Artesia, NM 88210

UNITED STATES
DEPARTMENT OF THE INTERIOR
BUREAU OF LAND MANAGEMENT

APPLICATION FOR PERMIT TO DRILL OR REENTER

OMB No. 1004-0136
Expires November 30, 2000

5. Lease Serial No.

NM-57274

6. If Indian, Allottee or Tribe Name

7. If Unit or CA Agreement, Name and No.

8. Lease Name and Well No.

Haracz "AMO" Federal #1

9. APN/Well No.

1a. Type of Work: ☒ DRILL ☐ REENTER

b. Type of Well: ☒ Oil Well ☐ Gas Well ☐ Other ☐ Single Zone ☐ Multiple Zone

2. Name of Operator

Yates Petroleum Corporation

3A. Address **105 South Fourth Street
Artesia, New Mexico 88210**

3b. Phone No. (include area code)
(505) 748-1471

10. Field and Pool, or Exploratory
Cotton Draw Brushy Canyon

4. Location of Well (Report location clearly and in accordance with any State requirements. *)

At surface **660' FSL & 660' FWL, Unit M**

At proposed prod. Zone **Same**

Section 24, T24S-R31E

14. Distance in miles and direction from nearest town or post office*

Approximately 29 miles SE of Loving, New Mexico

12. County or Parish

Eddy County

13. State

NM

15. Distance from proposed*
location to nearest
property or lease line, ft.
(Also to nearest drig. unit line, if any)

16. No. of Acres in lease

1743.52

17. Spacing Unit dedicated to this well

40

18. Distance from proposed location*
to nearest well, drilling, completed,
applied for, on this lease, ft.

19. Proposed Depth
8600'

20. BLM/BIA Bond No. on file
585997

21. Elevations (Show whether DF, KDB, RT, GL, etc.)

3554' GL

22. Approximate date work will start*

ASAP

23. Estimated duration

45 days

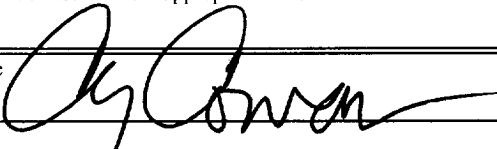
24. Attachments

The following, completed in accordance with the requirements of Onshore Oil and Gas Order No. 1, shall be attached to this form:

1. Well plat certified by a registered surveyor.
2. A Drilling Plan.
3. A Surface Use Plan (if the location is on National Forest System Lands, the SUPO shall be filed with the appropriate Forest Service Office).

4. Bond to cover the operations unless covered by an existing bond on file (see Item 20 above).
5. Operator certification.
6. Such other site specific information and/or plans as may be required by the authorized office.

25. Signature



Name (Printed/Typed)

Cy Cowan

Date

3/20/02

Title:

Regulatory Agent

Approved by (Signature)

/S/ JOE G. LARA

Name (Printed/Typed)

/S/ JOE G. LARA

Date

APR 24 2002

Title

ACTING FIELD MANAGER

Office

CARLSBAD FIELD OFFICE

Application approval does not warrant or certify that the applicant holds legal or equitable title to those rights in the subject lease which would entitle the applicant to conduct operations thereon.

Conditions of approval, if any, are attached.

APPROVAL FOR 1 YEAR

Title 18 U.S.C. Section 1001 and Title 43 U.S.C. Section 1212, make it a crime for any person knowingly and willfully to make to any department or agency of the United States any false, fictitious or fraudulent statements or representations as to any matter within its jurisdiction.

*(Instructions on reverse)

Carlsbad Controlled Water Basin

**APPROVAL SUBJECT TO
GENERAL REQUIREMENTS AND
SPECIAL STIPULATIONS
ATTACHED**

RECEIVED

2002 MAR 22 PM 3:06

BUFFALO POST OFFICE

1000 1000 1000

1000

OIL CONSERVATION DIVISION
P.O. Box 2088
Santa Fe, New Mexico 87504-2088

☐ AMENDED REPORT

WELL LOCATION AND ACREAGE DEDICATION PLAT

API Number		Pool Code	Pool Name
			Cotton Draw Brushy Canyon
Property Code	Property Name		Well Number
	Haracz "AMO" Federal		1
OGHD No.	Operator Name		Elevation
025575	Yates Petroleum Corporation		3554'

Surface Location

UL or lot No.	Section	Township	Range	Lot Idn	Feet from the	North/South line	Feet from the	East/West line	County
M	24	24S	31E		660'	South	660'	West	Eddy

Bottom Hole Location If Different From Surface

UL or Lot No.	Section	Township	Range	Lot Idn	Feet from the	North/South line	Feet from the	East/West line	County
40									

NO ALLOWABLE WILL BE ASSIGNED TO THIS COMPLETION UNTIL ALL INTERESTS HAVE BEEN CONSOLIDATED
OR A NON-STANDARD UNIT HAS BEEN APPROVED BY THE DIVISION

<div style="border: 2px solid black; padding: 5px; margin-top: 10px;"> <p style="font-size: 1.2em; margin: 0;">NM-57274</p> </div>			

OPERATOR CERTIFICATION

I hereby certify the information contained herein is true and complete to the best of my knowledge and belief.

Signature _____

Cy Cowan
Printed Name _____

Regulatory Agent
Title _____

3/20/02
Date _____

SURVEYOR CERTIFICATION

I hereby certify that the well location shown on this plat was plotted from field notes of actual surveys made by me or under my supervision, and that the same is true and correct to the best of my belief.

REFER TO ORIGINAL PLAT

Date Surveyed _____

Signature & Seal of
Professional Surveyor _____

Certificate No. Herschel L. Jones RLS 3540

GENERAL SURVEYING COMPANY

Submit to Appropriate
District Office
State Lease - 4 copies
Fee Lease - 3 copies

State of New Mexico
Energy, Minerals and Natural Resources Department

Form C-102
Revised 1-1-89

OIL CONSERVATION DIVISION

DISTRICT I
P.O. Box 1980, Hobbs, NM 88240

P.O. Box 2088

Santa Fe, New Mexico 87504-2088

DISTRICT II
P.O. Drawer DD, Artesia, NM 88210

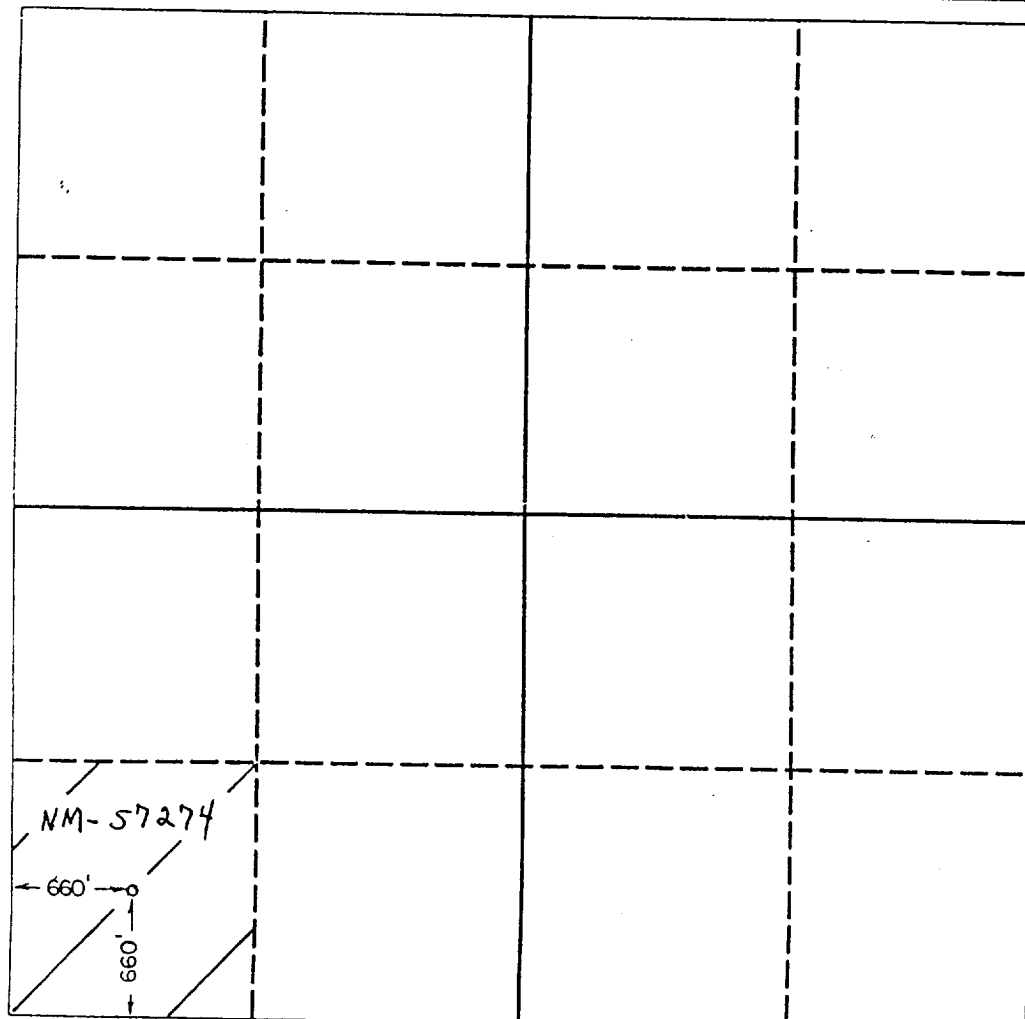
DISTRICT III
1000 Rio Brazos Rd., Aztec, NM 87410

WELL LOCATION AND ACREAGE DEDICATION PLAT

All Distances must be from the outer boundaries of the section

Operator YATES PETROLEUM CORPORATION			Lease HARACZ "AMO" FEDERAL		Well No. 1
Unit Letter M	Section 24	Township 24 SOUTH	Range 31 EAST	County EDDY	
Actual Footage Location of Well: 660 feet from the SOUTH line and 660 feet from the WEST line					
Ground level Elev. 3554	Producing Formation DELAWARE		Pool COTTON DRAW BRUSHY CANYON	Dedicated Acreage: 40 Acres	

1. Outline the acreage dedicated to the subject well by colored pencil or hatchure marks on the plat below.
2. If more than one lease is dedicated to the well, outline each and identify the ownership thereof (both as to working interest and royalty).
3. If more than one lease of different ownership is dedicated to the well, have the interest of all owners been consolidated by communitization, unitization, force-pooling, etc.?
☐ Yes ☐ No If answer is "yes" type of consolidation _____
If answer is "no" list the owners and tract descriptions which have actually been consolidated. (Use reverse side of this form if necessary.) _____
No allowable will be assigned to the well until all interests have been consolidated (by communitization, unitization, forced-pooling, or otherwise) or until a non-standard unit, eliminating such interest, has been approved by the Division.



OPERATOR CERTIFICATION

I hereby certify that the information contained herein is true and complete to the best of my knowledge and belief.

Signature *Clifton R. May*

Printed Name
Clifton R. May

Position
Permit Agent

Company
Yates Petroleum Corporation

Date
2/24/93

SURVEYOR CERTIFICATION

I hereby certify that the well location shown on this plat was plotted from field notes of actual surveys made by me or under my supervision, and that the same is true and correct to the best of my knowledge and belief.

Date Surveyed
2/11/93

Signature & Seal of
Professional Surveyor

Herschel Jones
HERSCHEL JONES
3640
Certificate No. 3640

VATES PETROLEUM CORPORATION

Haracz "AMO" Federal #1

660' FSL and 660' FWL

Section 24-T24S-R31E

Eddy County, New Mexico

1. The estimated tops of geologic markers are as follows:

Rustler	680'
Top Salt	1017
Base Salt	4315'
Bell Canyon	4537'
Cherry Canyon	5510'
Brushy Canyon	7310'
Bone Spring	8410'
TD	8600'

2. The estimated depths at which anticipated water, oil or gas formations are expected to be encountered:

Water: 150'
Oil or Gas: 4537', 7310' and 8410'.

3. Pressure Control Equipment: BOPE will be installed on the 13 3/8" casing and rated for 3000 BOP systems will be consistent with API RP 53. Pressure tests will be conducted before drilling out from under all casing strings which are set and cemented in place. Blowout Preventor controls will be installed prior to drilling the surface plug and will remain in use until the well is completed or abandoned. Preventors will be inspected and operated at least daily to ensure good mechanical working order, and this inspection recorded on the daily drilling report. See Exhibit B.

Auxiliary Equipment:

A. Auxiliary Equipment: Kelly cock, pit level indicators, flow sensor equipment and a sub with full opening valve to fit the drill pipe and collars will be available on the rig floor in the open position at all times for use when kelly is not in use.

4. THE PROPOSED CASING AND CEMENTING PROGRAM:

A. Casing Program: (All New)

<u>Hole Size</u>	<u>Casing Size</u>	<u>Wt./Ft</u>	<u>Grade</u>	<u>Coupling</u>	<u>Interval</u>	<u>Length</u>
17 1/2"	13 3/8"	54.50	J-55	ST&C	0-700' 830'	700'
11"	8 5/8"	32#	J-55	ST&C	0-4200'	4200'
11"	8 5/8"	32#	HC-80	LT&C	4200-4400'	200'
7 7/8"	5 1/2"	17#	J-55	LT&C	0-1000'	1000'
7 7/8"	5 1/2"	15.5#	J-55	LT&C	1000'-7600'	6600'
7 7/8"	5 1/2"	17#	J-55	LT&C	7600'-8600'	1000'

Minimum Casing Design Factors: Collapse 1.125, Burst 1.0, Joint Strength 1.8

Carlsbad Controlled Water Basin

B. CEMENTING PROGRAM:

Surface casing: 350 sx Pacesetter Lite "C" w/ 1/4 # Cellocel & 3% CaCl₂
(Yld 1.84 Wt. 12.7) & 250 sx Class "C" w/2% CaCl₂
(YLD 1.84 WT 14.8) Cement calculated to circulate to surface.

Intermediate Casing: 1100 sx Pacesetter Lite "C" w/ 1/4 # Cellocel + 3% CaCl₂.
(Yld 1.84 Wt 12.7). + 250 sx. Class "C" w/2% CaCl₂.
(Yld 1.32 Wt. 14.8) Cement calculated to circulate to surface.

Production Casing: Stage I: 150 sx "H" w/8# sx CSE, +0.6% CF-14 + 5# Sack Gilsonite (Yld 1.76 Wt. 13.6), Cement calculated to 7400' DV Tool; set at approx. 7400'.

Stage II: 600 sx Lite "C" w/5# Gilsonite, 1/4# sx Cellocel, + 0.5% CF-14 (Yld 1.84 Wt 12.7) + 200 "H" w/o 0.6% CF-14 8# sx CSE, 5 sx Gilsonite (Yld 1.76 Wt. 13.6) Cement calculated to tie back intermediate casing 100'.

5. MUD PROGRAM AND AUXILIARY EQUIPMENT:

<u>Interval</u>	<u>Type</u>	<u>Weight</u>	<u>Viscosity</u>	<u>Fluid Loss</u>
0-700'	FW/Gel	8.4-8.9	32-36	N/C
700'-4415'	Brine	10.0	28	N/C
4415'-8300'	Cut Brine	8.6-9.3	28	<15cc

Sufficient mud material(s) to maintain mud properties, control lost circulation and contain a blow out will be available at the well site during drilling operations. Mud will be checked hourly by rig personnel.

6. EVALUATION PROGRAM:

Samples: Every 10' from surface casing to TD.

Logging: CNL-LTD from TD to casing with GR-CNL up to surface; DLL from TD to casing w/Rxo.

Coring: None.

DST's: None.

7. ABNORMAL CONDITIONS, BOTTOM HOLE PRESSURE, AND POTENTIAL HAZARDS:

Anticipated BHP:

From: 0	TO: 700'	Anticipated Max. BHP: 255	PSI
From: 700'	TO: 4415'	Anticipated Max. BHP: 1610	PSI
From: 4415'	TO: 8600'	Anticipated Max. BHP: 3130	PSI

No abnormal pressures or temperatures are anticipated.

Lost Circulation Zones Anticipated: None

H₂S Zones Anticipated: None

Maximum Bottom Hole Temperature: 140F

8. ANTICIPATED STARTING DATE:

Plans are to drill this well as soon as possible after receiving approval. It should take approximately 15 days to drill the well with completion taking another 20 days.

MULTI-POINT SURFACE USE AND OPERATIONS PLAN
ATES PETROLEUM CORPORATION
Haracz "AMO" Federal #1
660' FSL and 660' FWL
Section 24-T24S-R31E
Eddy County, New Mexico

This plan is submitted with Form 3160-3, Application for Permit to Drill, covering the above described well. The purpose of this plan is to describe the location of the proposed well, the proposed construction activities and operations plan, the magnitude of the surface disturbance involved and the procedures to be followed in rehabilitating the surface after completion of the operations, so that a complete appraisal can be made of the environmental effect associated with the operations.

1. EXISTING ROADS:

Exhibit A is a portion of the BLM map showing the well and roads in the vicinity of the proposed location. The proposed well site is located approximately 29 miles southeast of Loving, New Mexico and the access route to the location is indicated in red and green on Exhibit A.

DIRECTIONS:

Go east out of Carlsbad on Pecos Hwy. Turn left on Hwy 31 and go to 128. Turn right on 128 and go approx. 20 miles to Buck Jackson Rd. Turn right and go approx. 0.5 of a mile and turn left. Follow caliche road approximately 2.3 miles and turn right. Go approximately 0.5 of a mile and new access will start here and go north around water tank.

NOTE: Need to Amend NM-87831 to include additional road in Sec. 24-24S-31E. Additional road marked in green on Exhibit A and is approximately 2,500' in length.

2. PLANNED ACCESS ROAD:

- A. The proposed new access will go south for approx. 2000' in length from the point of origin to the southeast corner of the drilling pad. The road will lie in a westerly direction.
- B. The new road will be 14 feet in width (driving surface) and will be adequately drained to control runoff and soil erosion.
- C. The new road will be bladed with drainage on one side. One traffic turnout will be built.
- D. The route of the road is visible.
- E. Existing roads will be maintained in the same or better condition.

3. LOCATION OF EXISTING WELL:

- A. There is drilling activity within a one-mile radius of the well site.
- B. Exhibit D shows existing wells within a one-mile radius of the proposed well site.

4. LOCATION OF EXISTING AND/OR PROPOSED FACILITIES:

- A. There are no production facilities on this lease at the present time.
- B. In the event that the well is productive, the necessary production facilities will be installed on the drilling pad. If the well is productive oil, a gas or diesel self-contained unit will be used to provide the necessary power. No power will be required if the well is productive of gas.

5. LOCATION AND TYPE OF WATER SUPPLY:

- A. It is planned to drill the proposed well with a fresh water system. The water will be obtained from commercial sources and will be hauled to the location by truck over the existing and proposed roads shown in Exhibit A.

6. SOURCE OF CONSTRUCTION MATERIALS:

Pit in Sec. 7-T24S-R32E

7. METHODS OF HANDLING WASTE DISPOSAL:

- A. Drill cuttings will be disposed of in the reserve pits.
- B. Drilling fluids will be allowed to evaporate in the reserve pits until the pits are dry.
- C. Water produced during operations will be collected in tanks until hauled to an approved disposal system, or separate disposal application will be submitted.
- D. Oil produced during operations will be stored in tanks until sold.
- E. Current laws and regulations pertaining to the disposal of human waste will be complied with.
- F. All trash, junk, and other waste materials will be contained in trash cages or bins to prevent scattering and will be removed and deposited in an approved sanitary landfill. Burial on site is not approved.

8. ANCILLARY FACILITIES:

None

9. WELLSITE LAYOUT:

- A. Exhibit C shows the relative location and dimensions of the well pad, The reserve pits, the location of the drilling equipment, rig orientation and access road approach.
- B. The reserve pits will be plastic lined.
- C. A 400' x 400' area has been staked and flagged.

10. PLANS FOR RESTORATION:

- A. After finishing drilling and/or completion operations, all equipment and other material not needed for further operations will be removed. The location will be cleaned of all trash and junk to leave the well site in as aesthetically pleasing a condition as possible.
- B. Unguarded pits, if any, containing fluids will be fenced until they have dried and been leveled.
- C. If the proposed well is non-productive, all rehabilitation and/or vegetation requirements of the Bureau of Land Management will be complied with and will be accomplished as expeditiously as possible. All pits will be filled level after they have evaporated and dried.

11. SURFACE OWNERSHIP: Federal Surface, Administered by BLM, Carlsbad, New Mexico.
12. OTHER INFORMATION:
- A. Topography: Refer to the existing archaeological report for a description of the topography, flora, fauna, soil characteristics, dwellings, historical and cultural sites.
- B. The primary surface use is for grazing.
13. OPERATOR'S REPRESENTATIVE:
- | | |
|-----------------------------|---|
| A. Through A.P.D. Approval: | B. Through Drilling Operations, Completions and Production: |
| Cy Cowan, Regulatory Agent | Pinson McWhorter, |
| Yates Petroleum Corporation | Operations Manager |
| 105 South Fourth Street | Yates Petroleum Corporation |
| Artesia, New Mexico 88210 | 105 South Fourth Street |
| Phone (505) 748-1471 | Artesia, New Mexico 88210 |
| | Phone (505) 748-1471 |

14. CERTIFICATION:

I hereby certify that I, or persons under my direct supervision, have inspected the proposed drill site and access route, that I am familiar with the conditions which presently exist; that the statements made in this plan are to the best of my knowledge, true and correct; and, that the work associated with the operations proposed herein will be performed by Yates Petroleum Corporation and its contractors and subcontractors in conformity with this plan and the terms and conditions under which it is approved. This statement is subject to the provisions of 18 U.S.C. 1001 for the filing of a false statement.

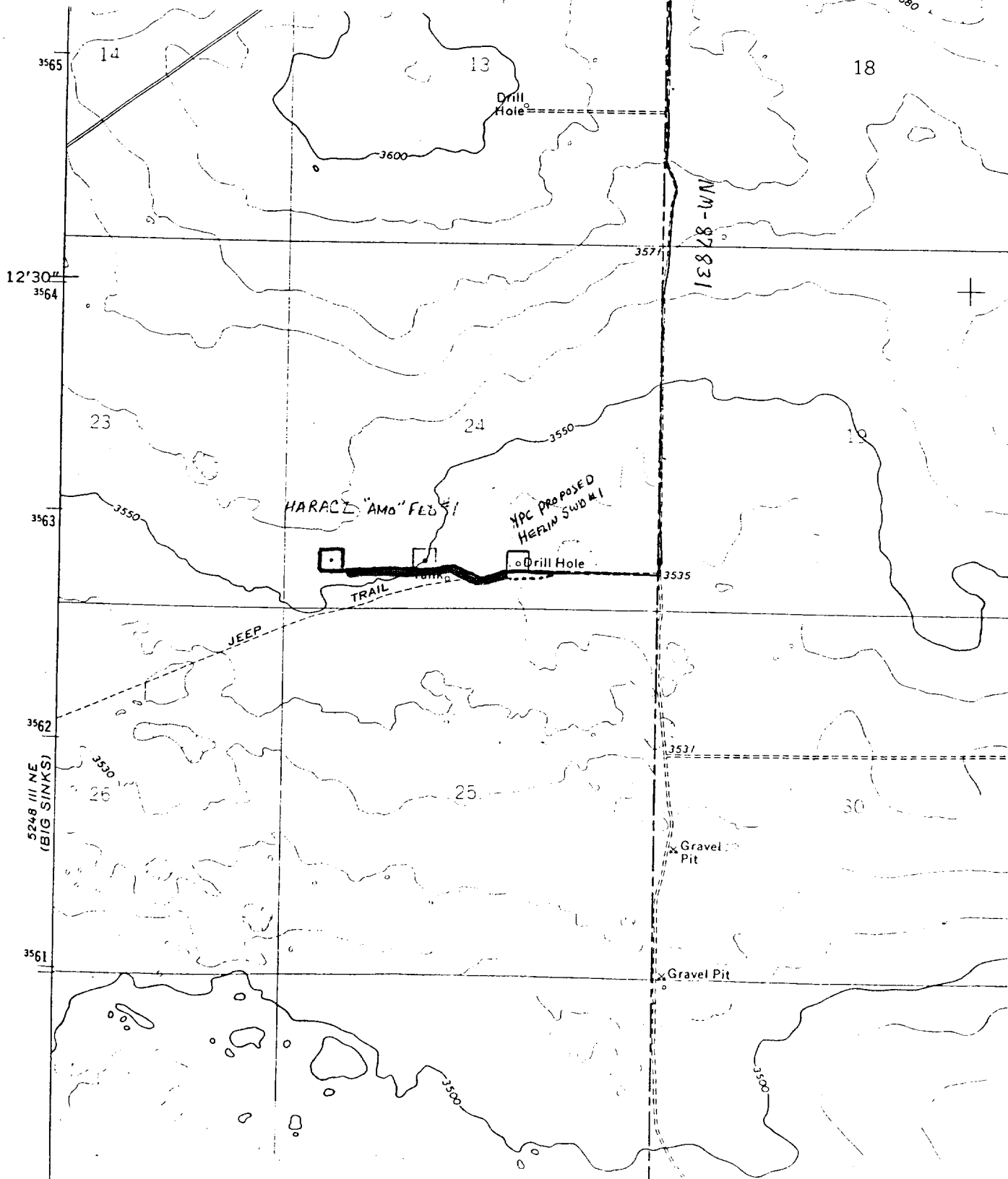
3/20/2002

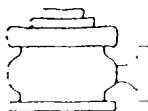

Regulatory Agent

YATES PETROLEUM CORPORATION

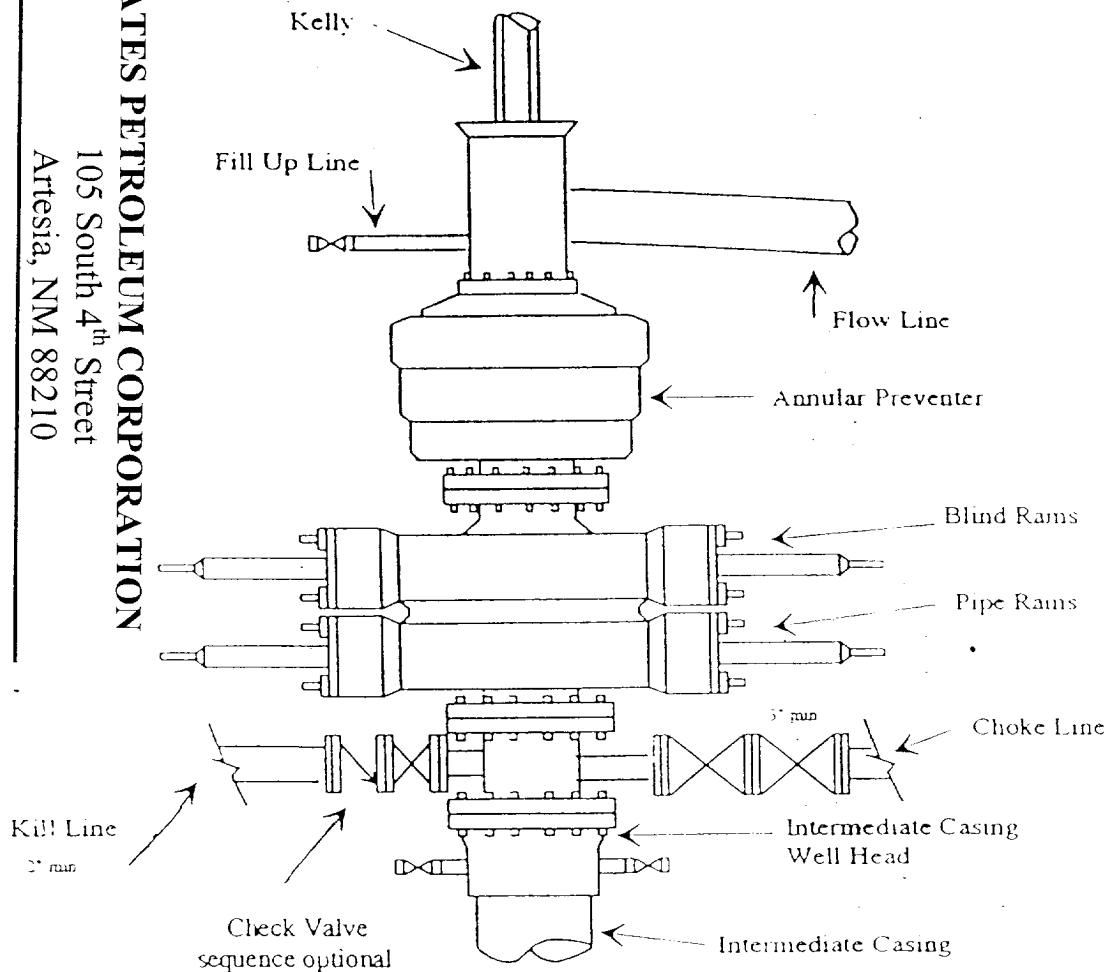
105 South 4th Street
Artesia, NM 88210

Haracz "AMO" Federal #1
660' FSL & 660' FWL
Section 24-T24S-R31E
Eddy County, New Mexico
Exhibit "A"





Typical 3,000 psi Pressure System
Schematic
Annular with Double Ram Preventer Stack



YATES PETROLEUM CORPORATION

105 South 4th Street
Artesia, NM 88210

Haracz "AMO" Federal #1

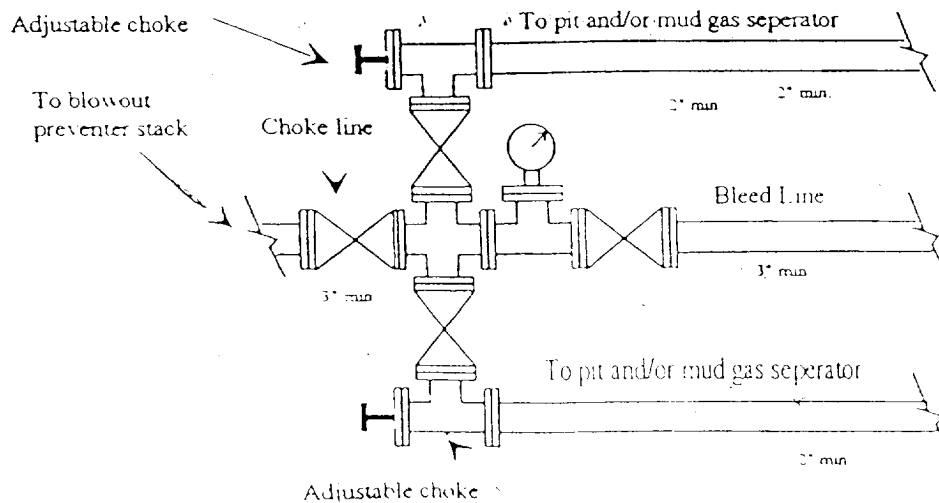
660' FSL & 660' FWL

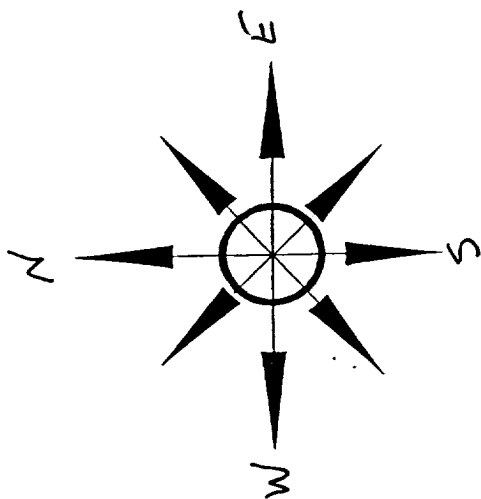
Section 24-T24S-R31E

Eddy County, New Mexico

Exhibit "B"

Typical 3,000 psi choke manifold assembly with at least these minimum features





Yates Petroleum Corporation

Location Layout for Permian Basin
Up to 12,000'

YATES PETROLEUM CORPORATION

105 South 4th Street

Artesia, NM 88210

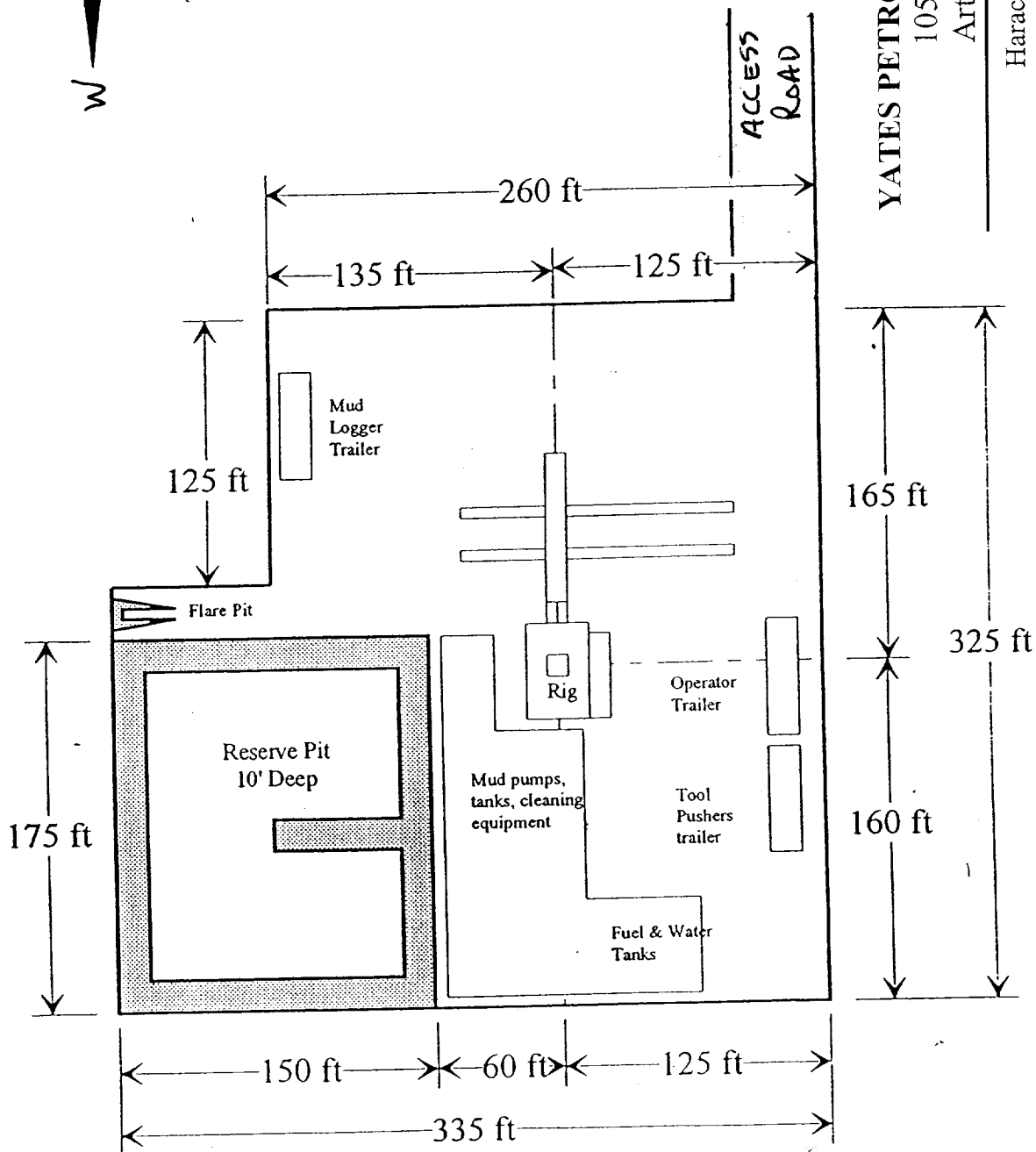
Haracz "AMO" Federal #1

660' FSL & 660' FWL

Section 24-T24S-R31E

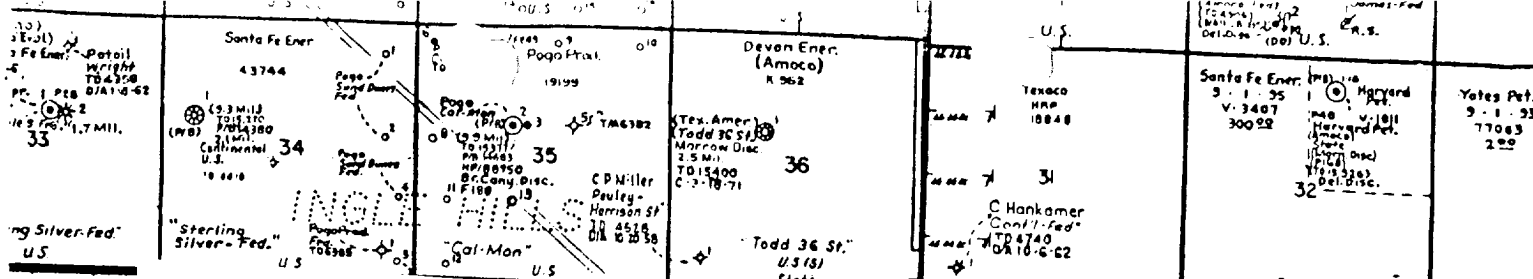
Eddy County, New Mexico

Exhibit "C"



Distance from Well Head to Reserve Pit will vary between rigs

The above dimension should be a maximum



YATES PETROLEUM CORPORATION

105 South 4th Street
Artesia, NM 88210

Haracz "AMO" Federal #1
660' FSL & 660' FWL
Section 24-T24S-R31E
Eddy County, New Mexico
Exhibit "D"

