

Submit to Appropriate  
District Office  
State Lease - 6 copies  
Fee Lease - 5 copies

State of New Mexico  
Geology, Minerals and Natural Resources Department

Form C-101  
Revised 1-1-89

OIL CONSERVATION DIVISION

P.O. Box 2088  
Santa Fe, New Mexico 87504-2088

SEP 16 1993

DISTRICT I  
P.O. Box 1980, Hobbs, NM 88240

DISTRICT II  
P.O. Drawer DD, Artesia, NM 88210

DISTRICT III  
1000 Rio Brazos Rd., Aztec, NM 87410

API NO. (assigned by OCD on New Wells)

30-015-27448 27437

5. Indicate Type of Lease

STATE ☒ FEE ☐

6. State Oil & Gas Lease No.

E-5313

7. Lease Name or Unit Agreement Name

Beauregard ANP St. Com

8. Well No.

1

9. Pool name or Wildcat

Illinois Camp Morrow

APPLICATION FOR PERMIT TO DRILL, DEEPEN OR PLUG BACK

1a. Type of Work:

DRILL ☒

RE-ENTER ☐

DEEPEN ☐

PLUG BACK ☐

b. Type of Well:

OIL  
WELL ☐

GAS  
WELL ☒

OTHER ☐

SINGLE  
ZONE ☐

MULTIPLE  
ZONE ☐

2. Name of Operator

Yates Petroleum Corporation

3. Address of Operator

105 South Fourth Street, Artesia, New Mexico 88210

4. Well Location

Unit Letter B : 660' Feet From The North Line and 1980' Feet From The East Li:

Section 14

Township 18S

Range 27E

NMPM

Eddy

County

10. Proposed Depth

10,500

11. Formation

Morrow

12. Rotary or C.T.

Rotary

13. Elevations (Show whether DF, RT, GR, etc.)

3542' GR

14. Kind & Status Plug. Bond

Blanket

15. Drilling Contractor

Undesignated

16. Approx. Date Work will start

ASAP

17.

PROPOSED CASING AND CEMENT PROGRAM

SIZE OF HOLE	SIZE OF CASING	WEIGHT PER FOOT	SETTING DEPTH	SACKS OF CEMENT	EST. TOP
17 1/2"	13 3/8"	48#	400'	400 sks	Circulate
12 1/4"	9 5/8"	36#	2600'	700 sks	Tie back - 13
8 3/4"	5 1/2"	17#	TD	600 sks	Above top of A

Yates Petroleum Corporation proposes to drill the subject well to sufficient depth to evaluate the Morrow formation. After reaching TD, logs will be run and casing set if well is productive. Perforate, test and stimulate as necessary to establish production.

MUD PROGRAM: FW/LCM to 400'; FW to 2600'; Cut Brine/Starch to TD.

BOPE PROGRAM: BOP will be installed on the 9 5/8" casing.

NOTE: This well was originally approved as Mewbourne Oil Company's Chalk Bluff "1 4" St. #1 on May 17, 1993.

Second: This location is NSL for east half dedication. A hearing is being set up.

IN ABOVE SPACE DESCRIBE PROPOSED PROGRAM: IF PROPOSAL IS TO DEEPEN OR PLUG BACK, GIVE DATA ON PRESENT PRODUCTIVE ZONE AND PROPOSED NEW PRODUCTIVE ZONE. GIVE BLOWOUT PREVENTER PROGRAM, IF ANY.

I hereby certify that the information above is true and complete to the best of my knowledge and belief.

SIGNATURE

Clifton R. May

TITLE

Permit Agent

DATE

7/16/93

TYPE OR PRINT NAME

Clifton R. May

748-1471

TELEPHONE NO.

(This space for State Use)

ORIGINAL SIGNED BY

MIKE WILLIAMS

SUPERVISOR, DISTRICT II

APPROVED BY

TITLE

DATE

SEP 17 1993

CONDITIONS OF APPROVAL, IF ANY:

NOTIFY N.M.O.C.D. IN SUFFICIENT  
TIME TO WITNESS CEMENTING THE  
Casing

APPROVAL VALID FOR 180 DAYS  
PERMIT EXPIRES 3-17-94  
UNLESS DRILLING UNDERWAY

USL APPROVAL  
CASE # 10791  
A-9956

# OIL CONSERVATION DIVISION

P.O. Box 2088

Santa Fe, New Mexico 87504-2088

## DISTRICT I

P.O. Box 1980, Hobbs, NM 88240

## DISTRICT II

P.O. Drawer DD, Artesia, NM 88210

## DISTRICT III

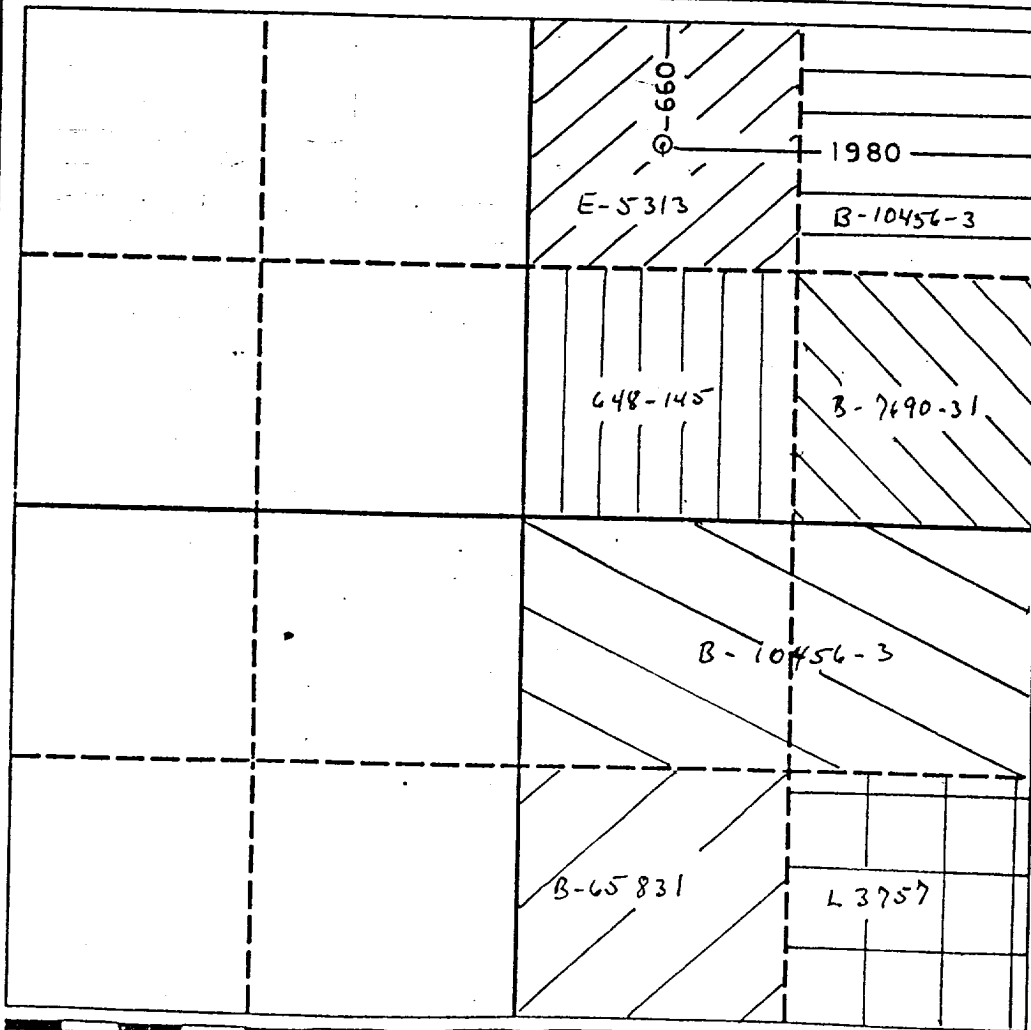
1000 Rio Brazos Rd., Aztec, NM 87410

## WELL LOCATION AND ACREAGE DEDICATION PLAT

All Distances must be from the outer boundaries of the section

Operator Yates Petroleum Corporation			Lease Beauregard ANP St. Com		Well No. 1
Unit Letter B	Section 14	Township 18S	Range 27E	County Eddy	
Actual Footage Location of Well: 660' feet from the North line and 1980' feet from the East line					
Ground level Elev. 3542' GR		Producing Formation MORROW		Pool ILLINOIS CAMP MORROW	Dedicated Acreage: 320 Acres

- Outline the acreage dedicated to the subject well by colored pencil or hatchure marks on the plat below.
- If more than one lease is dedicated to the well, outline each and identify the ownership thereof (both as to working interest and royalty).
- If more than one lease of different ownership is dedicated to the well, have the interest of all owners been consolidated by communitization, unitization, force-pooling, etc.?  
☒ Yes ☐ No If answer is "yes" type of consolidation IS TO BE COMMUNITIZATION  
If answer is "no" list the owners and tract descriptions which have actually been consolidated. (Use reverse side of this form if necessary.)  
No allowable will be assigned to the well until all interests have been consolidated (by communitization, unitization, forced-pooling, or otherwise) or until a non-standard unit, eliminating such interest, has been approved by the Division.



### OPERATOR CERTIFICATION

I hereby certify that the information contained herein is true and complete to the best of my knowledge and belief.

Signature

Clifton R. May

Printed Name

Clifton R. May

Position

Permit Agent

Company

Yates Petroleum Corporation

Date

7/16/93

### SURVEYOR CERTIFICATION

I hereby certify that the well location shown on this plat was plotted from field notes of actual surveys made by me or under my supervision, and that the same is true and correct to the best of my knowledge and belief.

Date Surveyed

REFER TO ORIGINAL PLAT

Signature & Seal of  
Professional Surveyor

Certificate No.

# OIL CONSERVATION DIVISION

P.O. Box 2088

Santa Fe, New Mexico 87504-2088

## DISTRICT I

P.O. Box 1980, Hobbs, NM 88240

## DISTRICT II

P.O. Drawer DD, Artesia, NM 88210

## DISTRICT III

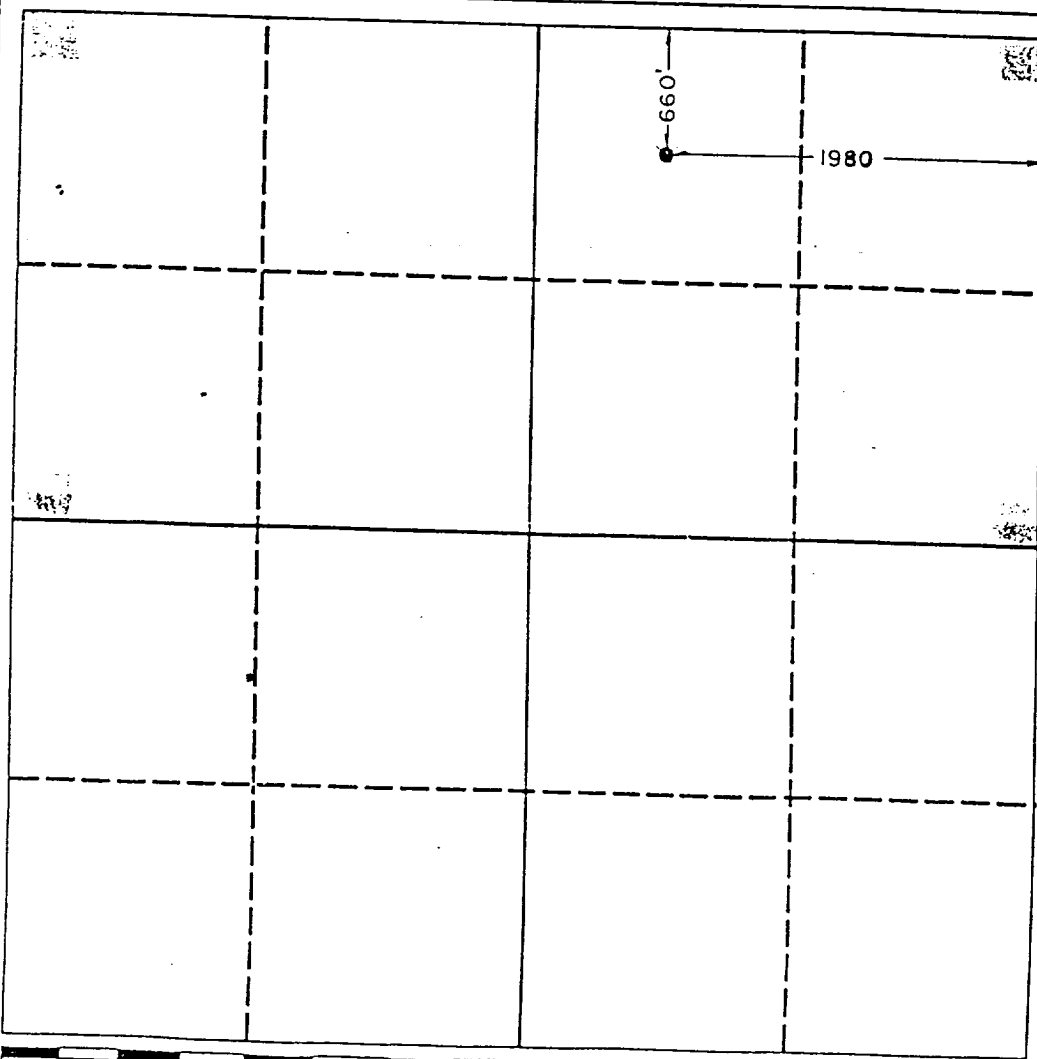
1000 Rio Brazos Rd., Aztec, NM 87410

## WELL LOCATION AND ACREAGE DEDICATION PLAT

All Distances must be from the outer boundaries of the section

Operator <b>MEWBOURNE OIL COMPANY</b>			Lease <b>CHALK BLUFF 14 STATE</b>		Well No. <b>1</b>
Unit Letter <b>B</b>	Section <b>14</b>	Township <b>18 SOUTH</b>	Range <b>27 EAST</b>	County <b>EDDY</b>	
Actual Footage Location of Well: <b>1980</b> feet from the <b>EAST</b> line and <b>660</b> feet from the <b>NORTH</b> line					
Ground level Elev. <b>3542</b>	Producing Formation <b>Morrow</b>		Pool <b>Illinois Camp Morrow</b>	Dedicated Acreage: <b>320</b> Acres	

1. Outline the acreage dedicated to the subject well by colored pencil or hatchure marks on the plat below.
2. If more than one lease is dedicated to the well, outline each and identify the ownership thereof (both as to working interest and royalty).
3. If more than one lease of different ownership is dedicated to the well, have the interest of all owners been consolidated by communitization, unitization, force-pooling, etc.?  
☒ Yes ☐ No If answer is "yes" type of consolidation Joint Operating Agreement  
If answer is "no" list the owners and tract descriptions which have actually been consolidated. (Use reverse side of this form if necessary).  
No allowable will be assigned to the well until all interests have been consolidated (by communitization, unitization, forced-pooling, or otherwise) or until a non-standard unit, eliminating such interest, has been approved by the Division.



### OPERATOR CERTIFICATION

I hereby certify that the information contained herein is true and complete to the best of my knowledge and belief.

Signature Bill Pierce  
Printed Name **Bill Pierce**  
Position **Drilling Supt.**  
Company **Mewbourne Oil Co.**  
Date **May 12, 1993**

### SURVEYOR CERTIFICATION

I hereby certify that the well location shown on this plat was plotted from field notes of actual surveys made by me or under my supervision, and that the same is true and correct to the best of my knowledge and belief.

Date Surveyed **5/05/93**  
Signature & Seal of Professional Surveyor  
Herschel L. Jones  
Certificate No. **8643**

Submit to Appropriate  
District Office  
State Lease - 6 copies  
Fee Lease - 5 copies

State of New Mexico  
Energy, Minerals and Natural Resources Department

Form C-101  
Revised 1-1-89

c/sr  
BUT  
509

OIL CONSERVATION DIVISION

P.O. Box 2088

Santa Fe, New Mexico 87504-2088

DISTRICT I  
P.O. Box 1980, Hobbs, NM 88240

DISTRICT II  
P.O. Drawer DD, Artesia, NM 88210

DISTRICT III  
1000 Rio Brazos Rd., Aztec, NM 87410

MAY - 4 1993

API NO. (assigned by OCD on New Wells)

30-015-27437

5. Indicate Type of Lease

STATE ☒

FEE ☐

6. State Oil & Gas Lease No.

E-5313

APPLICATION FOR PERMIT TO DRILL, DEEPEN, OR PLUG BACK

1a. Type of Work:

DRILL ☒

RE-ENTER ☐

DEEPEN ☐

PLUG BACK ☐

b. Type of Well:

OIL  
WELL ☐

GAS  
WELL ☒

OTHER ☐

SINGLE  
ZONE ☒

MULTIPLE  
ZONE ☐

7. Lease Name or Unit Agreement Name

Chalk Bluff "14" State

2. Name of Operator

Mewbourne Oil Company

8. Well No.

1

3. Address of Operator

P.O. Box 5270 Hobbs, New Mexico 88241

9. Pool name or Wildcat

Illinois Camp Morrow

4. Well Location

Unit Letter B : 660 Feet From The North Line and 1980 Feet From The East Line

Section 14

Township 18S

Range 27E

NMPM

Eddy

County

10. Proposed Depth

10,500'

11. Formation

Morrow

12. Rotary or C.T.

Rotary

13. Elevations (Show whether DF, RT, GR, etc.)

3542' GR

14. Kind & Status Plug. Bond

Blanket-On-File

15. Drilling Contractor

Peterson Drlg. Co.

16. Approx. Date Work will start

July 1, 1993

17.

PROPOSED CASING AND CEMENT PROGRAM

Drill to T.D. 10,500'

SIZE OF HOLE	SIZE OF CASING	WEIGHT PER FOOT	SETTING DEPTH	SACKS OF CEMENT	EST. TOP
17-1/2"	13-3/8"	48#	400'-	400 sks.	Surface
12-1/4"	9-5/8"	36#	2600'-	700 sks.	Tie back into surface
8-3/4"	5-1/2"	17#	10500'-	600 sks.	Bring above top of Abo.

Mud Program:

0' - 400' Spud mud w/fresh water gel, LCM as needed.  
400' - 2,600' Fresh water gel & lime. LCM as needed.  
2,600' - 9,200' Cut brine with lime for pH control. WL -NC.  
9,200' - 10,300' Cut brine w/Drispac, salt gel, lime, soda ash and starch. Wt. 9.2-9.6 ppg, WL 10 cc or less, Vis. 32-36. Raise wt. accordingly if abnormal pressures are encountered.

BOP Program:

1500 Series Double Ram Hydraulic BOP w/900 Series Hydril from Intermediate csg. to T.D. 900 Series Hydril on Surface csg. to Intermediate csg. point. PVT system, mud-gas separator, rotating head from Wolfcamp to T.D.

Gas is not dedicated.

IN ABOVE SPACE DESCRIBE PROPOSED PROGRAM: IF PROPOSAL IS TO DEEPEN OR PLUG BACK, GIVE DATA ON PRESENT PRODUCTIVE ZONE AND PROPOSED NEW PRODUCTIVE ZONE. GIVE BLOWOUT PREVENTER PROGRAM, IF ANY.

I hereby certify that the information above is true and complete to the best of my knowledge and belief.

SIGNATURE

Bill Pierce

TITLE

Drilling Superintendent

DATE

05/14/93

(505)

TYPE OR PRINT NAME

Bill Pierce

TELEPHONE NO.

393-5905

(This space for State Use)

APPROVED BY

Mark Bailey

TITLE

Asst

DATE

5-17-93

CONDITIONS OF APPROVAL, IF ANY:

APPROVAL VALID FOR 30 DAYS  
PERMIT EXPIRES 4-12-94  
IN THE EVENT OF A VIOLATION OF THE  
OIL CONSERVATION DIVISION

NO. OF DAYS OF DELAY IN THE  
OIL CONSERVATION DIVISION  
13/2

# OIL CONSERVATION DIVISION

P.O. Box 2088  
Santa Fe, New Mexico 87504-2088

## DISTRICT I

P.O. Box 1980, Hobbs, NM 88240

## DISTRICT II

P.O. Drawer DD, Artesia, NM 88210

## DISTRICT III

1000 Rio Brazos Rd., Aztec, NM 87410

## WELL LOCATION AND ACREAGE DEDICATION PLAT

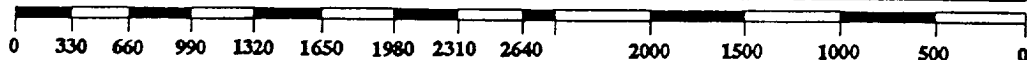
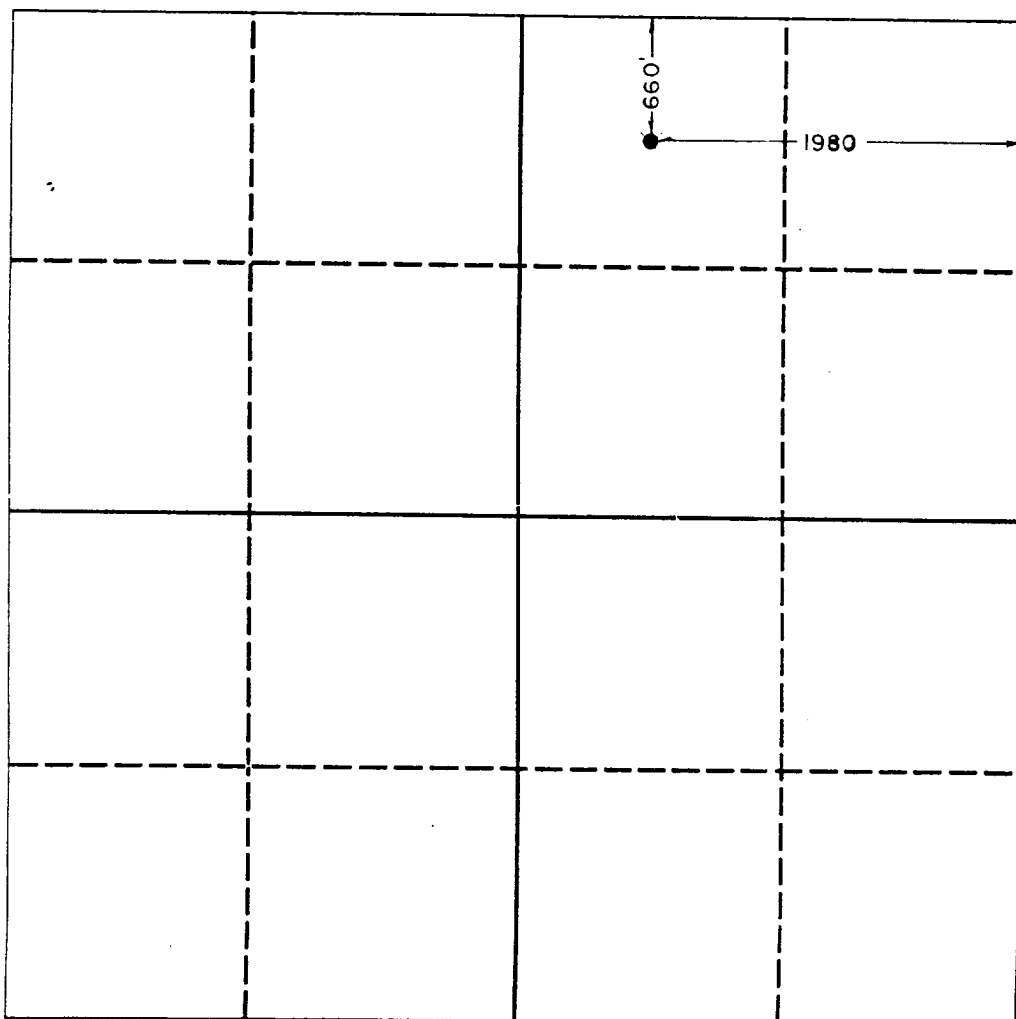
All Distances must be from the outer boundaries of the section

Operator <b>MEWBOURNE OIL COMPANY</b>			Lease <b>CHALK BLUFF 14 STATE</b>		Well No. <b>1</b>
Unit Letter <b>B</b>	Section <b>14</b>	Township <b>18 SOUTH</b>	Range <b>27 EAST</b>	County <b>EDDY</b>	
Actual Footage Location of Well: <b>1980</b> feet from the <b>EAST</b> line and <b>660</b> feet from the <b>NORTH</b> line					
Ground level Elev. <b>3542</b>	Producing Formation <b>Morrow</b>		Pool <b>Illinois Camp Morrow</b>	Dedicated Acreage: <b>320</b> Acres	

- Outline the acreage dedicated to the subject well by colored pencil or hatchure marks on the plat below.
- If more than one lease is dedicated to the well, outline each and identify the ownership thereof (both as to working interest and royalty).
- If more than one lease of different ownership is dedicated to the well, have the interest of all owners been consolidated by communitization, unitization, force-pooling, etc.?  
☒ Yes ☐ No If answer is "yes" type of consolidation Joint Operating Agreement

If answer is "no" list the owners and tract descriptions which have actually been consolidated. (Use reverse side of this form if necessary.)

No allowable will be assigned to the well until all interests have been consolidated (by communitization, unitization, forced-pooling, or otherwise) or until a non-standard unit, eliminating such interest, has been approved by the Division.



### OPERATOR CERTIFICATION

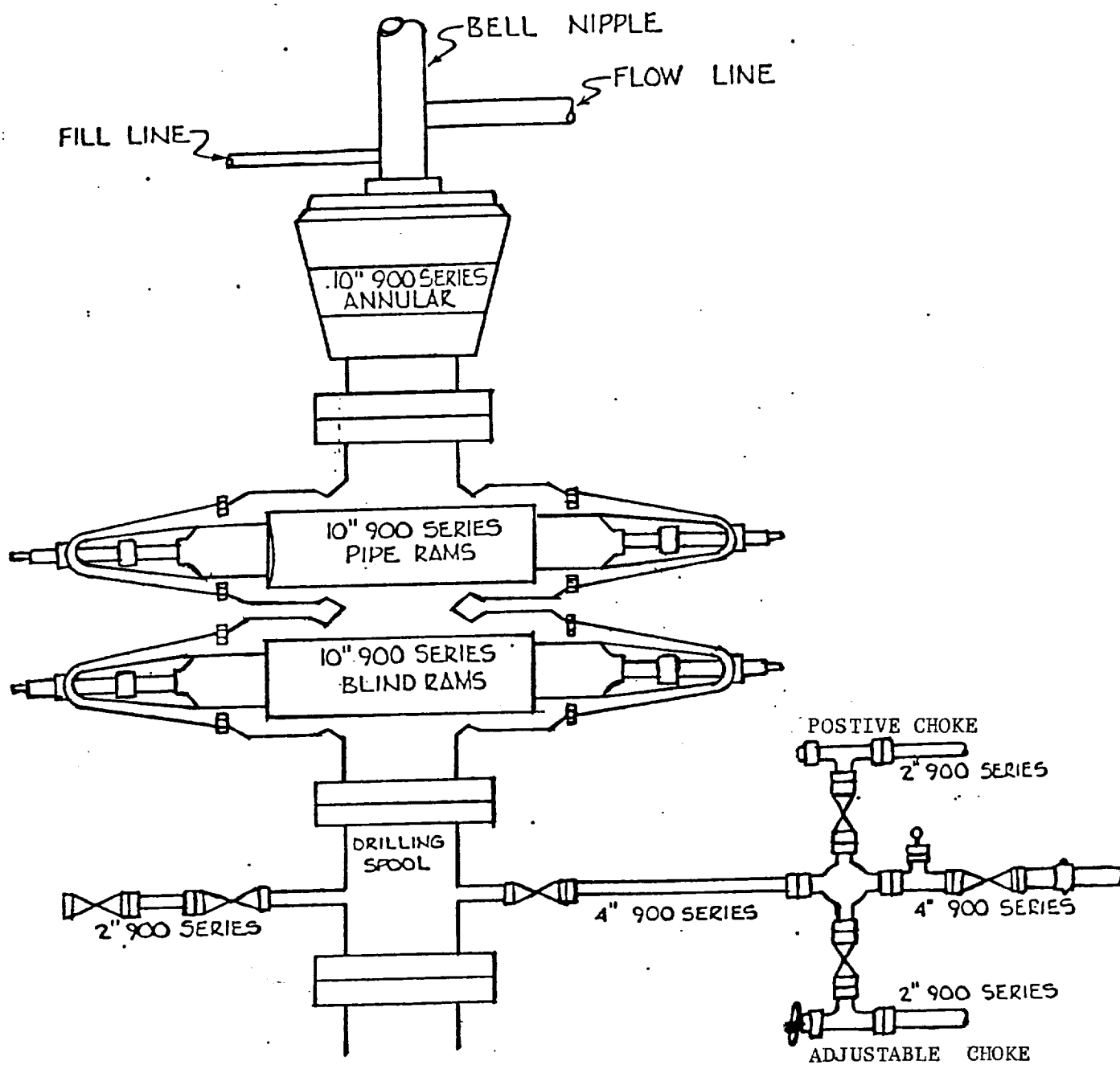
I hereby certify that the information contained herein is true and complete to the best of my knowledge and belief.

Signature Bill Pierce  
Printed Name **Bill Pierce**  
Position **Drilling Supt.**  
Company **Mewbourne Oil Co.**  
Date **May 12, 1993**

### SURVEYOR CERTIFICATION

I hereby certify that the well location shown on this plat was plotted from field notes of actual surveys made by me or under my supervision, and that the same is true and correct to the best of my knowledge and belief.

Date Surveyed **5/05/93**  
Signature & Seal of Professional Surveyor  
Herschel L. Jones  
Certificate No. **3640**



Mewbourne Oil Company  
 Chalk Bluff "14" State #1  
 660' FNL & 1980' FEL  
 Sec. 14-T18S-R27E  
 Eddy County, New Mexico  
 Lease # E-5313

BOP Schematic