

Submit to Appropriate  
District Office  
State Lease - 6 copies  
Fee Lease - 5 copies

State of New Mexico  
Energy, Minerals and Natural Resources Department

Form C-101  
Revised 1-1-89

OIL CONSERVATION DIVISION

DISTRICT I  
P.O. Box 1980, Hobbs, NM 88240

P.O. Box 2088  
Santa Fe, New Mexico 87504-2088

DISTRICT II  
P.O. Drawer DD, Artesia, NM 88210

DISTRICT III  
1000 Rio Brazos Rd., Aztec, NM 87410

API NO. (assigned by OCD on New Wells)

20-00-27483

5. Indicate Type of Lease

STATE ☒

FEE ☐

6. State Oil & Gas Lease No.

648

APPLICATION FOR PERMIT TO DRILL, DEEPEN, OR PLUG BACK

1a. Type of Work:

DRILL ☒

RE-ENTER ☐

DEEPEN ☐

PLUG BACK ☐

b. Type of Well:

OIL  
WELL ☒

GAS  
WELL ☐

OTHER ☐

SINGLE  
ZONE ☐

MULTIPLE  
ZONE ☐

7. Lease Name or Unit Agreement Name

East Millman Unit

2. Name of Operator

SDX Resources, Inc.

8. Well No.

217

3. Address of Operator

Post Office Box 5061, Midland, Texas 79704

9. Pool name or Wildcat

East Millman-Q-GR-SA

4. Well Location

Unit Letter

G

: 2310

Feet From The

E

Line and

1650

Feet From The

N

Line

Section

15

Township

19S

Range

28E

NMPM

Eddy

County

10. Proposed Depth

2900'

11. Formation

Grayburg

12. Rotary or C.T.

Rotary

13. Elevations (Show whether DF, RT, GR, etc.)

3510' Grd.

14. Kind & Status Plug. Bond

Blanket

15. Drilling Contractor

Capstar

16. Approx. Date Work will start

July 1, 1993

17.

PROPOSED CASING AND CEMENT PROGRAM

SIZE OF HOLE	SIZE OF CASING	WEIGHT PER FOOT	SETTING DEPTH	SACKS OF CEMENT	EST. TOP
12 1/4"	8 5/8"	24#	350'±	300	Surface
7 7/8"	5 1/2"	15.50#	2850'±/-	300	Surface

Plan to drill a 12 1/4" hole to approximately 350' and set 8 5/8" surface casing. Circulate "C" cement. Drill 7 7/8" hole to TD. Run open hole logs (LDT-CNL-GR and DLL). Run 5 1/2" casing and circulate 50/50 POZ "C" cement. Perforate the Grayburg-Queen and stimulate as necessary for optimum production.

Mud Program: Fresh water mud 0' - 350'.  
Salt water mud 350' - TD.

10-13  
N.M.R.T.

IN ABOVE SPACE DESCRIBE PROPOSED PROGRAM: IF PROPOSAL IS TO DEEPEN OR PLUG BACK, GIVE DATA ON PRESENT PRODUCTIVE ZONE AND PROPOSED NEW PRODUCTIVE ZONE. GIVE BLOWOUT PREVENTER PROGRAM, IF ANY.

I hereby certify that the information above is true and complete to the best of my knowledge and belief.

SIGNATURE

Rebecca Robinson

TITLE

Agent

DATE

6-23-93

TYPE OR PRINT NAME

Rebecca Robinson

TELEPHONE NO.

(This space for State Use)

APPROVED BY

Mark Kelly

TITLE

GEOLOGIST

DATE

6-24-93

CONDITIONS OF APPROVAL, IF ANY:

PERMIT VALID FOR 30 DAYS  
PERMIT EXPIRES 7-24-93  
CHIEF OF THE UNDERWAY

Submit to Appropriate  
District Office  
State Lease - 4 copies  
Fee Lease - 3 copies

State of New Mexico  
Energy, Minerals and Natural Resources Department

Form C-102  
Revised 1-1-89

**OIL CONSERVATION DIVISION**

DISTRICT I  
P.O. Box 1980, Hobbs, NM 88240

P.O. Box 2088

Santa Fe, New Mexico 87504-2088

DISTRICT II  
P.O. Drawer DD, Artesia, NM 88210

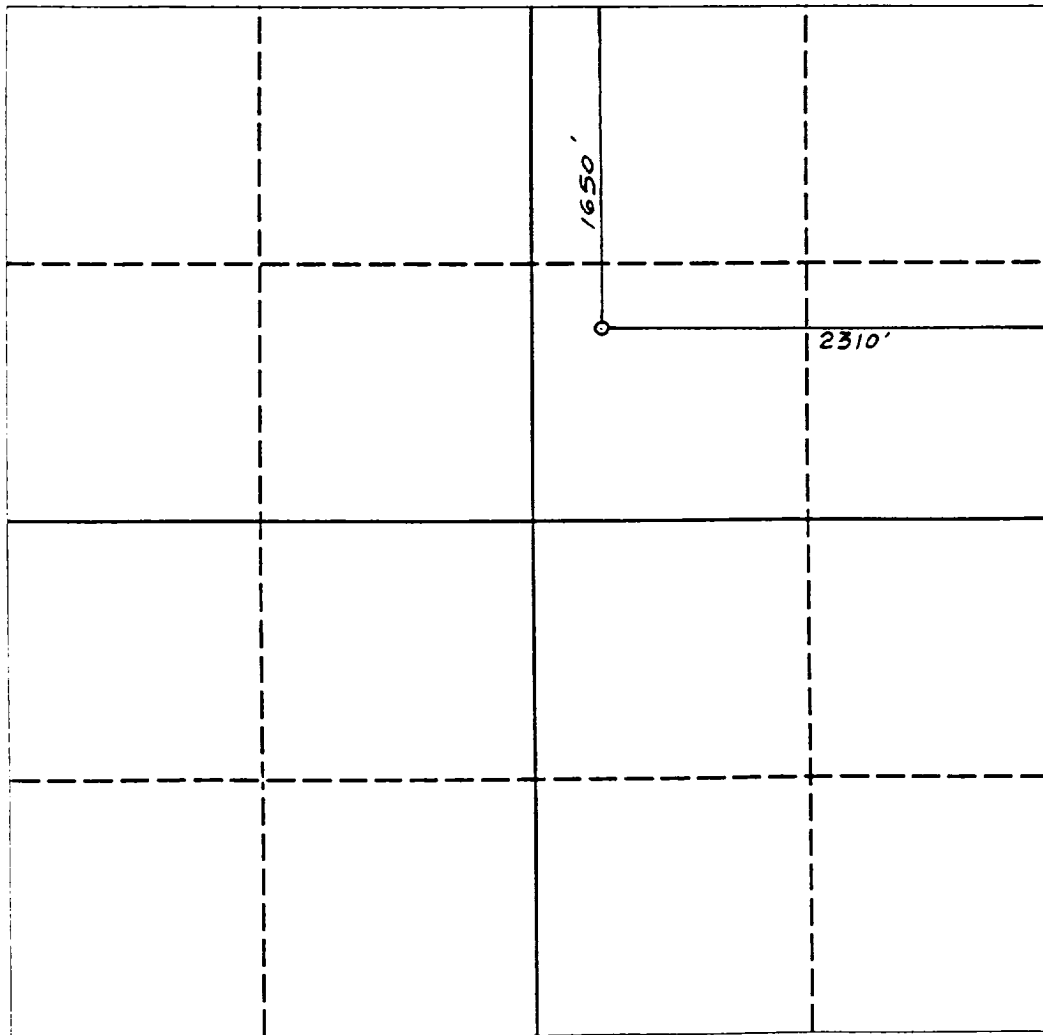
DISTRICT III  
1000 Rio Brazos Rd., Aztec, NM 87410

**WELL LOCATION AND ACREAGE DEDICATION PLAT**

All Distances must be from the outer boundaries of the section

Operator <b>SDX RESOURCES, INC.</b>			Lease <b>EAST MILLMAN UNIT</b>		Well No. <b>217</b>
Unit Letter <b>G</b>	Section <b>15</b>	Township <b>19 SOUTH</b>	Range <b>28 EAST</b>	County <b>EDDY COUNTY, NM</b>	
Actual Footage Location of Well: <b>2310</b> feet from the <b>EAST</b> line and <b>1650</b> feet from the <b>NORTH</b> line					
Ground level Elev. <b>3510.</b>	Producing Formation <b>Q-GR-SA</b>		Pool <b>East Millman-Q-GR-SA</b>		Dedicated Acreage: <b>40</b> Acres

1. Outline the acreage dedicated to the subject well by colored pencil or hachure marks on the plat below.
2. If more than one lease is dedicated to the well, outline each and identify the ownership thereof (both as to working interest and royalty).
3. If more than one lease of different ownership is dedicated to the well, have the interest of all owners been consolidated by communitization, unitization, force-pooling, etc.?  
☐ Yes ☐ No If answer is "yes" type of consolidation \_\_\_\_\_  
If answer is "no" list the owners and tract descriptions which have actually been consolidated. (Use reverse side of this form if necessary). \_\_\_\_\_  
No allowable will be assigned to the well until all interests have been consolidated (by communitization, unitization, force-pooling, or otherwise) or until a non-standard unit, eliminating such interest, has been approved by the Division.



**OPERATOR CERTIFICATION**

I hereby certify that the information contained herein is true and complete to the best of my knowledge and belief.

Signature

Printed Name

Chuck Morgan

Position

Engineer

Company

SDX Resources, Inc.

Date

June 23, 1993

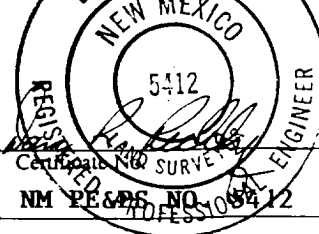
**SURVEYOR CERTIFICATION**

I hereby certify that the well location shown on this plat was plotted from field notes of actual surveys made by me or under my supervision, and that the same is true and correct to the best of my knowledge and belief.

Date Surveyed

JUNE 19, 1993

Signature of Professional Surveyor



0 330 660 990 1320 1650 1980 2310 2640 2000 1500 1000 500 0

