

Submit to Appropriate
District Office
State Lease - 4 copies
Fee Lease - 3 copies

State of New Mexico
Energy, Minerals and Natural Resources Department

Form C-102
Revised 1-1-89

OIL CONSERVATION DIVISION

P.O. Box 2088
Santa Fe, New Mexico 87504-2088

DISTRICT I
P.O. Box 1980, Hobbs, NM 88240

DISTRICT II
P.O. Drawer DD, Artesia, NM 88210

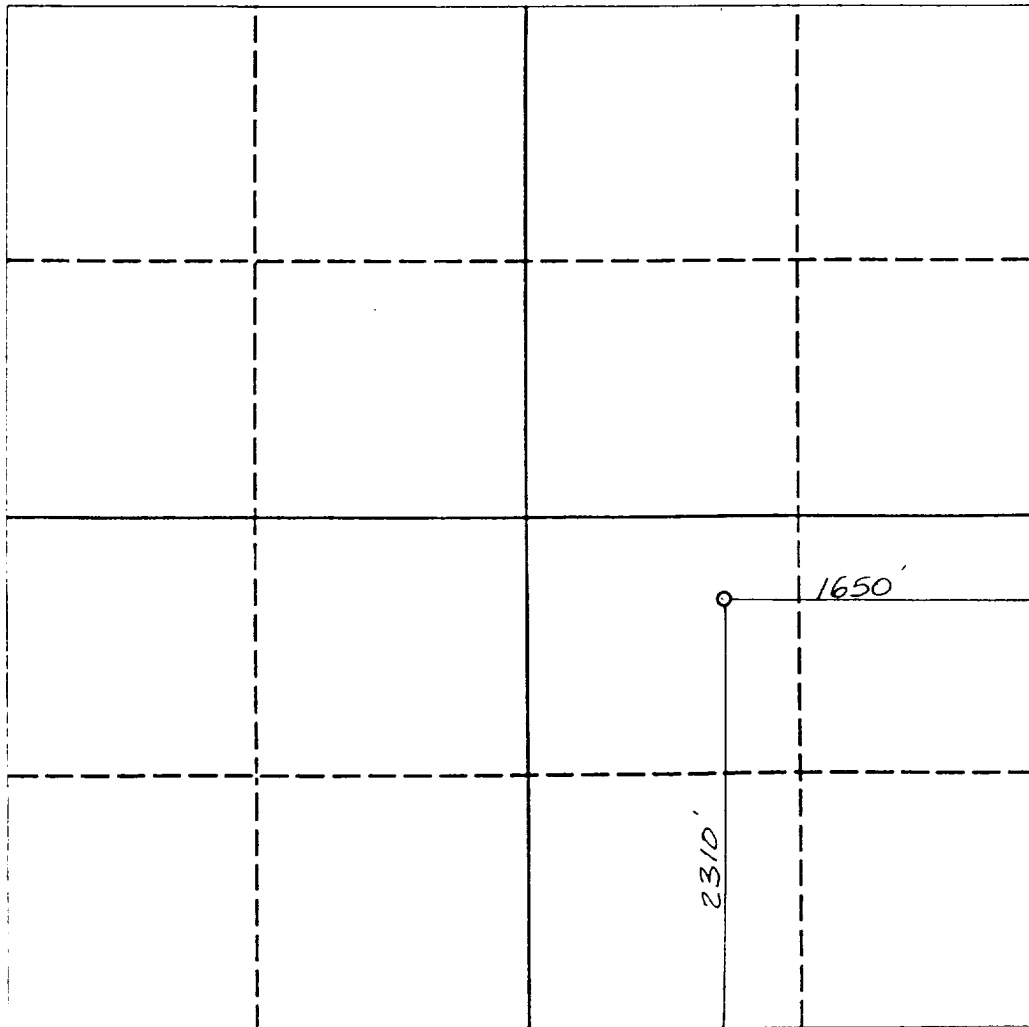
DISTRICT III
1000 Rio Brazos Rd., Aztec, NM 87410

WELL LOCATION AND ACREAGE DEDICATION PLAT

All Distances must be from the outer boundaries of the section

Operator OLYMPIC OIL & GAS CORPORATION			Lease SPIKE FEDERAL		Well No. 2
Unit Letter J	Section 24	Township 20 SOUTH	Range 28 EAST	County EDDY COUNTY, NM	
Actual Footage Location of Well: 1650 feet from the EAST line and 2310 feet from the SOUTH line					
Ground level Elev. 3243	Producing Formation Delaware		Pool Russell	Dedicated Acreage: 40 Acres	

1. Outline the acreage dedicated to the subject well by colored pencil or hachure marks on the plat below. (SSS)
2. If more than one lease is dedicated to the well, outline each and identify the ownership thereof (both as to working interest and royalty).
3. If more than one lease of different ownership is dedicated to the well, have the interest of all owners been consolidated by communitization, unitization, force-pooling, etc.?
☐ Yes ☐ No If answer is "yes" type of consolidation _____
If answer is "no" list the owners and tract descriptions which have actually been consolidated. (Use reverse side of this form if necessary). _____
No allowable will be assigned to the well until all interests have been consolidated (by communitization, unitization, forced-pooling, or otherwise) or until a non-standard unit, eliminating such interest, has been approved by the Division.



OPERATOR CERTIFICATION

I hereby certify that the information contained herein is true and complete to the best of my knowledge and belief.

Signature *Eddie Rodriguez*
Printed Name **Eddie Rodriguez**
Position **Senior Engineer**
Company **Olympic Oil & Gas Corp.**
Date **1-13-93**

SURVEYOR CERTIFICATION

I hereby certify that the well location shown on this plat was plotted from field notes of actual surveys made by me or under my supervision, and that the same is true and correct to the best of my knowledge and belief.

Date Surveyed
NOVEMBER 23, 1992

Signature & Seal of Professional Surveyor

[Signature]
Certification No. **5412**
NM PE&PS NO. **5412**

0 330 660 990 1320 1650 1980 2310 2640 2000 1500 1000 500 0