

OIL CONSERVATION DIVISION

P.O. Box 2088

Santa Fe, New Mexico 87504-2088

DISTRICT I

P.O. Box 1980, Hobbs, NM 88240

DISTRICT II

P.O. Drawer DD, Artesia, NM 88210

DISTRICT III

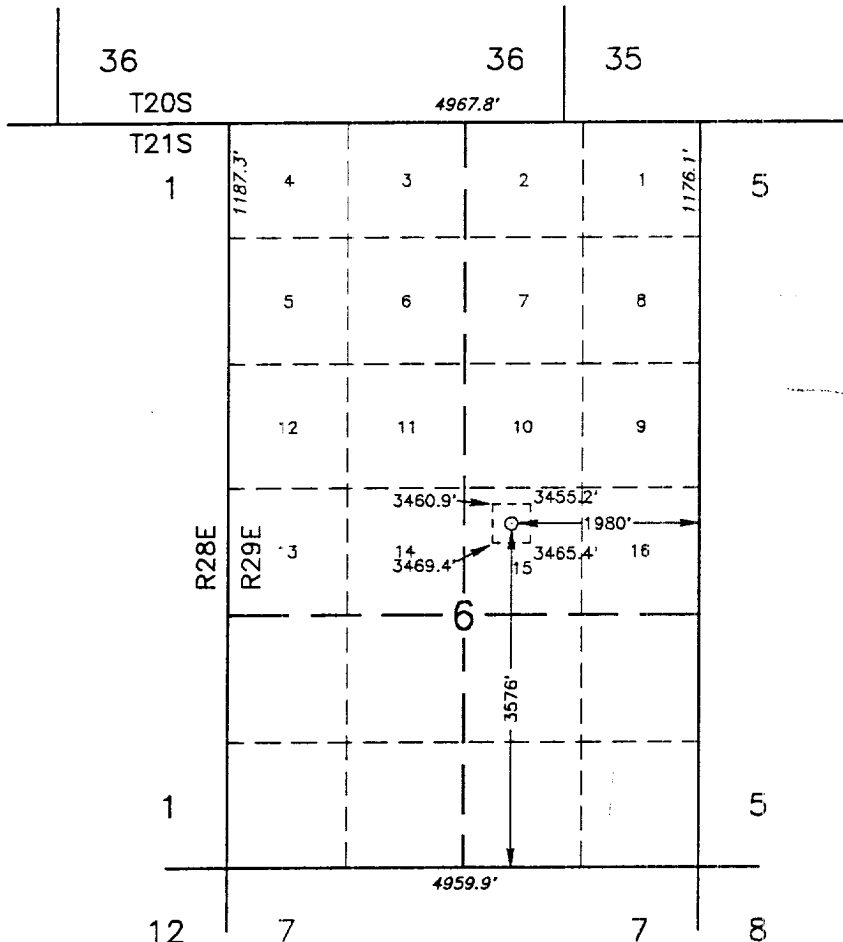
1000 Rio Brazos Rd., Aztec, NM 87410

WELL LOCATION AND ACREAGE DEDICATION PLAT

All Distances must be from the outer boundaries of the section

Operator BETTIS BROTHERS			Lease HARRIS FEDERAL "6"		Well No. 1
Unit Letter O	Section 6	Township 21 SOUTH	Range 29 EAST NMPM	County EDDY	
Actual Footage Location of Well: 3576 feet from the SOUTH line and 1980 feet from the EAST line					
Ground Level Elev. 3460.6'	Producing Formation Morrow		Pool Golden Lane		Dedicated Acreage: 300.78 Acres

- Outline the acreage dedicated to the subject well by colored pencil or hachure marks on the plat below.
- If more than one lease is dedicated to the well, outline each and identify the ownership thereof (both as to working interest and royalty).
- If more than one lease of different ownership is dedicated to the well, have the interest of all owners been consolidated by communitization, unitization, force-pooling, etc.?
☐ Yes ☐ No If answer is "yes" type of consolidation _____
If answer is "no" list of owners and tract descriptions which have actually been consolidated. (Use reverse side of this form necessary.)
No allowable will be assigned to the well unit all interests have been consolidated (by communitization, unitization, forced-pooling, otherwise) or until a non-standard unit, eliminating such interest, has been approved by the Division.



SCALE
1"=2000'

OPERATOR CERTIFICATION

I hereby certify the the information contained herein is true and complete to the best of my knowledge and belief.

Signature
G. Thane Akins
Printed Name
G. Thane Akins
Position
Agent
Company
Bettis Brothers, Inc.
Date
March 1, 1993

SURVEYOR CERTIFICATION

I hereby certify that the well location shown on this plat was plotted from field notes of actual surveys made by me or under my supervision, and that the same is true and correct to the best of my knowledge and belief.

Date Surveyed
FEBRUARY 10, 1993
Signature & Seal of Professional Surveyor
Certificate No. JOHN W. WEST 676
RONALD J. EIDSON 3239
PROFESSOR E. JONES 7977
93-11-0232