

Submit to Appropriate  
District Office  
State Lease - 6 copies  
Fee Lease - 5 copies

State of New Mexico  
Energy, Minerals and Natural Resources Department

Form C-101  
Revised 1-1-89

OIL CONSERVATION DIVISION

DISTRICT I  
P.O. Box 1980, Hobbs, NM 88240

DISTRICT II  
P.O. Drawer DD, Artesia, NM 88210

DISTRICT III  
1000 Rio Brazos Rd., Aztec, NM 87410

P.O. Box 2088  
Santa Fe, New Mexico 87504-2088

AUG - 2 1993

API NO. (assigned by OCD on New Wells)

30-015-27620

5. Indicate Type of Lease

STATE ☒

FEE ☐

6. State Oil & Gas Lease No.

647

APPLICATION FOR PERMIT TO DRILL, DEEPEN, OR PLUG BACK

1a. Type of Work:

DRILL ☒

RE-ENTER ☐

DEEPEN ☐

PLUG BACK ☐

b. Type of Well:

OIL  
WELL ☒

GAS  
WELL ☐

OTHER ☐

SINGLE  
ZONE ☐

MULTIPLE  
ZONE ☐

7. Lease Name or Unit Agreement Name

26-2  
Arco State 26-2

2. Name of Operator

SDX Resources, Inc.

8. Well No.

2

3. Address of Operator

Post Office Box 5061, Midland, Texas 79704

9. Pool name or Wildcat

Artesia-Q-GR-SA

4. Well Location

Unit Letter E : 2264 Feet From The N Line and 330 Feet From The W Line

Section

26

Township

17S

Range

28E

NMPM

Eddy

County

10. Proposed Depth

3500' +/-

11. Formation

GR-SA

12. Rotary or C.T.

Rotary

13. Elevations (Show whether DF, RT, GR, etc.)

3608' Grd.

14. Kind & Status Plug. Bond

Blanket

15. Drilling Contractor

Capstar

16. Approx. Date Work will start

August 15, 1993

17. PROPOSED CASING AND CEMENT PROGRAM

| SIZE OF HOLE | SIZE OF CASING | WEIGHT PER FOOT | SETTING DEPTH | SACKS OF CEMENT | EST. TOP |
|--------------|----------------|-----------------|---------------|-----------------|----------|
| 12 1/4"      | 8 5/8"         | 24#             | 350'          | 300             | Surface  |
| 7 7/8"       | 5 1/2"         | 15.50#          | 3500' +/-     | 300             | Surface  |

Plan to drill a 12 1/4" hole to approximately 350' and set 8 5/8" surface casing. Circulate "C" cement. Drill 7 7/8" hole to TD. Run open hole logs (LDT-CNL-GR and DLL). Run 5 1/2" casing and circulate 50/50 POZ "C" cement. Perforate the Grayburg-San Andres and stimulate as necessary for optimum production.

Mud Program: Fresh water mud 0' - 350'.  
Salt water mud 350' - TD.

IN ABOVE SPACE DESCRIBE PROPOSED PROGRAM: IF PROPOSAL IS TO DEEPEN OR PLUG BACK, GIVE DATA ON PRESENT PRODUCTIVE ZONE AND PROPOSED NEW PRODUCTIVE ZONE. GIVE BLOWOUT PREVENTER PROGRAM, IF ANY.

I hereby certify that the information above is true and complete to the best of my knowledge and belief.

SIGNATURE Rebecca Robinson TITLE Agent DATE 8-2-93

TYPE OR PRINT NAME Rebecca Robinson TELEPHONE NO. \_\_\_\_\_

(This space for State Use)

ORIGINAL SIGNED BY  
MIKE WILLIAMS  
SUPERVISOR, DISTRICT II

TITLE \_\_\_\_\_ DATE AUG 3 1993

APPROVED BY \_\_\_\_\_

CONDITIONS OF APPROVAL, IF ANY:

Submit to Appropriate  
District Office  
State Lease - 4 copies  
Fee Lease - 3 copies

State of New Mexico  
Energy, Minerals and Natural Resources Department

Form C-102  
Revised 1-1-89

**OIL CONSERVATION DIVISION**

P.O. Box 2088  
Santa Fe, New Mexico 87504-2088

**DISTRICT I**  
P.O. Box 1980, Hobbs, NM 88240

**DISTRICT II**  
P.O. Drawer DD, Artesia, NM 88210

**DISTRICT III**  
1000 Rio Brazos Rd., Aztec, NM 87410

**WELL LOCATION AND ACREAGE DEDICATION PLAT**

All Distances must be from the outer boundaries of the section

|   |   |                                 |                                       |                                  |
|---|---|---------------------------------|---------------------------------------|----------------------------------|
| Operator<br><b>SDX RESOURCES, INC.</b>  |   | Lease<br><b>ARCO STATE 26-2</b> |                                       | Well No.<br><b>2</b>             |
| Unit Letter<br><b>E</b>   | Section<br><b>26</b>                              | Township<br><b>17 SOUTH</b>     | Range<br><b>28 EAST</b>               | County<br><b>EDDY COUNTY, NM</b> |
| Actual Footage Location of Well:<br><b>2264</b> feet from the <b>NORTH</b> line and <b>330</b> feet from the <b>WEST</b> line |   |                                 |                                       |                                  |
| Ground level Elev.<br><b>3608.</b>  | Producing Formation<br><b>Grayburg-San Andres</b> | Pool<br><b>Artesia-O-GR-SA</b>  | Dedicated Acreage:<br><b>40</b> Acres |                                  |

1. Outline the acreage dedicated to the subject well by colored pencil or hatchure marks on the plat below.

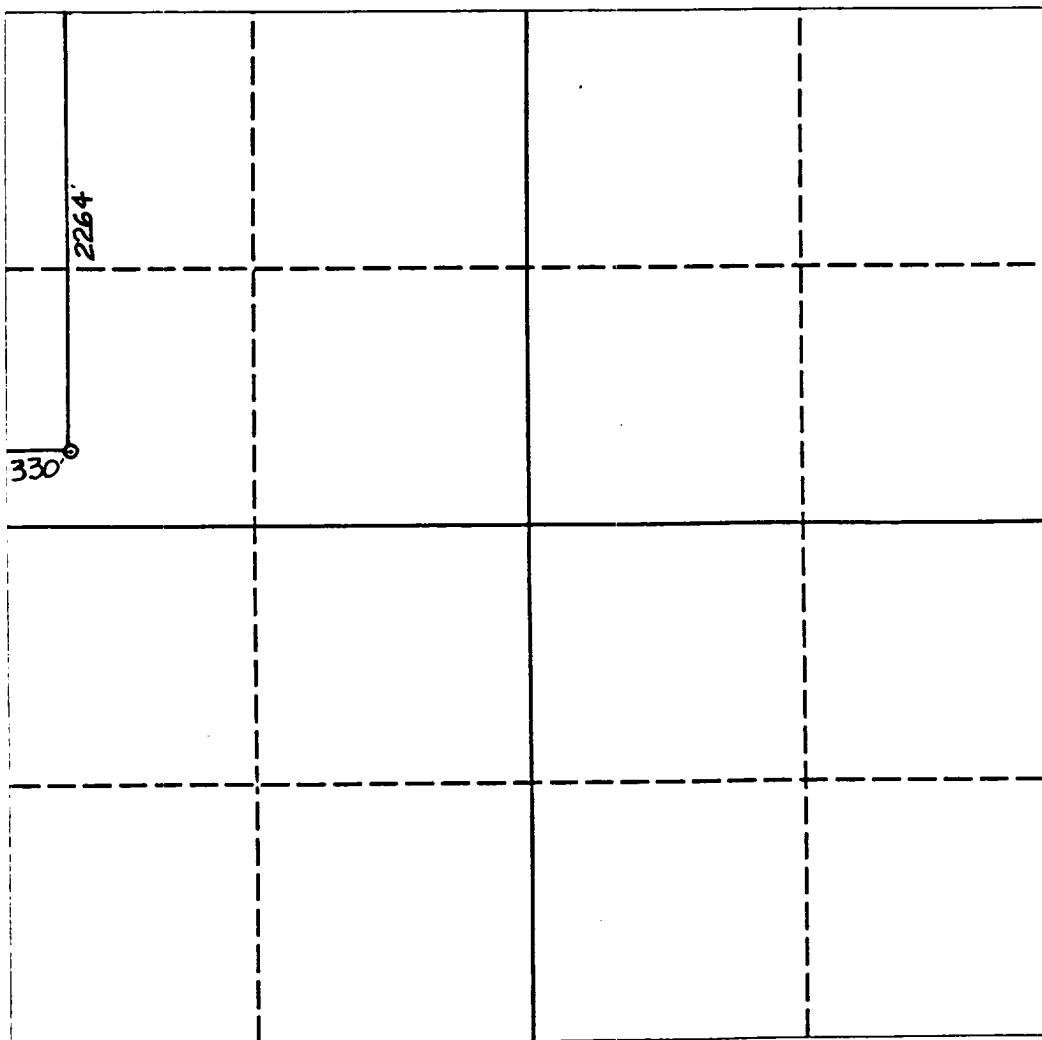
2. If more than one lease is dedicated to the well, outline each and identify the ownership thereof (both as to working interest and royalty).

3. If more than one lease of different ownership is dedicated to the well, have the interest of all owners been consolidated by communitization, unitization, force-pooling, etc.?

☐ Yes ☐ No If answer is "yes" type of consolidation \_\_\_\_\_

If answer is "no" list the owners and tract descriptions which have actually been consolidated. (Use reverse side of this form if necessary.) \_\_\_\_\_

No allowable will be assigned to the well until all interests have been consolidated (by communitization, unitization, forced-pooling, or otherwise) or until a non-standard unit, eliminating such interest, has been approved by the Division.



**OPERATOR CERTIFICATION**

I hereby certify that the information contained herein is true and complete to the best of my knowledge and belief.

Signature

Printed Name

**Chuck Morgan**

Position

**Engineer**

Company

**SDX Resources, Inc.**

Date

**August 2, 1993**

**SURVEYOR CERTIFICATION**

I hereby certify that the well location shown on this plat was plotted from field notes of actual surveys made by me or under my supervision, and that the same is true and correct to the best of my knowledge and belief.

Date Surveyed

**JULY 20 1993**

Signature & Seal of  
Professional Surveyor

**REGISTERED PROFESSIONAL ENGINEER**  
**5412**  
**NEW MEXICO**  
**PE&PS NO. 5412**

0 330 660 990 1320 1650 1980 2310 2640 2000 1500 1000 500 0

