

**NM OIL CO. COMMISSION**  
**ARTESIA, NM 88210**  
**UNITED STATES**  
**DEPARTMENT OF THE INTERIOR**  
**BUREAU OF LAND MANAGEMENT**

CONTACT RECEIVING  
OFFICE FOR REVIEW  
OF COPIES ACQUIRED  
(Other instructions on  
reverse side)

30-015-27968  
BLM Roswell District  
Modified Form No.  
NMO-3160-2  
c/sf

**APPLICATION FOR PERMIT TO DRILL, DEEPEN, OR PLUG BACK**

1a. TYPE OF WORK

DRILL ☒

DEEPEN ☐

PLUG BACK ☐

b. TYPE OF WELL

OIL WELL ☒

GAS WELL ☐

OTHER ☐

SINGLE ZONE ☒

MULTIPLE ZONE ☐

2. NAME OF OPERATOR

Siete Oil and Gas Corporation

3a. Area Code & Phone No.  
(505)622-2202

3. ADDRESS OF OPERATOR

P.O. Box 2523, Roswell, NM 88202-2523

4. LOCATION OF WELL (Report location clearly and in accordance with any State requirements.)\*  
At surface 1980' FNL & 1980' FWL, SE 1/4 NW 1/4, Unit Letter F

At proposed prod. zone same

14. DISTANCE IN MILES AND DIRECTION FROM NEAREST TOWN OR POST OFFICE\*

6 miles SE of Malaga, NM

15. DISTANCE FROM PROPOSED\*

LOCATION TO NEAREST  
PROPERTY OR LEASE LINE, FT.  
(Also to nearest drlg. unit line, if any)

n/a

16. NO. OF ACRES IN LEASE

320

17. NO. OF ACRES ASSIGNED  
TO THIS WELL

40

18. DISTANCE FROM PROPOSED LOCATION\*

TO NEAREST WELL, DRILLING, COMPLETED,  
OR APPLIED FOR, ON THIS LEASE, FT.

n/a

19. PROPOSED DEPTH

6500'

20. ROTARY OR CABLE TOOLS

Rotary

21. ELEVATIONS (Show whether DF, RT, GR, etc.)

2927' GR

**Garibad Controlled Water Basin**

22. APPROX. DATE WORK WILL START\*

May 10, 1994

**PROPOSED CASING AND CEMENTING PROGRAM**

HOLE SIZE	CASING SIZE	WEIGHT/FOOT	GRADE	THREAD TYPE	SETTING DEPTH	QUANTITY OF CEMENT
17 1/2"	13 3/8"	48#	J-55	8rd	600'	600 sxs circ
12 1/4"	8 5/8"	24# & 32#	J-55	8rd	2600'	1000 sxs circ
7 7/8"	5 1/2"	17# & 15.5#	J-55	8rd	6500'	1000 sxs - SEE SKIP

Selectively perforate and treat pay zones.

Attachments:

Survey plat (C-102)  
Supplemental Drilling Data  
Surface Use Plan

**Approval Subject to  
General Requirements and  
Special Stipulations  
Attached**

Part ID-1  
5-27-94  
New Loc & API

IN ABOVE SPACE DESCRIBE PROPOSED PROGRAM: If proposal is to deepen or plug back, give data on present productive zone and proposed new productive zone. If proposal is to drill or deepen directionally, give pertinent data on subsurface locations and measured and true vertical depths. Give blowout preventer program, if any.

SIGNED Cathy Batley Seely TITLE

Reg. Spec.

DATE 4/14/94

(This space for Federal or State office use)

PERMIT NO.

APPROVAL DATE

APPROVED BY

Scott Powers

AREA MANAGER

DATE

MAY 16 1994

CONDITIONS OF APPROVAL, IF ANY:

APPROVAL OF THIS APPLICATION DOES NOT WARRANT  
OR CERTIFY THAT THE APPLICANT HOLDS LEGAL OR  
EQUITABLE TITLE TO THOSE RIGHTS IN THE SUBJECT  
LEASE WHICH WOULD ENTITLE THE APPLICANT TO  
CONDUCT OPERATIONS THEREON. A crime for any person knowingly and willfully  
\*See Instructions On Reverse Side

Submit to Appropriate  
District Office  
State Lease - 4 copies  
Fee Lease - 3 copies

State of New Mexico  
Energy, Minerals and Natural Resources Department

Form C-102  
Revised 1-1-89

OIL CONSERVATION DIVISION

P.O. Box 2088  
Santa Fe, New Mexico 87504-2088

DISTRICT I  
P.O. Box 1980, Hobbs, NM 88240

DISTRICT II  
P.O. Drawer DD, Artesia, NM 88210

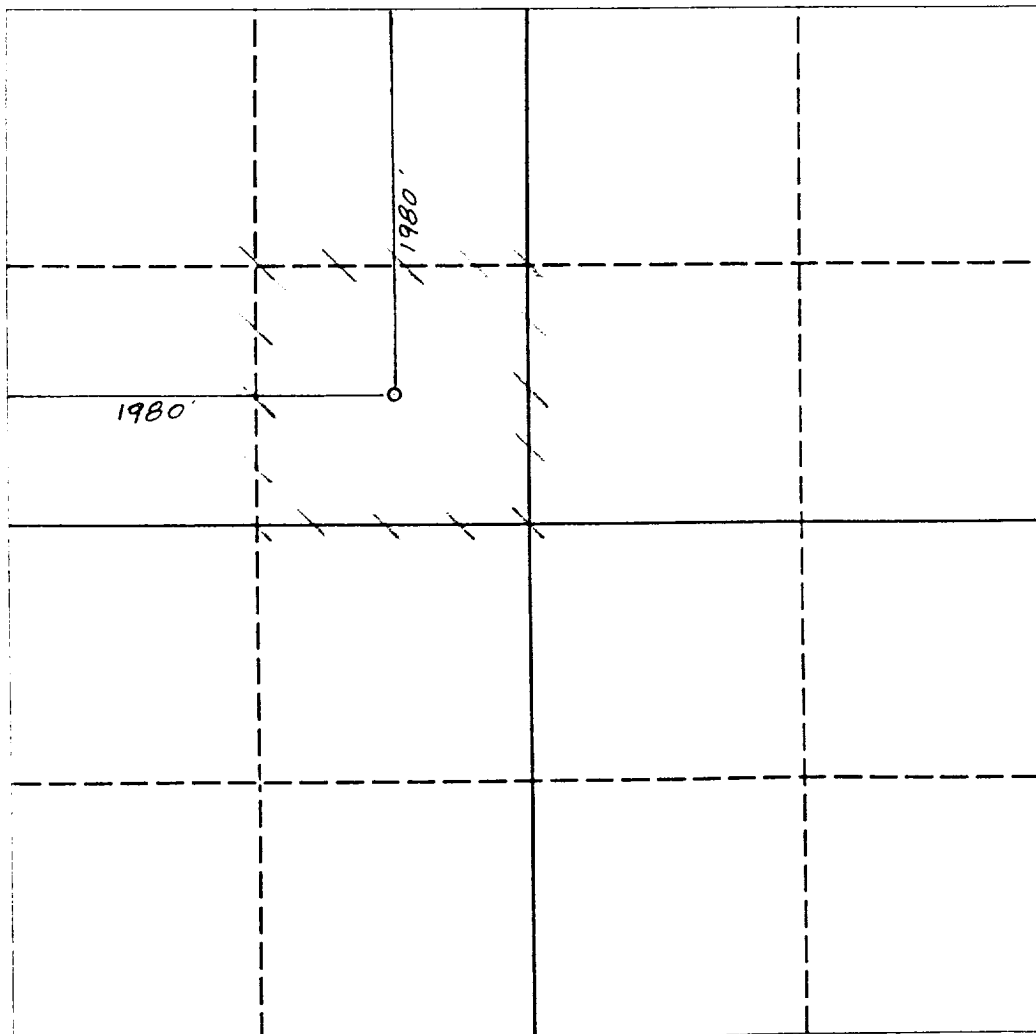
DISTRICT III  
1000 Rio Brazos Rd., Aztec, NM 87410

WELL LOCATION AND ACREAGE DEDICATION PLAT

All Distances must be from the outer boundaries of the section

Operator <b>SIETE OIL &amp; GAS CORPORATION</b>			Lease <b>PHILLIPS FEDERAL</b>		Well No. <b>1</b>
Unit Letter <b>F</b>	Section <b>1</b>	Township <b>25 SOUTH</b>	Range <b>28 EAST</b>	County <b>EDDY COUNTY, NM</b>	
Actual Footage Location of Well: 1980 feet from the <b>NORTH</b> line and 1980 feet from the <b>WEST</b> line					
Ground level Elev. <b>2927.</b>	Producing Formation <b>Delaware</b>		Pool <b>Wildcat Undesignated</b>	Dedicated Acreage <b>40</b> Acres	

1. Outline the acreage dedicated to the subject well by colored pencil or hachure marks on the plat below.
2. If more than one lease is dedicated to the well, outline each and identify the ownership thereof (both as to working interest and royalty).
3. If more than one lease of different ownership is dedicated to the well, have the interest of all owners been consolidated by communitization, unitization, force-pooling, etc?  
☐ Yes ☐ No If answer is "yes" type of consolidation \_\_\_\_\_  
If answer is "no" list the owners and tract descriptions which have actually been consolidated. (Use reverse side of this form if necessary).  
No allowable will be assigned to the well until all interests have been consolidated (by communitization, unitization, forced-pooling, or otherwise) or until a non-standard unit, eliminating such interest, has been approved by the Division.



OPERATOR CERTIFICATION

I hereby certify that the information contained herein is true and complete to the best of my knowledge and belief.

Signature

**Harold D. Justice**

Printed Name

**Exec. Vice President**

Position

**Siete Oil & Gas Corp.**

Company

**April 14, 1994**

Date

SURVEYOR CERTIFICATION

I hereby certify that the well location shown on this plat was plotted from field notes of actual surveys made by me or under my supervision, and that the same is true and correct to the best of my knowledge and belief.

Date Surveyed

**MARCH 22, 1994**

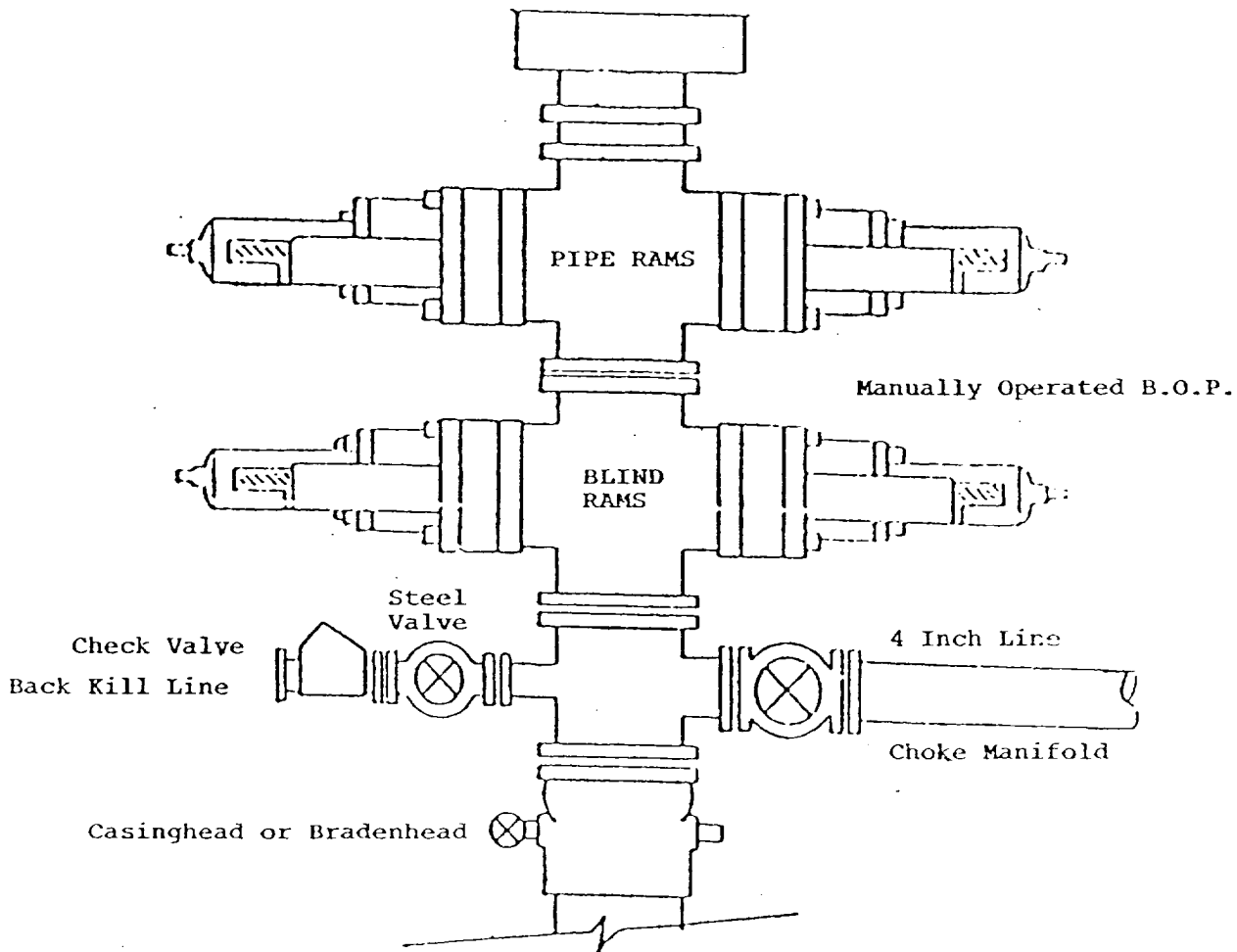
Signature & Seal of  
Professional Surveyor

**5412**  
REGISTERED PROFESSIONAL ENGINEER  
NM PE&PS NO. 5412

0 330 660 990 1320 1650 1980 2310 2640 2000 1500 1000 500 0

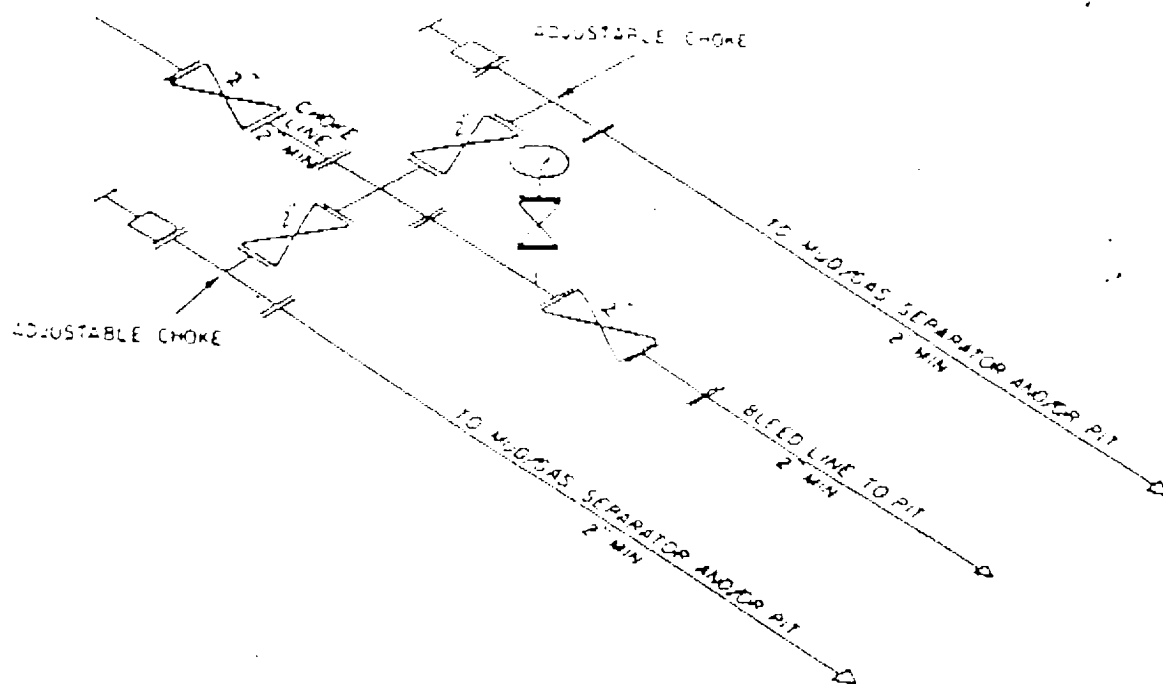
BOP DIAGRAM

RATED 3000#

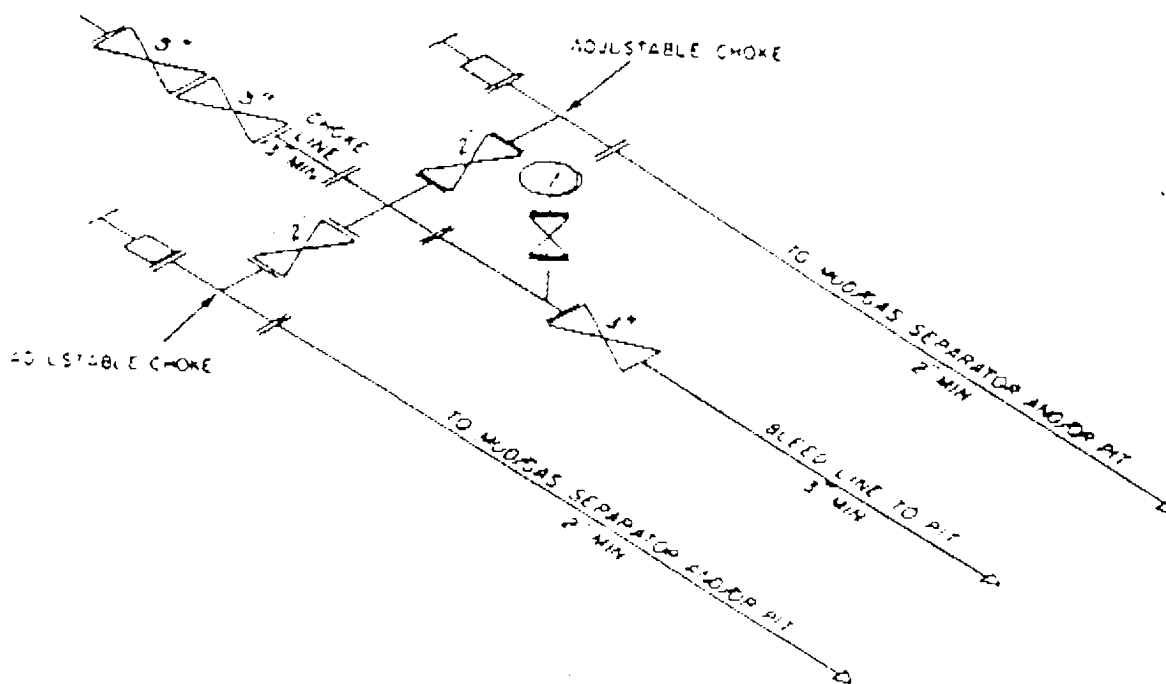


1. Diagram of Choke Manifold  
Equipment

Illustration 2, Page 1



2M CHOKE MANIFOLD EQUIPMENT — CONFIGURATION MAY VARY



3M CHOKE MANIFOLD EQUIPMENT — CONFIGURATION MAY VARY