

NM OIL CON. COMMISSION
DRAWER DD UNITED STATES
ARTESIA AREA 88210 OF THE INTERIOR
BUREAU OF LAND MANAGEMENT

CONTACT RECEIVING
OFFICE NUMBER
OF COPIES REQUIRED
(Other instructions on
reverse side)

30-015-27988
BLM Roswell District
Modified Form No.
NM060-3160-2

APPLICATION FOR PERMIT TO DRILL, DEEPEN, OR PLUG BACK

1a. TYPE OF WORK

DRILL ☒

DEEPEN ☐

PLUG BACK ☐

b. TYPE OF WELL

OIL
WELL ☒

GAS
WELL ☐

OTHER

SINGLE
ZONE ☐

MULTIPLE
ZONE ☐

2. NAME OF OPERATOR

Marbob Energy Corporation ✓

3a. Area Code
505-748-3303

3. ADDRESS OF OPERATOR

P. O. Drawer 217, Artesia, NM 88210

4. LOCATION OF WELL (Report location clearly and in accordance with any State requirements.)

At surface

1345' FEL 1345' FSL, Unit J
At proposed prod. zone

same

14. DISTANCE IN MILES AND DIRECTION FROM NEAREST TOWN OR POST OFFICE*

East of Artesia on Hwy 82 approximately 21.9 miles

10. DISTANCE FROM PROPOSED*

LOCATION TO NEAREST
PROPERTY OR LEASE LINE, FT.
(Also to nearest drlg. unit line, if any)

1345'

16. NO. OF ACRES IN LEASE

5129.44

18. DISTANCE FROM PROPOSED LOCATION*

TO NEAREST WELL, DRILLING, COMPLETED,
OR APPLIED FOR, ON THIS LEASE, FT.

898'

19. PROPOSED DEPTH

4800'

17. NO. OF ACRES ASSIGNED
TO THIS WELL

40

20. ROTARY OR CABLE TOOLS

rotary

21. ELEVATIONS (Show whether DF, RT, GR, etc.)

3629' GR

22. APPROX. DATE WORK WILL START*

June 1, 1994

23.

PROPOSED CASING AND CEMENTING PROGRAM

HOLE SIZE	CASING SIZE	WEIGHT/FOOT	GRADE	THREAD TYPE	SETTING DEPTH	QUANTITY OF CEMENT
12 1/4"	8 5/8"	24#	J-55	LTC	350'	300 SX
7 7/8"	5 1/2"	17#	J-55	LTC	4800'	1100 SX

Pay zone will be selectively perforated and stimulated as
needed for optimum production:

Attached are: 1. Location & Acreage Dedication Plat
2. Supplemental Drilling Data
3. Surface Use Plan

Approval Subject to
General Regulations and
Special Regulations
Applicable

IN ABOVE SPACE DESCRIBE PROPOSED PROGRAM: If proposal is to deepen or plug back, give data on present productive zone and proposed new productive zone. If proposal is to drill or deepen directionally, give pertinent data on subsurface locations and measured and true vertical depths. Give blowout preventer program, if any.

24. SIGNED Thonda Nelson TITLE Production Clerk DATE 4/29/94

(This space for Federal or State office use)

PERMIT NO.

APPROVAL DATE

APPROVED BY

Scott Powers

TITLE

(for) AREA MANAGER

DATE

5-31-94

CONDITIONS OF APPROVAL, IF ANY:

APPROVAL OF THIS APPLICATION DOES NOT WARRANT
OR CERTIFY THAT THE APPLICANT HOLDS LEGAL OR
QUITABLE TITLE TO THOSE RIGHTS IN THE SUBJECT
SE WHICH WOULD ENTITLE THE APPLICANT TO

See Instructions On Reverse Side

It is a crime for any person knowingly and willfully to make to any department or agency of the

DISTRICT I
P.O. Box 1980, Hobbs, NM 88240

State of New Mexico

Energy, Minerals and Natural Resources Department

Form C-102
Revised February 10, 1994
Instruction on back
Submit to Appropriate District Office
State Lease - 4 Copies
Fee Lease - 3 Copies

DISTRICT II
P.O. Drawer DD, Artesia, NM 88210

DISTRICT III
1000 Rio Brazos Rd., Aztec, NM 87410

OIL CONSERVATION DIVISION

P.O. Box 2088
Santa Fe, New Mexico 87504-2088

☐ AMENDED REPORT

WELL LOCATION AND ACREAGE DEDICATION PLAT

API Number 30-015-27988	Pool Code 28509	Pool Name Grbg Jackson SR Q Grbg SA
Property Code 6497	Property Name BURCH KEELY UNIT	Well Number 227
OGRID No. 014049	Operator Name MARBOB ENERGY CORP.	Elevation 3629'

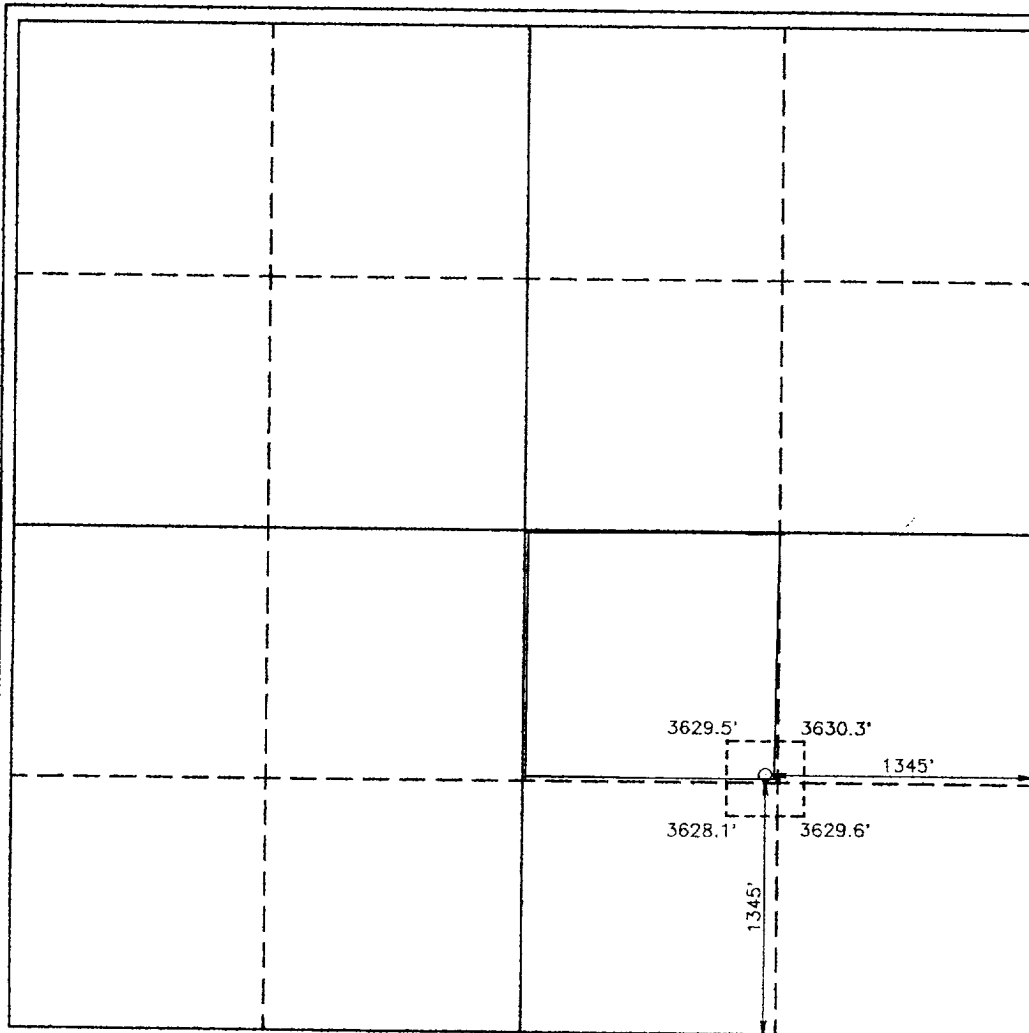
Surface Location

UL or lot No. J	Section 13	Township 17S	Range 29E	Lot Idn	Feet from the 1345	North/South line SOUTH	Feet from the 1345	East/West line EAST	County EDDY
--------------------	---------------	-----------------	--------------	---------	-----------------------	---------------------------	-----------------------	------------------------	----------------

¹¹ Bottom Hole Location If Different From Surface

UL or lot No.	Section	Township	Range	Lot Idn	Feet from the	North/South line	Feet from the	East/West line	County
Dedicated Acres		Joint or Infill	Consolidation Code	Order No.					

NO ALLOWABLE WILL BE ASSIGNED TO THIS COMPLETION UNTIL ALL INTERESTS HAVE BEEN CONSOLIDATED
OR A NON-STANDARD UNIT HAS BEEN APPROVED BY THE DIVISION



OPERATOR CERTIFICATION	
I hereby certify the the information contained herein is true and complete to the best of my knowledge and belief.	
Signature	
Rhonda Nelson	
Printed Name	
Production Clerk	
Title	
04/29/94	
Date	
SURVEYOR CERTIFICATION	
I hereby certify that the well location shown on this plat was plotted from field notes of actual surveys made by me or under my supervision, and that the same is true and correct to the best of my belief.	
APRIL 22, 1994	
Date Surveyed	
Signature & Seal of Professional Surveyor	
W.O. Num. 94-11-0750	
Certificate No.	JOHN W. WEST, 676
	RONALD L. JOHNSON, 3239
	GARY L. JONES, 7977

DRILLING PROGRAM
PAGE 2

No other formations are expected to give up oil, gas, or fresh water in measurable quantities. The surface fresh water sands will be protected by setting 8 5/8 casing at 350' and circulating cement back to surface. Any shallower zones above TD which contain commercial quantities of oil and/or gas will have cement circulated across them by inserting a float shoe joint into the 5 1/2" production casing which will be run at TD.

4. Casing Program:

<u>Hole Size</u>	<u>Interval</u>	<u>OD csg</u>	<u>Weight, Grade, Jt. Cond. Type</u>			
12 1/4"	0 - 350"	8 5/8"	24#	J-55	LTC NEW	R-3
7 7/8"	0 - TD	5 1/2"	17#	J-55	LTC NEW	R-3

Cement Program:

8 5/8" Surface Casing: Cemented to surface with 300sx of Class C w/2% cc.

5 1/2" Production Casing: Cemented with 1100sx Class C. Will attempt to circulate to surface.

5. Minimum Specifications for Pressure Control:

The blowout preventer equipment (BOP) shown in Exhibit #1 will consist of a double ram-type (3000 psi wp) preventer. This unit will be hydraulically operated and the ram-type preventer will be equipped with blind rams on top and 4-1/2" drill pipe rams on bottom. This BOP will be nipped up on the 8 5/8" surface csg and used continuously until TD is reached. All BOP's and accessory equipment will be tested to 1000 psi before drilling out of surface casing.

Pipe rams will be operationally checked each 24 hour period. Blind rams will be operationally checked on each trip out of the hole. These checks will be noted on the daily tour sheets. A 2" kill line and a 3" choke line will be included in the drilling spool located below the ram-type BOP. Other accessories to the BOP equipment will include a kelly cock and floor safety valve (inside BOP) and choke lines and choke manifold with 3000 psi WP rating.