

District I
PO Box 1980, Hobbs, NM 88241-1980
District II
811 S. First Street, Artesia, NM 88210
District III
1000 Rio Brazos Rd, Aztec, NM 87410
District IV
2040 South Pacheco, Santa Fe, NM 87505

State of New Mexico
Energy, Minerals & Natural Resources Department
OIL CONSERVATION DIVISION
2040 South Pacheco
Santa Fe, NM 87504-2088

Form C-101
Revised February 10, 1994
Instructions On Back
Submit to Appropriate District Office
State Lease - 6 Copies
Fee Lease - 5 Copies

AMENDED REPORT

APPLICATION FOR PERMIT TO DRILL, RE-ENTER, DEEPEN, PLUGBACK, OR ADD A ZONE

1 Operator Name and Address Strata Production Company P. O. Box 1030 Roswell, New Mexico 88202-1030		2 OGRID Number 021712
3 API Number 30-015-		
4 Property Code 010735	5 Property Name Nash Unit	6 Well No. #16

7 Surface Location

UL or Lot No.	Section	Township	Range	Lot Idn	Feet from the	North/South Line	Feet from the	East/West Line	County
P	12	23S	29E		330	South	990	East	Eddy

8 Proposed Bottom Hole Location If Different From Surface

UL or Lot No.	Section	Township	Range	Lot Idn	Feet from the	North/South Line	Feet from the	East/West Line	County

9 Proposed Pool 1
Brushy Canyon

10 Proposed Pool 2

11 Work Type Code N	12 Well Type Code O	13 Cable/Rotary R	14 Lease Type Code S	15 Ground Level Elevation 2998'
16 Multiple N	17 Proposed Depth 7300'	18 Formation Delaware	19 Contractor Lakota Drilling Co.	20 Spud Date September 1, 1997

21 Proposed Casing and Cement Program

Hole Size	Casing Size	Casing weight/foot	Setting Depth	Sacks of Cement	Estimated TOC
17 1/2"	13 3/8"	48#	300'	425	Surface
11"	8 5/8"	32#	3000'	950	Surface
7 7/8"	5 1/2"	17#	7300'	1130	2700'

R-III-P

22. Describe the proposed program. If this application is to DEEPEN or PLUG BACK give the data on the present productive zone and proposed new productive zone. Describe the blowout prevention program, if any. Use additional sheets if necessary.

Strata Production Company proposes to drill to a depth sufficient to test the Delaware formation. If productive, 5 1/2" casing will be set. If non-productive, the well will be plugged and abandoned in a manner consistent with State of New Mexico Regulations. Specific programs are outlined as follows:

**Form C-102 Well Location and Acreage Dedication Plat
Exhibit "A" Equipment Description**

The Application for Permit to Drill for the proposed location was originally filed May 6, 1993 and approved June 21, 1994.

23 I hereby certify that the information given above is true and complete to the best of my knowledge and belief.		OIL CONSERVATION DIVISION	
Signature: <i>Carol J. Garcia</i>		Approved By:	
Printed name: Carol J. Garcia		Title:	
Title: Production Records Manager		Approval Date:	Expiration Date:
Date: 7/11/97	Phone: 505-622-1127	Conditions of Approval: Attached	

Submit to Appropriate
District Office
State Lease - 4 copies
Fee Lease - 3 copies

State of New Mexico
Bureau of Geology, Minerals and Natural Resources Department

Form C-102
Revised 1-1-89

OIL CONSERVATION DIVISION

P.O. Box 2088
Santa Fe, New Mexico 87504-2088

DISTRICT I
P.O. Box 1980, Hobbs, NM 88240

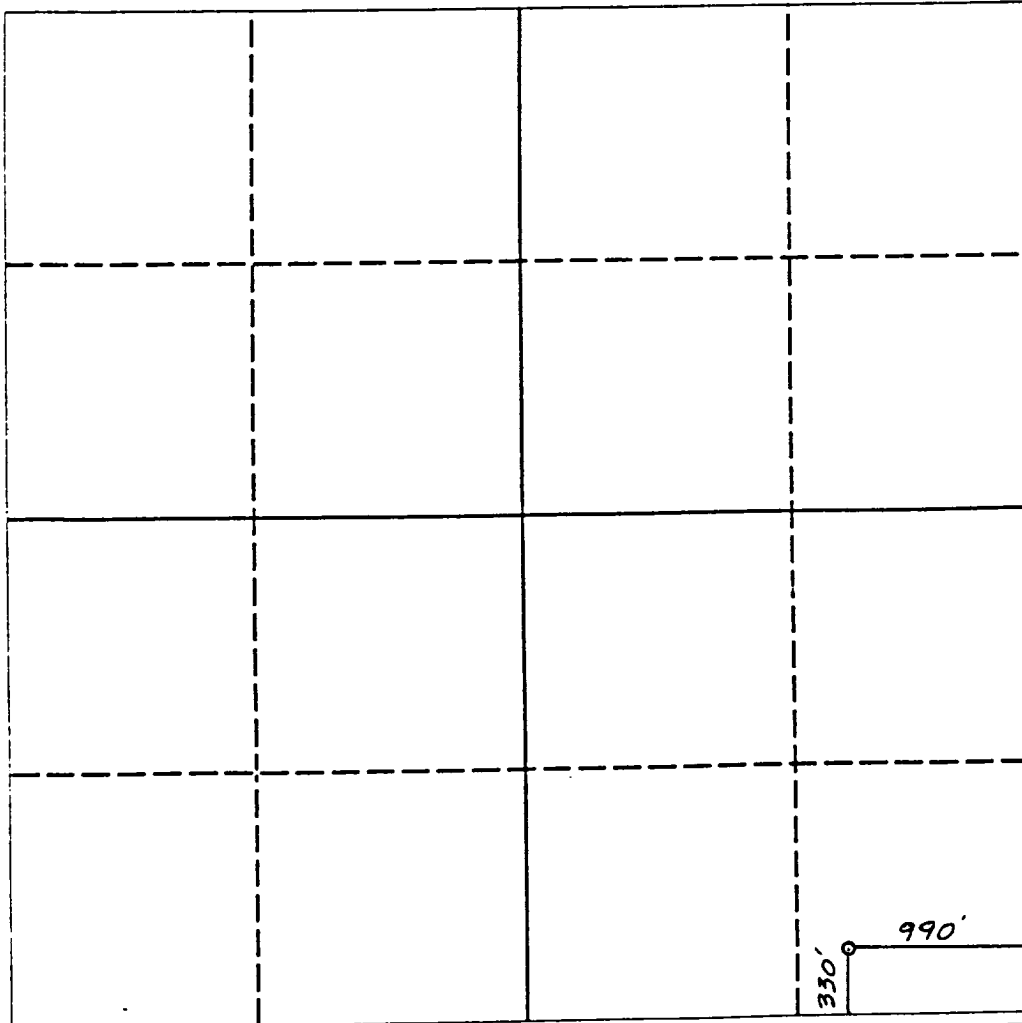
DISTRICT II
P.O. Drawer DD, Artesia, NM 88210

DISTRICT III
1000 Rio Brazos Rd., Aztec, NM 87410

WELL LOCATION AND ACREAGE DEDICATION PLAT
All Distances must be from the outer boundaries of the section

Operator STRATA PRODUCTION			Lease NASH UNIT		Well No. 16
Unit Letter P	Section 12	Township 23 SOUTH	Range 29 EAST	County EDDY COUNTY, NM	
Actual Footage Location of Well: 990 feet from the EAST line and 330 feet from the SOUTH line					
Ground level Elev. 2998.	Producing Formation DELAWARE		Pool NASH DRAW	Dedicated Acreage: 40.00 Acres	

1. Outline the acreage dedicated to the subject well by colored pencil or hachure marks on the plat below.
2. If more than one lease is dedicated to the well, outline each and identify the ownership thereof (both as to working interest and royalty).
3. If more than one lease of different ownership is dedicated to the well, have the interest of all owners been consolidated by communitization, unitization, force-pooling, etc.?
☐ Yes ☐ No If answer is "yes" type of consolidation _____
If answer is "no" list the owners and tract descriptions which have actually been consolidated. (Use reverse side of this form if necessary.) _____
No allowable will be assigned to the well until all interests have been consolidated (by communitization, unitization, forced-pooling, or otherwise) or until a non-standard unit, eliminating such interest, has been approved by the Division.



OPERATOR CERTIFICATION

I hereby certify that the information contained herein is true and complete to the best of my knowledge and belief.

Signature

Printed Name

Carol J. Garcia

Position

Production Supervisor

Company

Strata Production Company

Date

July 11, 1997

SURVEYOR CERTIFICATION

I hereby certify that the well location shown on this plat was plotted from field notes of actual surveys made by me or under my supervision, and that the same is true and correct to the best of my knowledge and belief.

Date Surveyed

OCTOBER 1, 1992

Signature **ASKEE D D Y**
Professional Surveyor

Certificate No. **12**

NM REGS NO

0 330 660 990 1320 1650 1980 2310 2640 2000 1500 1000 500 0

EXHIBIT "A"

EQUIPMENT DESCRIPTION

All equipment should be at least 3,000 psi WP or higher unless otherwise specified.

1. Bell nipple
2. Hydril bag type preventer
3. Ram type pressure operated blowout preventer with blind rams.
4. Flanged spool with one 3" and one 2" (minimum) outlet.
5. 2" (minimum) flanged plug or gate valve.
6. 2"x 2"x 2" (minimum) flanged.
7. 3" gate valve.
8. Ram type pressure operated blowout preventer with pipe rams.
9. Flanged type casing head with one side outlet.
10. 2" threaded (or flanged) plug or gate valve. Flanged on 5000# WP, threaded on 3000# WP or less.
11. 3" flanged spacer spool.
12. 3"x 2"x 2"x 2" flanged cross.
13. 2" flanged plug or gate valve.
14. 2" flanged adjustable choke.
15. 2" threaded flange.
16. 2" XXH nipple.
17. 2" forged steel 90° Ell.
18. Cameron (or equal) threaded pressure gauge.
19. Threaded flange.
20. 2" flanged tee.
21. 2" flanged plug or gate valve.
22. 2 1/2" pipe, 300' to pit, anchored.
23. 2 1/2" SE valve.
24. 2 1/2" line to steel pit or separator.

NOTES:

- 1). Items 3, 4 and 8 may be replaced with double ram type preventer with side outlets between the rams.
- 2). The two valves next to the stack on the fill and kill line to be closed unless drill string is being pulled.
- 3). Kill line is for emergency use only. This connection shall not be used for filling.
- 4). Replacement pipe rams and blind rams shall be on location at all times.
- 5). Only type U, LSW and QRC ram type preventers with secondary seals are acceptable for 5000 psi WP and higher BOP stacks.
- 6). Type E ram-type BOP's with factory modified side outlets may be used on 3000 psi or lower WP BOP stacks.

