

APPLICATION FOR PERMIT TO DRILL OR DEEPEN

1a. TYPE OF WORK

DRILL ☒

DEEPEN ☐

b. TYPE OF WELL

OIL WELL ☒

GAS WELL ☐

OTHER

SINGLE ZONE ☐

MULTIPLE ZONE ☐

2. NAME OF OPERATOR

BASS ENTERPRISES PRODUCTION COMPANY ✓

3. ADDRESS AND TELEPHONE NO.

P.O. BOX 2760, MIDLAND, TEXAS 79702-2760 (915) 683

4. LOCATION OF WELL (Report location clearly and in accordance with any State requirements.)

At surface

1650' FWL & 990' FSL, SECTION 12, T22S - R30E

At proposed prod. zone

14. DISTANCE IN MILES AND DIRECTION FROM NEAREST TOWN OR POST OFFICE*

23 MILES EAST OF CARLSBAD, NEW MEXICO

15. DISTANCE FROM PROPOSED*

LOCATION TO NEAREST PROPERTY OR LEASE LINE, FT. (Also to nearest drig. unit line, if any)

330

16. NO. OF ACRES IN LEASE

320

17. NO. OF ACRES ASSIGNED TO THIS WELL

40

18. DISTANCE FROM PROPOSED LOCATION* TO NEAREST WELL, DRILLING, COMPLETED, OR APPLIED FOR, ON THIS LEASE, FT.

1320

19. PROPOSED DEPTH

7750'

20. ROTARY OR CABLE TOOLS

ROTARY

21. ELEVATIONS (Show whether DF, RT, GR, etc.)

3327' GR

22. APPROX. DATE WORK WILL START*

UPON APPROVAL

23.

PROPOSED CASING AND CEMENTING PROGRAM

SIZE OF HOLE	GRADE, SIZE OF CASING	WEIGHT PER FOOT	SETTING DEPTH	QUANTITY OF CEMENT
*17-1/2"	13-3/8" WC-40	48#/FT	600'	505 SX CIRC TO SURFACE
**12-1/4"	8-5/8" WC-50	32#/FT	3650'	1525 SX CIRC TO SURFACE
***7-7/8"	5-1/2" K-55	15.50/FT	7750'	660 SX TIE BACK INTO INT CSG (3350')

* SURFACE CASING TO BE SET @ +/-50' ABOVE THE SALTS IN THE RUSTLER ANHYDRITE.

** INTERMEDIATE CASING TO BE SET IN THE TOP OF THE LAMAR LIME.

*** DV TOOL TO BE SET @ 6000', CEMENT TO TIE BACK TO 3350'.

DRILLING PROCEDURE, BOPE DIAGRAM, ANTICIPATED TOPS AND SURFACE USE PLANS ATTACHED.

NOTE: THIS LOCATION IS WITHIN THE STATE OF NEW MEXICO R-111-P AND THE SECRETARIAL POTASH AREA.

CERTIFIED # P 158 944 994

IN ABOVE SPACE DESCRIBE PROPOSED PROGRAM: If proposal is to deepen, give data on present productive zone and proposed new productive zone. If proposal is to drill or deepen directionally, give pertinent data on subsurface locations and measured and true vertical depths. Give blowout preventer program, if any.

24.

SIGNED

[Signature]

TITLE

DIVISION DRILLING SUPT.

DATE

6.20.94

(This space for Federal or State office use)

PERMIT NO.

APPROVAL DATE

Application approval does not warrant or certify that the applicant holds legal or equitable title to those rights in the subject lease which would entitle the applicant to conduct operations thereon. CONDITIONS OF APPROVAL, IF ANY:

APPROVAL SUBJECT TO GENERAL REQUIREMENTS AND SPECIAL STIPULATIONS ATTACHED

APPROVED BY

/s/ Michael R. Ford

TITLE

Acting State Director

DATE

8-22-94

*See Instructions On Reverse Side

DISTRICT II
P.O. Drawer DD, Artesia, NM 88210

DISTRICT III
1000 Rio Brazos Rd., Aztec, NM 87410

OIL CONSERVATION DIVISION

P.O. Box 2088
Santa Fe, New Mexico 87504-2088

☐ AMENDED REPORT

WELL LOCATION AND ACREAGE DEDICATION PLAT

API Number 30-015-28081	Pool Code 8435	Pool Name CABIN LAKE (DELAWARE)
Property Code	Property Name JAMES RANCH UNIT	Well Number 72
OGRID No. 001801	Operator Name BASS ENTERPRISES PRODUCTION Co.	Elevation 3327'

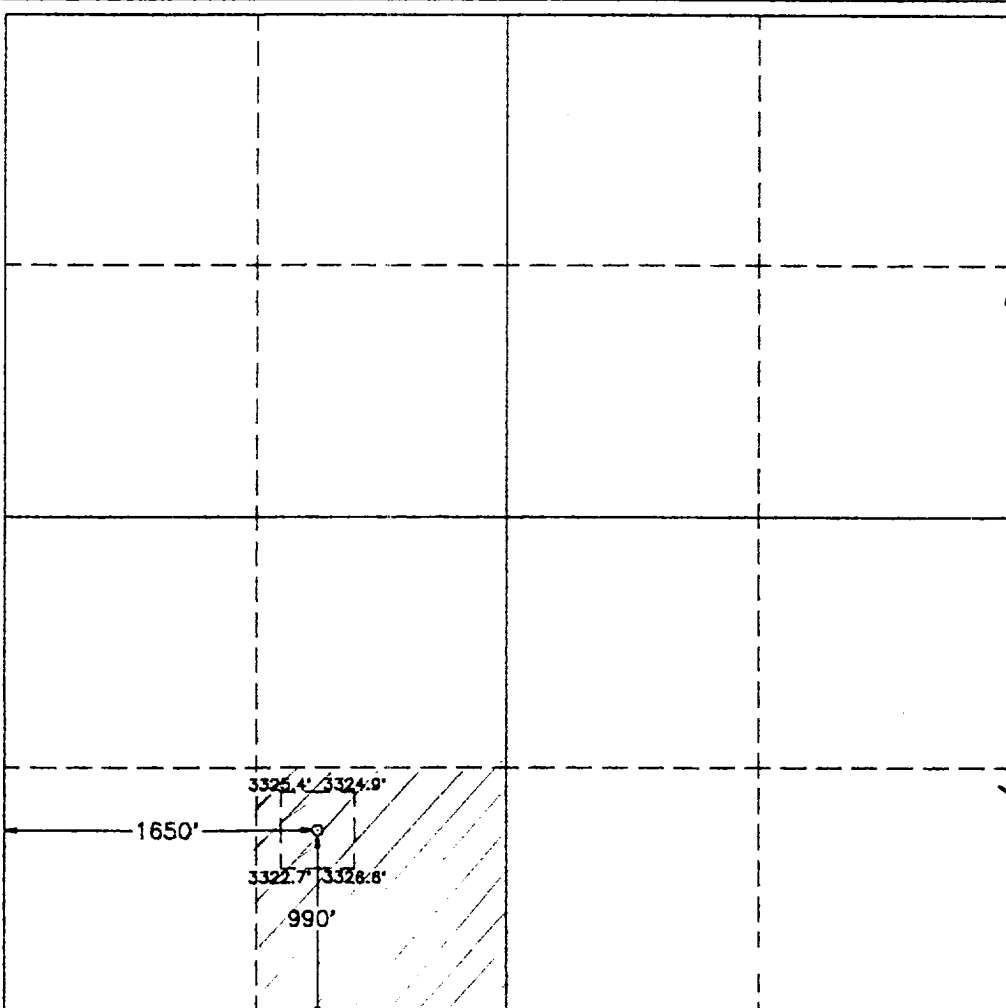
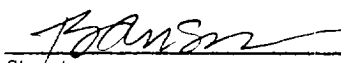
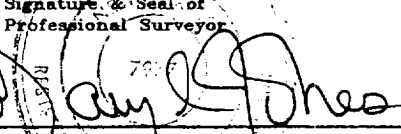
Surface Location

UL or lot No.	Section	Township	Range	Lot Idn	Feet from the	North/South line	Feet from the	East/West line	County
N	12	22 S	30 E		990	SOUTH	1650	WEST	EDDY

Bottom Hole Location If Different From Surface

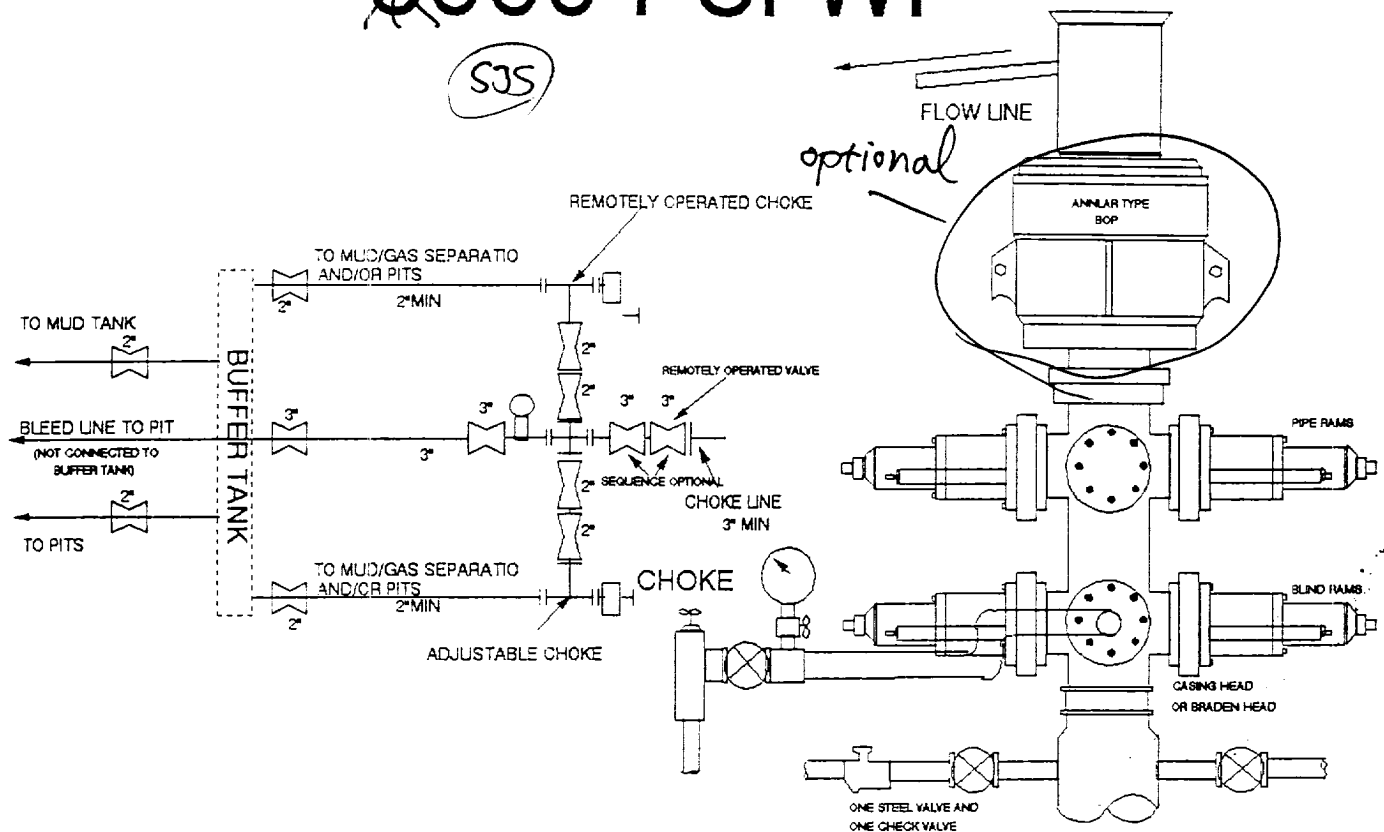
UL or lot No.	Section	Township	Range	Lot Idn	Feet from the	North/South line	Feet from the	East/West line	County
Dedicated Acres	Joint or Infill	Consolidation Code	Order No.						
40	N	U							

NO ALLOWABLE WILL BE ASSIGNED TO THIS COMPLETION UNTIL ALL INTERESTS HAVE BEEN CONSOLIDATED
OR A NON-STANDARD UNIT HAS BEEN APPROVED BY THE DIVISION

	OPERATOR CERTIFICATION I hereby certify the information contained herein is true and complete to the best of my knowledge and belief.  Signature <u>WILLIAM R. DANNELS</u> Printed Name <u>DIVISION DRILLING SUPT.</u> Title <u>6.20.94</u> Date
	SURVEYOR CERTIFICATION I hereby certify that the well location shown on this plat was plotted from field notes of actual surveys made by me or under my supervision, and that the same is true and correct to the best of my belief. <u>JUNE 7, 1994</u> Date Surveyed  Signature & Seal of Professional Surveyor <u>WFO. Num. 94-11-0982</u> Certificate No. <u>JOHN W. WEST, 676</u> <u>RONALD J. EIDSON, 3239</u> <u>GARY L. JONES, 7977</u>

~~3~~
~~5000~~ PSI WP

SJS



THE FOLLOWING CONSTITUTE MINIMUM BLOWOUT PREVENTER REQUIREMENTS

- A. One double gate blowout preventer with lower rams for pipe and upper rams blind, all hydraulically controlled.
- B. Opening on preventers between rams to be flanged, studded or clamped and at least two inches in diameter.
- C. All connections from operating manifold to preventers to be all steel hose or tube a minimum of one inch in diameter.
- D. The available closing pressure shall be at least 15% in excess of that required with sufficient volume to operate (close, open, and re-close) the preventers.
- E. All connections to and from preventers to have a pressure rating equivalent to that of the BOP's.
- F. Manual controls to be installed before drilling cement plug.
- G. Valve to control flow through drill pipe to be located on rig floor.
- H. All chokes will be adjustable. Choke spool may be used between rams.

DIAGRAM 1