

NM OIL CONS. COMMISSION  
DRAWER DD UNITED STATES  
DEPARTMENT OF THE INTERIOR  
ARTESIA, NM 88210  
BUREAU OF LAND MANAGEMENTREVERSE SIDE  
(Other Instructions on reverse)FORM APPROVED 205-11-28284  
OMB NO. 1004-0136  
Expires: February 28, 1995

## APPLICATION FOR PERMIT TO DRILL OR DEEPEN

## 1a. TYPE OF WORK

DRILL ☒DEEPEN ☐

## b. TYPE OF WELL

OIL WELL ☒GAS WELL ☐OTHER ☐SINGLE ZONE ☐MULTIPLE ZONE ☐

## 2. NAME OF OPERATOR

Santa Fe Energy Operating Partners, L.P. 20290

## 3. ADDRESS AND TELEPHONE NO.

550 W. Texas, Suite 1330, Midland, TX 79701

## 4. LOCATION OF WELL (Report location clearly and in accordance with any State requirements.)

At surface

(O) 610' FSL &amp; 1930' FEL, Sec 13, T-24-S,R-30-E

At proposed prod. zone

## 14. DISTANCE IN MILES AND DIRECTION FROM NEAREST TOWN OR POST OFFICE\*

17 miles East of Loving, New Mexico

## 15. DISTANCE FROM PROPOSED\*

LOCATION TO NEAREST PROPERTY OR LEASE LINE, FT. 610'

(Also to nearest drig. unit line, if any)

## 18. DISTANCE FROM PROPOSED LOCATION\*

TO NEAREST WELL, DRILLING, COMPLETED, OR APPLIED FOR, ON THIS LEASE, FT. 1270'

## 16. NO. OF ACRES IN LEASE

320

## 19. PROPOSED DEPTH

8200'

## 17. NO. OF ACRES ASSIGNED TO THIS WELL

40

## 20. ROTARY OR CABLE TOOLS

Rotary

## 21. ELEVATIONS (Show whether DF, RT, GR, etc.)

3482' GR

## 22. APPROX. DATE WORK WILL START\*

November 1, 1994

## 23.

## PROPOSED CASING AND CEMENTING PROGRAM

Secretary's Potash

SIZE OF HOLE	GRADE SIZE OF CASING	WEIGHT PER FOOT	SETTING DEPTH	QUANTITY OF CEMENT
17-1/2"	H-40 13-3/8"	48.0	400'	400 sx to circulate
11"	K-55 8-5/8"	32.0	4000'	1350 sx to circulate
7-7/8"	K-55 5-1/2"	15.5 & 17.0	8200'	Tie back to 3800' SDS

We propose to drill to a depth sufficient to test the Delaware formation for oil. If productive 5-1/2" casing will be run to TD. If non-productive, the well will be plugged and abandoned in a manner consistent with Federal Regulations. Specific programs as per Onshore Oil and Gas Order No. 1 are outlined in the following attachments:

## Drilling Program

Exhibit A - Operations Plan  
Exhibit B - BOP and Choke Manifold  
Exhibit C - Drilling Fluid Program  
Exhibit D - Auxiliary Equipment

Exhibit E - Topo Map of Location  
Exhibit F - Map Showing Existing Wells  
Exhibit F(A) - Plat of Location  
Exhibit G - Well Site Layout  
Surface Use and Operations Plan

IN ABOVE SPACE DESCRIBE PROPOSED PROGRAM: If proposal is to deepen, give data on present productive zone and proposed new productive zone. If proposal is to drill or deepen directionally, give pertinent data on subsurface locations and measured and true vertical depths. Give blowout preventer program, if any.

SIGNED James O. Phil Stinson TITLE Agent for Santa Fe EnergyDATE 9-22-94

(This space for Federal or State office use)

PERMIT NO. \_\_\_\_\_ APPROVAL DATE \_\_\_\_\_

Application approval does not warrant or certify that the applicant holds legal or equitable title to those rights in the subject lease which would entitle the applicant to conduct operations thereon.

CONDITIONS OF APPROVAL, IF ANY:

APPROVED BY \_\_\_\_\_ TITLE \_\_\_\_\_ DATE 10-1-94

\*See Instructions On Reverse Side

Title 18 U.S.C. Section 1001, makes it a crime for any person knowingly and willfully to make to any department or agency of the United States any false, fictitious or fraudulent statements or representations as to any matter within its jurisdiction.

DISTRICT I  
P. O. Box 1980  
Hobbs, NM 88241-1980

State of New Mexico  
Egy, Minerals, and Natural Resources Department

Form C-102  
Revised 02-10-94

Instructions on back

DISTRICT II  
P. O. Drawer DD  
Artesia, NM 88211-0719

## OIL CONSERVATION DIVISION

P. O. Box 2088  
Santa Fe, New Mexico 87504-2088

Submit to the Appropriate  
District Office  
State Lease - 4 copies  
Fee Lease - 3 copies

DISTRICT III  
1000 Rio Brazos Rd.  
Aztec, NM 87410

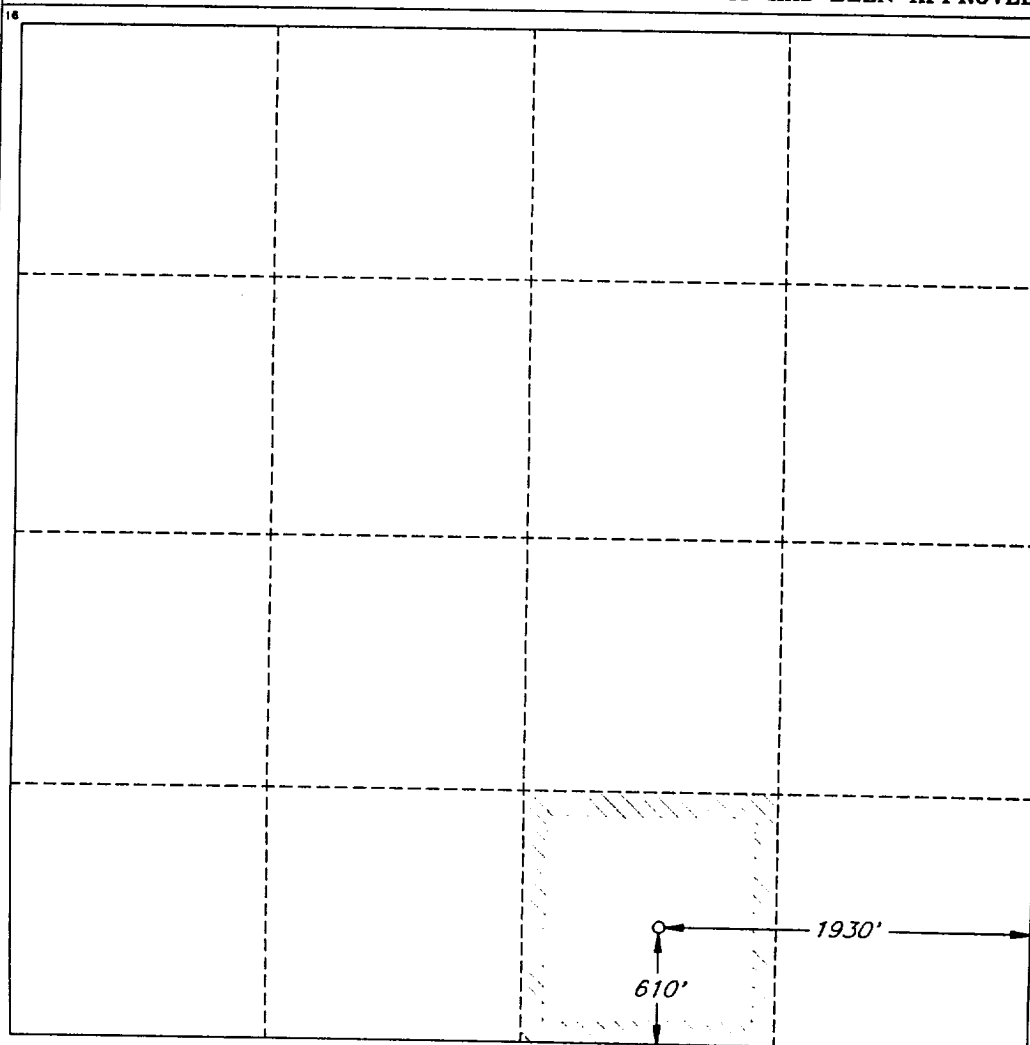
☐ AMENDED REPORT

DISTRICT IV  
P. O. Box 2088  
Santa Fe, NM 87507-2088

### WELL LOCATION AND ACREAGE DEDICATION PLAT

1 API Number		2 Pool Code		3 Pool Name Undesignated (Delaware)					
4 Property Code 0		5 Property Name PALLADIUM '13' FEDERAL						6 Well Number 2	
7 OGRID No.		8 Operator Name SANTA FE ENERGY OPER. PART, L.P.						9 Elevation 3482'	
10 SURFACE LOCATION									
UL or lot no. 0	Section 13	Township 24 SOUTH	Range 30 EAST, N.M.P.M.	Lot Ida	Feet from the 880' 610'	North/South line SOUTH	Feet from the 1980' 1930'	East/West line EAST	County EDDY
11 BOTTOM HOLE LOCATION IF DIFFERENT FROM SURFACE									
UL or lot no.	Section	Township	Range	Lot Ida	Feet from the	North/South line	Feet from the	East/West line	County
12 Dedicated Acres 40		13 Joint or Infill		14 Consolidation Code		15 Order No.			

NO ALLOWABLE WELL BE ASSIGNED TO THIS COMPLETION UNTIL ALL INTERESTS HAVE BEEN CONSOLIDATED OR A NON-STANDARD UNIT HAS BEEN APPROVED BY THE DIVISION



#### OPERATOR CERTIFICATION

I hereby certify that the information contained herein is true and complete to the best of my knowledge and belief.

Signature

*James P. (Phil) Stinson*

Printed Name

James P. (Phil) Stinson

Title

Agent for Santa Fe Energy

Date

9-22-94

#### SURVEYOR CERTIFICATION

I hereby certify that the well location shown on this plat was plotted from field notes of actual surveys made by me or under my supervision, and that the same is true and correct to the best of my belief.

Date of Survey

SEPTEMBER 21, 1994

Signature and Seal of Professional Surveyor

V. LYNN  
BEZNER  
NO. 7920

Certified by LAND SURVEYOR  
V. L. BEZNER, R.S. #7920

JOB #35243 / 23 NE / V.H.B.

# EXHIBIT B

BOP AND CHOKE ARRANGEMENT  
 SANTA FE ENERGY OPERATING PARTNERS, L.P.  
 PALLADIUM "13" FED NO. 2  
 610' FSL & 1930' FEL  
 SEC 13, T-24-S, R-30-E  
 EDDY COUNTY, NEW MEXICO

