

DISTRICT I  
P. O. Box 1980, Hobbs, NM 88240

DISTRICT II  
P. O. Drawer DD, Artesia, NM 88210

DISTRICT III  
1000 Rio Brazos Rd., Aztec, NM 87410

DISTRICT IV  
P. O. Box 2088, Santa Fe, NM 87504-2088

State of New Mexico  
Energy, Minerals and Natural Resources Department

Form C-102  
Revised February 10, 1994

Instructions on back

OIL CONSERVATION DIVISION

PO Box 2088  
Santa Fe, NM 87504-2088

Submit to Appropriate District Office

State Lease-4 copies  
Fee Lease-3 copies

☐ AMENDED REPORT

WELL LOCATION AND ACREAGE DEDICATION PLAT

1 API Number		2 Pool Code		3 Pool Name 49ER Ridge SW, Bell Canyon					
4 Property Code		5 Property Name Remuda Basin State						6 Well Number 10	
7 OGRID No.		8 Operator Name TEXACO EXPLORATION & PRODUCTION, INC.						9 Elevation 3080'	

10 Surface Location

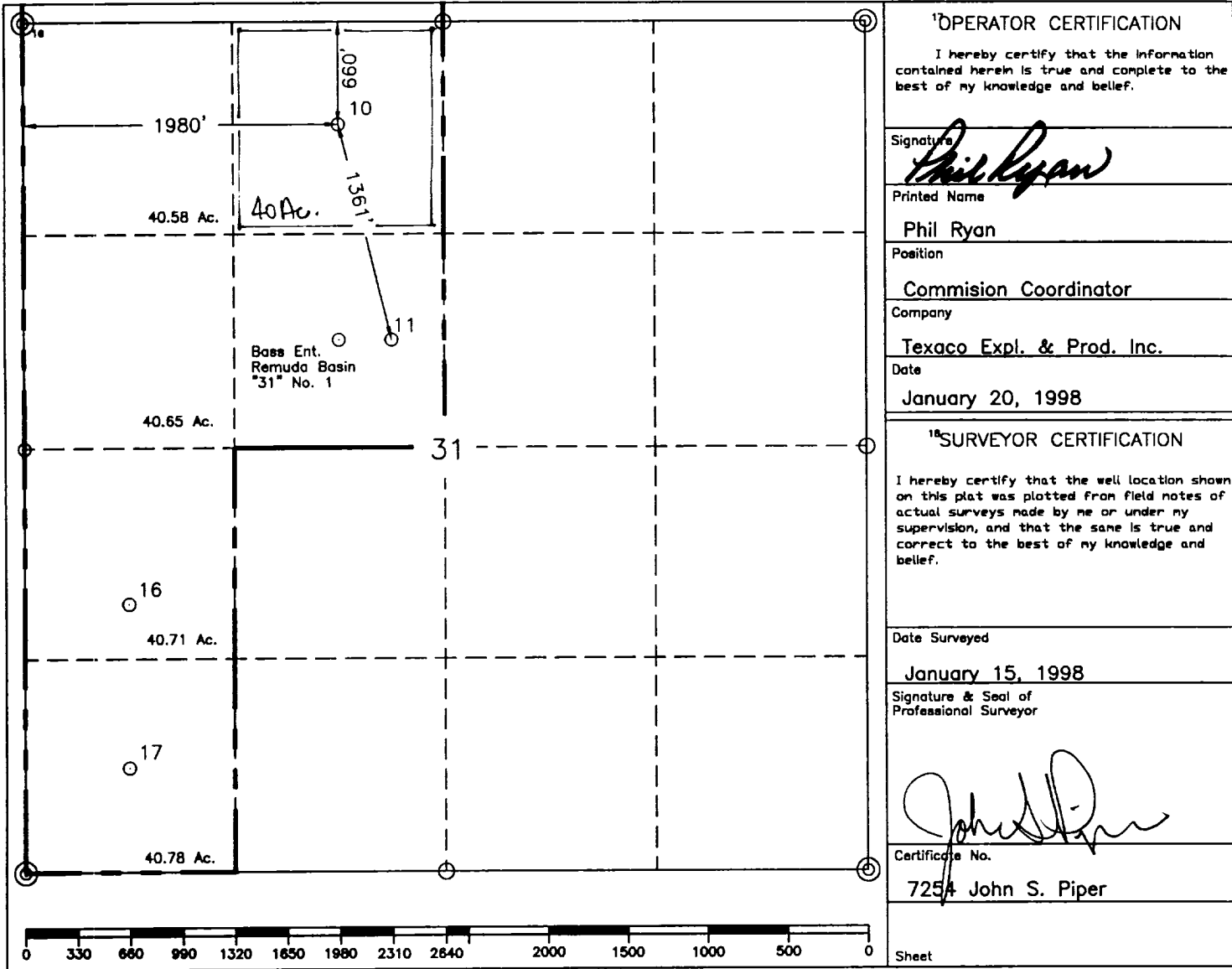
UL or lot no. C	Section 31	Township 23-S	Range 30-E	Lot Idn	Feet from the 660'	North/South line North	Feet from the 1980'	East/West line West	7 County Eddy
--------------------	---------------	------------------	---------------	---------	-----------------------	---------------------------	------------------------	------------------------	------------------

11 Bottom Hole Location If Different From Surface

UL or lot no.	Section	Township	Range	Lot Idn	Feet from the	North/South line	Feet from the	East/West line	7 County
---------------	---------	----------	-------	---------	---------------	------------------	---------------	----------------	----------

12 Dedicated Acres 40	13 Joint or Infill	14 Consolidation Code	15 Order No.
--------------------------	--------------------	-----------------------	--------------

NO ALLOWABLE WILL BE ASSIGNED TO THIS COMPLETION UNTIL ALL INTERESTS HAVE BEEN CONSOLIDATED  
OR A NON-STANDARD UNIT HAS BEEN APPROVED BY THE DIVISION.



16 OPERATOR CERTIFICATION

I hereby certify that the information contained herein is true and complete to the best of my knowledge and belief.

Signature  
*Phil Ryan*

Printed Name  
Phil Ryan

Position  
Commission Coordinator

Company  
Texaco Expl. & Prod. Inc.

Date  
January 20, 1998

17 SURVEYOR CERTIFICATION

I hereby certify that the well location shown on this plat was plotted from field notes of actual surveys made by me or under my supervision, and that the same is true and correct to the best of my knowledge and belief.

Date Surveyed  
January 15, 1998

Signature & Seal of Professional Surveyor  
*John S. Piper*

Certificate No.  
7254 John S. Piper

Sheet

○ = Staked Location ● = Producing Well ↗ = Injection Well ◇ = Water Supply Well ◆ = Plugged & Abandon Well  
⊙ = Found Section Corner, 2 or 3" Iron Pipe & GLO B.C. ○ = Found 1/4 Section Corner, 1" Iron Pipe & GLO B.C.

ADDITIONAL INFORMATION ON THE LOCATION

State Plane Coordinates			
Northing 460956.28		Easting 626930.47	
Latitude 32°15'59.825"		Longitude 103°55'21.655"	
Zone	North American Datum	Combined Grid Factor	Coordinate File
East	1927	.9997765	Remuda27.cr5
Drawing File		Field Book	
R_B31ST10.DWG		Eddy Co. FB. 5, Pg. 5	