

**NM OIL CON. COMMISSION**  
**ARTESIA, NM 88210**  
**UNITED STATES**  
**DEPARTMENT OF THE INTERIOR**  
**BUREAU OF LAND MANAGEMENT**

SUBMIT IN ☐ **PLICATE\***  
(Other instructions on  
reverse side)

Form approved.  
Budget Bureau No. 1004-0136  
Expires August 31, 1985

50-015-28389

C/K  
PB

**APPLICATION FOR PERMIT TO DRILL, DEEPEN, OR PLUG BACK**

**1a. TYPE OF WORK**

DRILL ☒

DEEPEN ☐

PLUG BACK ☐

**b. TYPE OF WELL**

OIL  
WELL ☒

GAS  
WELL ☐

OTHER

SINGLE  
ZONE ☒

MULTIPLE  
ZONE ☐

**2. NAME OF OPERATOR**

Pogo Producing Company

17891

**3. ADDRESS OF OPERATOR**

P.O.Box 10340, Midland, Texas 79702

**4. LOCATION OF WELL (Report location clearly and in accordance with any State requirements.)\***

At surface

2130' FNL & 1980' FWL of Section 23, T-24S, R-29E

At proposed prod. zone

Same

Unit (F)

**14. DISTANCE IN MILES AND DIRECTION FROM NEAREST TOWN OR POST OFFICE\***

5 miles ESE of Malaga, New Mexico

**15. DISTANCE FROM PROPOSED\***

LOCATION TO NEAREST  
PROPERTY OR LEASE LINE, FT.  
(Also to nearest drlg. unit line, if any)

1980

**16. NO. OF ACRES IN LEASE**

40

**17. NO. OF ACRES ASSIGNED  
TO THIS WELL**

40

**18. DISTANCE FROM PROPOSED LOCATION\*  
TO NEAREST WELL, DRILLING, COMPLETED,  
OR APPLIED FOR, ON THIS LEASE, FT.**

1320'

**19. PROPOSED DEPTH**

8100'

**20. ROTARY OR CABLE TOOLS**

Rotary

**21. ELEVATIONS (Show whether DF, RT, GR, etc.)**

2999' Ground Level

Carlsbad Controlled Water Basin

**22. APPROX. DATE WORK WILL START\***

Upon approval of App.

**23.**

**PROPOSED CASING AND CEMENTING PROGRAM**

SIZE OF HOLE	SIZE OF CASING	WEIGHT PER FOOT	SETTING DEPTH	QUANTITY OF CEMENT
17 1/2"	13 3/8"	54.5#	450'	Sufficient to Circulate
11"	8 5/8"	32 - 24#	3050'	Sufficient to Circulate
7 7/8"	5 1/2"	17 - 15.5#	8100'	1200 sx

Post ID-1  
3-24-95  
New Loc. & API

AFTER SETTING PRODUCTION CASING, PAY ZONE WILL BE PERFORATED  
STIMULATED AS NECESSARY.

SEE ATTACHED FOR: SUPPLEMENTAL DRILLING DATA  
BOP SKETCH  
SURFACE USE AND OPERATIONS PLAN

**RECEIVED**

MAR 16 1995

**OIL CON. DIV.**  
**DIST. 2**

**Approval Subject to  
General Requirements and  
Special Stipulations  
Attached**

IN ABOVE SPACE DESCRIBE PROPOSED PROGRAM: If proposal is to deepen or plug back, give data on present productive zone and proposed new productive zone. If proposal is to drill or deepen directionally, give pertinent data on subsurface locations and measured and true vertical depths. Give blowout preventer program, if any.

**24.**

SIGNED

*James M. C. Kelly*

TITLE

Agent

DATE

November 17, 1984

(This space for Federal or State office use)

PERMIT NO.

APPROVAL DATE

APPROVED BY

(CRIG. SGD.) RICHARD L. MANUS

TITLE

AREA MANAGER

DATE

3-14-95

CONDITIONS OF APPROVAL, IF ANY:

\*See Instructions On Reverse Side

Title 18 U.S.C. Section 1001, makes it a crime for any person knowingly and willfully to make to any department or agency of the United States any false, fictitious or fraudulent statements or representations as to any matter within its jurisdiction.

DISTRICT I  
P.O. Box 1980, Hobbs, NM 88240

State of New Mexico  
Energy, Minerals and Natural Resources Department

Form C-102  
Revised February 10, 1994  
Instruction on back  
Submit to Appropriate District Office  
State Lease - 4 Copies  
Fee Lease - 3 Copies

DISTRICT II  
P.O. Drawer DD, Artesia, NM 88210

DISTRICT III  
1000 Rio Brazos Rd., Aztec, NM 87410

OIL CONSERVATION DIVISION

P.O. Box 2088  
Santa Fe, New Mexico 87504-2088

☐ AMENDED REPORT

WELL LOCATION AND ACREAGE DEDICATION PLAT

API Number <b>30-015-28389</b>	Pool Code <b>96036</b>	Pool Name <b>WILDCAT; Grp. 5</b>
Property Code <b>15019</b>	Property Name <b>RIVER BEND FEDERAL</b>	Well Number <b>2</b>
OGRID No. <b>017891</b>	Operator Name <b>POGO PRODUCING CO.</b>	Elevation <b>2999'</b>

Surface Location

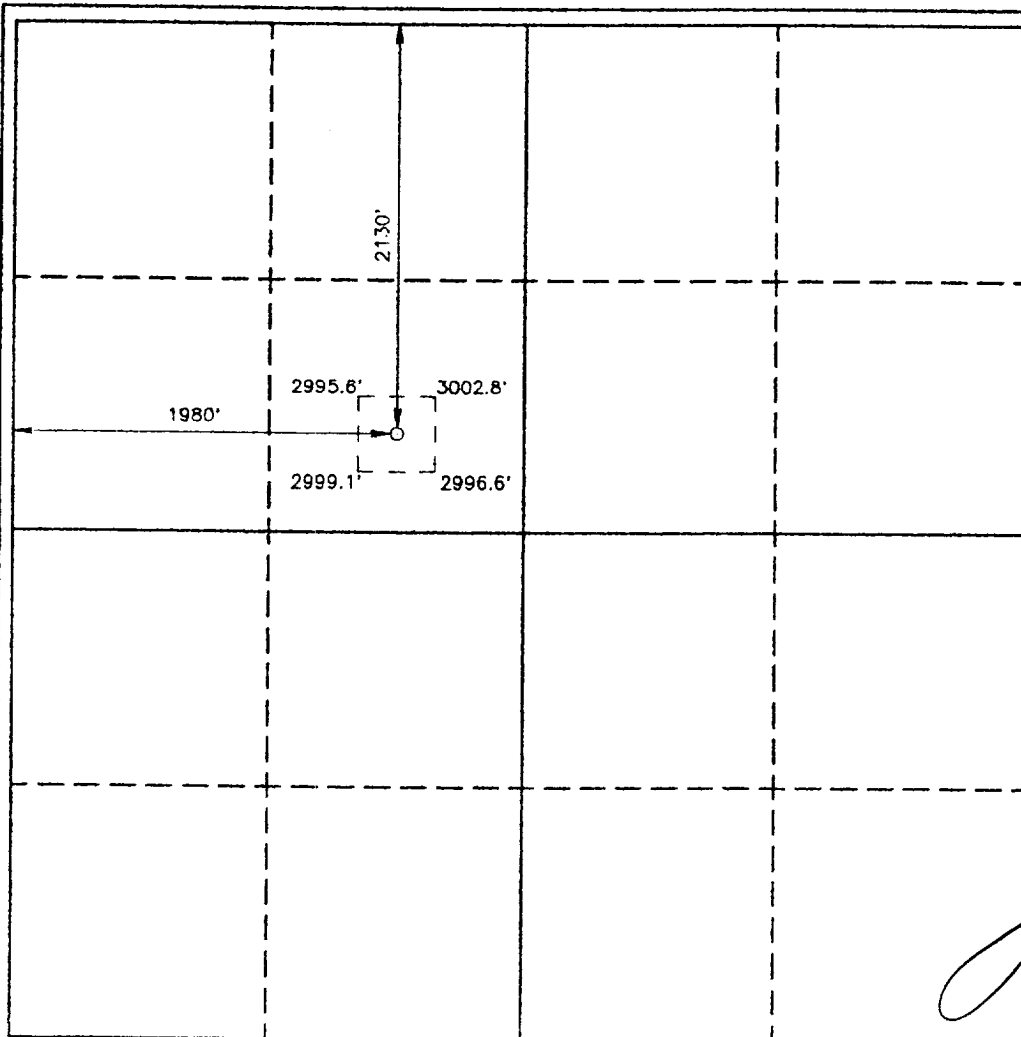
UL or lot No. <b>F</b>	Section <b>23</b>	Township <b>24S</b>	Range <b>29E</b>	Lot Idn	Feet from the <b>2130</b>	North/South line <b>NORTH</b>	Feet from the <b>1980</b>	East/West line <b>WEST</b>	County <b>EDDY</b>
---------------------------	----------------------	------------------------	---------------------	---------	------------------------------	----------------------------------	------------------------------	-------------------------------	-----------------------

<sup>11</sup> Bottom Hole Location If Different From Surface

UL or lot No.	Section	Township	Range	Lot Idn	Feet from the	North/South line	Feet from the	East/West line	County
---------------	---------	----------	-------	---------	---------------	------------------	---------------	----------------	--------

Dedicated Acres <b>40</b>	Joint or Infill	Consolidation Code	Order No.
------------------------------	-----------------	--------------------	-----------

**NO ALLOWABLE WILL BE ASSIGNED TO THIS COMPLETION UNTIL ALL INTERESTS HAVE BEEN CONSOLIDATED OR A NON-STANDARD UNIT HAS BEEN APPROVED BY THE DIVISION**



OPERATOR CERTIFICATION

I hereby certify the the information contained herein is true and complete to the best of my knowledge and belief.

*James M. C. Ritchie, Jr.*  
Signature  
**James M. C. Ritchie, Jr.**  
Printed Name  
**Agent**  
Title  
**Nov. 17<sup>th</sup> 1994**  
Date

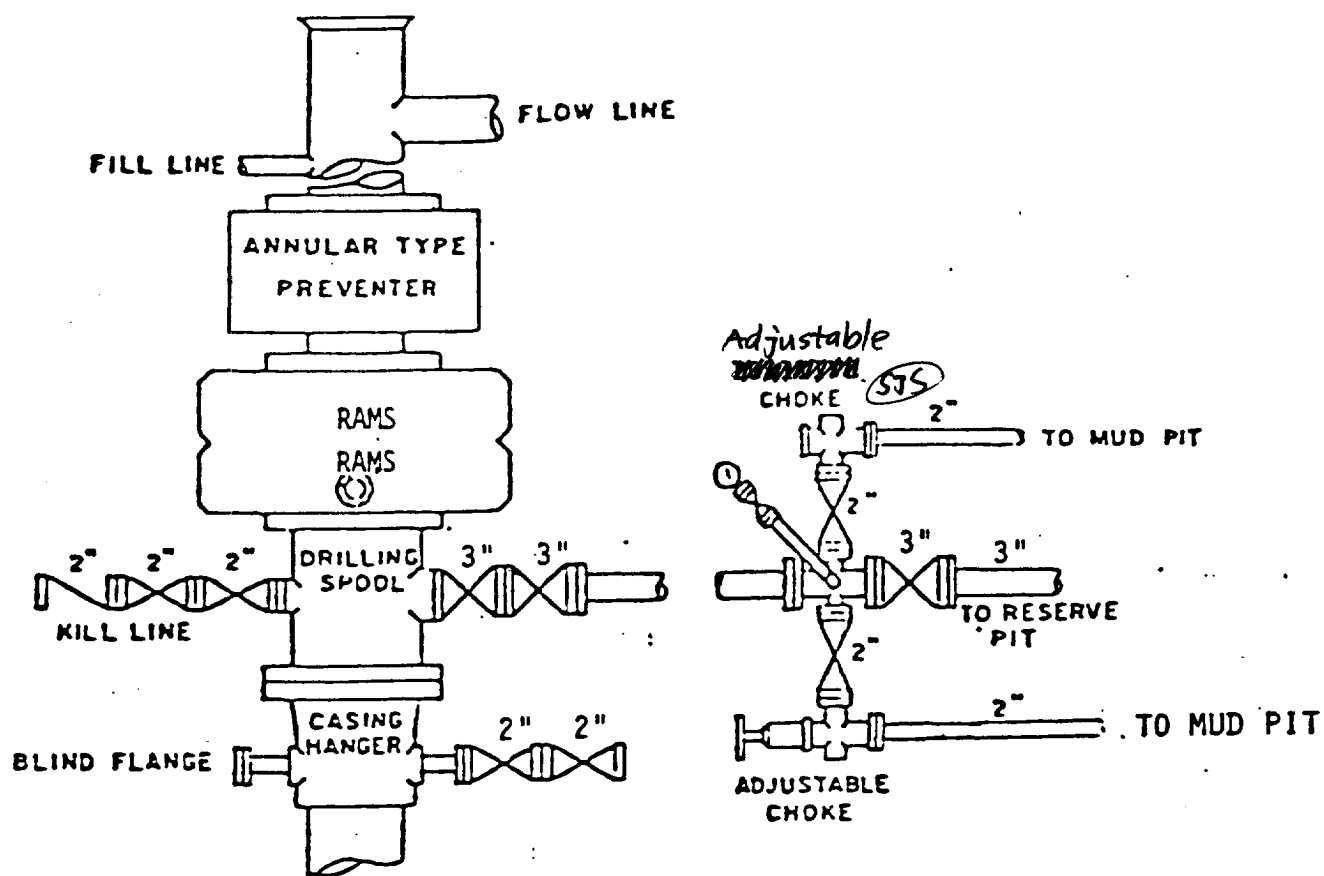
SURVEYOR CERTIFICATION

I hereby certify that the well location shown on this plat was plotted from field notes of actual surveys made by me or under my supervision, and that the same is true and correct to the best of my belief.

Date Surveyed  
Signature  
Seal No.  
Professional Surveyor  
**678**

**W.O. NOV 24 1994**

Certificate No. **JOHN W. WEST, 676**  
**RONALD J. EIDSON, 3239**



BOP STACK

3000 PSI WORKING PRESSURE

BOP ARRANGEMENT