

DISTRICT II
P. O. Drawer DD
Artesia, NM 88211-0719

Submit to the Appropriate
District Office
State Lease - 4 copies
Fee Lease - 3 copies

DISTRICT III
1000 Rio Brazos Rd.
Aztec, NM 87410

OIL CONSERVATION DIVISION

**P. O. Box 2088
Santa Fe, New Mexico 87504-2088**

☐ AMENDED REPORT

DISTRICT IV
P. O. Box 2088
Santa Fe, NM 87507-2088

WELL LOCATION AND ACREAGE DEDICATION PLAT

1 API Number 30-015-28403	2 Pool Code	3 Pool Name Wildcat (SWD)
4 Property Code	5 Property Name Knoll "8" OLD RANCH NO FEDERAL	6 Well Number 4
7 OGRID No.	8 Operator Name SANTA FE ENERGY OPER. PART, L.P.	9 Elevation 4122'

" SURFACE LOCATION

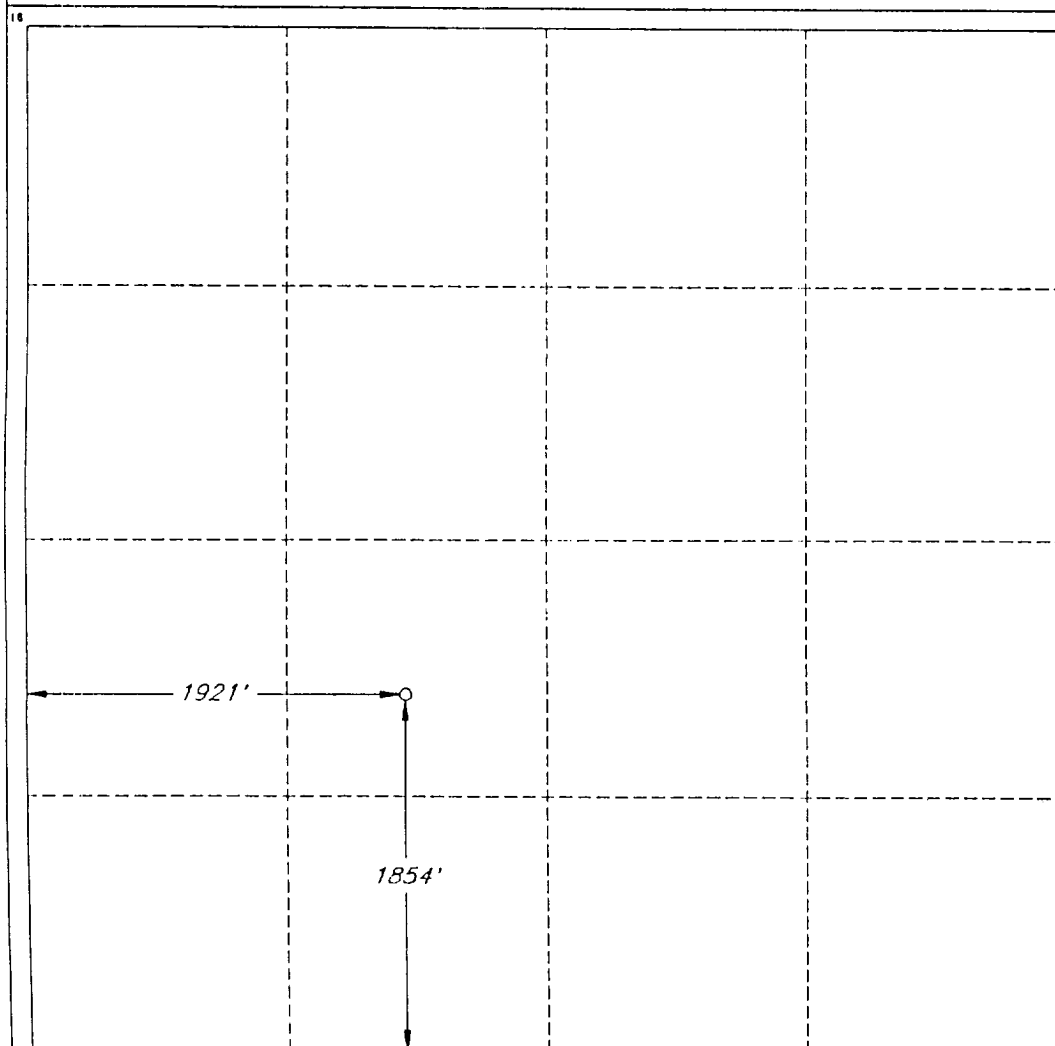
UL or lot no. K	Section 8	Township 22 SOUTH	Range 24 EAST, N.M.P.M.	Lot Ida	Feet from the 1854'	North/South line SOUTH	Feet from the 1854' 1921'	East/West line WEST	County EDDY
---------------------------	---------------------	-----------------------------	-----------------------------------	---------	-------------------------------	----------------------------------	-------------------------------------	-------------------------------	-----------------------

" BOTTOM HOLE LOCATION IF DIFFERENT FROM SURFACE

UL or lot no.	Section	Township	Range	Lot Ida	Feet from the	North/South line	Feet from the	East/West line	County
---------------	---------	----------	-------	---------	---------------	------------------	---------------	----------------	--------

12 Dedicated Acres 0	13 Joint or Infill	14 Consolidation Code	15 Order No.
--------------------------------	--------------------	-----------------------	--------------

**NO ALLOWABLE WELL BE ASSIGNED TO THIS COMPLETION UNTIL ALL INTERESTS HAVE BEEN
CONSOLIDATED OR A NON-STANDARD UNIT HAS BEEN APPROVED BY THE DIVISION**



OPERATOR CERTIFICATION

*I hereby certify that the information
contained herein is true and complete
to the best of my knowledge and belief.*

Signature
James P. "Phil" Stinson

Printed Name
James P. "Phil" Stinson

Title
Agent for Santa Fe Resources

Date
February 6, 1995

SURVEYOR CERTIFICATION

*I hereby certify that the well
location shown on this plat was
plotted from field notes of actual
surveys made by me or under
my supervision, and that the
same is true and correct to the
best of my belief.*

Date of Survey
FEBRUARY 2, 1995

Signature and Seal of
Professional Surveyor

[Signature]
STATE OF NEW MEXICO
LYNN BEZNER
NO. 7920

Certificate No.
V. L. BEZNER R.P.S. #7920

JOB #57856 / 1151-NE / V.H.B.