

UNITED STATES  
DEPARTMENT OF THE INTERIOR  
BUREAU OF LAND MANAGEMENT

ARTESIA, NM 88002  
Submit in Triplicate  
(Other States: Reverse side)

FORM APPROVED  
Budget Bureau No. 1004-1036  
Expires: December 31, 1991

FO APPLICATION FOR PERMIT TO DRILL OR DEEPEN

1a. Type of Work

DRILL ☒

DEEPEN ☐

b. Type of Well

☒ Oil

☐ Gas

☐ Other

☐ Single Zone

☐ Multiple Zone

2. Name of Operator

Merit Energy Company

14591

3. Address and Telephone No.

P.O. Drawer NN - Jal, NM 88252

(505)395-1433

4. Location of Well (Report location clearly and in accordance with any State requirements.)

At Surface:

Unit P - Sec 5, T24S R31E

660' FSL and 660' FEL - Eddy County, NM

At proposed prod. zone:

Same as above

14. Distance in miles and direction from nearest Town or Post Office\*

21 miles East of Loving, NM

15. Distance from proposed\* location to nearest property or lease line. Ft. (Also to nearest drilg unit line, if any)

3300' to West

16. No. of acres in lease

1682.12

17. No. of acres assigned to this well

40(forty)

18. Distance from proposed location\* to nearest well drilling, completed, or applied for, on this lease, ft

1320' to North

19. Proposed Depth

8200'

20. Rotary or Cable Tools

Rotary

21. Elevations (Show whether DF, RT, GR, ect.

3430.7 Carlsbad Controlled Water Basin

R-111-P Potash

22. Approx date work will start\*

ASAP

23.

PROPOSED CASING AND CEMENTING PROGRAM

Size of Hole	Grade, Size of Casing	Weight Per Foot	Setting Depth	Quantity of Cement
17 1/2	13 3/8	54.5	650	550sx (Circ)
11	8 5/8	24 & 32#	4200	921sx (Circ)
7 7/8	5 1/2	15.5 & 17#	8200	783sx(tie back)

Merit Energy Company proposes to drill and test the Delaware & intermediate formations. Approx. 650' surface casing will be set & circulated to surface. Approx. 4200' of intermediate casing will be set & circulated to surface. If well is commercial, production casing will be ran & cemented tying back into 8 5/8 intermediate casing, perforated & stimulated as needed for production.

Mud Program FW to 650', cut Brine to 4200', cut brine to 8200'.

BOPE Program: BOPE will be installed at the offset and tested daily for operational condition.

Approved Subject to  
General Requirements and  
Special Stipulations

IN ABOVE SPACE (If proposed PROGRAM: If proposal is to deepen, give data on present productive zone and proposed new productive zone. If proposal is to drill or deepen directionally, give pertinent data on subsurface locations and measured and true vertical depths. Give blowout preventer program, if any.

24.

Signed

*Russell White*

Title West District, Operations Supt

Date

4-20-95

(This space for Federal or State office use)

Permit No.

Approval Date

Application approval does not warrant or certify that the applicant hold legal or equitable title to those rights in the subject lease which would entitle the applicant to conduct operations thereon.

Conditions of approval, if any:

Approved by

*Isi Gilbert Lucero*

Title

A.S.D.

Date

5/30/95

\*See Instruction of Reverse Side

Title 18 U.S.C.. Section 1001, makes it a crime for any person knowingly and willfully to make to any department or agency of the United States any false, fictitious or fraudulent statements or representations as to any matter within its jurisdiction.

OIL CONSERVATION DIVISION

DISTRICT I  
P.O. Box 1980, Hobbs, NM 88240

P.O. Box 2088  
Santa Fe, New Mexico 87504-2088

DISTRICT II  
P.O. Drawer DD, Artesia, NM 88210

DISTRICT III  
1000 Rio Brazos Rd., Aztec, NM 87410

WELL LOCATION AND ACREAGE DEDICATION PLAT

All Distances must be from the outer boundaries of the section

Operator MERIT ENERGY COMPANY			Lease SUNDANCE FEDERAL		Well No. 17
Unit Letter P	Section 5	Township 24 SOUTH	Range 31 EAST	NMPM	County EDDY

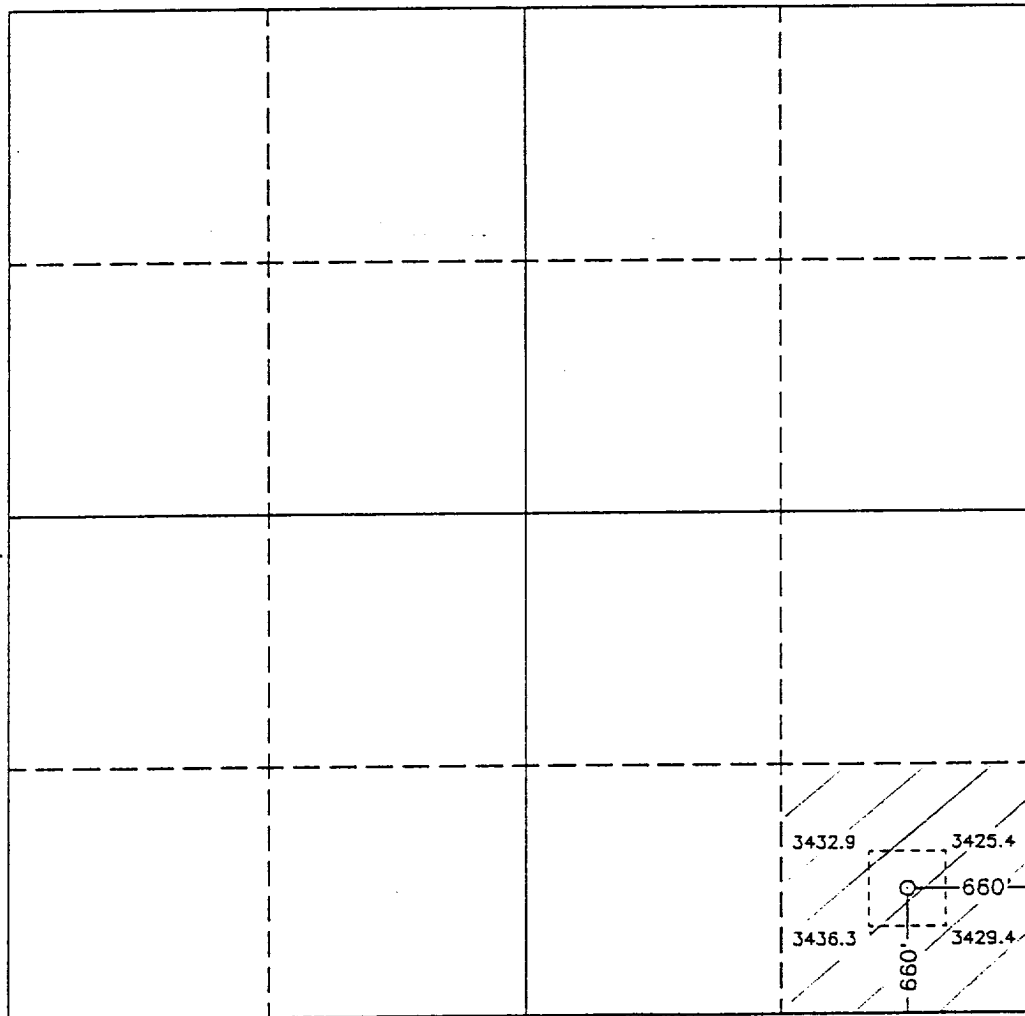
Actual Footage Location of Well:  
660 feet from the SOUTH line and 660 feet from the EAST line

Ground Level Elev. 3430.7	Producing Formation DELAWARE	Pool SANDUNGS WEST	Dedicated Acreage: 40 Acres
------------------------------	---------------------------------	-----------------------	--------------------------------

- Outline the acreage dedicated to the subject well by colored pencil or hatchure marks on the plat below.
- If more than one lease is dedicated to the well, outline each and identify the ownership thereof (both as to working interest and royalty).
- If more than one lease of different ownership is dedicated to the well, have the interest of all owners been consolidated by communitization, unitization, force-pooling, etc.?  
☐ Yes ☐ No If answer is "yes" type of consolidation \_\_\_\_\_

If answer is "no" list of owners and tract descriptions which have actually been consolidated. (Use reverse side of this form necessary.)

No allowable will be assigned to the well unit all interests have been consolidated (by communitization, unitization, forced-pooling, otherwise) or until a non-standard unit, eliminating such interest, has been approved by the Division.



OPERATOR CERTIFICATION

I hereby certify that the information contained herein is true and complete to the best of my knowledge and belief.

Signature  
*Russell Whited*  
Printed Name  
Russell Whited  
Position  
Production Supt.  
Company  
Merit Energy  
Date  
6-8-93

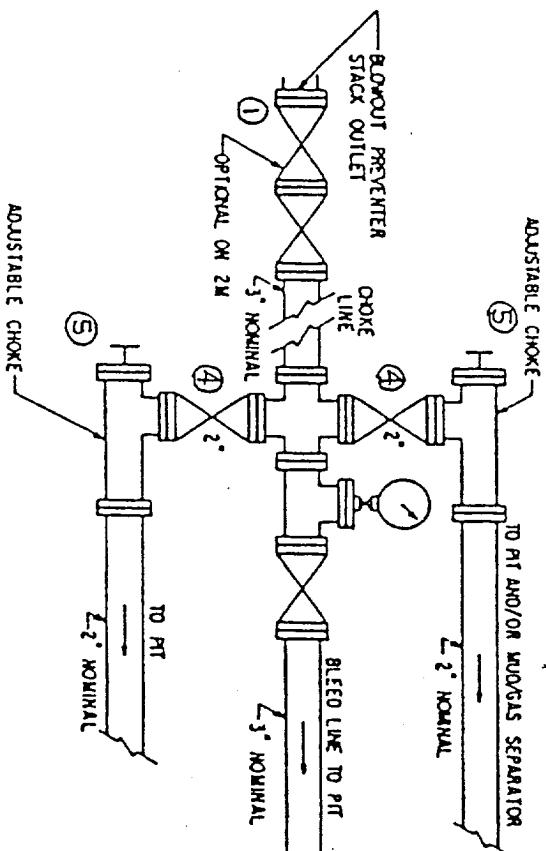
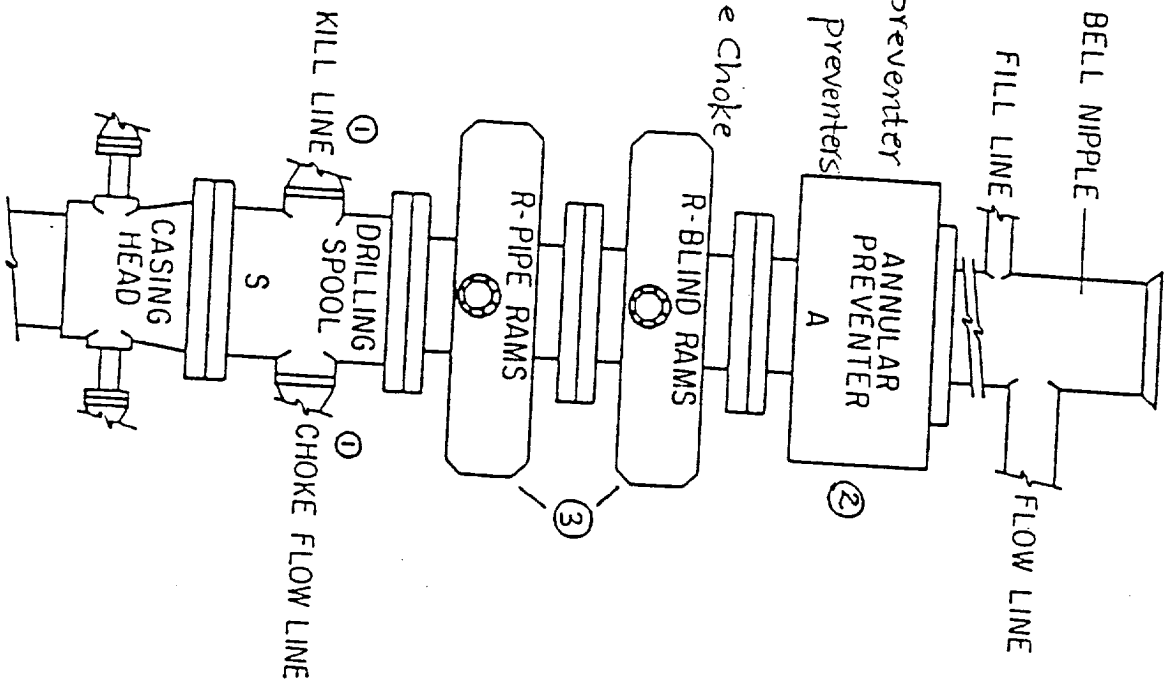
SURVEYOR CERTIFICATION

I hereby certify that the well location shown on this plat was plotted from field notes of actual surveys made by me or under my supervision, and that the same is true and correct to the best of my knowledge and belief.

Date Surveyed  
MARCH 5, 1993  
Signature & Seal of Professional Surveyor  
*Gary L. Jones*  
Certificate No. 1  
JOHN W. WEST, 676  
RONALD L. EDSON, 3239  
GARY L. JONES, 7977

93-11-0364

- ① 3" Series 900 Valve
- ② Series 900 Annular Preventer
- ③ Series 900 Ram-Type Preventers
- ④ 2" Series 900 Valve
- 2" Series 900 Adjustable Choke



EX-2-B