

NMOC

ckf

Form 3160-3  
(December 1990)SUBMIT IN TR ATE\*  
(Other instructions on  
reverse side)Form approved,  
Budget Bureau No. 1004-0136  
Expires: December 31, 1991

K-15

UNITED STATES  
DEPARTMENT OF THE INTERIOR  
BUREAU OF LAND MANAGEMENT

1388

## APPLICATION FOR PERMIT TO DRILL OR DEEPEN

## 1a. TYPE OF WORK

DRILL ☒DEEPEN ☐

## b. TYPE OF WELL

OIL  
WELL ☒GAS  
WELL ☐

OTHER

SINGLE  
ZONE ☒MULTIPLE  
ZONE ☐

## 2. NAME OF OPERATOR

Collins &amp; Ware, Inc.

4874

## 3. ADDRESS AND TELEPHONE NO.

508 W. Wall, Suite 1200, Midland, Texas 79701 (915) 687-3435

4. LOCATION OF WELL (Report location clearly and in accordance with any State requirements.)\*  
At surface

660' FSL &amp; 1980' FWL

At proposed prod. zone

Same

UNIT N

## 14. DISTANCE IN MILES AND DIRECTION FROM NEAREST TOWN OR POST OFFICE\*

Approximately 10 miles NE of Artesia, New Mexico

## 15. DISTANCE FROM PROPOSED\*

LOCATION TO NEAREST  
PROPERTY OR LEASE LINE, FT.  
(Also to nearest drlg. unit line, if any)

660'

## 16. NO. OF ACRES IN LEASE

320

## 17. NO. OF ACRES ASSIGNED

TO THIS WELL  
4018. DISTANCE FROM PROPOSED LOCATION\*  
TO NEAREST WELL, DRILLING, COMPLETED,  
OR APPLIED FOR, ON THIS LEASE, FT.

## 19. PROPOSED DEPTH

1600'

## 20. ROTARY OR CABLE TOOLS

Air Drilling

## 21. ELEVATIONS (Show whether DF, RT, GR, etc.)

3565' GR

SJS

## 22. APPROX. DATE WORK WILL START\*

September 1, 1995

## 23.

## PROPOSED CASING AND CEMENTING PROGRAM

SIZE OF HOLE	GRADE, SIZE OF CASING	WEIGHT PER FOOT	SETTING DEPTH	QUANTITY OF CEMENT
12 1/4	8 5/8 K-55	24	350'	300 SX Circ to Surface
7 7/8	5 1/2 K-55	15.5	1600'	425 SX Circ to Surface

Operator proposes to drill a test to the Premier Sands formation. If successful and commercial quantities of oil and/or gas are present, 5 1/2" production casing will be run to TD. If non-commercial, the test will be P&A in a manner consistent with Federal and State regulations and according to good engineering practices.

Specific programs according to Onshore Oil and Gas Order #1 are outlined in the following attachments.

Part ID-1  
9-22-95  
New Loc +  
API

RECEIVED

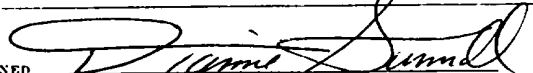
SEP 11 1995

OIL CON. DIV.

IN ABOVE SPACE DESCRIBE PROPOSED PROGRAM: If proposal is to deepen, give data on present productive zone and proposed new productive zone. If proposal is to drill or deepen directionally, give pertinent data on subsurface locations and measured and true vertical depths. Give blowdown test results, if any.

## 24.

SIGNED



TITLE

Dianne Sumrall  
Production Clerk

DATE

8/2/95

(This space for Federal or State office use)

PERMIT NO.

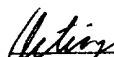
APPROVAL DATE

APPROVAL SUBJECT TO  
GENERAL REQUIREMENTS AND  
SPECIAL STIPULATIONS  
ATTACHED

Application approval does not warrant or certify that the applicant holds legal or equitable title to those rights in the subject lease which would entitle the applicant to conduct operations thereon.  
CONDITIONS OF APPROVAL, IF ANY:

APPROVED BY

TITLE



DATE

SEP 11 1995

\*See Instructions On Reverse Side

Title 18 U.S.C. Section 1001, makes it a crime for any person knowingly and willfully to make to any department or agency of the

District I  
PO Box 1980, Hobbs, NM 88241-1980

District II  
PO Drawer DD, Artesia, NM 88211-0719

District III  
1000 Rio Brasos Rd., Aztec, NM 87410

District IV  
PO Box 2088, Santa Fe, NM 87504-2088

State of New Mexico  
Energy, Minerals & Natural Resources Department

Form C-102  
Revised February 10, 1994  
Submit to Appropriate District Office  
State Lease - 4 Copies  
Fee Lease - 3 Copies

# OIL CONSERVATION DIVISION

PO Box 2088  
Santa Fe, NM 87504-2088

☐ AMENDED REPORT

## WELL LOCATION AND ACREAGE DEDICATION PLAT

1 API Number 30-015 - 28632	2 Pool Code 66002	3 Pool Name Eddy Undesignated (Premier Sands) G.p. 1
4 Property Code	5 Property Name C V "14" Federal	6 Well Number 2
7 OGRID No. 004874	8 Operator Name Collins & Ware, Inc.	9 Elevation 3565

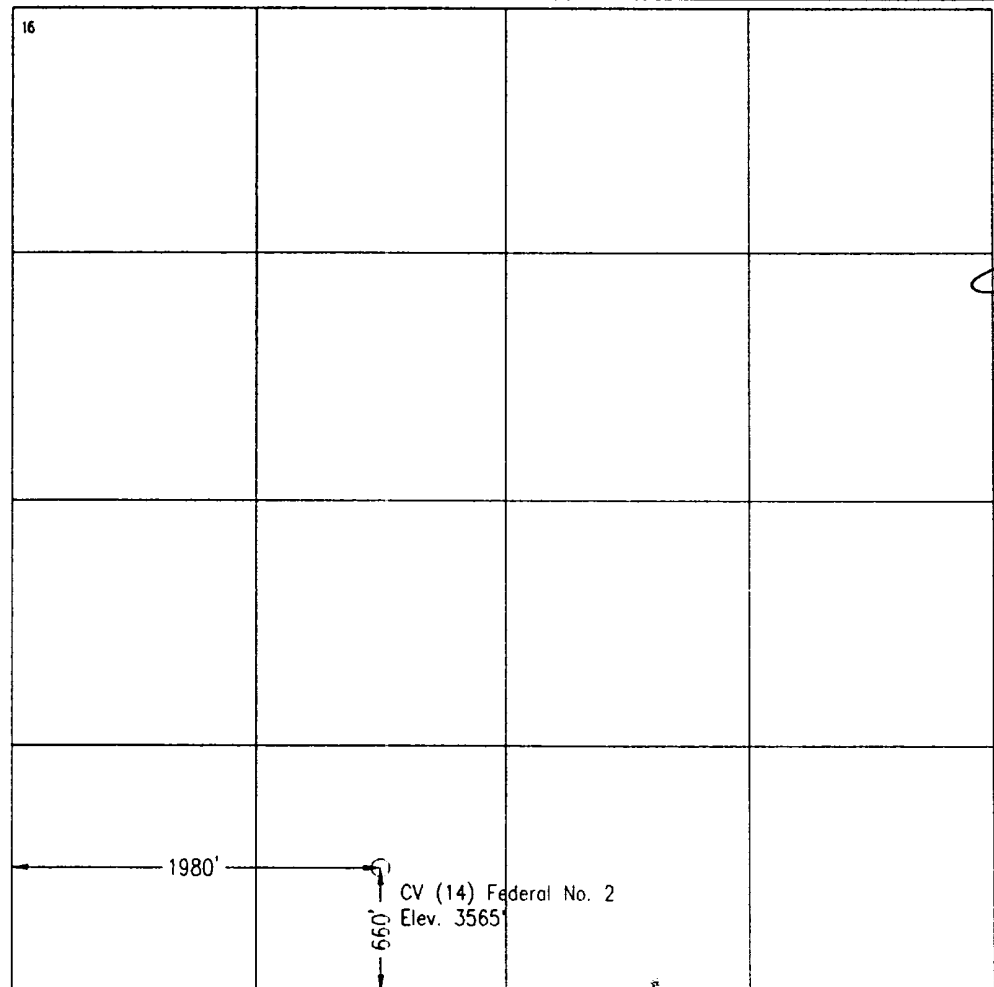
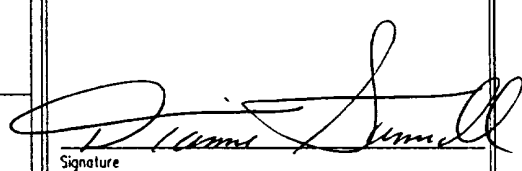
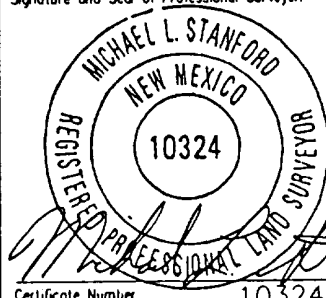
### <sup>10</sup>Surface Location

UL or lot no. N	Section 14	Township 16 S	Range 27 E	Lot Idn	Feet from the 660	North/South line South	Feet from the 1980	East/West line West	County Eddy
--------------------	---------------	------------------	---------------	---------	----------------------	---------------------------	-----------------------	------------------------	----------------

### <sup>11</sup>Bottom Hole Location If Different From Surface

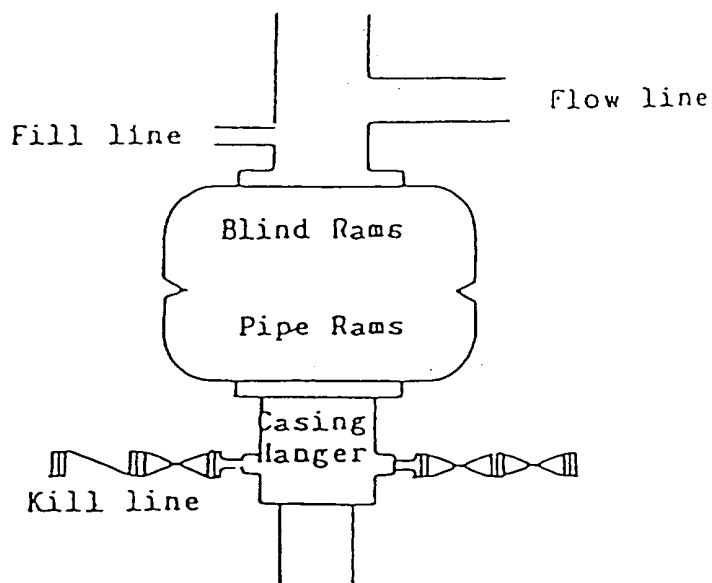
UL or lot no.	Section	Township	Range	Lot Idn	Feet from the	North/South line	Feet from the	East/West line	County
12 Dedicated Acres 40 320	13 Joint or Infill SJS	14 Consolidation Code	15 Order No.						

NO ALLOWABLE WILL BE ASSIGNED TO THIS COMPLETION UNIT ALL INTERESTS HAVE BEEN CONSOLIDATED  
OR A NON-STANDARD UNIT HAS BEEN APPROVED BY THE DIVISION

16 	17 <b>OPERATOR CERTIFICATION</b> <i>I hereby certify that the information contained herein is true and complete to the best of my knowledge and belief.</i>  Signature Dianne Sumrall Printed Name Production Clerk Title 8/3/95 Date
	18 <b>SURVEYOR CERTIFICATION</b> <i>I hereby certify that the well location shown on this plat was plotted from field notes of actual surveys made by me or under my supervision, and that the same is true and correct to the best of my belief.</i> August 2, 1995 Date of Survey Signature and Seal of Professional Surveyor.  Certificate Number 10324

10 Miles NE of Artesia, New Mexico.

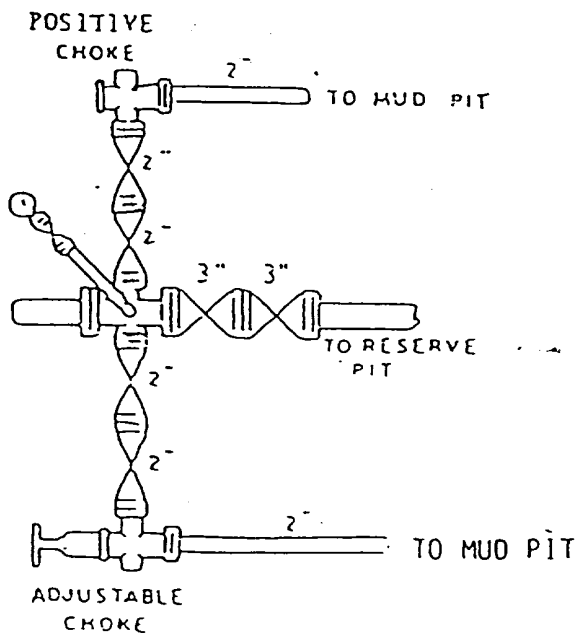
File No. A-0531



Blowout Preventer  
3000 psi working pressure

COLLINS & WARE, INC.

C V "14" FEDERAL #2  
SEC 14, T-16S, R-27E  
EDDY CO., NEW MEXICO  
EXHIBIT 1A



COLLINS & WARE, INC.

C V "14" FEDERAL #2  
 SEC 14, T-16S, R-27E  
 EDDY CO., NEW MEXICO  
 EXHIBIT 1A

**EXHIBIT 1A**  
**NOTES REGARDING THE BLOWOUT PREVENTERS**  
C V "14" Federal #2  
Eddy County, New Mexico

1. Drilling nipple to be so constructed that it can be removed without use of a welder through rotary table opening, with minimum I.D. equal to preventer bore.
2. Wear ring to be properly installed in head.
3. Blow out preventer and all fittings must be in good condition, 3000 psi W. P. minimum.
4. All fittings to be flanged.
5. Safety valve must be available on rig floor at all times with proper connections, valve to be full bore 3000 psi W. P. minimum.
6. All choke and fill lines to be securely anchored, especially ends of choke lines.
7. Equipment through which bit must pass shall be at least as large as the diameter of the casing being drilled through.
8. Kelly cock on kelly.
9. Extension wrenches and hand wheels to be properly installed.
10. Blow out preventer closing equipment to include minimum 40 gallon accumulator, two independent sources of pump power on each closing unit installation, and meet all API specifications.