

UNITED STATES  
DEPARTMENT OF THE INTERIOR  
BUREAU OF LAND MANAGEMENT


APPLICATION FOR PERMIT TO DRILL OR DEEPEN

|  |  |  |   |  |  |
|--|--|--|---|--|--|
| 1a. TYPE OF WORK<br>DRILL <input checked="" type="checkbox"/> DEEPEN <input type="checkbox"/>                                    |  |  | 5. LEASE DESIGNATION AND SERIAL NO.<br>NM85865  |  |  |
| b. TYPE OF WELL<br>OIL WELL <input checked="" type="checkbox"/> GAS WELL <input type="checkbox"/> OTHER <input type="checkbox"/> |  |  | 6. IF INDIAN, ALLOTTEE OR TRIBE NAME  |  |  |
| 2. NAME OF OPERATOR<br>Matador Operating Company   |  |  | 7. UNIT AGREEMENT NAME  |  |  |
| 3. ADDRESS AND TELEPHONE NO.<br>415 W. Wall, Ste 1101, Midland, TX 79701, 915-687-5955   |  |  | 8. FARM OR LEASE NAME, WELL NO.<br>Stingray Federal 3 #1  |  |  |
| 4. LOCATION OF WELL (Report location clearly and in accordance with any State requirements.)<br>At surface                       |  |  | 9. API WELL NO.<br>30-015-28755   |  |  |
| 10. FIELD AND POOL, OR WILDCAT<br>Wildcat Welch, Delaware, NE  |  |  | 11. SEC., T., R., M., OR BLK. AND SURVEY OR AREA<br>Sec 3, T26S, R26E   |  |  |
| 12. COUNTY OR PARISH<br>Eddy   |  |  | 13. STATE<br>NM   |  |  |
| 14. DISTANCE IN MILES AND DIRECTION FROM NEAREST TOWN OR POST OFFICE<br>Approximately 10 miles SE of White City, New Mexico      |  |  | 15. DISTANCE FROM PROPOSED* LOCATION TO NEAREST PROPERTY OR LEASE LINE, FT. (Also to nearest drlg. unit line, if any)<br>660' |  |  |
| 16. NO. OF ACRES IN LEASE<br>1680  |  |  | 17. NO. OF ACRES ASSIGNED TO THIS WELL<br>40  |  |  |
| 18. DISTANCE FROM PROPOSED LOCATION* TO NEAREST WELL, DRILLING, COMPLETED, OR APPLIED FOR, ON THIS LEASE, FT.<br>NA              |  |  | 19. PROPOSED DEPTH<br>5600  |  |  |
| 20. ROTARY OR CABLE TOOLS<br>Rotary  |  |  | 21. APPROX. DATE WORK WILL START*<br>ASAP   |  |  |
| 22. ELEVATIONS (Show whether DF, RT, GR, etc.)<br>GR 3404'   |  |  | 23. PROPOSED CASING AND CEMENTING PROGRAM   |  |  |

| SIZE OF HOLE | GRADE, SIZE OF CASING | WEIGHT PER FOOT | SETTING DEPTH | QUANTITY OF CEMENT       |
|--------------|-----------------------|-----------------|---------------|--------------------------|
| 17-1/2       | 13-3/8 H-40           | 48#/54#         | 400'          | 400 sx CIRCULAR          |
| 12-1/4       | 8-5/8 J-55            | 24#/32#         | 1880'         | 700 sx/250 sx [TIE BACK] |
| 7-7/8        | 5-1/2 J-55            | 15.50#          | 5600          | 450 sx/125 sx            |

Drill 17-1/2" hole to 400'. Run and cement 13-3/8", 48#, H-40, ST&C casing. Cement to surface. Nipple up 3000# WP double ram BOP w/ choke manifold (5000# WP) and kill lines. Test same. Drill 12-1/4" hole to ±1880'. Run and cement 8-5/8" 24#, 32# J-55, ST&C casing. Cement to surface. Drill 7-7/8" hole to ±5600' KB. Run and cement 5-1/2", 15.50#, J-55 ST&C casing. Cement into intermediate (8-5/8") string with minimum 500' lap.

IN ABOVE SPACE DESCRIBE PROPOSED PROGRAM: If proposal is to deepen, give data on present productive zone and proposed new productive zone. If proposal is to drill or deepen directionally, give pertinent data on subsurface locations and measured and true vertical depths. Give blowout preventer program, if any.

|  |  |                          |  |                 |  |
|--|--|--------------------------|--|-----------------|--|
| 24. SIGNED    |  | TITLE Operations Manager |  | DATE 11-17-95   |  |
| (This space for Federal or State office use)   |  |                          |  |                 |  |
| PERMIT NO.   |  | APPROVAL DATE            |  |                 |  |
| Application approval does not warrant or certify that the applicant holds legal or equitable title to those rights in the subject lease which would entitle the applicant to conduct operations thereon. |  |                          |  |                 |  |
| CONDITIONS OF APPROVAL, IF ANY:  |  |                          |  |                 |  |
| APPROVED BY  |  | TITLE                    |  | DATE DEC 1 1995 |  |

\*See Instructions On Reverse Side

**DISTRICT I**  
P. O. Box 1980  
Hobbs, NM 88241-1980

State of New Mexico  
Energy, Minerals, and Natural Resources Department

Form C-102  
Revised 02-10-94

Instructions on back

**DISTRICT II**  
P. O. Drawer DD  
Artesia, NM 88211-0719

**DISTRICT III**  
1000 Rio Brazos Rd.  
Aztec, NM 87410

**DISTRICT IV**  
P. O. Box 2088  
Santa Fe, NM 87507-2088

# OIL CONSERVATION DIVISION

P. O. Box 2088  
Santa Fe, New Mexico 87504-2088

Submit to the Appropriate  
District Office  
State Lease - 4 copies  
Fee Lease - 3 copies

☐ AMENDED REPORT

## WELL LOCATION AND ACREAGE DEDICATION PLAT

|                                     |  |   |  |   |                             |
|-------------------------------------|--|---|--|---|-----------------------------|
| 1 API Number<br><b>30-015-28755</b> |  | 2 Pool Code<br><b>96441</b>                         |  | 3 Pool Name<br><b>Wildcat Welch; Delaware, N.E.</b> |                             |
| 4 Property Code                     |  | 5 Property Name<br><b>STINGRAY FEDERAL '3'</b>      |  |   | 6 Well Number<br><b>1</b>   |
| 7 OGRID No.<br><b>014245</b>        |  | 8 Operator Name<br><b>MATADOR OPERATING COMPANY</b> |  |   | 9 Elevation<br><b>3404'</b> |

### 10 SURFACE LOCATION

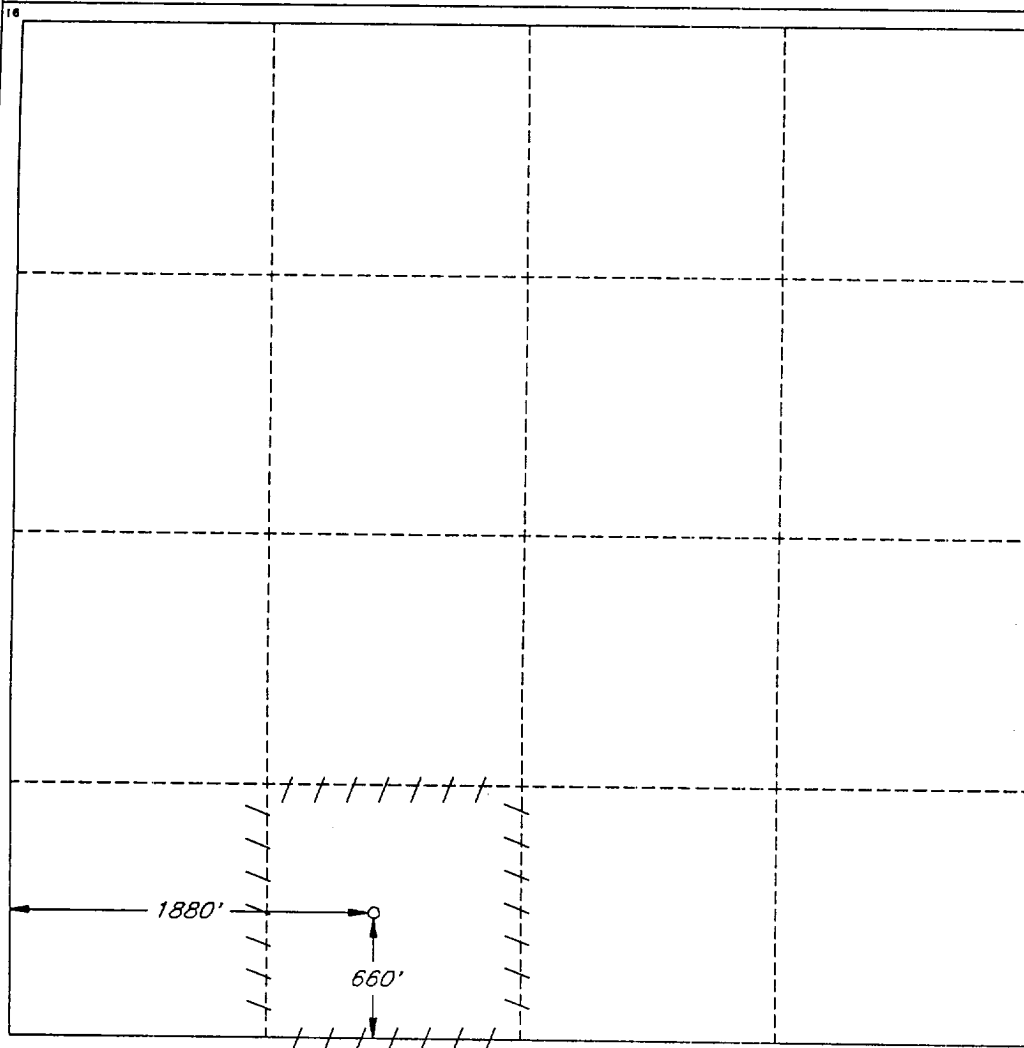
| UL or lot no. | Section | Township | Range             | Lot Ida | Feet from the | North/South line | Feet from the | East/West line | County |
|---------------|---------|----------|-------------------|---------|---------------|------------------|---------------|----------------|--------|
| N             | 3       | 26 SOUTH | 26 EAST, N.M.P.M. |         | 660'          | SOUTH            | 1880'         | WEST           | EDDY   |

### "BOTTOM HOLE LOCATION IF DIFFERENT FROM SURFACE

| UL or lot no. | Section | Township | Range | Lot Ida | Feet from the | North/South line | Feet from the | East/West line | County |
|---------------|---------|----------|-------|---------|---------------|------------------|---------------|----------------|--------|
|               |         |          |       |         |               |                  |               |                |        |

|                                 |                    |                       |              |
|---------------------------------|--------------------|-----------------------|--------------|
| 12 Dedicated Acres<br><b>40</b> | 13 Joint or Infill | 14 Consolidation Code | 15 Order No. |
|---------------------------------|--------------------|-----------------------|--------------|

NO ALLOWABLE WELL BE ASSIGNED TO THIS COMPLETION UNTIL ALL INTERESTS HAVE BEEN CONSOLIDATED OR A NON-STANDARD UNIT HAS BEEN APPROVED BY THE DIVISION



### OPERATOR CERTIFICATION

I hereby certify that the information contained herein is true and complete to the best of my knowledge and belief.

Signature:

Printed Name  
**R. F. Burke**

Title  
**Operations Manager**

Date  
**November 17, 1995**

### SURVEYOR CERTIFICATION

I hereby certify that the well location shown on this plat was plotted from field notes of actual surveys made by me or under my supervision, and that the same is true and correct to the best of my belief.

Date of Survey  
**OCTOBER 24, 1995**

Signature and Seal of Surveyor

Certification No.  
**V. L. BEZNER R.E.S. #7920**

JOB #421207-25 SE / V.H.B.

Exhibit "F"  
PRESSURE CONTROL EQUIPMENT

Stingray Federal 3 #1  
669' FSL; 1880' FWL  
Sec 3-T26S-R26E  
Eddy County, New Mexico

