

NM OIL CONS COMMISSION

Drawer DD

Artesia, NM 88210

SUBMIT IN _____ LICATE*
(Other Instr. _____ on
reverse side)FORM APPROVED
OMB NO. 1004-0136
Expires: February 28, 1995Form 3160-3
(July 1992)UNITED STATES
DEPARTMENT OF THE INTERIOR
BUREAU OF LAND MANAGEMENT

APPLICATION FOR PERMIT TO DRILL OR DEEPEN

1a. TYPE OF WORK

DRILL ☒DEEPEN ☐

b. TYPE OF WELL

OIL
WELL ☒GAS
WELL ☐OTHER ☐SINGLE
ZONE ☒MULTIPLE
ZONE ☐

2. NAME OF OPERATOR

Pogo producing Company 17891 (Richard Wright)

3. ADDRESS AND TELEPHONE NO.

P.O. Box 10340 Midland, Texas 79702 Phone 915-682-6822

4. LOCATION OF WELL (Report location clearly and in accordance with any State requirements.*)

At surface

660' FNL & 1980' FEL SEC. 1 T24S-R31E EDDY CO. NEW MEX.

At proposed prod. zone

Same

Unit B Lot 2

14. DISTANCE IN MILES AND DIRECTION FROM NEAREST TOWN OR POST OFFICE*

Approximately 20 miles East of Loving New Mexico 1210303

15. DISTANCE FROM PROPOSED*

LOCATION TO NEAREST
PROPERTY OR LEASE LINE, FT. 660'

(Also to nearest drlg. unit line, if any)

18. DISTANCE FROM PROPOSED LOCATION*

TO NEAREST WELL, DRILLING, COMPLETED. 2310'

OR APPLIED FOR, ON THIS LEASE, FT.

16. NO. OF ACRES IN LEASE

8500'

17. NO. OF ACRES ASSIGNED
TO THIS WELL

40

19. PROPOSED DEPTH

8500'

20. ROTARY OR CABLE TOOLS

Rotary

21. ELEVATIONS (Show whether DF, RT, GR, etc.)

3517 GR.

22. APPROX. DATE WORK WILL START*

As soon as approved

23.

PROPOSED CASING AND CEMENTING PROGRAM

Secretary's Potash

SIZE OF HOLE	GRADE, SIZE OF CASING	WEIGHT PER FOOT	SETTING DEPTH	QUANTITY OF CEMENT
26"	Conductor	.31 wall Thick.	40'	Cement to surface W/Redi-mix
17 1/2"	J-55 13 3/8"	54.5	600'	500 Sx. Circulate to Surface
11"	J-55 8 5/8"	32 & 24	4300'	1200 Sx. Circulate to Surface
7 7/8"	J-55 & N-80 5 1/2"	17 & 15.5	8500'	1200 Sx. Top Cement 4100'

1. Drill 26" hole to 40'. Set 40' of .31" Wall thickness Pipe cement to surface W/ Redi-mix.
2. Drill 17 1/2" hole to 600'. Run and set 600' of J-55 13 3/8" 54.5# ST&C casing. Cement with 300 Sx. of light, tail in with 200Sx. Class "C" + 2% CaCl circulate cement to surface.
3. Drill 11" hole to 4300'. Run and set 4300' of 8 5/8" ST&C casing as follows: 2100' of 32# J-55, 1200' of 24# J-55, 1000' of 32# J-55. Cement with 1000 Sx. of light, tail in with 200 Sx. Class "C" + 1% CaCl circulate cement to surface.
4. Drill 7 7/8" hole to 8500'. Run and set 8500' of 5 1/2" as follows: 2500' of 5 1/2" N-80 17# LT&C, 5000' of 5 1/2" J-55 15.5# J-55 LT&C, 1000' of 5 1/2" J-55 17# LT&C casing. Cement with 300 Sx. light tail in with 900 Sx. Class "H". Top of cement 4100'. Verify by log or temp. survey.

IN ABOVE SPACE DESCRIBE PROPOSED PROGRAM: If proposal is to deepen, give data on present productive zone and proposed new productive zone. If proposal is to drill or deepen directionally, give pertinent data on subsurface locations and measured and true vertical depths. Give blowout preventer program, if any.

24.

SIGNED

Agent

DATE 11/02/95

(This space for Federal or State police use)

PERMIT NO.

APPROVAL DATE

APPROVAL SUBJECT TO
GENERAL REQUIREMENTS AND
SPECIAL STIPULATIONS
ATTACHED

Application approval does not warrant or certify that the applicant holds legal or equitable title to those rights in the subject lease which would entitle the applicant to conduct operations thereon.

CONDITIONS OF APPROVAL, IF ANY:

APPROVED BY

H. BERNARDO CHAVEZ

TITLE

Acting STATE Director

DATE

2-2-96

*See Instructions On Reverse Side

Title 18 U.S.C. Section 1001, makes it a crime for any person knowingly and willfully to make to any department or agency of the United States any false, fictitious or fraudulent statements or representations as to any matter within its jurisdiction.

DISTRICT I
P.O. Box 1960, Hobbs, NM 88241-1960

DISTRICT II
P.O. Drawer DD, Artesia, NM 88211-0719

DISTRICT III
1000 Rio Brazos Rd., Aztec, NM 87410

DISTRICT IV
P.O. BOX 2088, SANTA FE, N.M. 87504-2088

State of New Mexico
Energy, Minerals and Natural Resources Department

Form C-102
Revised February 10, 1994
Submit to Appropriate District Office
State Lease - 4 Copies
Fee Lease - 3 Copies

OIL CONSERVATION DIVISION

P.O. Box 2088
Santa Fe, New Mexico 87504-2088

☐ AMENDED REPORT

WELL LOCATION AND ACREAGE DEDICATION PLAT

API Number 30-015-28824	Pool Code 96191	Pool Name MESA VERDE ; INGLE WELLS DELAWARE
Property Code	Property Name SUNDANCE "1" FED.	Well Number 5
OGRID No. 17891	Operator Name POGO PRODUCING CO.	Elevation 3517

Surface Location

UL or lot No.	Section	Township	Range	Lot Idn	Feet from the	North/South line	Feet from the	East/West line	County
LOT 2	1	24 S	31 E		660	NORTH	1980	EAST	EDDY

Bottom Hole Location If Different From Surface

UL or lot No.	Section	Township	Range	Lot Idn	Feet from the	North/South line	Feet from the	East/West line	County

Dedicated Acres 40	Joint or Infill	Consolidation Code	Order No.
-----------------------	-----------------	--------------------	-----------

NO ALLOWABLE WILL BE ASSIGNED TO THIS COMPLETION UNTIL ALL INTERESTS HAVE BEEN CONSOLIDATED
OR A NON-STANDARD UNIT HAS BEEN APPROVED BY THE DIVISION

LOT 4 39.95 ACRES	LOT 3 39.96 ACRES	LOT 2 39.98 ACRES SEE DETAIL DETAIL	LOT 1 39.99 ACRES
OPERATOR CERTIFICATION <i>I hereby certify the the information contained herein is true and complete to the best of my knowledge and belief.</i> Signature Richard L. Wright Printed Name Division Operations Mgr. Title 11/02/95 Date			
SURVEYOR CERTIFICATION <i>I hereby certify that the well location shown on this plat was plotted from field notes of actual surveys made by me or under my supervision, and that the same is true and correct to the best of my belief.</i> SEPT. 12, 1995 Date Surveyed Signature & Seal Professional Surveyor DMCC Certificate No. JOHN P. EIDSON 676 PROFESSIONAL SURVEYOR 3239 EIDSON 12641			

EXHIBIT "A"

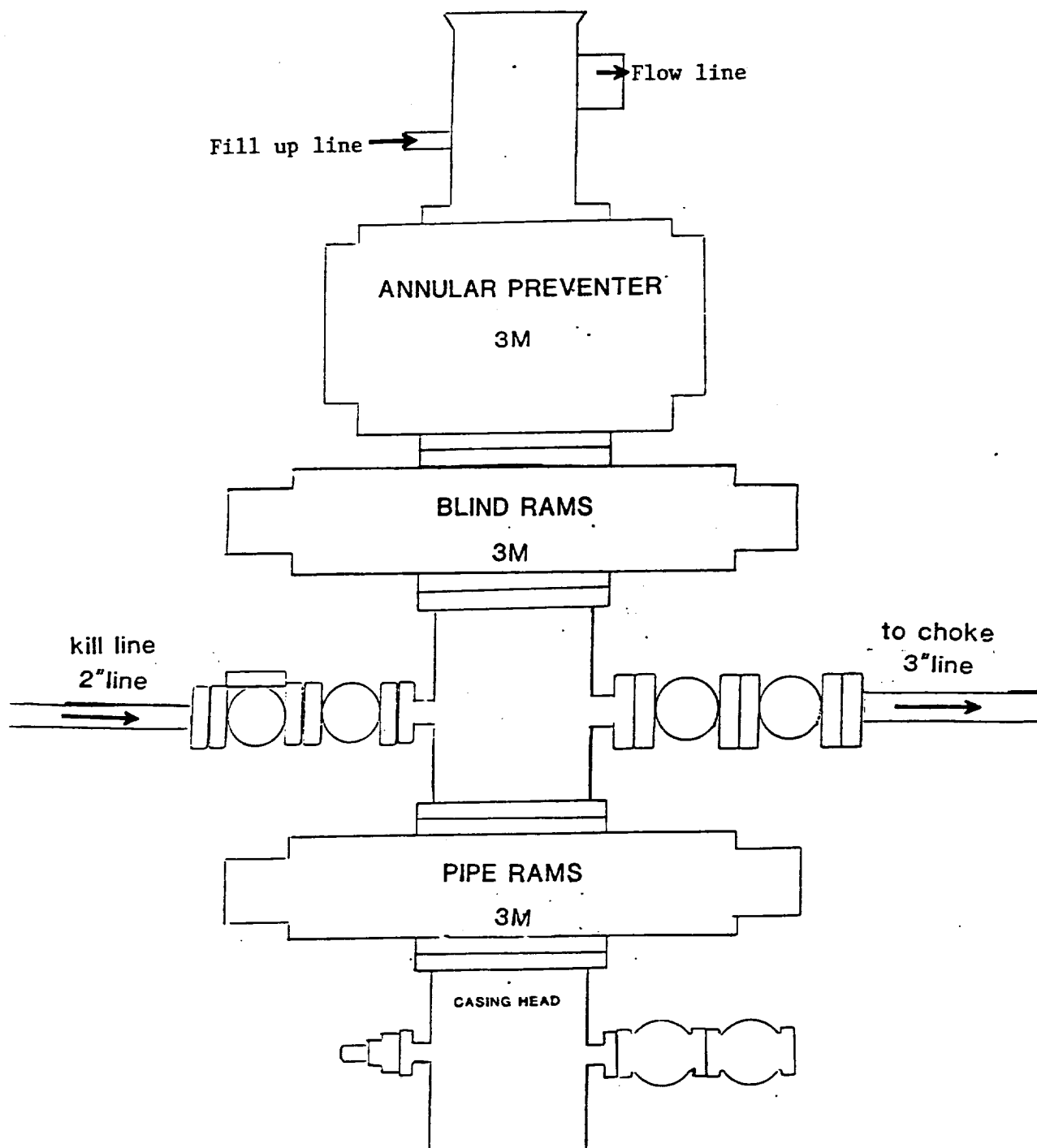
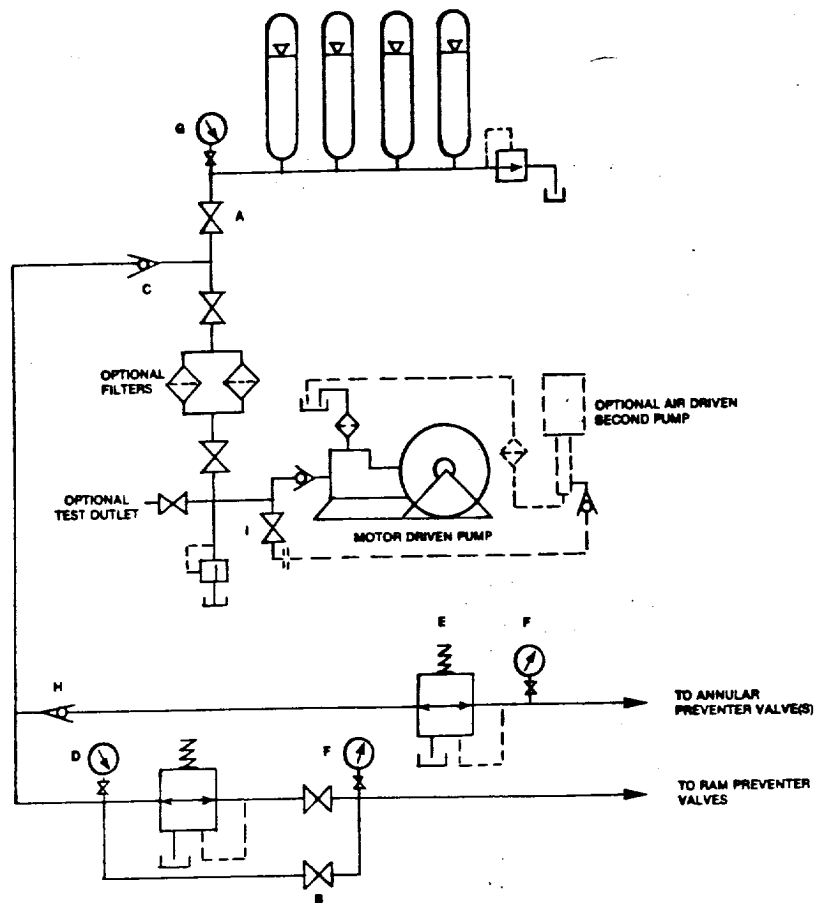


EXHIBIT "E"
 B.O.P. SKETCH TO BE USED ON
 POGO PRODUCING COMPANY
 SUNDANCE "1" FEDERAL #5
 660' FNL & 1980' FEL SEC. 1
 T24S-R31E LEA CO. NM



HAND AJUSTABLE CHOKE

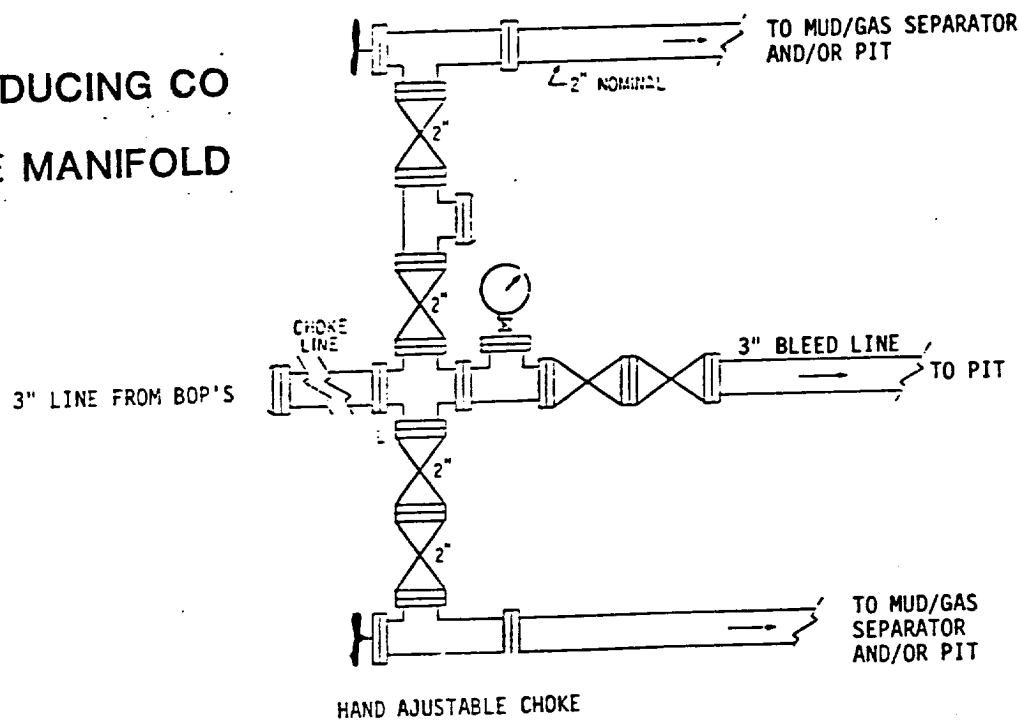


EXHIBIT "1-E"
 CHOKE MANIFOLD & CLOSING UNIT
 POGO PRODUCING COMPANY
 SUNDANCE "1" FEDERAL #5
 660' FNL & 1980' FEL SEC. 1
 T24S-R31E LEA CO. NM

POGO PRODUCING CO
 3M CHOKE MANIFOLD