

District I  
PO Box 1980, Hobbs, NM 88241-1980  
District II  
PO Drawer DD, Artesia, NM 88211-0719  
District III  
1000 Rio Brazos Rd., Aztec, NM 87410  
District IV  
PO Box 2088, Santa Fe, NM 87504-2088

State of New Mexico  
Energy, Minerals & Natural Resources Department

OIL CONSERVATION DIVISION  
PO Box 2088  
Santa Fe, NM 87504-2088

Form C-101  
Revised February 10, 1994  
Instructions on back  
Submit to Appropriate District Office  
State Lease - 6 Copies  
Fee Lease - 5 Copies

☐ AMENDED REPORT

APPLICATION FOR PERMIT TO DRILL, RE-ENTER, DEEPEN, PLUGBACK, OR ADD A ZONE

|  |  |                            |
|--|--|----------------------------|
| Operator Name and Address.<br>Santa Fe Energy Resources, Inc.<br>550 W. Texas, Suite 1330<br>Midland, TX 79701 |  | OGRID Number<br>20305      |
| Property Name<br>Corral Fly Unit   |  | API Number<br>30-015-28829 |
| Property Code<br>17409   |  | Well No.<br>4              |

| Surface Location |         |          |       |         |               |                  |               |                |        |
|------------------|---------|----------|-------|---------|---------------|------------------|---------------|----------------|--------|
| UL or lot no.    | Section | Township | Range | Lot Idn | Feet from the | North/South line | Feet from the | East/West line | County |
| K                | 2       | 25-S     | 29E   |         | 1980'         | South            | 2130'         | West           | Eddy   |

| Proposed Bottom Hole Location If Different From Surface |         |          |       |         |                          |                  |               |                |        |
|---|---------|----------|-------|---------|--------------------------|------------------|---------------|----------------|--------|
| UL or lot no.   | Section | Township | Range | Lot Idn | Feet from the            | North/South line | Feet from the | East/West line | County |
| Proposed Pool 1<br>Wildcat Owen Mesa; Bone Spring       |         |          |       |         | Proposed Pool 2<br>96427 |                  |               |                |        |

|                     |                        |                          |                                |                                |
|---------------------|------------------------|--------------------------|--------------------------------|--------------------------------|
| Work Type Code<br>N | Well Type Code<br>O    | Cable/Rotary<br>R        | Lease Type Code<br>S           | Ground Level Elevation<br>3034 |
| Multiple<br>No      | Proposed Depth<br>8500 | Formation<br>Bone Spring | Contractor<br>To be determined | Spud Date<br>3-25-96           |

| Proposed Casing and Cement Program |             |                    |               |                 |               |
|------------------------------------|-------------|--------------------|---------------|-----------------|---------------|
| Hole Size                          | Casing Size | Casing weight/foot | Setting Depth | Sacks of Cement | Estimated TOC |
| 17 1/2"                            | 13 3/8"     | 48.0               | 650'          | 650             | surface       |
| 11"                                | 8 5/8"      | 32.0               | 3200'         | 950             | surface       |
| 7 7/8"                             | 5 1/2"      | 17.0               | 8500'         | 500             | 6000'         |
|                                    |             |                    |               |                 |               |
|                                    |             |                    |               |                 |               |

Describe the proposed program. If this application is to DEEPEN or PLUG BACK give the data on the present productive zone and proposed new productive zone. Describe the blowout prevention program, if any. Use additional sheets if necessary.

12  
Rig up rotary tools. Set 13 3/8" casing @ 650', WOC 12 hrs, NU annular preventor and test casing to 600 psi. Set 8 5/8" casing @ 3200', WOC 12 hrs, and NU 3M double ram BOP w/annular. Test casing to 1500 psi. Drill to a TD of  $\pm 8500'$ .

Post ID-1  
2-23-96  
New Line & API

|  |  |                       |  |   |  |
|--|--|-----------------------|--|---|--|
| I hereby certify that the information given above is true and complete to the best of my knowledge and belief.<br>Signature: James P. Stinson<br>Printed name: James P. Stinson<br>Title: Agent for Santa Fe Energy<br>Date: 2.19.96 |  | Phone: (915) 682-6373 |  | OIL CONSERVATION DIVISION<br>Approved by: ORIGINAL SIGNED BY TIM W. GUM<br>Title: DISTRICT II SUPERVISOR<br>Approval Date: 2-22-96<br>Expiration Date: 8-22-96<br>Conditions of Approval: Attached <input type="checkbox"/><br>Posted ID-1<br>9-27-96 |  |
|--|--|-----------------------|--|---|--|

P. O. Box 1980  
Hobbs, NM 88241-1980

State of New Mexico  
Energy, Minerals, and Natural Resources Department

Form C-102  
Revised 02-10-94

Instructions on back

Submit to the Appropriate  
District Office  
State Lease - 4 copies  
Fee Lease - 3 copies

**OIL CONSERVATION DIVISION**  
P. O. Box 2088  
Santa Fe, New Mexico 87504-2088

☐ AMENDED REPORT

**DISTRICT II**

P. O. Drawer DD  
Artesia, NM 88211-0719

**DISTRICT III**

1000 Rio Brazos Rd.  
Aztec, NM 87410

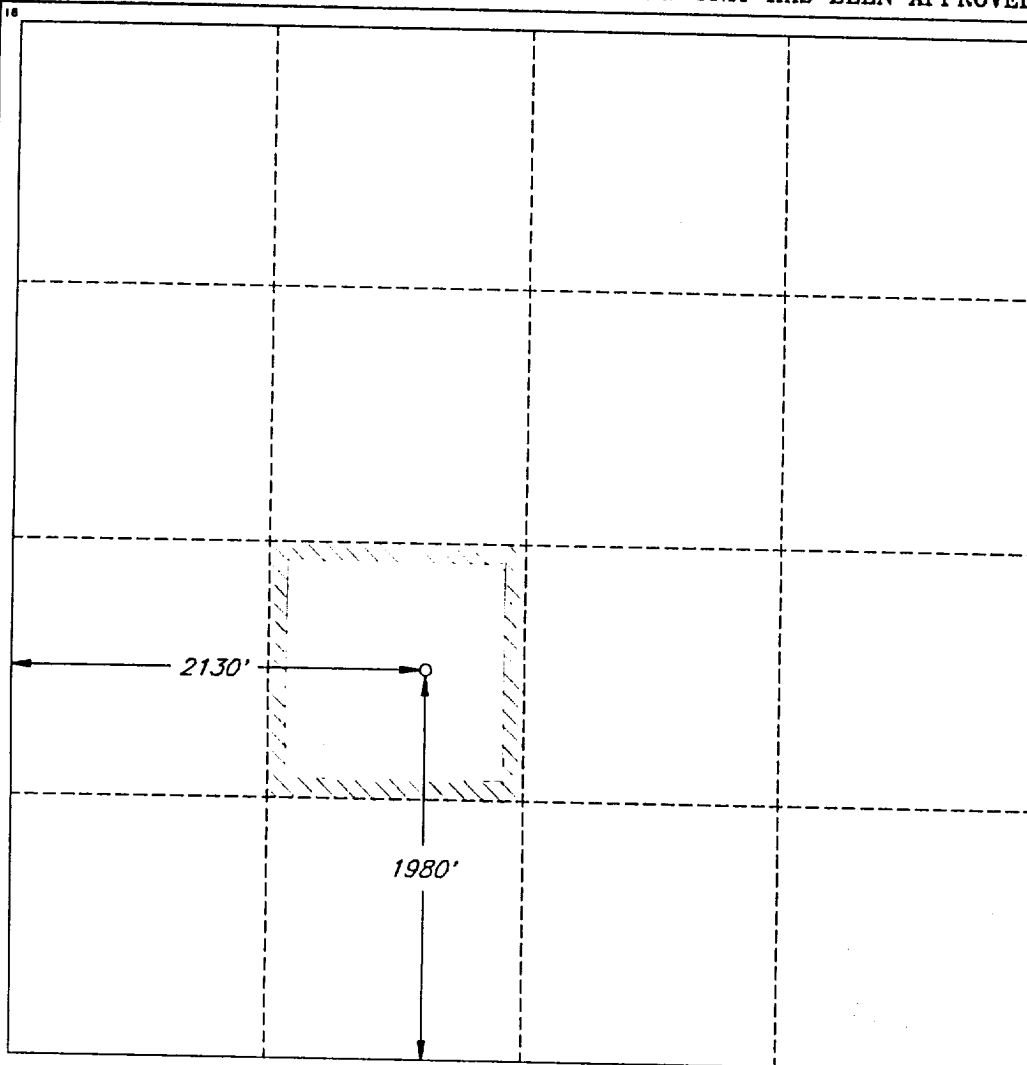
**DISTRICT IV**

P. O. Box 2088  
Santa Fe, NM 87507-2088

**WELL LOCATION AND ACREAGE DEDICATION PLAT**

|  |                     |   |                                   |   |                               |                                  |                               |                               |                       |
|--|---------------------|---|-----------------------------------|---|-------------------------------|----------------------------------|-------------------------------|-------------------------------|-----------------------|
| 1 API Number<br><b>30-015-28829</b>              |                     | 2 Pool Code<br><b>96427</b>                               |                                   | 3 Pool Name <b>WILDCAT</b><br>Owen Mesa Bone Spring |                               |                                  |                               |                               |                       |
| 4 Property Code                                  |                     | 5 Property Name<br><b>CORRAL FLY UNIT</b>                 |                                   |   |                               |                                  |                               | 6 Well Number<br><b>4</b>     |                       |
| 7 OGRID No.                                      |                     | 8 Operator Name<br><b>SANTA FE ENERGY RESOURCES, INC.</b> |                                   |   |                               |                                  |                               | 9 Elevation<br><b>3034'</b>   |                       |
| 10 SURFACE LOCATION                              |                     |   |                                   |   |                               |                                  |                               |                               |                       |
| UL or lot no.<br><b>K</b>                        | Section<br><b>2</b> | Township<br><b>25 SOUTH</b>                               | Range<br><b>29 EAST, N.M.P.M.</b> | Lot Ida   | Feet from the<br><b>1980'</b> | North/South line<br><b>SOUTH</b> | Feet from the<br><b>2130'</b> | East/West line<br><b>WEST</b> | County<br><b>EDDY</b> |
| "BOTTOM HOLE LOCATION IF DIFFERENT FROM SURFACE" |                     |   |                                   |   |                               |                                  |                               |                               |                       |
| UL or lot no.                                    | Section             | Township  | Range                             | Lot Ida   | Feet from the                 | North/South line                 | Feet from the                 | East/West line                | County                |
| 12 Dedicated Acres<br><b>40</b>                  |                     | 13 Joint or Infill  |                                   | 14 Consolidation Code                               |                               | 15 Order No.                     |                               |                               |                       |

NO ALLOWABLE WELL BE ASSIGNED TO THIS COMPLETION UNTIL ALL INTERESTS HAVE BEEN  
CONSOLIDATED OR A NON-STANDARD UNIT HAS BEEN APPROVED BY THE DIVISION



**OPERATOR CERTIFICATION**

I hereby certify that the information  
contained herein is true and complete  
to the best of my knowledge and belief.

Signature *James P. "Phil" Stinson*  
Printed Name

James P. "Phil" Stinson  
Title  
Agent for Santa Fe Energy

Date  
**2-19-96**

**SURVEYOR CERTIFICATION**

I hereby certify that the well  
location shown on this plat was  
plotted from field notes of actual  
surveys made by me or under  
my supervision, and that the  
same is true and correct to the  
best of my belief.

Date of Survey  
**JANUARY 23 1996**

Signature and Seal  
Professional Surveyor  
  
Certified  
V. L. BEZNER LAND SURVEYOR R.E.S. #7920

JOB #43440-2 / 23 NW / V.H.B.