

FIGURE K6-1. The schematic sketch of an accumulator system shows required and optional components.

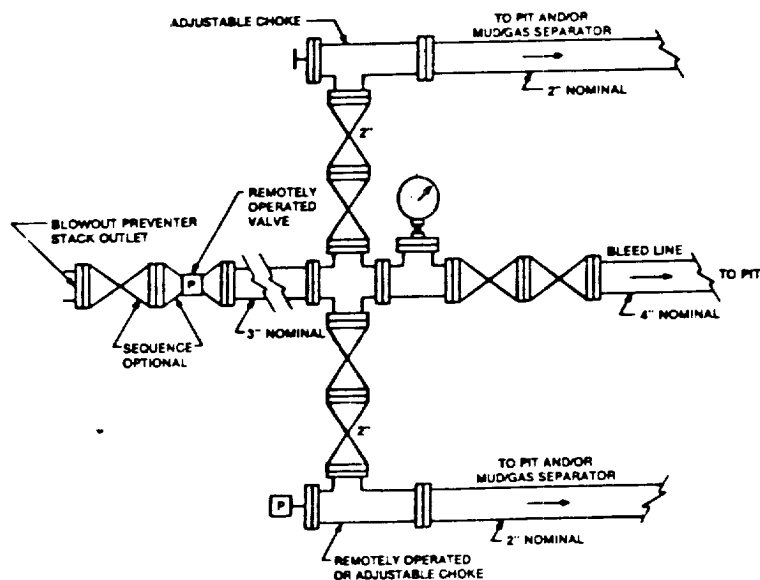


FIGURE K4-2. Typical choke manifold assembly for 5M rated working pressure service — surface installation.

EXHIBIT "E-1"
CHOKE MANIFOLD & CLOSING UNIT
BURNS OPERATING COMPANY
BURNETT "1" FEDERAL # 1
1800' FSL & 330' FEL SEC. 1
T17S-R30E EDDY CO. NM