

OIL CONSERVATION DIV.  
UNITED STATES  
DEPARTMENT OF THE INTERIOR  
ARTESIA, NM 88210-2834  
BUREAU OF LAND MANAGEMENT

APPLICATION FOR PERMIT TO DRILL OR DEEPEN

1a. TYPE OF WORK

DRILL ☒

DEEPEN ☐

b. TYPE OF WELL

OIL WELL ☒

GAS WELL ☐

OTHER ☐

SINGLE ZONE ☐

MULTIPLE ZONE ☐

2. NAME OF OPERATOR

Read & Stevens, Inc.

505/622-3770

3. ADDRESS AND TELEPHONE NO.

P. O. Box 1518

Roswell, NM 88202

4. LOCATION OF WELL (Report location clearly and in accordance with any State requirements.)\*  
At surface

1980' FNL & 2310' FWL

At proposed prod. zone

Same

UNIT F

14. DISTANCE IN MILES AND DIRECTION FROM NEAREST TOWN OR POST OFFICE\*

9 miles east of Carlsbad, NM

15. DISTANCE FROM PROPOSED\* LOCATION TO NEAREST PROPERTY OR LEASE LINE, FT.

1980'

16. NO. OF ACRES IN LEASE

2,360

17. NO. OF ACRES ASSIGNED TO THIS WELL

40

18. DISTANCE FROM PROPOSED LOCATION\* TO NEAREST WELL, DRILLING, COMPLETED, OR APPLIED FOR, ON THIS LEASE, FT.

2660.5'

19. PROPOSED DEPTH

6,100'

20. ROTARY OR CABLE TOOLS

Rotary

21. ELEVATIONS (Show whether DF, RT, GR, etc.)

3192' GL

22. APPROX. DATE WORK WILL START\*

April 15, 1996

23. PROPOSED CASING AND CEMENTING PROGRAM

SIZE OF HOLE	GRADE, SIZE OF CASING	WEIGHT PER FOOT	SETTING DEPTH	QUANTITY OF CEMENT
17 1/2"	13 3/8" J-55	54.5#	400'	Circ. 425 sx "C" to surf.
11"	8 5/8" J-55	24.0#	2200'	See Below
11"	8 5/8" J-55	32.0#	2500'	Tieback 300 sx lite + 200
7 7/8"	5 1/2" J-55	15.5#	6100'	Tieback w/680 sx "H"

MUD PROGRAM:

0' - 400': Fr/Wtr w/gel & lm:  
400' - 2500': Brine mud:  
2500' - 6100': Cut brine mud:

MUD WT.

8.7- 8.9 ppg  
10.0-10.2 ppg  
8.7- 9.2 ppg

VIS.

34-36  
28  
32-34

W/L Control

No W/L control.  
No W/L control.  
W/L cont. 10cc

OIL CON. DIV.

DIST. 2

BOP PROGRAM:

A 10" 3000 psi wp Schaffer Type E double hydraulic BOP will be installed on the 8 5/8" casing. Casing and BOP will be tested before drilling out with 7 7/8". The BOP will be used as a 2000 psi wp system and will be tested daily.

IN ABOVE SPACE DESCRIBE PROPOSED PROGRAM: If proposal is to deepen, give data on present productive zone and proposed new productive zone. If proposal is to drill or deepen directionally, give pertinent data on subsurface locations and measured and true vertical depths. Give blowout preventer program, if any.

24.

SIGNED

Agent for:

Read & Stevens, Inc.

Feb. 12, 1996

DATE

(This space for Federal or State office use)

PERMIT NO.

APPROVAL DATE

Application approval does not warrant or certify that the applicant holds legal or equitable title to those rights in the subject lease which would entitle the applicant to conduct operations thereon.  
CONDITIONS OF APPROVAL, IF ANY:

APPROVAL SUBJECT TO  
GENERAL REQUIREMENTS AND  
SPECIAL STIPULATIONS  
ATTACHED

APPROVED BY

/s/ Gary Bowers

TITLE

Acting AREA MANAGER

DATE

APR - 9 1996

\*See Instructions On Reverse Side

District I  
PO Box 1980, Hobbs, NM 88241-1980  
District II  
PO Drawer DD, Artesia, NM 88211-0719  
District III  
1000 Rio Brazos Rd., Aztec, NM 87410  
District IV  
PO Box 2088, Santa Fe, NM 87504-2088

State of New Mexico  
Energy, Minerals & Natural Resources Department

OIL CONSERVATION DIVISION  
PO Box 2088  
Santa Fe, NM 87504-2088

Form C-102  
Revised February 10, 1994  
Instructions on back  
Submit to Appropriate District Office  
State Lease - 4 Copies  
Fee Lease - 3 Copies

☐ AMENDED REPORT

WELL LOCATION AND ACREAGE DEDICATION PLAT

API Number 30-015-28937		Pool Code 24320		UNDES. Fenton-Delaware		Pool Name	
Property Code		Property Name NIX FEDERAL				Well Number 6	
OGRID No.		Operator Name READ & STEVENS, INC.				Elevation 3192.	

<sup>10</sup> Surface Location

UL or lot no.	Section	Township	Range	Lot Idn	Feet from the	North/South line	Feet from the	East/West line	County
F	28	21-S	28-E		1980	NORTH	2310	WEST	EDDY

<sup>11</sup> Bottom Hole Location If Different From Surface

UL or lot no.	Section	Township	Range	Lot Idn	Feet from the	North/South line	Feet from the	East/West line	County
<sup>12</sup> Dedicated Acres 40		<sup>13</sup> Joint or Infill		<sup>14</sup> Consolidation Code		<sup>15</sup> Order No.			

NO ALLOWABLE WILL BE ASSIGNED TO THIS COMPLETION UNTIL ALL INTERESTS HAVE BEEN CONSOLIDATED  
OR A NON-STANDARD UNIT HAS BEEN APPROVED BY THE DIVISION

<sup>16</sup> NM-0486 Bass, Inc., et al						<sup>17</sup> OPERATOR CERTIFICATION I hereby certify that the information contained herein is true and complete to the best of my knowledge and belief  <i>George R. Smith</i> Signature George R. Smith, agent for: Printed Name Read & Stevens, Inc. Title February 12, 1996 Date
						<sup>18</sup> SURVEYOR CERTIFICATION I hereby certify that the well location shown on this plat was plotted from field notes of actual surveys made by me or under my supervision, and that the same is true and correct to the best of my belief.  JANUARY 11 1996 Date of Survey NEW MEXICO Signature and Seal of Professional Surveyor: 5412 REGISTERED LAND SURVEYOR PROFESSIONAL ENGINEER Certificate Number NM PE&PS No. 5412



KEN REYNOLDS—PRESIDENT  
ARNIE NEWKIRK—VICE-PRESIDENT

DRILLING CO., INC. — OIL WELL DRILLING CONTRACTORS

P. O. BOX 1498 ROSWELL, NEW MEXICO 88202-1498  
808/623-8070 808/746-3719  
ROSWELL, NM ARTERIA, NM

RIG #3

BLOWOUT PREVENTOR ARRANGEMENT

2M SYSTEM

10" SHAFFER TYPE "E", 3000 psi WP

80 GALLON, 4 STATION KOOMEY ACCUMULATOR

3000 psi WP CHOKE MANIFOLD

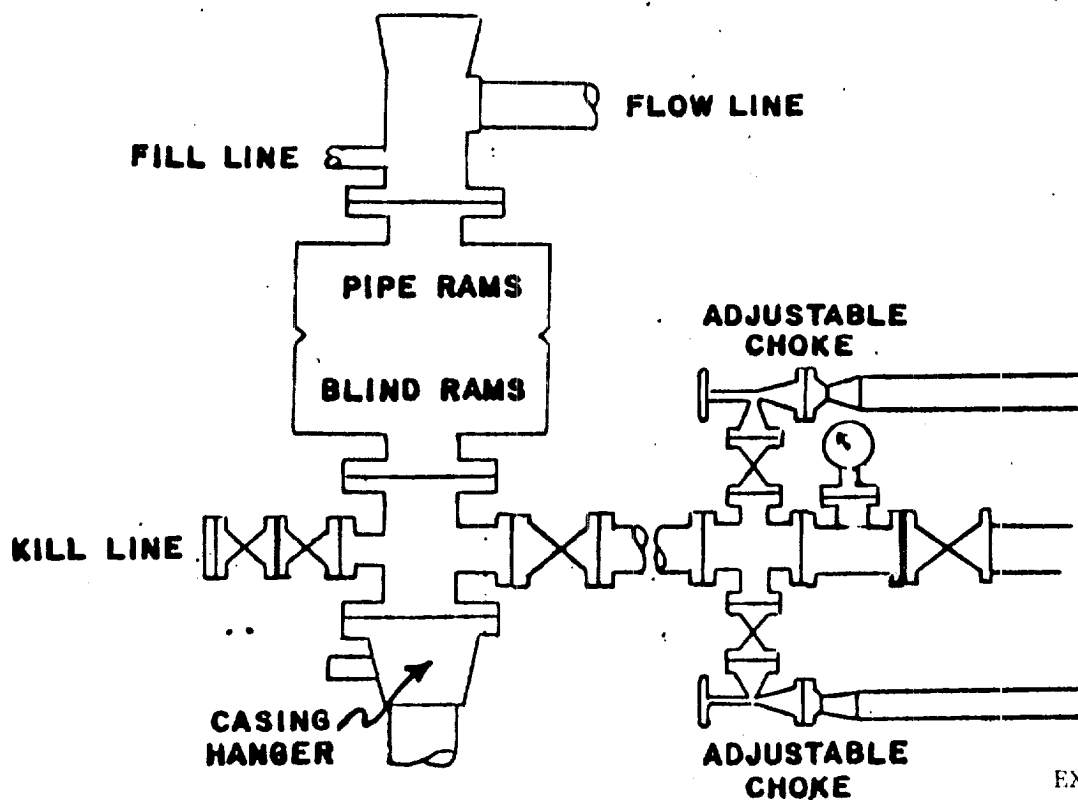


EXHIBIT "E"  
READ & STEVENS, INC.  
Nix Federal, Well No. 6  
BOP Specifications