

UNITED STATES
DEPARTMENT OF THE INTERIOR
BUREAU OF LAND MANAGEMENT

Submit in Triplicate*

OIL CONSERVATION DIV
811 S. 1st S.
ARTESIA, NM 88210-2834

FORM APPROVED
Budget Bureau No. 1004-1036
Expires: December 31, 1991

APPLICATION FOR PERMIT TO DRILL OR DEEPEN

1a. Type of Work

DRILL ☒

DEEPEN ☐

b. Type of Well

☒ Oil

☐ Gas

☐ Other

Single Zone ☐

2. Name of Operator

Merit Energy Company

3. Address and Telephone No.

3532 Andrews Hwy, Suite 113 Midland, TX 79703 (915) 520-4345

4. Location of Well (Report location clearly and in accordance with any State requirements.)

At Surface: Unit Letter P - Sec 4, T24S R31E

660' FSL and 660' FEL - Eddy County, NM

At proposed prod. zone:

Same as above

14. Distance in miles and direction from nearest Town or Post Office*

21 miles East of Loving, NM

15. Distance from proposed* location to nearest property or lease line, Ft.
(Also to nearest drig unit line, if any)

660' to the South

16. No. of acres in lease

1682.12

17. No. of acres assigned to this well

40(forty)

18. Distance from proposed location* to nearest well drilling, completed, or applied for, on this lease, ft

1320' to the East

19. Proposed Depth

8200'

20. Rotary or Cable Tools

Rotary

21. Elevations (Show whether DF, RT, GR, ect.)

3427 GR

R-111-P Potash

22. Approx date work will start*
ASAP

23.

PROPOSED CASING AND CEMENTING PROGRAM

Size of Hole	Grade, Size of Casing	Weight Per Foot	Setting Depth	Quantity of Cement
17 1/2	13 3/8	54.5	650	550sx (Circ)
12 1/4	8 5/8	24 & 32#	4200	921sx (Circ)
7 7/8	5 1/2	15.5 & 17#	8200	783sx(tie back)

Merit Energy Company proposes to drill and test the Delaware & intermediate formations. Approx. 650' surface casing will be set & circulated to surface. Approx. 4200' of intermediate casing will be set & circulated to surface. If well is commercial, production casing will be ran & cemented tying back into 8 5/8 intermediate casing, perforated & stimulated as needed for production.

Mud Program FW to 650', cut Brine to 4200', cut brine to 8200'.

BOPE Program: BOPE will be installed at the offset and tested daily for operational condition.

APPROVAL OF SPECIAL REQUIREMENTS AND SPECIAL STIPULATIONS ATTACHED

IN ABOVE SPACE DESCRIBE PROPOSED PROGRAM: If proposal is to deepen, give data on present productive zone and proposed new productive zone. If proposal is to drill or deepen directionally, give pertinent data on subsurface locations and measured and true vertical depths. Give blowout preventer program, if any.

24.

Signed

Russell White

Title West District, Operations Supt

Date 10-Jun-96

(This space for Federal or State office use)

Permit No.

Approval Date

Application approval does not warrant or certify that the applicant hold legal or equitable title to those rights in the subject lease which would entitle the applicant to conduct operations thereon.

Conditions of approval, if any:

Approved by

Gilbert J. Lucero

Title

Acting State Director

Date

10 Jun 1996

*See Instruction of Reverse Side

Title 18 U.S.C., Section 1001, makes it a crime for any person knowingly and willfully to make to any department or agency of the United States any false, fictitious or fraudulent statements or representations as to any matter within its jurisdiction.

DISTRICT II
P.O. Drawer DD, Artesia, NM 88210

DISTRICT III
1000 Rio Brazos Rd., Aztec, NM 87410

DISTRICT IV
PO BOX 2088, SANTA FE, NM 87504-2088

OIL CONSERVATION DIVISION

P.O. Box 2088
Santa Fe, New Mexico 87504-2088

☐ AMENDED REPORT

WELL LOCATION AND ACREAGE DEDICATION PLAT

API Number 30-015-29119	Pool Code S3815	Pool Name SAND UNRS WEST
Property Code	Property Name SUNDANCE FEDERAL	Well Number 20
OGRID No.	Operator Name MERIT ENERGY COMPANY	Elevation 3427

Surface Location

UL or lot No.	Section	Township	Range	Lot Idn	Feet from the	North/South line	Feet from the	East/West line	County
P	4	24 S	31 E		660	SOUTH	660	EAST	EDDY

Bottom Hole Location If Different From Surface

UL or lot No.	Section	Township	Range	Lot Idn	Feet from the	North/South line	Feet from the	East/West line	County
Dedicated Acres 40	Joint or Infill	Consolidation Code		Order No.					

NO ALLOWABLE WILL BE ASSIGNED TO THIS COMPLETION UNTIL ALL INTERESTS HAVE BEEN CONSOLIDATED
OR A NON-STANDARD UNIT HAS BEEN APPROVED BY THE DIVISION

LOT 4 40.29 AC.	LOT 3 40.27 AC.	LOT 2 40.25 AC.	LOT 1 40.23 AC.

OPERATOR CERTIFICATION

I hereby certify the the information contained herein is true and complete to the best of my knowledge and belief.

Signature

Russell White
 Printed Name

Operations Supt
 Title

6-10-96
 Date

SURVEYOR CERTIFICATION

I hereby certify that the well location shown on this plat was plotted from field notes of actual surveys made by me or under my supervision, and that the same is true and correct to the best of my belief.

MAY 4, 1995

Date Surveyed SJA

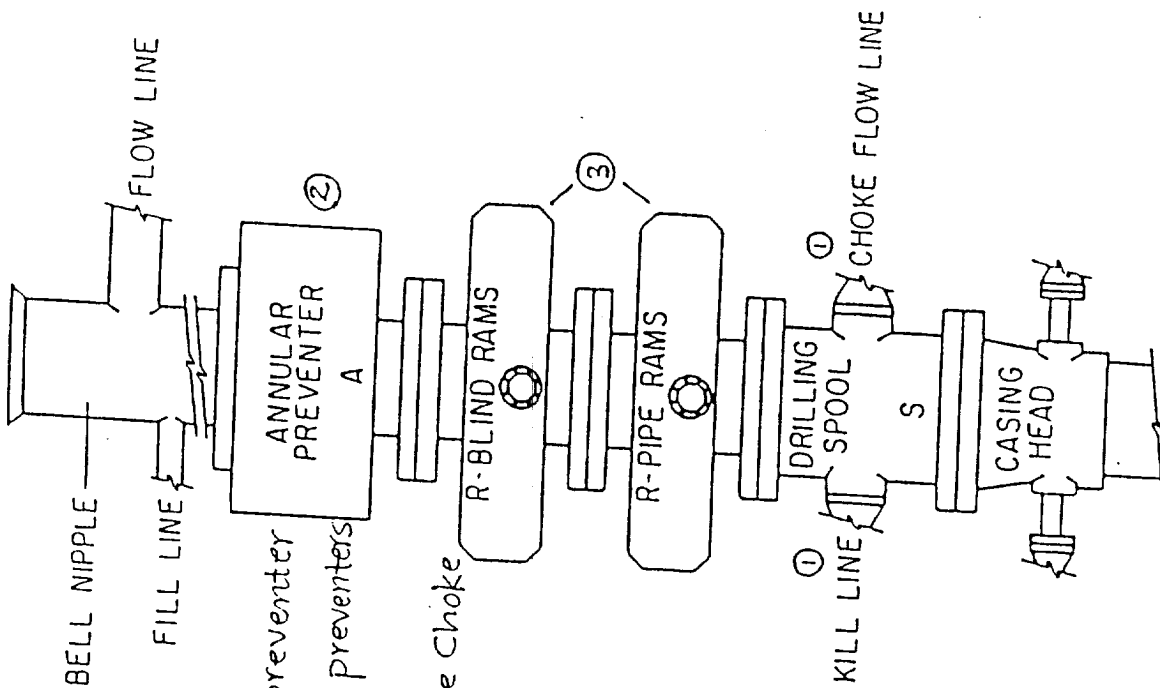
Signature & Seal of
 Professional Surveyor

W.O. Num. 95-11-0699

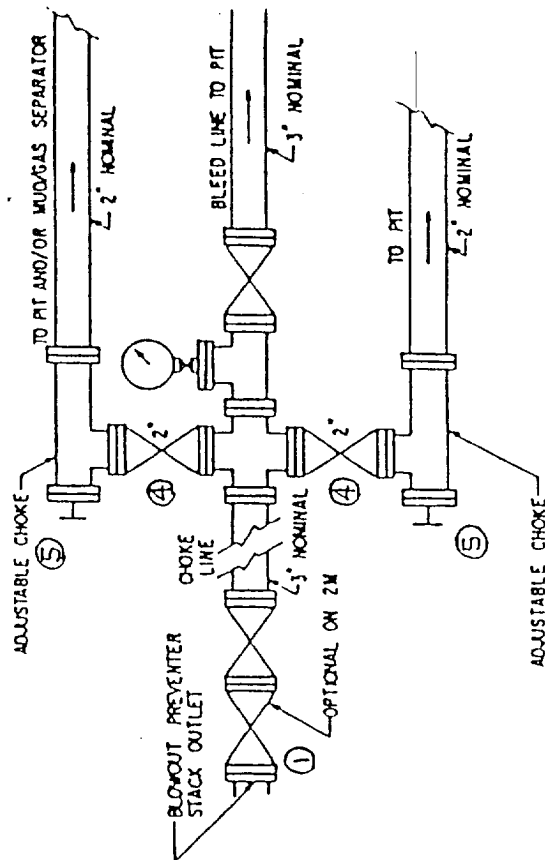
Certificate No.	JOHN W. WEST	676
	RONALD J. EIDSON	3239
	GARY EIDSON	12641

Exhibit B

4
B-1



- ① 3" Series 900 Valve
- ② Series 900 Annular preventer
- ③ Series 900 Ram-Type preventers
- ④ 2" series 900 valve
- ⑤ 2" Series 900 Adjustable Choke



3000 PSI
Working Pressure
(Series 900 Flanges)