

(December 1990)

UNITED STATES
DEPARTMENT OF THE INTERIOR
BUREAU OF LAND MANAGEMENT

Submit in triplicate*
OIL CONSERVATION DIV
811 S. 16th ST.
ARTESIA, NM 88202

FORM APPROVED
Budget Bureau No. 1004-1036
Expires: December 31, 1991

APPLICATION FOR PERMIT TO DRILL OR DEEPEN

1a. Type of Work

DRILL ☒ DEEPEN ☐

b. Type of Well

☒ Oil Well ☐ Gas Well ☐ Other ☐ Single Zone ☐ Multiple Zone ☐

2. Name of Operator

Merit Energy Company 14591

3. Address and Telephone No.

3525 Andrews Highway Suite #113 Midland Tx 79703 (915)520-4345

4. Location of Well (Report location clearly and in accordance with any State requirements.)*

At Surface: Unit letter M
330' FWL and 660' FSL - Eddy County, NM

At proposed prod. zone:

Same as above

14. Distance in miles and direction from nearest Town or Post Office*

4 miles west of Carlsbad, NM

15. Distance from proposed* location to nearest property or lease line, Ft.
(Also to nearest drilg unit line, if any)

330' FWL

16. No. of acres in lease

320

17. No. of acres assigned to this well

40(forty)

18. Distance from proposed location* to nearest well drilling, completed, or applied for, on this lease, ft

990'

19. Proposed Depth

5100'

20. Rotary or Cable Tools

Rotary

21. Elevations (Show whether DF, RT, GR, ect.)

3306 GR

22. Approx date work will start*

ASAP

23.

PROPOSED CASING AND CEMENTING PROGRAM

Size of Hole	Grade, Size of Casing	Weight Per Foot	Setting Depth	Quantity of Cement
17 1/2"	13 5/8" 13	3/8" 54.50	650	570sx Class C (Circ)
12 1/4"	12 1/4" 8	5/8" 24	1750	343sx Class C(Circ)
7 7/8"	5 1/2"	15.5	5100	556sx Class H(tie back)

Merit Energy Company proposes to drill and test the Delaware & intermediate formations. Approx. 650' surface casing will be set & cemented to surface.

Mud Program FW' to 5100',

BOPE Program: BOPE will be installed at the offset and tested daily for operational condition.

IN ABOVE SPACE DESCRIBE PROPOSED PROGRAM: If proposal is to deepen, give data on present productive zone and proposed new productive zone. If proposal is to drill or deepen directionally, give pertinent data on subsurface locations and measured and true vertical depths. Give blowout preventer program, if any.

24.

Signed

Russell M. H. T.

Title West District, Operations Supt

Date

30-May-96

(This space for Federal or State office use)

Permit No.

Approval Date

Application approval does not warrant or certify that the applicant hold legal or equitable title to those rights in the subject lease which would entitle the applicant to conduct operations thereon.

Conditions of approval, if any:

(ORIG. SGD.) RICHARD L. MANUS

Title

Area Manager

Date

AUG 27 1996

*See Instruction of Reverse Side

Title 18 U.S.C., Section 1001, makes it a crime for any person knowingly and willfully to make to any department or agency of the United States any false, fictitious or fraudulent statements or representations as to any matter within its jurisdiction.

DISTRICT I
P.O. Box 1980, Hobbs, NM 88241-1980

DISTRICT II
P.O. Drawer DD, Artesia, NM 88211-0719

DISTRICT III
1000 Rio Brazos Rd., Aztec, NM 87410

DISTRICT IV
P.O. BOX 2088, SANTA FE, N.M. 87504-2088

State of New Mexico
Energy, Minerals and Natural Resources Department

Form C-102
Revised February 10, 1994
Submit to Appropriate District Office
State Lease - 4 Copies
Fee Lease - 3 Copies

OIL CONSERVATION DIVISION

P.O. Box 2088
Santa Fe, New Mexico 87504-2088

☐ AMENDED REPORT

WELL LOCATION AND ACREAGE DEDICATION PLAT

API Number 30-015-29132	Pool Code 29663	Pool Name Happy Valley Delaware
Property Code	Property Name FEDERAL "L"	Well Number 4
OGRID No.	Operator Name MERIT ENERGY COMPANY	Elevation 3306

Surface Location

UL or lot No.	Section	Township	Range	Lot Idn	Feet from the	North/South line	Feet from the	East/West line	County
M	34	22 S	26 E		660	SOUTH	330	WEST	EDDY

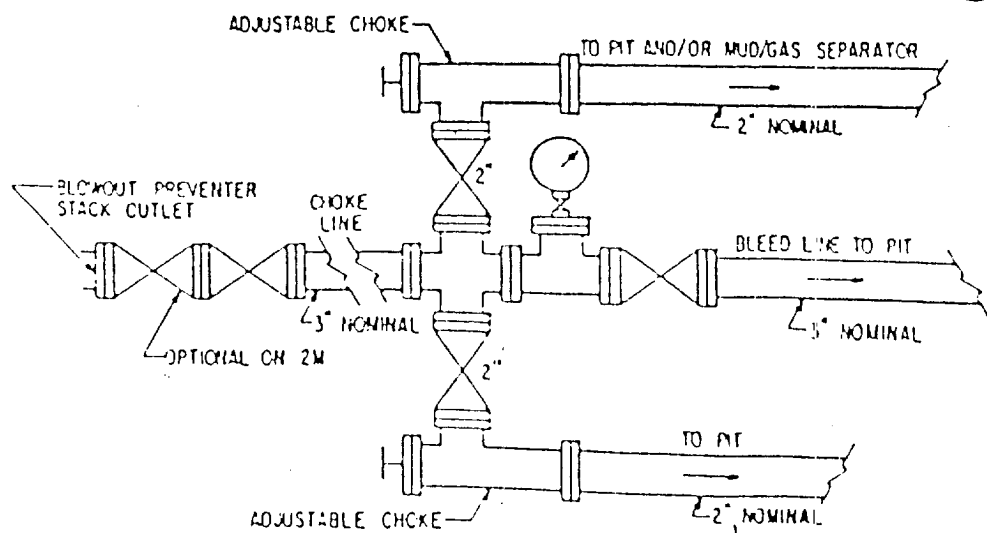
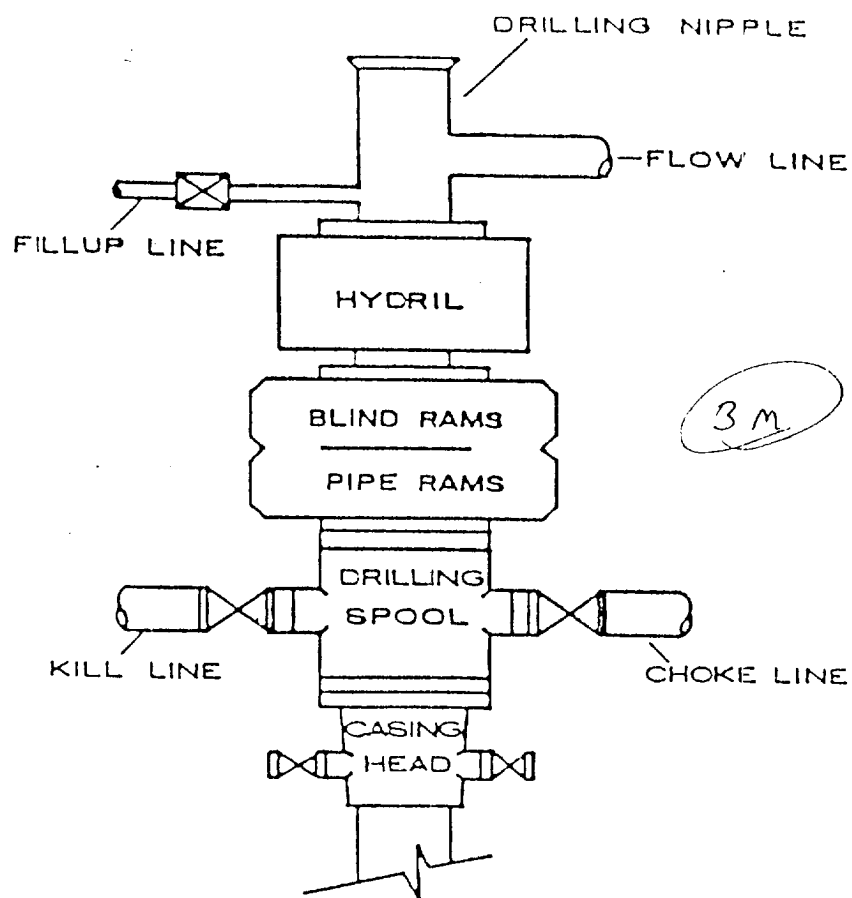
Bottom Hole Location If Different From Surface

UL or lot No.	Section	Township	Range	Lot Idn	Feet from the	North/South line	Feet from the	East/West line	County

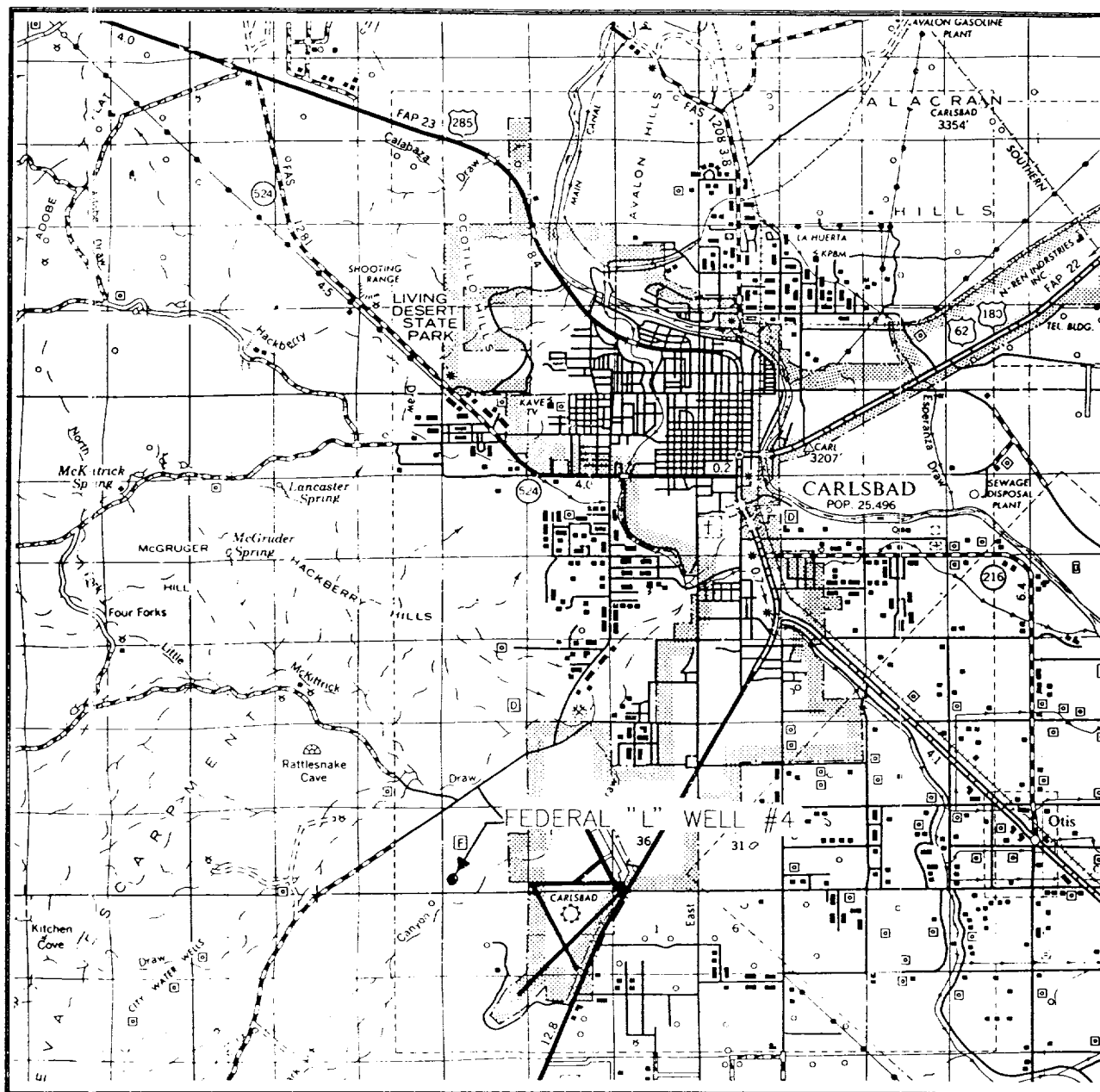
Dedicated Acres 40	Joint or Infill	Consolidation Code	Order No.
-----------------------	-----------------	--------------------	-----------

NO ALLOWABLE WILL BE ASSIGNED TO THIS COMPLETION UNTIL ALL INTERESTS HAVE BEEN CONSOLIDATED
OR A NON-STANDARD UNIT HAS BEEN APPROVED BY THE DIVISION

	<p>OPERATOR CERTIFICATION</p> <p>I hereby certify the the information contained herein is true and complete to the best of my knowledge and belief.</p> <p><i>Russell White</i> Signature</p> <p>Russell White Printed Name</p> <p>Operations Supt Title</p> <p>5-30-96 Date</p>
	<p>SURVEYOR CERTIFICATION</p> <p>I hereby certify that the well location shown on this plat was plotted from field notes of actual surveys made by me or under my supervision and that the same is true and correct to the best of my belief.</p> <p>APRIL 3, 1996</p> <p>Date Surveyed</p> <p>Signature & Seal of Professional Surveyor</p> <p><i>Ronald J. Eidson</i> 4-03-96 W.O. Num. 96-170415</p> <p>Certificate No. JOHN W. WEST 676 RONALD J. EIDSON 3239 GARY EIDSON 12641</p>

BOP STACK

VICINITY MAP



SCALE: 1" = 2 MILES

SEC. 24 TWP. 22-S RGE. 26-E

SURVEY N.M.P.M.

COUNTY EDDY

DESCRIPTION 660' FSL & 330' FWL

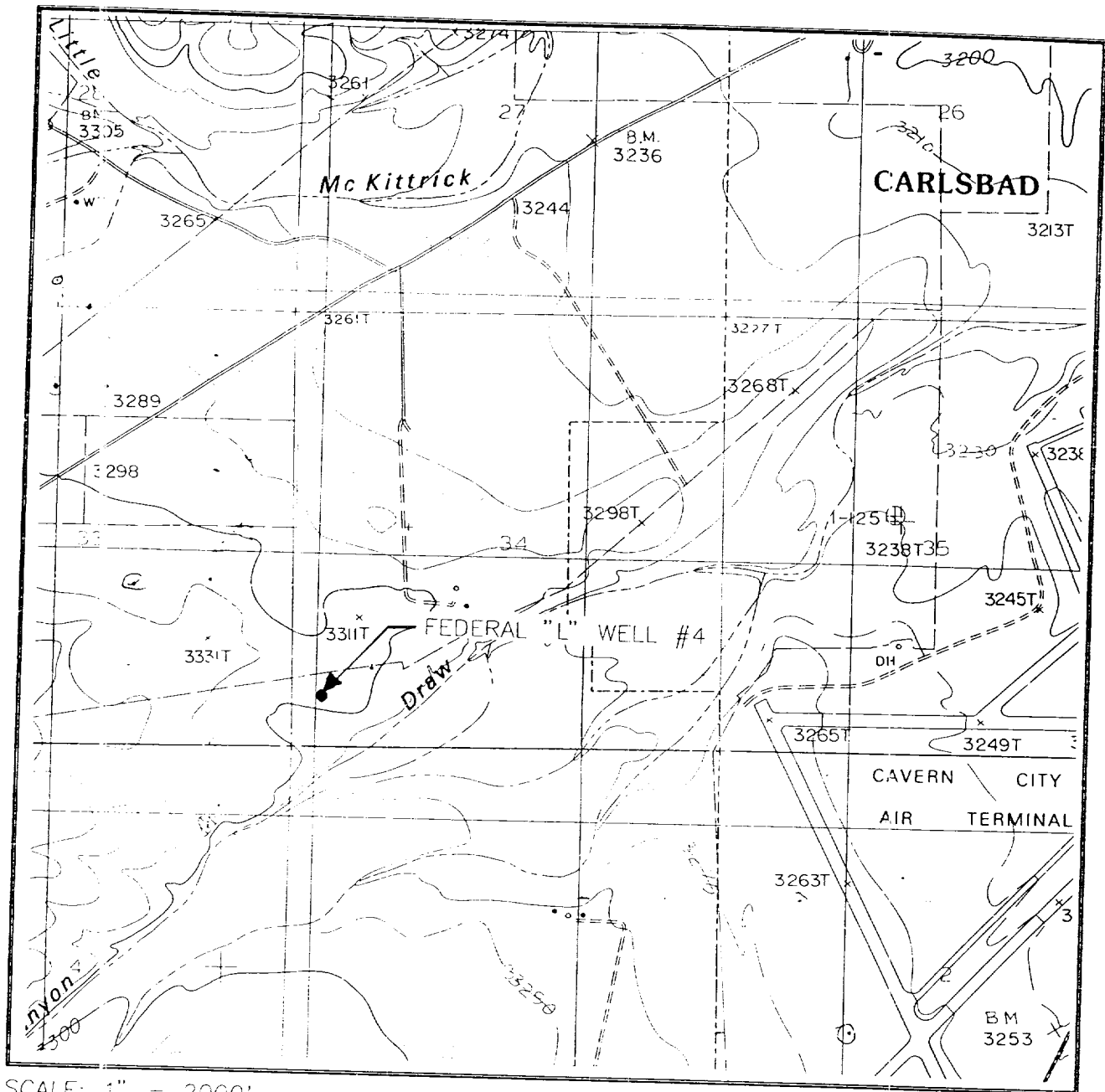
ELEVATION 3306

OPERATOR MERIT ENERGY COMPANY

LEASE FEDERAL "L"

JOHN WEST ENGINEERING
HOBBS, NEW MEXICO
(505) 393-3117

VERIFICATION MAP



SCALE: 1" = 2000'

CONTOUR INTERVAL:
KITCHEN COVE- 20'

SEC. 34 TWP. 22-S RGE. 26-E

SURVEY N.M.P.M.

COUNTY EDDY

DESCRIPTION 660' FSL & 330' FWL

ELEVATION 3306

OPERATOR MERIT ENERGY COMPANY

LEASE FEDERAL "L"

U.S.G.S. TOPOGRAPHIC MAP

KITCHEN COVE, N.M.

JOHN WEST ENGINEERING
HOBBS, NEW MEXICO
(505) 393-3117