

N. M. Oil Cons. Division

811 S. 1ST ST.

ARTESIA, NM 88210-2834

Form 3160-3
(July 1992)SUBMIT IN TRIPLICATE*
(Other instructions on
reverse side)FORM APPROVED
OMB NO. 1004-0136
Expires: February 28, 1995UNITED STATES
DEPARTMENT OF THE INTERIOR
BUREAU OF LAND MANAGEMENT

RECEIVED

APPLICATION FOR PERMIT TO DRILL OR DEEPEN

1A. TYPE OF WORK

DRILL ☒DEEPEN ☐

MAR 07 1997

B. TYPE OF WELL

OIL
WELL ☒GAS
WELL ☐OTHER ☐

OIL CON. DIV.

2. NAME OF OPERATOR

PENWELL ENERGY INC. 147380 (BILL PIERCE) DIST. 2

Phone 915-683-2534

3. ADDRESS AND TELEPHONE NO.

1100 ARCO BUILDING 600 N MERINFELD MIDLAND, TEXAS 79701

4. LOCATION OF WELL (Report location clearly and in accordance with any State requirements.)*
At surface1980' FSL & 660' FWL SEC. 30 T18S-R31E EDDY CO. NEW MEXICO
At proposed prod. zone SAME

14. DISTANCE IN MILES AND DIRECTION FROM NEAREST TOWN OR POST OFFICE*

Approximately 7 miles Southeast of Loco Hills new Mexico

16. DISTANCE FROM PROPOSED*
LOCATION TO NEAREST
PROPERTY OR LEASE LINE, FT.
(Also to nearest drig. salt line, if any)

660'

16. NO. OF ACRES IN LEASE

470

17. NO. OF ACRES ASSIGNED
TO THIS WELL

40

18. DISTANCE FROM PROPOSED LOCATION*
TO NEAREST WELL, DRILLING, COMPLETED,
OR APPLIED FOR, ON THIS LEASE, FT.

600'

19. PROPOSED DEPTH

10,500'

20. ROTARY OR CABLE TOOLS

ROTARY

21. ELEVATIONS (Show whether DF, RT, GR, etc.)

3567' GR.

22. APPROX. DATE WORK WILL START*

As soon as approved

23. PROPOSED CASING AND CEMENTING PROGRAM

SIZE OF HOLE	GRADE, SIZE OF CASING	WEIGHT PER FOOT	SETTING DEPTH	QUANTITY OF CEMENT
24"	20" Conductor	.25 Wall Thick.	40'	Cement to surface/Redi-mix
17½"	H-40 13 3/8"	48	450'	400 Sx. Class "C" Neat/3% CaCl.
12½"	J-55 8 5/8"	32	2800'	1000 Sx Class "C" Circulate to S
7 7/8"	N-80 5½"	17	10500'	1050 Sx Two stage job

1. Drill 25" hole to 40'. set 40' of conductor pipe cement to surface with Redi-mix.
2. Drill 17½" hole to 450'. Run and set 450' of 48# H-40 13 3/8" ST&C casing. Cement with 400 Sx. Class "C" + circulate cement to surface.
3. Drill 12½" hole to 2800'. Run and set 2800' of 8 5/8" J-55 32# ST&C casing. Cement with 700 Sx. Class "C" light tail in with 300 Sx. Class "C" neat + 2% CaCl circulate cement to surface.
4. Drill 7 7/8" hole to 10,500'. Run and set 10,500' of 5½" 17# N-80 LT&C casing. Cement 1st stage with 450 Sx. Class "H" cement with additives. DV tool set at 6800'± cement 2nd stage with 400 Sx. Class "C" light + additives tail in with 200 Sx. Class "C" light + additives bring cement back to 2600'± into 8 5/8" casing.

IN ABOVE SPACE DESCRIBE PROPOSED PROGRAM: If proposal is to deepen, give data on present productive zone and proposed new productive zone. If proposal is to drill or deepen directionally, give pertinent data on subsurface locations and measured and true vertical depths. Give blowout preventer program, if any.

24.

SIGNED

Joe T. Jones

TITLE

Agent

DATE 02/14/97

(This space for Federal or State office use)

PERMIT NO.

APPROVAL DATE

Application approval does not warrant or certify that the applicant holds legal or equitable title to those rights in the subject lease which would entitle the applicant to conduct operations thereon.

CONDITIONS OF APPROVAL, IF ANY:

(ORIG. SGD.) TONY L. FERGUSON

ADM, MINERALS

APPROVED BY

TITLE

DATE

3-5-97

*See Instructions On Reverse Side

DISTRICT I
P.O. Box 1980, Hobbs, NM 88240

DISTRICT II
P.O. Drawer DD, Artesia, NM 88210

DISTRICT III
1000 Rio Brazos Rd., Aztec, NM 87410

State of New Mexico
Energy, Minerals and Natural Resources Department

Form C-102
Revised February 10, 1994
Instruction on back
Submit to Appropriate District Office
State Lease - 4 Copies
Fee Lease - 3 Copies

OIL CONSERVATION DIVISION

P.O. Box 2088
Santa Fe, New Mexico 87504-2088

☐ AMENDED REPORT

WELL LOCATION AND ACREAGE DEDICATION PLAT

API Number 30-015-29428	Pool Code 96686	Pool Name Wildcat Shugart; Wolfcamp, East
Property Code 19509	Property Name West Shugart "30" Federal	Well Number 5
OGRID No. 147380	Operator Name Penwell Energy Inc.	Elevation 3567'

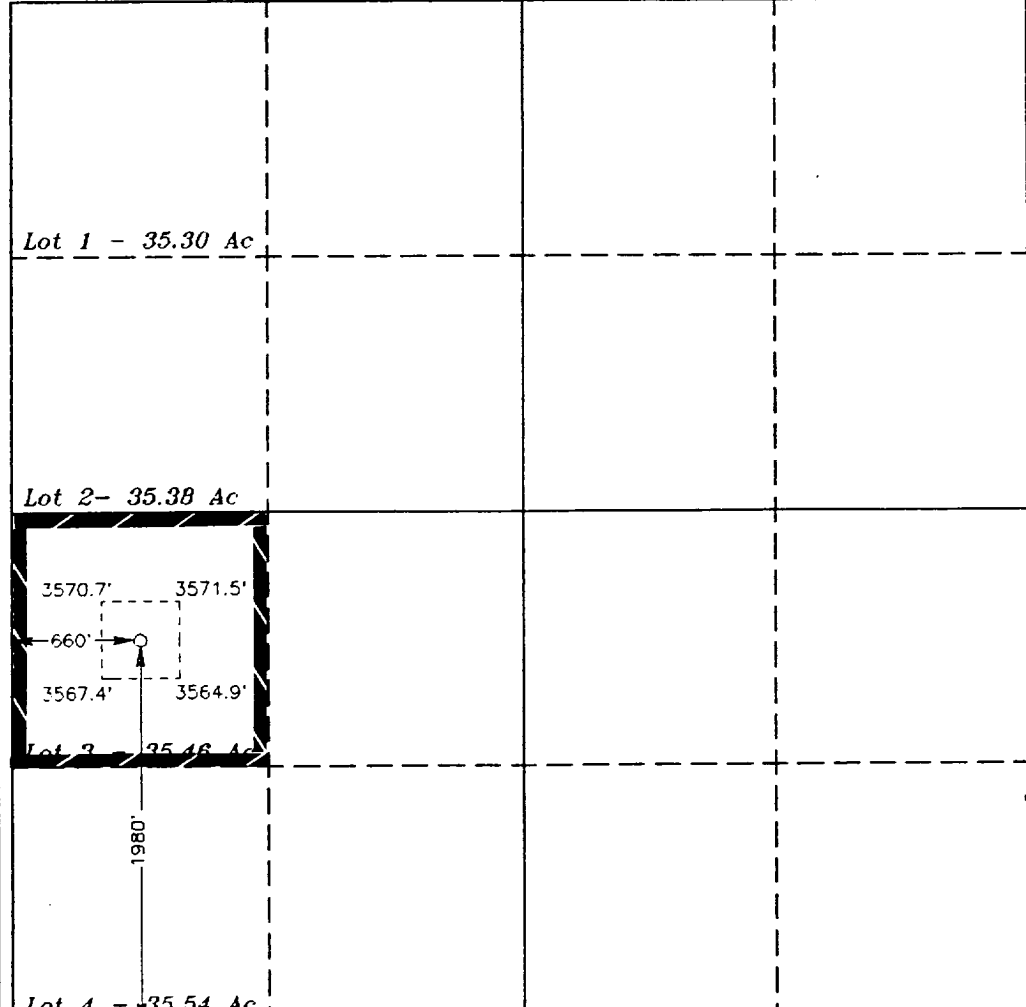
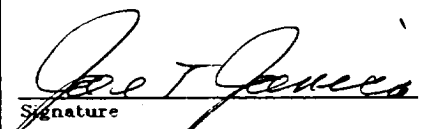
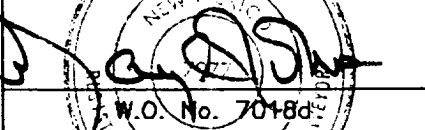
Surface Location

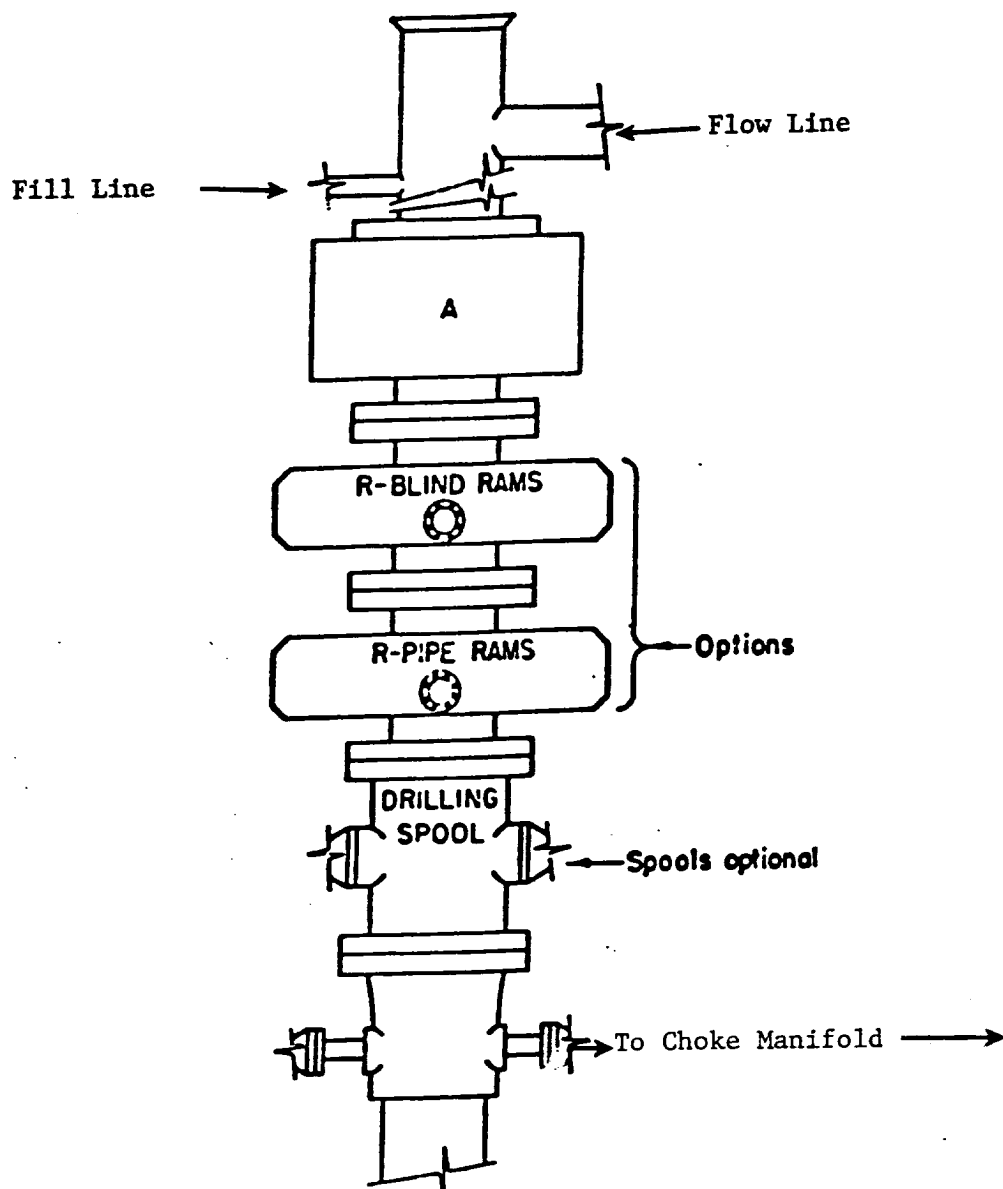
UL or lot No. 4	Section 30	Township 18 S	Range 31 E	Lot Idn	Feet from the 1980	North/South line South	Feet from the 660	East/West line West	County Eddy
---------------------------	----------------------	-------------------------	----------------------	---------	------------------------------	----------------------------------	-----------------------------	-------------------------------	-----------------------

Bottom Hole Location If Different From Surface

UL or lot No.	Section	Township	Range	Lot Idn	Feet from the	North/South line	Feet from the	East/West line	County
Dedicated Acres 40					Joint or Infill		Consolidation Code	Order No.	

NO ALLOWABLE WILL BE ASSIGNED TO THIS COMPLETION UNTIL ALL INTERESTS HAVE BEEN CONSOLIDATED
OR A NON-STANDARD UNIT HAS BEEN APPROVED BY THE DIVISION

<p>Lot 1 - 35.30 Ac</p> <p>Lot 2 - 35.38 Ac</p> <p>Lot 3 - 35.48 Ac</p> <p>Lot 4 - 35.54 Ac</p> 	<p>OPERATOR CERTIFICATION</p> <p>I hereby certify the information contained herein is true and complete to the best of my knowledge and belief.</p> <p> Signature</p> <p>JOE T JANICA Printed Name</p> <p>AGENT Title</p> <p>02/14/97 Date</p> <p>SURVEYOR CERTIFICATION</p> <p>I hereby certify that the well location shown on this plat was plotted from field notes of actual surveys made by me or under my supervision and that the same is true and correct to the best of my belief.</p> <p>January 18, 1997 Date Surveyed</p> <p> Signature & Seal of Professional Surveyor</p> <p>W.O. No. 7018d Certificate No. Gay L. Jones 7977</p> <p>HASIN SURVEYS</p>
---	--



ARRANGEMENT SRRA

1500 Series
5000# Working Pressure

EXHIBIT "E"
B.O.P. SKETCH TO BE USED ON
PENWELL ENERGY INC.
WEST SHUGART "30" FEDERAL # 5
1980' FSL & 660' FWL SEC. 30
T18S-R31E EDDY CO. NM

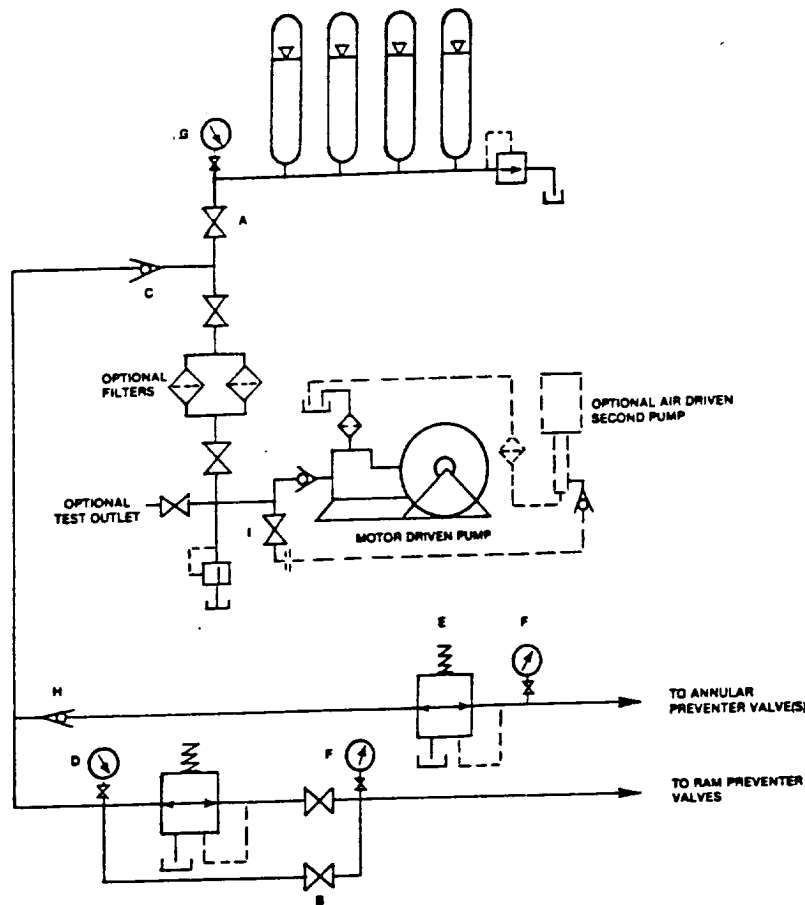


FIGURE K6-1. The schematic sketch of an accumulator system shows required and optional components.

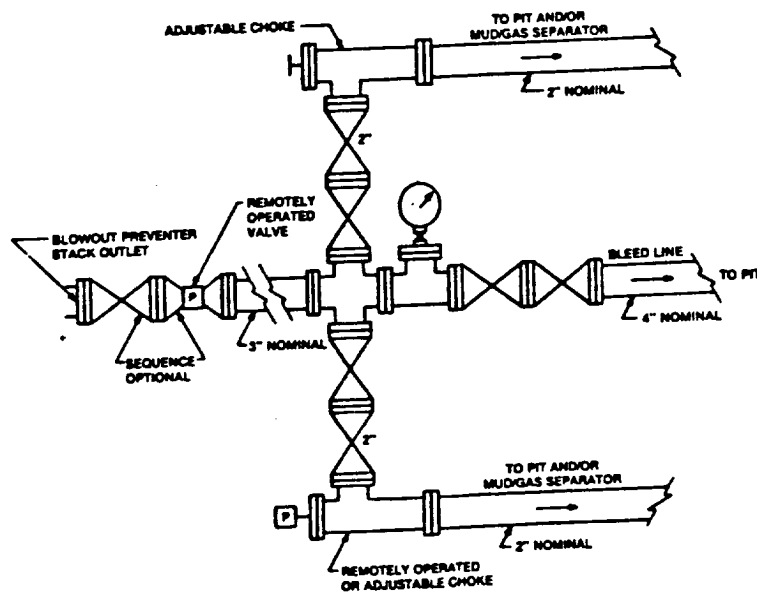


FIGURE K4-2. Typical choke manifold assembly for 5M rated working pressure service — surface installation.

EXHIBIT "I-E"
CHOKE MANIFOLD & CLOSING UNIT

PENWELL ENERGY INC.
WEST SHUGART "30" FEDERAL # 5
1980' FSL & 560' FWL SEC. 30
T1980-031E EDDY CO. NM