

FIGURE K6-1. The schematic sketch of an accumulator system shows required and optional components.

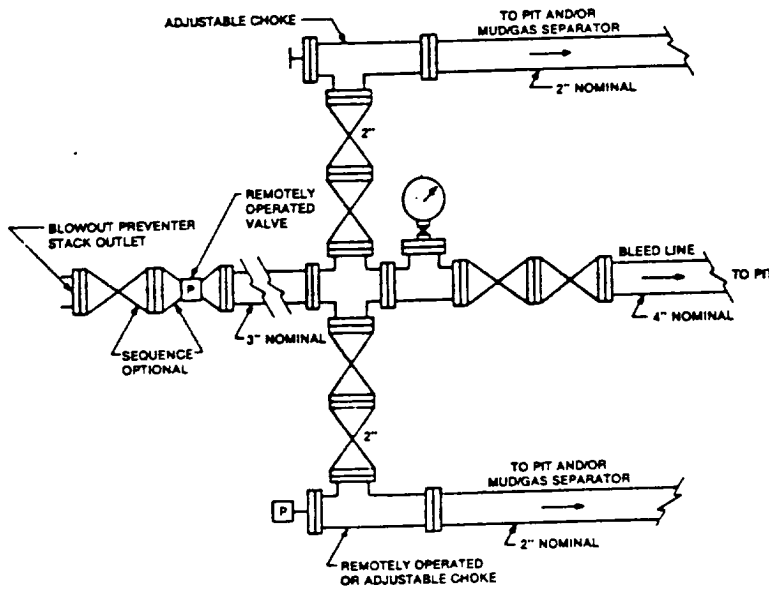


FIGURE K4-2. Typical choke manifold assembly for 5M rated working pressure service — surface installation.

EXHIBIT " 1-E"
CHOKE MANIFOLD & CLOSING UNIT
PENWELL ENERGY, INC.
WEST SHUGART "30" FEDERAL # 6
UNIT "G" SECTION 30
T18S-R31E EDDY CO. NM