

N. M. Oil Cons. Division

811 S. 1ST ST.

ARTESIA 88210-2834

DEPARTMENT OF THE INTERIOR

BUREAU OF LAND MANAGEMENT

APPLICATION FOR PERMIT TO DRILL, DEEPEN, OR PLUG BACK

1a. TYPE OF WORK

DRILL ☒

DEEPEN ☐

PLUG BACK ☐

b. TYPE OF WELL

OIL WELL ☒

GAS WELL ☐

OTHER ☐

SINGLE ZONE ☐

MULTIPLE ZONE ☐

2. NAME OF OPERATOR

Marbob Energy Corporation

14049

3a. Area Code & Phone No.

505-748-3303

3. ADDRESS OF OPERATOR

P. O. Box 727 Artesia, NM 88210

4. LOCATION OF WELL (Report location clearly and in accordance with any State requirements.)

At surface

2625 FSL 660 FEL

At proposed prod. zone

SAME

Unit I

14. DISTANCE IN MILES AND DIRECTION FROM NEAREST TOWN OR POST OFFICE

EAST OF ARTESIA ON HWY 82 APPROX 20.7 MILES

10. DISTANCE FROM PROPOSED LOCATION TO NEAREST PROPERTY OR LEASE LINE, FT.

(Also to nearest drlg. unit line, if any)

660'

18. NO. OF ACRES IN LEASE

1120

17. NO. OF ACRES ASSIGNED TO THIS WELL

40

18. DISTANCE FROM PROPOSED LOCATION TO NEAREST WELL, DRILLING, COMPLETED, OR APPLIED FOR, ON THIS LEASE, FT.

19. PROPOSED DEPTH

4800'

20. ROTARY OR CABLE TOOLS

ROTARY

21. ELEVATIONS (Show whether DF, RT, GR, etc.)

3589' GR

22. APPROX. DATE WORK WILL START

APRIL 15, 1997

23.

PROPOSED CASING AND CEMENTING PROGRAM

HOLE SIZE	CASING SIZE	WEIGHT/FOOT	GRADE	THREAD TYPE	SETTING DEPTH	QUANTITY OF CEMENT
12 1/4"	8 5/8"	24#	J-55	LT&C	350'	CIRCULATED
7 7/8"	5 1/2"	17#	J-55	LT&C	4800'	CIRCULATED

PAY ZONE WILL BE SELECTIVELY PERFORATED AND STIMULATED AS NEEDED FOR OPTIMUM PRODUCTION.

SUBJECTS ATTACHED ARE: 1. LOCATION & DEDICATION PLAT
LIKE APPROVAL 2. SUPPLEMENTAL DRILLING DATA
BY STATE FOR 3. SURFACE USE PLAN
UNORTHODOX LOCATION

APPROVAL SUBJECT TO
GENERAL REQUIREMENTS AND
SPECIAL STIPULATIONS
ATTACHED

PLEASE SEE MASTER SURFACE USE PLAN ON FILE AT BLM OFFICE

IN ABOVE SPACE DESCRIBE PROPOSED PROGRAM: If proposal is to deepen or plug back, give data on present productive zone and proposed new productive zone. If proposal is to drill or deepen directionally, give pertinent data on subsurface locations and measured and true vertical depths. Give blowout preventer program, if any.

24.

SIGNED

Rhonda Nelson

TITLE Production Clerk

DATE 3/7/97

(This space for Federal or State office use)

PERMIT NO.

APPROVAL DATE

APPROVED BY

(ORIG. SGD.) TONY L. FERGUSON

ADM, MINERALS

TITLE

DATE

4.8-91

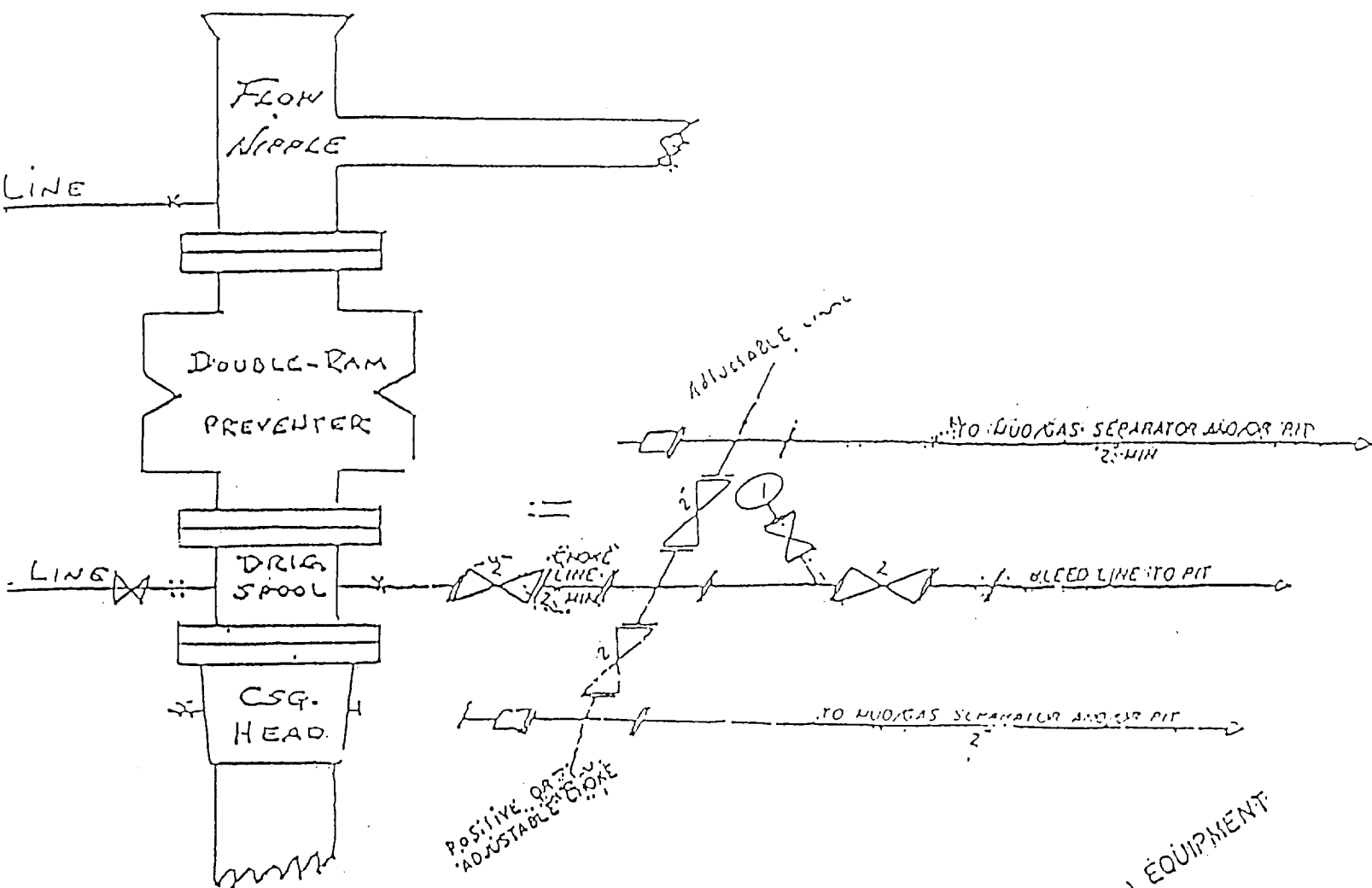
CONDITIONS OF APPROVAL, IF ANY:

						OPERATOR CERTIFICATION	
						<p><i>I hereby certify the information contained herein is true and complete to the best of my knowledge and belief.</i></p> <p><u>Rhonda Nelson</u> Signature</p> <p><u>RHONDA NELSON</u> Printed Name</p> <p><u>PRODUCTION CLERK</u> Title</p> <p><u>3/6/97</u> Date</p>	
						SURVEYOR CERTIFICATION	
						<p><i>I hereby certify that the well location shown on this plat was plotted from field notes of actual surveys made by me or under my supervision and that the same is true and correct to the best of my belief.</i></p> <p><u>FEBRUARY 19, 1997</u> Date Surveyed</p> <p><u>CDG</u> Signature & Seal of Professional Surveyor</p> <p><u>2-25-97</u> 97-11-0333</p> <p>Certificate No. <u>JOHN W. WEST</u> 676 <u>RONALD J. EIDSON</u> 3239 <u>GARY EIDSON</u> 12641</p>	

EXHIBIT #1

B U P & CHOKE MANIFOLD

10"/900 Cameron SS Space Saver
3000# Working Pressure
3.000# Working Pressure Choke Manifold



2M CHOKE MANIFOLD EQUIPMENT

MARBOB ENERGY CORPORATION

Burch Keely Unit No. 844
2625' FSL and 660' FEL
Section 23-17S-29E
Eddy County, New Mexico
Exhibit #1

Attachment to Exhibit #1
NOTES REGARDING THE BLOWOUT PREVENTERS

1. Drilling nipple to be so constructed that it can be removed without use of a welder through rotary table opening, with minimum I.D. equal to preventer bore.
2. Wear ring to be properly installed in head.
3. Blow out preventer and all fittings must be in good condition, 3000 psi W.P. minimum.
4. All fittings to be flanged.
5. Safety valve must be available on rig floor at all times with proper connections, valve to be full bore 3000 psi W.P. minimum.
6. All choke and fill lines to be securely anchored, especially ends of choke lines.
7. Equipment through which bit must pass shall be at least as large as the diameter of the casing being drilled through.
8. Kelly cock on kelly.
9. Extension wrenches and hand wheels to be properly installed.
10. Blow out preventer control to be located as close to driller's position as feasible.
11. Blow out preventer closing equipment to include minimum 40 gallon accumulator, two independent sources of pump power on each closing unit installation, and meet all API specifications.