

UNITED STATES
DEPARTMENT OF THE INTERIOR
BUREAU OF LAND MANAGEMENT

APPLICATION FOR PERMIT TO DRILL, DEEPEN, OR PLUG BACK

1a. TYPE OF WORK DRILL <input checked="" type="checkbox"/> DEEPEN <input type="checkbox"/> PLUG BACK <input type="checkbox"/>		5. LEASE DESIGNATION AND SERIAL NO. LC-028793C	
b. TYPE OF WELL OIL WELL <input checked="" type="checkbox"/> GAS WELL <input type="checkbox"/> OTHER <input type="checkbox"/>		6. IF INDIAN, ALLOTTEE OR TRIBE NAME 30-015-29493	
2. NAME OF OPERATOR Marbob Energy Corporation		7. UNIT AGREEMENT NAME BURCH KEELY UNIT	
3. ADDRESS OF OPERATOR P. O. BOX 227 Artesia, NM 86801		8. FARM OR LEASE NAME BURCH KEELY UNIT 6497	
4. LOCATION OF WELL (Report location clearly and in accordance with any State requirements.) At surface 2625 FSL 660 FEL At proposed prod. zone SAME		9. WELL NO. 844	
14. DISTANCE IN MILES AND DIRECTION FROM NEAREST TOWN OR POST OFFICE* EAST OF ARTESIA ON HWY 82 APPROX 20.7 MILES		10. FIELD AND POOL, OR WILDCAT GRBG JACKSON SR Q GRBG SA	
15. DISTANCE FROM PROPOSED* LOCATION TO NEAREST PROPERTY OR LEASE LINE, FT. (Also to nearest drlg. unit line, if any) 660'		11. SEC., T., R., M., OR BLK. AND SURVEY OR AREA SEC. 23-T17S-R29E	
16. NO. OF ACRES IN LEASE 1120		12. COUNTY OR PARISH EDDY	
17. NO. OF ACRES ASSIGNED TO THIS WELL 40		13. STATE NM	
18. DISTANCE FROM PROPOSED LOCATION* TO NEAREST WELL, DRILLING, COMPLETED, OR APPLIED FOR, ON THIS LEASE, FT. 4800'		19. PROPOSED DEPTH 4800'	
20. ROTARY OR CABLE TOOLS ROTARY		21. APPROX. DATE WORK WILL START* 12/1/98	
21. ELEVATIONS (Show whether DF, RT, GR, etc.) 3589' GR		22. APPROX. DATE WORK WILL START* 12/1/98	

PROPOSED CASING AND CEMENTING PROGRAM

HOLE SIZE	CASING SIZE	WEIGHT/FOOT	GRADE	THREAD TYPE	SETTING DEPTH	QUANTITY OF CEMENT*
12 1/4"	8 5/8"	24#	J-55	ST&C 350'	350'	300' UNLESS
7 7/8"	5 1/2"	17#	J-55	LT&C	4800'	SUFFICIENT TO COVER ALL OIL & GAS HORIZONS

PAY ZONE WILL BE SELECTIVELY PERFORATED AND STIMULATED AS NEEDED FOR OPTIMUM PRODUCTION.

ATTACHED ARE: 1. WELL LOCATION AND ACREAGE DEDICATION PLAT
2. SUPPLEMENTAL DRILLING DATA
3. SURFACE USE PLAN

MASTER SURFACE USE PLAN ON FILE AT BLM ROSWELL

** THIS APD WAS PREVIOUSLY APPROVED ON 4/8/97

APPROVAL SUBJECT TO
GENERAL REQUIREMENTS AND
SPECIAL STIPULATIONS

IN ABOVE SPACE DESCRIBE PROPOSED PROGRAM: If proposal is to deepen or plug back, give data on present and proposed pay zone and proposed new productive zone. If proposal is to drill or deepen directionally, give pertinent data on subsurface locations and measured and true vertical depths. Give blowout preventer program, if any.

24. SIGNED Rhonda Nelson TITLE Production Clerk DATE 10/28/98

(This space for Federal or State office use)

PERMIT NO. (ORIG. SGD.) ARMANDO A. LOPEZ Acting APPROVAL DATE 12/14/98
APPROVED BY (ORIG. SGD.) ARMANDO A. LOPEZ Assistant Field Office Manager, DATE 12/14/98
CONDITIONS OF APPROVAL, IF ANY: TITLE Lands and Minerals

*See Instructions On Reverse Side

DISTRICT I
P.O. Box 1980, Hobbs, NM 88241-1980

DISTRICT II
P.O. Drawer DD, Artesia, NM 88211-0719

DISTRICT III
1000 Rio Brazos Rd., Aztec, NM 87410

DISTRICT IV
P.O. BOX 2088, SANTA FE, N.M. 87504-2088

State of New Mexico
Energy, Minerals and Natural Resources Depart

Form C-102
Revised February 10, 1994
Submit to Appropriate District Office
State Lease - 4 Copies
Fee Lease - 3 Copies

OIL CONSERVATION DIVISION
P.O. Box 2088
Santa Fe, New Mexico 87504-2088

☐ AMENDED REPORT

WELL LOCATION AND ACREAGE DEDICATION PLAT

API Number	Pool Code	Pool Name
	28509	GRBG JACKSON SR Q GRBG SA
Property Code	Property Name	Well Number
6497	BURCH KEELY UNIT	844
OGRID No.	Operator Name	Elevation
14049	MARBOB ENERGY COPORATION	3589'

Surface Location									
UL or lot No.	Section	Township	Range	Lot Idn	Feet from the	North/South line	Feet from the	East/West line	County
1	23	17 S	29 E		2625	SOUTH	660	EAST	EDDY

Bottom Hole Location If Different From Surface									
UL or lot No.	Section	Township	Range	Lot Idn	Feet from the	North/South line	Feet from the	East/West line	County
Dedicated Acres		Joint or Infill		Consolidation Code		Order No.			
40									

NO ALLOWABLE WILL BE ASSIGNED TO THIS COMPLETION UNTIL ALL INTERESTS HAVE BEEN CONSOLIDATED
OR A NON-STANDARD UNIT HAS BEEN APPROVED BY THE DIVISION

				3591.3' — 3589.1'	
				3585.5' — 3585.7'	
				2625'	

OPERATOR CERTIFICATION

I hereby certify the the information
contained herein is true and complete to the
best of my knowledge and belief.

Rhonda Nelson
Signature

RHONDA NELSON
Printed Name

PRODUCTION CLERK
Title

10/28/98
Date

SURVEYOR CERTIFICATION

I hereby certify that the well location shown
on this plat was plotted from field notes of
actual surveys made by me or under my
supervision, and that the same is true and
correct to the best of my belief.

FEBRUARY 19, 1997
Date Surveyed

CDG
Signature & Seal of
Professional Surveyor

Ronald J. Edson
97-11-0333

2-25-97
Certificate No.

JOHN W. WEST 676
RONALD J. EDSON 3239
GARY EDSON 12641

DRILLING PROGRAM

Burch Keely Unit No. 844
2625' FSL and 660' FEL
Section 23-17S-29E
Eddy County, New Mexico

10. Anticipated Starting Date and Duration of Operations

Spud Date: Approximately December 1, 1997

Duration of Operations: Once commenced, the drilling operations should be completed in approximately 21 days. If the well is productive, an additional 30 to 60 days will be required for completion and testing of the well.

SURFACE USE AND OPERATING PLAN

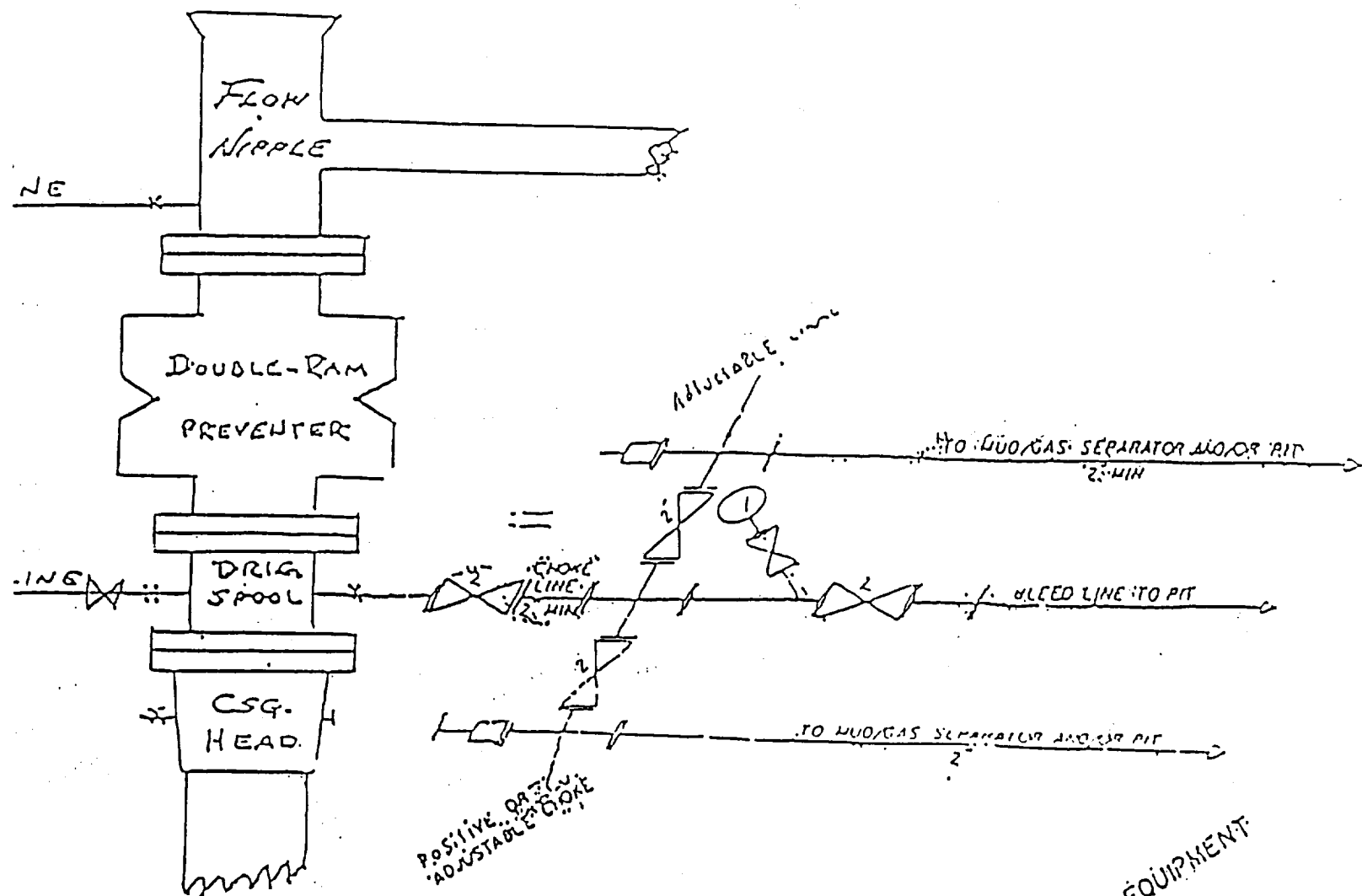
Burch Keely Unit No. 844
2625' FSL and 660' FEL
Section 23-17S-29E
Eddy County, New Mexico

- 1.(c) Directions to Locations: Proceed east on U.S. 82 from Artesia for approximately 20.7 miles. Turn south on Three Trees road. Then, turn east and proceed .1 miles. The road runs through the proposed well location.
- 4.(a) If productive, this well will use Satellite **'A'**.

EXHIBIT #1

B O P & CHOKE MANIFOLD

10"/900 Cameron SS Space Saver
3000# Working Pressure
3000# Working Pressure Choke Manifold



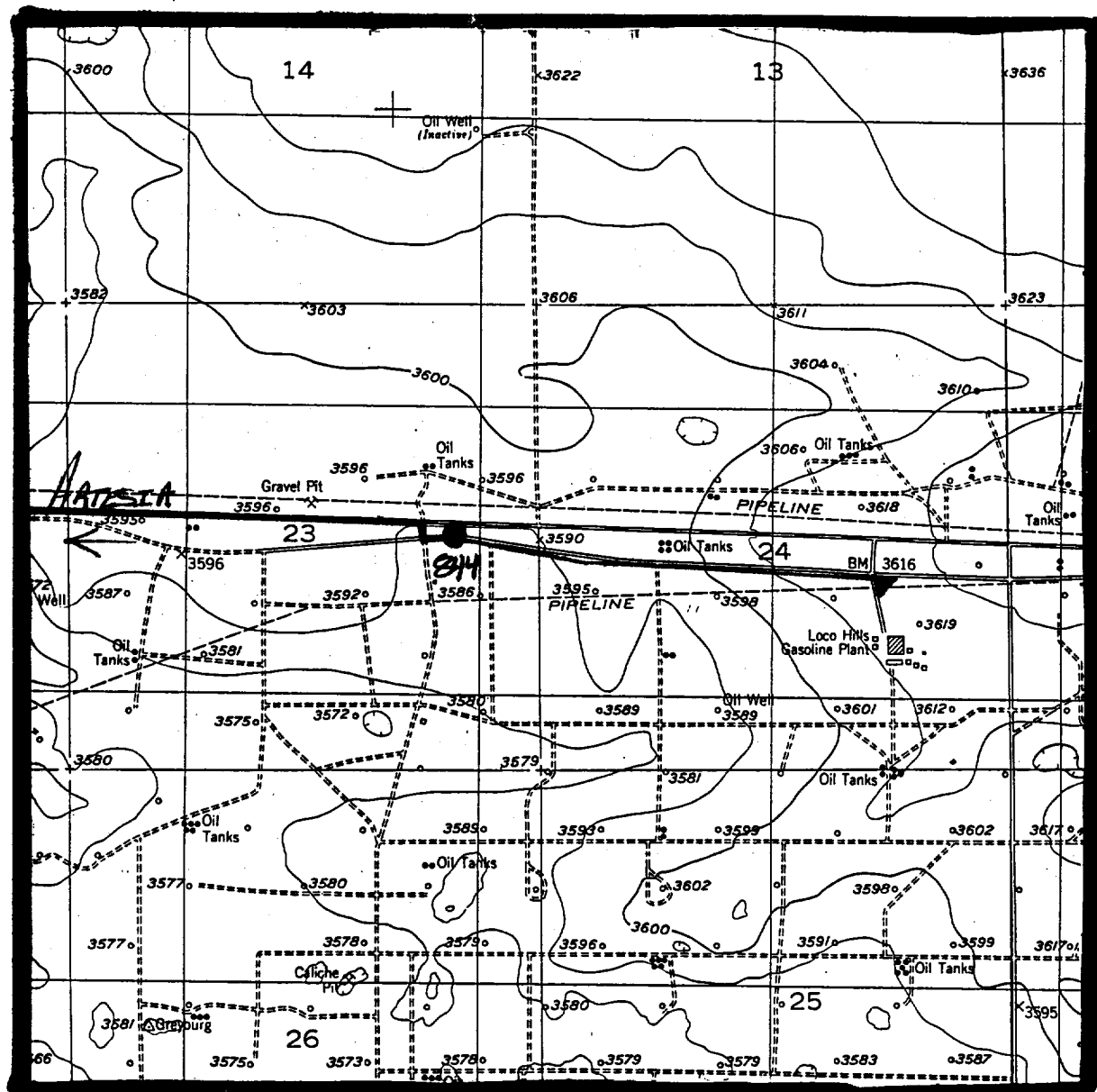
2H CHOKE MANIFOLD EQUIPMENT

MARBOB ENERGY CORPORATION

Burch Keely Unit No. 844
2625' FSL and 660' FEL
Section 23-17S-29E
Eddy County, New Mexico
Exhibit #1

Attachment to Exhibit #1
NOTES REGARDING THE BLOWOUT PREVENTERS

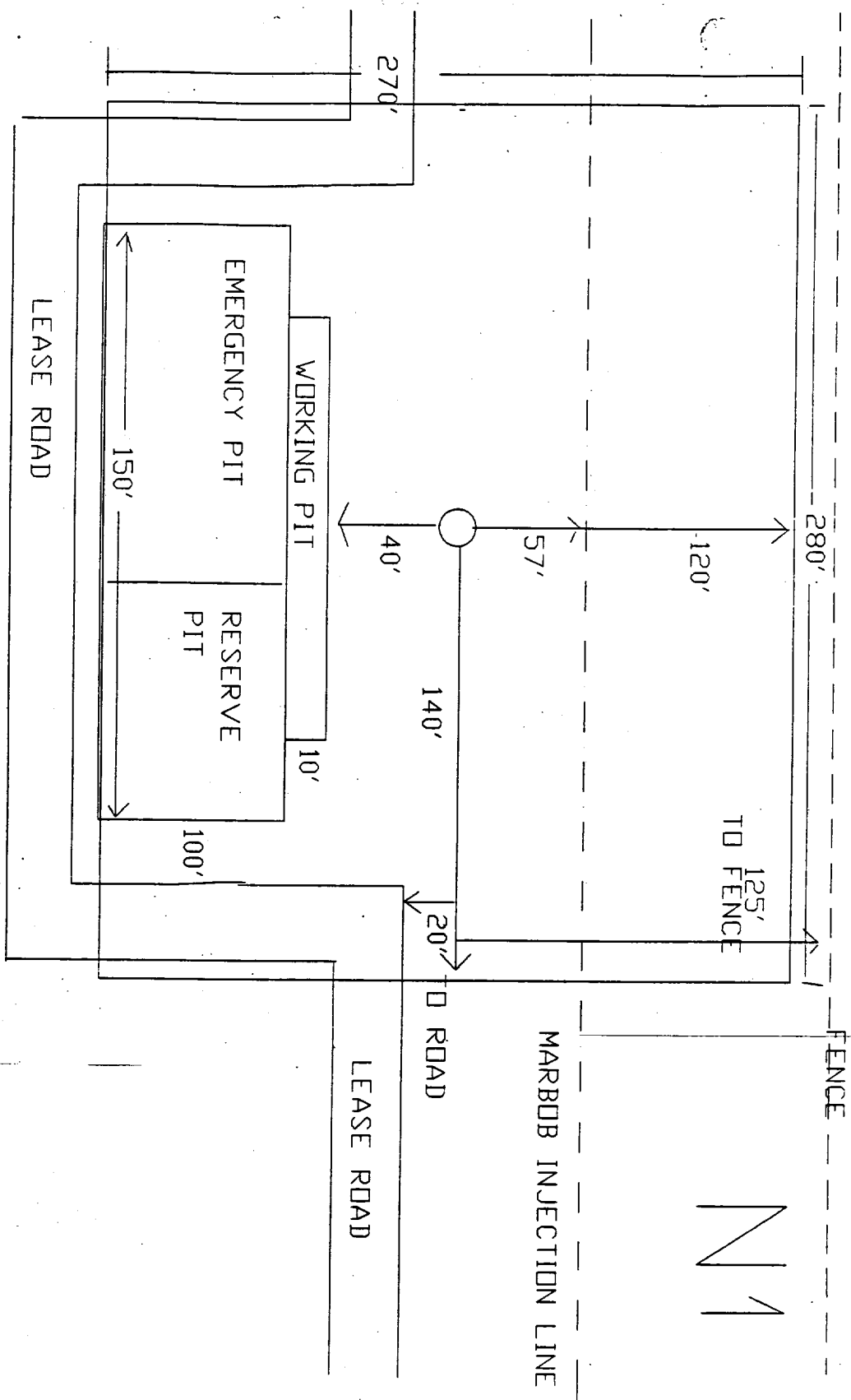
1. Drilling nipple to be so constructed that it can be removed without use of a welder through rotary table opening, with minimum I.D. equal to preventer bore.
2. Wear ring to be properly installed in head.
3. Blow out preventer and all fittings must be in good condition, 3000 psi W.P. minimum.
4. All fittings to be flanged.
5. Safety valve must be available on rig floor at all times with proper connections, valve to be full bore 3000 psi W.P. minimum.
6. All choke and fill lines to be securely anchored, especially ends of choke lines.
7. Equipment through which bit must pass shall be at least as large as the diameter of the casing being drilled through.
8. Kelly cock on kelly.
9. Extension wrenches and hand wheels to be properly installed.
10. Blow out preventer control to be located as close to driller's position as feasible.
11. Blow out preventer closing equipment to include minimum 40 gallon accumulator, two independent sources of pump power on each closing unit installation, and meet all API specifications.



MARBOB ENERGY CORPORATION

Burch Keely Unit No. 844
 2625' FSL and 660' FEL
 Section 23-17S-29E
 Eddy County, New Mexico
 Exhibit #3

**Burch Keely Unit No. 844
2625' FSL and 660' FEL
Section 23-17S-29E
Eddy County, New Mexico
Exhibit #4**



MARBOB ENERGY

BURCH-KEELY UNIT #844
 2625' FSL & 660' FEL
 SEC. 23-T17S-R29E
 EDDY COUNTY, NEW MEXICO