

chf

**DEPARTMENT OF THE INTERIOR
BUREAU OF LAND MANAGEMENT**

APPLICATION FOR PERMIT TO DRILL, DEEPEN, OR PLUG BACK

1a. TYPE OF WORK
 DRILL DEEPEN PLUG BACK

b. TYPE OF WELL
 OIL WELL GAS WELL OTHER

2. NAME OF OPERATOR
 Marbob Energy Corporation 14049

3a. Area Code & Phone No.
 505-748-3303

3. ADDRESS OF OPERATOR
 P. O. Box 227, Artesia, NM 88210

4. LOCATION OF WELL (Report location clearly and in accordance with any State requirements.)
 At surface: 1980 FSL 2615 FEL
 At proposed prod. zone: SAME Unit J

14. DISTANCE IN MILES AND DIRECTION FROM NEAREST TOWN OR POST OFFICE
 EAST OF ARTESIA ON HWY 82 APPROX 20.7 MILES

15. DISTANCE FROM PROPOSED LOCATION TO NEAREST PROPERTY OR LEASE LINE, FT.
 (Also to nearest drlg. unit line, if any) 1980'

16. NO. OF ACRES IN LEASE 640

17. NO. OF ACRES ASSIGNED TO THIS WELL 40

18. DISTANCE FROM PROPOSED LOCATION TO NEAREST WELL, DRILLING, COMPLETED, OR APPLIED FOR, ON THIS LEASE, FT. 4800'

20. ROTARY OR CABLE TOOLS
 ROTARY

21. ELEVATIONS (Show whether DF, RT, GR, etc.)
 3608' GR

22. APPROX. DATE WORK WILL START
 APRIL 15, 1997

5. LEASE DESIGNATION AND SERIAL NO.
 LC-028784A

6. IF INDIAN, ALLOTTEE OR TRIBE NAME

7. UNIT AGREEMENT NAME
 BURCH KEELY UNIT 6497

8. FARM OR LEASE NAME

9. WELL NO.
 841

10. FIELD AND POOL, OR WILDCAT
 GRBG JACKSON SR Q GRBG S.

11. SEC., T., R., M., OR B.L.K. AND SURVEY OR AREA
 SEC. 24-T17S-R29E

12. COUNTY OR PARISH
 EDDY

13. STATE
 NM

RECEIVED
 APR 09 1997
 OIL CON. DIV.
 DIST. 2

PROPOSED CASING AND CEMENT SCHEDULE

HOLE SIZE	CASING SIZE	WEIGHT/FOOT	GRADE	THREAD TYPE	SETTING DEPTH	QUANTITY OF CEMENT
12 1/4"	8 5/8"	24#	J-55	LT&C	350'	CIRCULATE
7 7/8"	5 1/2"	17#	J-55	LT&C	4800'	CIRCULATE

PAY ZONE WILL BE SELECTIVELY PERFORATED AND STIMULATED AS NEEDED FOR OPTIMUM PRODUCTION.

- ATTACHED ARE:
1. LOCATION & DEDICATION PLAT
 2. SUPPLEMENTAL DRILLING DATA
 3. SURFACE USE PLAN

APPROVAL SUBJECT TO GENERAL REQUIREMENTS AND SPECIAL STIPULATIONS ATTACHED
RECEIVED
 MAR 10 '97

SUBJECT TO LIKE APPROVAL BY STATE FOR UNORTHODOX LOCATION

PLEASE SEE MASTER SURFACE USE PLAN ON FILE AT BLM OFFICE

BLM
 ROSWELL, NM

IN ABOVE SPACE DESCRIBE PROPOSED PROGRAM: If proposal is to deepen or plug back, give data on present productive zone and proposed new productive zone. If proposal is to drill or deepen directionally, give pertinent data on subsurface locations and measured and true vertical depths. Give blowout preventer program, if any.

24. SIGNER: Phonda Nelson TITLE: Production Clerk DATE: 3/7/97

PERMIT NO. _____ APPROVAL DATE _____
 (ORIG. SGD.) TONY L. FERGUSON ADM, MINERALS
 APPROVED BY _____ TITLE _____ DATE 4. 8. 97
 CONDITIONS OF APPROVAL, IF ANY:

DISTRICT I
P.O. Box 1980, Hobbs, NM 88241-1980

State of New Mexico

Energy, Minerals and Natural Resources Dep

Form C-102
Revised February 10, 1994
Submit to Appropriate District Office
State Lease - 4 Copies
Fee Lease - 3 Copies

DISTRICT II
P.O. Drawer DD, Artesia, NM 88211-0719

DISTRICT III
1000 Rio Brazos Rd., Aztec, NM 87410

OIL CONSERVATION DIVISION

P.O. Box 2088

Santa Fe, New Mexico 87504-2088

DISTRICT IV
P.O. BOX 2088, SANTA FE, N.M. 87504-2088

AMENDED REPORT

WELL LOCATION AND ACREAGE DEDICATION PLAT

API Number		Pool Code	Pool Name	
		28509	GRBG JACKSON SR Q GRBG SA	
Property Code	Property Name		Well Number	
6497	BURCH KEELY UNIT		841	
OGRID No.	Operator Name		Elevation	
14049	MARBOB ENERGY CORPORATION		3608	

Surface Location

UL or lot No.	Section	Township	Range	Lot Idn	Feet from the	North/South line	Feet from the	East/West line	County
J	24	17 S	29 E		1980	SOUTH	2615	EAST	EDDY

Bottom Hole Location If Different From Surface

UL or lot No.	Section	Township	Range	Lot Idn	Feet from the	North/South line	Feet from the	East/West line	County

Dedicated Acres	Joint or Infill	Consolidation Code	Order No.
40			

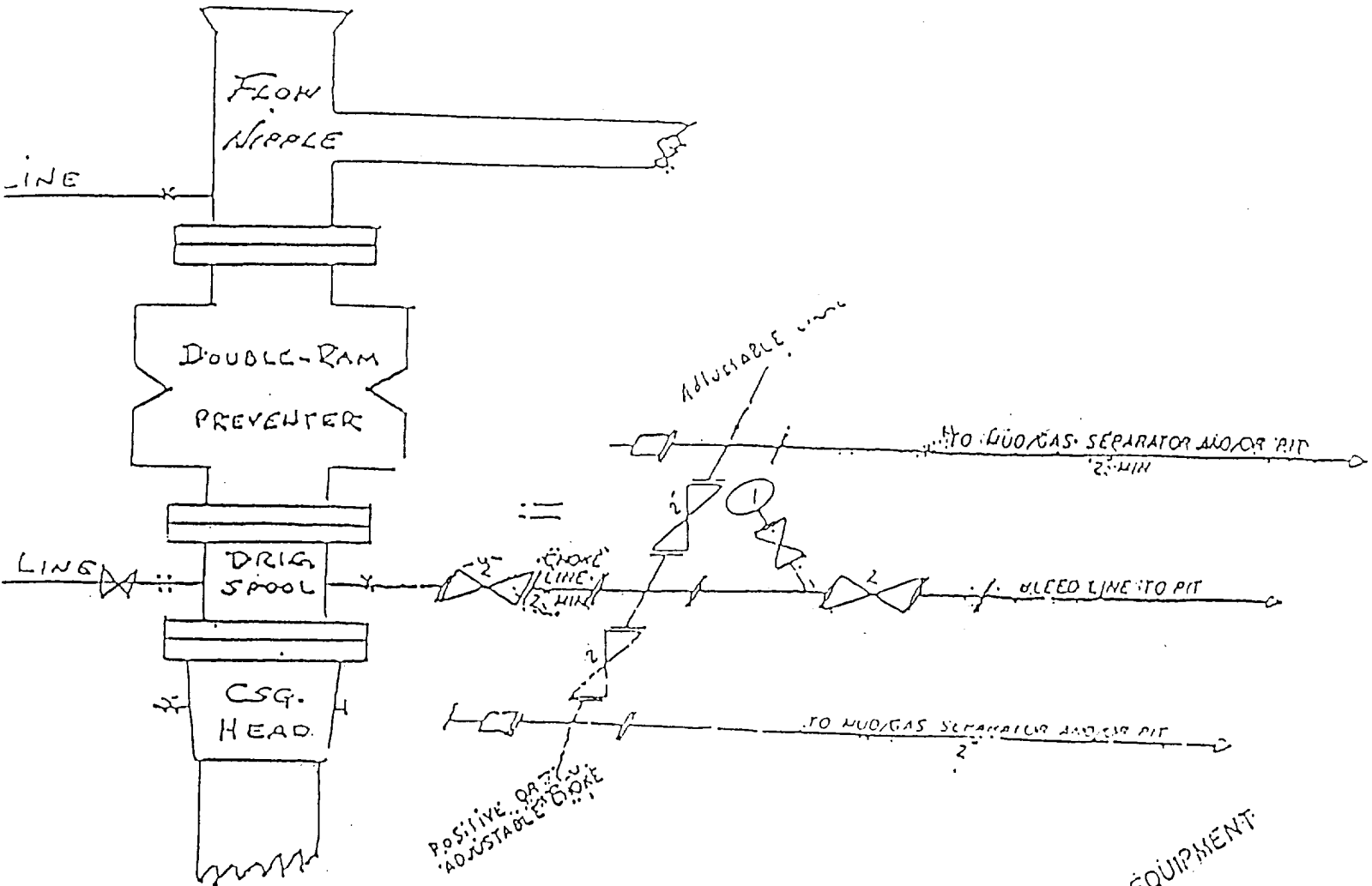
NO ALLOWABLE WILL BE ASSIGNED TO THIS COMPLETION UNTIL ALL INTERESTS HAVE BEEN CONSOLIDATED OR A NON-STANDARD UNIT HAS BEEN APPROVED BY THE DIVISION

	<p align="center">OPERATOR CERTIFICATION</p> <p><i>I hereby certify the the information contained herein is true and complete to the best of my knowledge and belief.</i></p> <p align="right"><i>Rhonda Nelson</i> Signature</p> <p>RHONDA NELSON Printed Name</p> <p>PRODUCTION CLERK Title</p> <p>3/6/97 Date</p>
	<p align="center">SURVEYOR CERTIFICATION</p> <p><i>I hereby certify that the well location shown on this plat was plotted from field notes of actual surveys made by me or under my supervision, and that the same is true and correct to the best of my belief.</i></p> <p align="right">FEB. 19, 1997</p> <p>Date Surveyed _____ DMCC</p> <p>Signature & Seal of Professional Surveyor</p> <p align="right"><i>Ronald J. Eidson</i> 2-25-97 87-11-0330</p>
	<p>Certificate No. JOHN W. WEST 676 RONALD J. EIDSON 3239 GARY EIDSON 12641</p>

EXHIBIT #1

B U P & CHOKE MANIFOLD

10"/900 Cameron SS Space Saver
3000# Working Pressure
3,000# Working Pressure Choke Manifold



2" CHOKE MANIFOLD EQUIPMENT

MARBOB ENERGY CORPORATION

Burch Keely Unit No. 841
1980' FSL and 2615' FEL
Section 24-17S-29E
Eddy County, New Mexico
Exhibit #1