

UNITED STATES
DEPARTMENT OF THE INTERIOR
BUREAU OF LAND MANAGEMENT

APPLICATION FOR PERMIT TO DRILL, DEEPEN, OR PLUG BACK

1a. TYPE OF WORK

DRILL ☒

DEEPEN ☐

PLUG BACK ☐

b. TYPE OF WELL

OIL WELL ☒

GAS WELL ☐

OTHER ☐

SINGLE ZONE ☐

MULTIPLE ZONE ☐

2. NAME OF OPERATOR

Marbob Energy Corporation 14049

3a. Area Code & Phone No.

505-748-3303

3. ADDRESS OF OPERATOR

P. O. BOX 227 Artesia, NM 88210

4. LOCATION OF WELL (Report location clearly and in accordance with any State requirements.)

At surface 685 FNL 1305 FWL

At proposed prod. zone

SAME

UNIT D

APR 15 1997

14. DISTANCE IN MILES AND DIRECTION FROM NEAREST TOWN OR POST OFFICE*

EAST OF ARTESIA ON HWY 82 APPROXIMATELY 21.9 MILES

15. DISTANCE FROM PROPOSED*

LOCATION TO NEAREST PROPERTY OR LEASE LINE, FT. (Also to nearest drlg. unit line, if any)

685'

16. NO. OF ACRES IN LEASE

640

17. NO. OF ACRES ASSIGNED TO THIS WELL

40

18. DISTANCE FROM PROPOSED LOCATION* TO NEAREST WELL, DRILLING, COMPLETED, OR APPLIED FOR, ON THIS LEASE, FT.

19. PROPOSED DEPTH

4800'

20. ROTARY OR CABLE TOOLS

ROTARY

21. ELEVATIONS (Show whether DF, RT, GR, etc.)

3596.2

22. APPROX. DATE WORK WILL START*

MAY 1, 1997

PROPOSED CASING AND CEMENTING PROGRAM

HOLE SIZE	CASING SIZE	WEIGHT/FOOT	GRADE	THREAD TYPE	SETTING DEPTH	QUANTITY OF CEMENT
12 1/4"	8 5/8"	24#	J-55	LTC	350'	300 SX
7 7/8"	5 1/2"	17#	J-55	LTC	4800'	1100 SX

PAY ZONE WILL BE SELECTIVELY PERFORATED AND STIMULATED AS NEEDED FOR OPTIMUM PRODUCTION.

ATTACHED ARE

1. LOCATION & ACREAGE DEDICATION PLAT
2. SUPPLEMENTAL DRILLING DATA
3. SURFACE USE PLAN

RECEIVED

MAR 14 97

BLM
ROSWELL, NM

SEE MASTER SURFACE USE PLAN ON FILE AT BLM-ROSWELL.

NOTE: THIS A.P.D. WAS PREVIOUSLY APPROVED AS THE KEELY A FEDERAL #34.

Posted 10-1
NL & API
4-25-97

IN ABOVE SPACE DESCRIBE PROPOSED PROGRAM: If proposal is to deepen or plug back, give data on present productive zone and proposed new productive zone. If proposal is to drill or deepen directionally, give pertinent data on subsurface locations and measured and true vertical depths. Give blowout preventer program, if any.

SIGNED

Phonda Nelson

TITLE Production Clerk

DATE 3/13/97

(This space for Federal or State office use)

PERMIT NO.

(ORIG. SGD.) TONY L. FERGUSON

APPROVAL DATE

APPROVED BY

ADM, MINERALS

CONDITIONS OF APPROVAL, IF ANY:

TITLE

DATE

4-4-97

*See Instructions On Reverse Side

OIL CONSERVATION DIVISION

P.O. Box 2088
Santa Fe, New Mexico 87504-2088

DISTRICT I

P.O. Box 1980, Hobbs, NM 88240

DISTRICT II

P.O. Drawer DD, Artesia, NM 88210

DISTRICT III

1000 Rio Brazos Rd., Aztec, NM 87410

WELL LOCATION AND ACREAGE DEDICATION PLAT

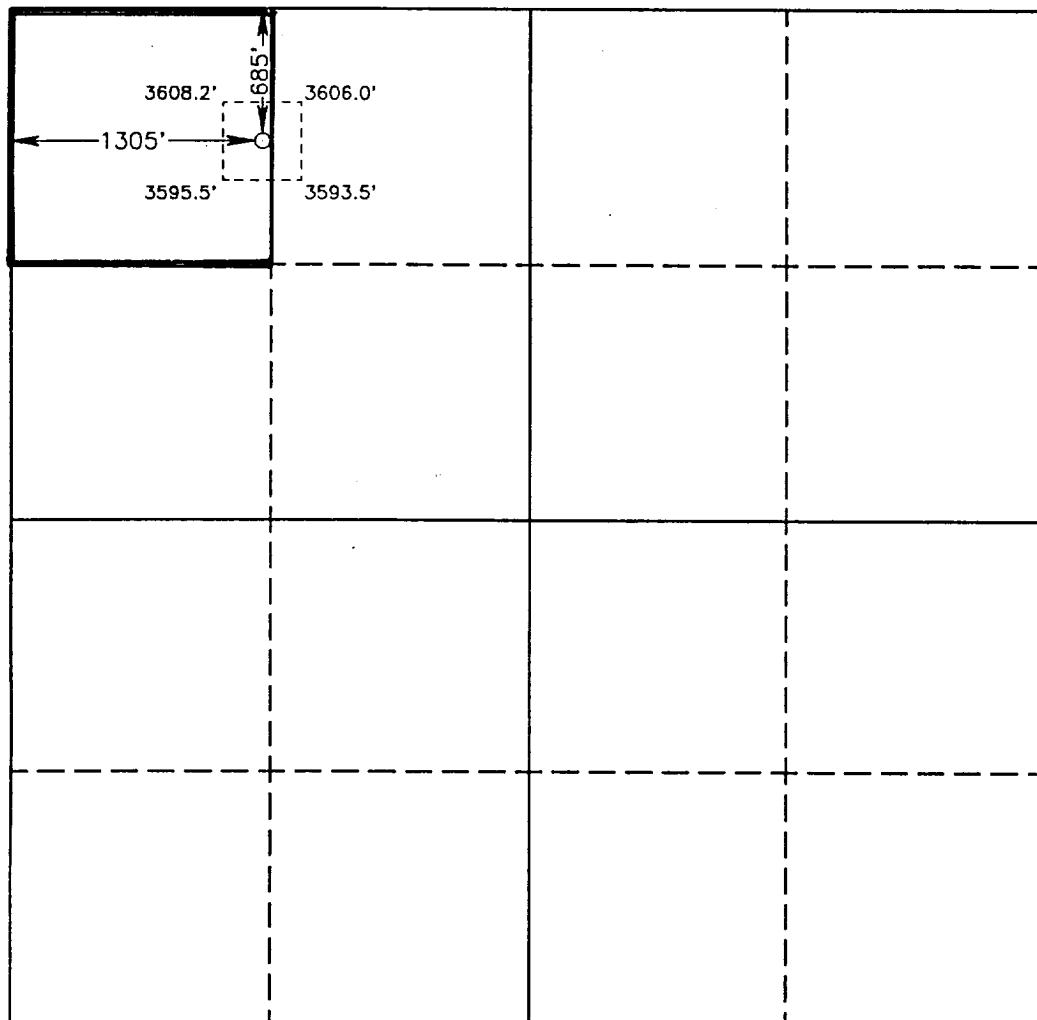
All Distances must be from the outer boundaries of the section

Operator MARBOB ENERGY CORP.		OGRID: 14049	Lease BURCH KEELY UNIT NO.: 6497		Well No. 849
Unit Letter D	Section 24	Township 17 SOUTH	Range 29 EAST	NMPM	County EDDY
Actual Footage Location of Well: 685 feet from the NORTH line and 1305 feet from the WEST line					
Ground Level Elev. 3596.2'	Producing Formation Grayburg San Andres		Pool CODE: 28509 Grbg Jackson SR Q Grbg SA		Dedicated Acreage: 40 Acres

1. Outline the acreage dedicated to the subject well by colored pencil or hachure marks on the plat below.
2. If more than one lease is dedicated to the well, outline each and identify the ownership thereof (both as to working interest and royalty).
3. If more than one lease of different ownership is dedicated to the well, have the interest of all owners been consolidated by communization, unitization, force-pooling, etc.?
☐ Yes ☐ No If answer is "yes" type of consolidation _____

If answer is "no" list of owners and tract descriptions which have actually been consolidated. (Use reverse side of this form necessary.)

No allowable will be assigned to the well unit all interests have been consolidated (by communization, unitization, forced-pooling, otherwise) or until a non-standard unit, eliminating such interest, has been approved by the Division.



OPERATOR CERTIFICATION

I hereby certify the the information contained herein is true and complete to the best of my knowledge and belief.

Signature

Printed Name

Rhonda Nelson

Position

Production Clerk

Company

Marbob Energy Corporation

Date

July 7, 1993

SURVEYOR CERTIFICATION

I hereby certify that the well location shown on this plat was plotted from field notes of actual surveys made by me or under my supervision, and that the same is true and correct to the best of my knowledge and belief.

Date Surveyed

MAY 29, 1993

Signature & Seal of Professional Surveyor

Certification No. 7917

JOHN W. WEST, 876

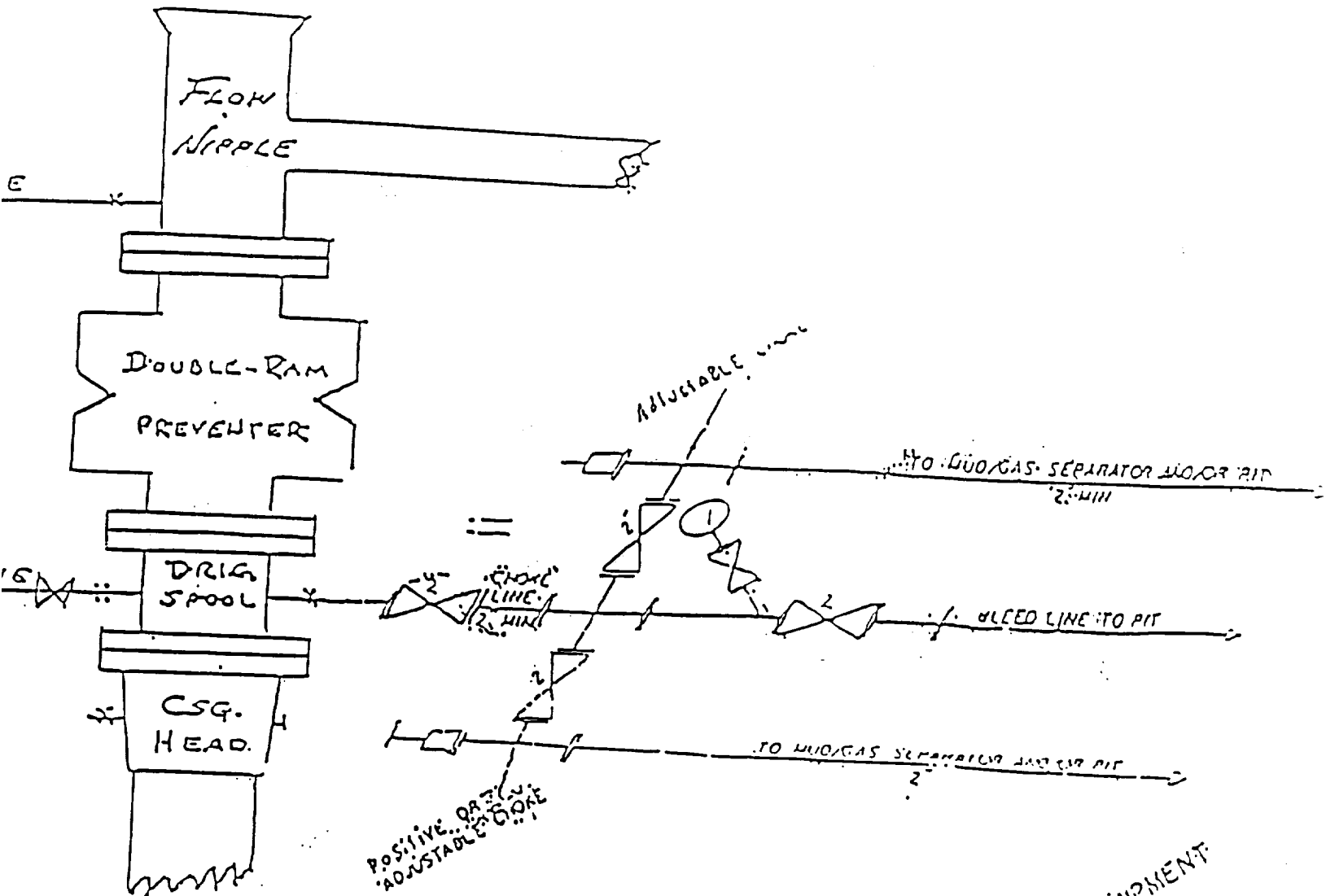
ESSIE B. EIDSON, 3239

GARY L. JONES, 7977

93-11-0945

B O P & CHOKE MANIFOLD

10"/900 Cameron SS Space Saver
 3000# Working Pressure
 3.000# Working Pressure Choke Manifold



Marbob Energy Corporation

Burch Keely Unit No. 849
 685' FNL and 1305' FWL
 Section 24-17S-29E
 Eddy County, New Mexico
 Exhibit #1

214 CHOKE MANIFOLD EQUIPMENT

Attachment to Exhibit #1
NOTES REGARDING THE BLOWOUT PREVENTERS

1. Drilling nipple to be so constructed that it can be removed without use of a welder through rotary table opening, with minimum I.D. equal to preventer bore.
2. Wear ring to be properly installed in head.
3. Blow out preventer and all fittings must be in good condition, 3000 psi W.P. minimum.
4. All fittings to be flanged.
5. Safety valve must be available on rig floor at all times with proper connections, valve to be full bore 3000 psi W.P. minimum.
6. All choke and fill lines to be securely anchored, especially ends of choke lines.
7. Equipment through which bit must pass shall be at least as large as the diameter of the casing being drilled through.
8. Kelly cock on kelly.
9. Extension wrenches and hand wheels to be properly installed.
10. Blow out preventer control to be located as close to driller's position as feasible.
11. Blow out preventer closing equipment to include minimum 40 gallon accumulator, two independent sources of pump power on each closing unit installation, and meet all API specifications.