

FIGURE K6-1. The schematic sketch of an accumulator system shows required and optional components.

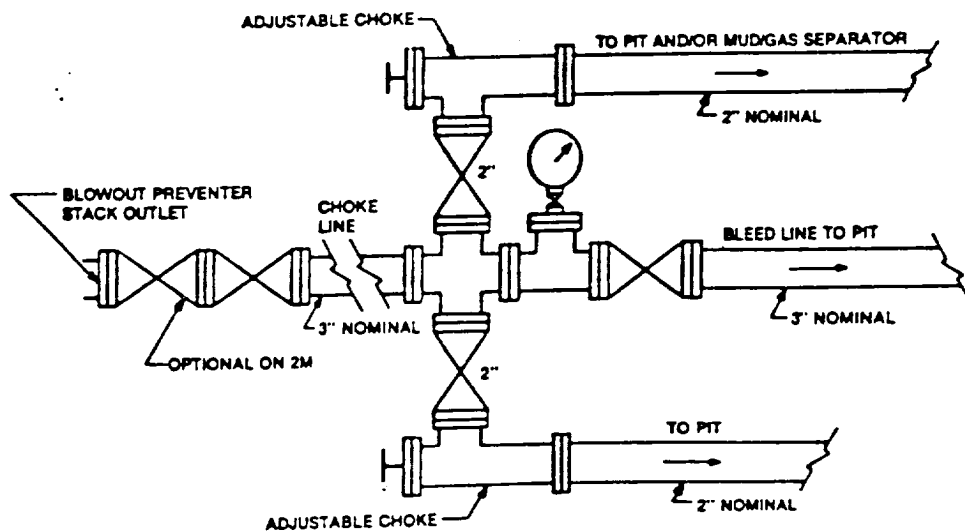


FIGURE K4-1. Typical choke manifold assembly for 2M and 3M rated working pressure service — surface installation.

EXHIBIT "1-E"
CHOKE MANIFOLD & CLOSING UNIT

PENWELL ENERGY, INC.
ORE IDA "14" FEDERAL #14
1980' FSL & 660' FWL SEC.14
T24S-R29E EDDY CO. NM