

UNITED STATES
DEPARTMENT OF THE INTERIOR
BUREAU OF LAND MANAGEMENT

APPLICATION FOR PERMIT TO DRILL OR DEEPEN

1a. TYPE OF WORK

DRILL ☒

DEEPEN ☐

b. TYPE OF WELL

OIL WELL ☒

GAS WELL ☐

OTHER ☐

SINGLE ZONE ☒

MULTIPLE ZONE ☐

2. NAME OF OPERATOR

Pogo Producing Company

17891

3. ADDRESS AND TELEPHONE NO.

P.O. Box 10340

4. LOCATION OF WELL (Report location clearly and in accordance with any State requirements.)*

At surface 660' FNL & 1525' FWL of Section 34

At proposed prod. zone

Same

UNORTHODOX LOCATION:

Unit C

Subject to
Like Approval
By State

14. DISTANCE IN MILES AND DIRECTION FROM NEAREST TOWN OR POST OFFICE.

3.5 miles southwest of Carlsbad, New Mexico

15. DISTANCE FROM PROPOSED*

LOCATION TO NEAREST

PROPERTY OR LEASE LINE, FT.

(Also to nearest rig. unit line, if any)

660'

16. NO. OF ACRES IN LEASE

80

17. NO. OF ACRES ASSIGNED
TO THIS WELL

40

18. DISTANCE FROM PROPOSED LOCATION*

TO NEAREST WELL DRILLING, COMPLETED,
OR APPLIED FOR, ON THIS LEASE, FT.

1st well

19. PROPOSED DEPTH

5300'

20. ROTARY OR CABLE TOOLS

Rotary

21. ELEVATIONS (Show whether DF, RT, GR, etc.)

3247' Ground Level

22. APPROX. DATE WORK WILL START*

Upon Approval

23.

PROPOSED CASING AND CEMENTING PROGRAM

SIZE OF HOLE	GRADE, SIZE OF CASING	WEIGHT PER FOOT	SETTING DEPTH	QUANTITY OF CEMENT
14-3/4"	10-3/4" H-40	32.75#	350'	250 sx (Circulate)
9-7/8"	7-5/8" J-55, N-80	26#	1500'	400 sx (Circulate)
6-3/4"	4-1/2" J-55	11.6#	5300'	1000 sx (Circulate)

The Operator proposes to drill to a depth sufficient to test the Delaware and Bone Springs for oil. Specific programs are outlined in the following attachments:

DRILLING PROGRAM

SURFACE USE AND OPERATING PLAN

EXHIBIT "A" - ROAD MAP

EXHIBIT "B" - EXISTING WELL MAP

EXHIBIT "C" - LOCATION AND DEDICATION PLAT

EXHIBIT "C-1" - TOPO MAP

EXHIBIT "D" - DRILLING RIG LAYOUT

EXHIBIT "E" - 3M BOP EQUIPMENT

Posted ID-1
NL & API
7-3-97

IN ABOVE SPACE DESCRIBE PROPOSED PROGRAM: If proposal is to deepen, give data on present productive zone and proposed new productive zone. If proposal is to drill or deeper directionally, give pertinent data on subsurface locations and measured and true vertical depths. Give blowout preventer program, if any.

24.

SIGNED

James M. C. Raley

TITLE

Agent

DATE

5/25/97

(This space for Federal or State office use)

PERMIT NO.

APPROVAL DATE

Application approval does not warrant or certify that the applicant holds legal or equitable title to those rights in the subject lease which would entitle the applicant to conduct operations thereon.
CONDITIONS OF APPROVAL, IF ANY:

APPROVED BY

TITLE

DATE

5-26-97

*See Instructions On Reverse Side

Title 18 U.S.C Section 1001, makes it a crime for any person knowingly and willfully to make to any department or agency of the United States any false, fictitious or fraudulent statements or representations as to any matter within its jurisdiction.

DISTRICT I
P.O. Box 1980, Hobbs, NM 88241-1980

State of New Mexico
Energy, Minerals and Natural Resources Department

Form C-102
Revised February 10, 1994
Submit to Appropriate District Office
State Lease - 4 Copies
Fee Lease - 3 Copies

DISTRICT II
P.O. Drawer DD, Artesia, NM 88211-0719

DISTRICT III
1000 Rio Brazos Rd., Aztec, NM 87410

OIL CONSERVATION DIVISION

P.O. Box 2088
Santa Fe, New Mexico 87504-2088

DISTRICT IV
P.O. Box 2088, Santa Fe, NM 87504-2088

☐ AMENDED REPORT

WELL LOCATION AND ACREAGE DEDICATION PLAT

API Number	Pool Code	Pool Name Undesignated (Bone Springs)
Property Code	Property Name JET FEDERAL	Well Number 1
OGRID No. 017891	Operator Name POGO PRODUCING COMPANY	Elevation 3247

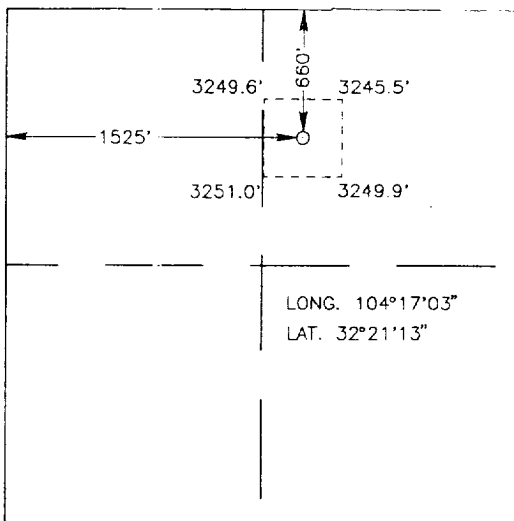
Surface Location

UL or lot No. C	Section 34	Township 22 S	Range 26 E	Lot Idn	Feet from the 660	North/South line NORTH	Feet from the 1525	East/West line WEST	County EDDY
--------------------	---------------	------------------	---------------	---------	----------------------	---------------------------	-----------------------	------------------------	----------------

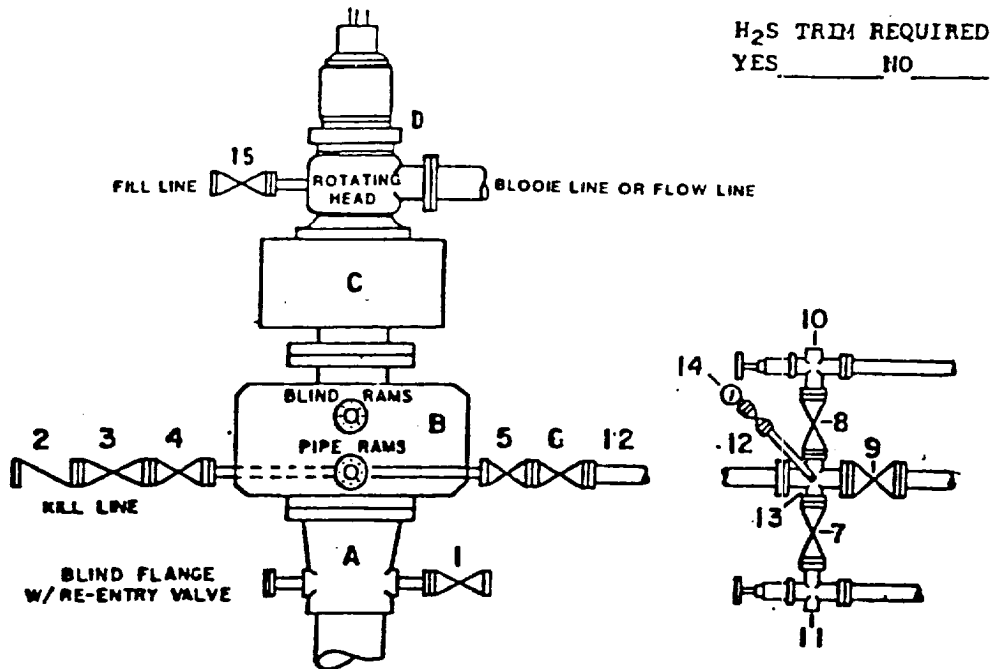
Bottom Hole Location If Different From Surface

UL or lot No.	Section	Township	Range	Lot Idn	Feet from the	North/South line	Feet from the	East/West line	County
Dedicated Acres	Joint or Infill	Consolidation Code	Order No.						

NO ALLOWABLE WILL BE ASSIGNED TO THIS COMPLETION UNTIL ALL INTERESTS HAVE BEEN CONSOLIDATED
OR A NON-STANDARD UNIT HAS BEEN APPROVED BY THE DIVISION

 <p>LONG. 104°17'03" LAT. 32°21'13"</p>	<p><u>EXHIBIT "C"</u></p>	<p>OPERATOR CERTIFICATION</p> <p>I hereby certify the the information contained herein is true and complete to the best of my knowledge and belief.</p> <p><i>James M.C. Ritchie, Jr.</i> Signature James M.C. Ritchie, Jr. Printed Name Agent Title 05/25/97 Date</p> <p>SURVEYOR CERTIFICATION</p> <p>I hereby certify that the well location shown on this plat was plotted from field notes of actual surveys made by me or under my supervision, and that the same is true and correct to the best of my belief.</p> <p>APRIL 17, 1997 Date Surveyed JLP Signature & Seal of Professional Surveyor <i>Ronald J. Eidson</i> 4-18-97 W.O. Num. 87-11-0702 Certificate No. JOHN W. WEST, 676 RONALD J. EIDSON, 3239 GARY G. EIDSON, 12841</p>
--	---------------------------	---

DRILLING CONTROL CONDITION III-B 3000 PSI WP



DRILLING CONTROL

MATERIAL LIST - CONDITION III - B

- | | |
|----------------|---|
| A | Wellhead |
| B | 3000# W.P. Dual ram type preventer, hydraulic operated with 1" steel, 3000# W.P. control lines (where sub-structure height is adequate, 2 - 3000# W.P. single ram preventers may be utilized with 3000# W.P. drilling spool with 2" minimum flanged outlet for kill line and 3" minimum flanged outlet for choke line. The drilling spool is to be installed below the single ram type preventers). |
| C | 3000# W.P. Annular Preventer with 1" steel, 3000# W.P. control lines. |
| D | Rotating Head with fill up outlet and extended Blowie line. |
| 1,2,4,
7,8, | 2" minimum 3000# W.P. flanged full opening steel gate valve, or Halliburton Lo Torc Plug valve. |
| 2 | 2" minimum 3000# W.P. back pressure valve. |
| 5,6,9 | 3" minimum 3000# W.P. flanged full opening steel gate valve, or Halliburton Lo Torc Plug valve. |
| 12 | 3" minimum Schedule 80, Grade B, seamless line pipe. |
| 13 | 2" minimum x 3" minimum 3000# W.P. flanged cross. |
| 10,11 | 2" minimum 3000# W.P. adjustable choke bodies. |
| 14 | Cameron Mud Gauge or equivalent (location optional in Choke line). |
| 15 | 2" minimum 3000# W.P. flanged or threaded full opening steel gate valve, or Halliburton Lo Torc Plug valve. |

SCALE	DATE	EST. NO	DRG NO
DRAWN BY			
CHECKED BY			
APPROVED BY			

EXHIBIT E