

## N.M. Oil Cons. Division

811 S. 1ST ST.

ARTESIA, NM 88210-2834

Form 3160-3  
(July 1992)SUBMIT IN TRIPLICATE\*  
(Other instructions on  
reverse side)FORM APPROVED  
OMB NO. 1004-0136  
Expires: February 28, 1995UNITED STATES  
DEPARTMENT OF THE INTERIOR

BUREAU OF LAND MANAGEMENT 3-13-97 ROM

## APPLICATION FOR PERMIT TO DRILL OR DEEPEN

## 1a. TYPE OF WORK

DRILL ☒DEEPEN ☐

## b. TYPE OF WELL

OIL  
WELL ☒GAS  
WELL ☐

OTHER

SINGLE  
ZONE ☒MULTIPLE  
ZONE ☐

## 2. NAME OF OPERATOR

Pogo Producing Company

## 3. ADDRESS AND TELEPHONE NO.

P.O. Box 10340, Midland, Texas 79702

## 4. LOCATION OF WELL (Report location clearly and in accordance with any State requirements.)\*

At surface

660' FNL &amp; 1300' FWL of Section 21

At proposed prod. zone

Same

UNORTHODOX LOCATION.

SUBJECT TO  
LIKE APPROVAL  
BY STATE

## 14. DISTANCE IN MILES AND DIRECTION FROM NEAREST TOWN OR POST OFFICE\*

5 miles east southeast of Loving, N.M.

15. DISTANCE FROM PROPOSED  
LOCATION TO NEAREST  
PROPERTY OR LEASE LINE, FT.  
(Also to nearest drlg. unit line, if any)

660'

## 16. NO. OF ACRES IN LEASE

160

17. NO. OF ACRES ASSIGNED  
TO THIS WELL

40

18. DISTANCE FROM PROPOSED LOCATION\*  
TO NEAREST WELL, DRILLING, COMPLETED,  
OR APPLIED FOR, ON THIS LEASE, FT.

3500'

## 19. PROPOSED DEPTH

6,900'

## 20. ROTARY OR CABLE TOOLS

Rotary

## 21. ELEVATIONS (Show whether DF, RT, GR, etc.)

2918' Ground Level

CARLSBAD CONTROLLED WATER BASIN

## APPROX. DATE WORK WILL START\*

Upon Approval

## 23.

## PROPOSED CASING AND CEMENTING PROGRAM

SIZE OF HOLE	GRADE, SIZE OF CASING	WEIGHT PER FOOT	SETTING DEPTH	QUANTITY OF CEMENT
14-3/4"	10-3/4"	32.75# H-40	500'	WITNESS 500 sx (circ)
9-7/8"	7-5/8"	26.40# J-55	2900'	750 sx (circ)
6-3/4"	4-1/2"	11.60# J-55	6900'	950 sx (1900'±)

The operator proposes to drill to a depth sufficient to test the Delaware and the Bone Springs formation for oil & gas. Specific programs are outlined in the following attachments:

DRILLING PROGRAMSURFACE USE AND OPERATING PLAN

EXHIBIT A - ROAD MAP

EXHIBIT B - EXISTING WELL MAP

EXHIBIT C - LOCATION AND ACREAGE DEDICATION PLAT

EXHIBIT C-1 TOPO MAP

EXHIBIT D - DRILLING AND RIG LAYOUT

EXHIBIT E - 3M BOP EQUIPMENT

APPROVAL SUBJECT TO  
GENERAL REQUIREMENTS AND  
SPECIAL STIPULATIONS  
ATTACHED

RECEIVED

MAR 11 97

BLM  
ROSWELL, NMacc  
4/17/97

IN ABOVE SPACE DESCRIBE PROPOSED PROGRAM: If proposal is to deepen, give data on present productive zone and proposed new productive zone. If proposal is to drill or deepen directionally, give pertinent data on subsurface locations and measured and true vertical depths. Give blowout preventer program, if any.

## 24.

SIGNED

TITLE

Agent

DATE

03/08/97

(This space for Federal or State office use)

PERMIT NO.

APPROVAL DATE

Application approval does not warrant or certify that the applicant holds legal or equitable title to those rights in the subject lease which would entitle the applicant to conduct operations thereon.  
CONDITIONS OF APPROVAL, IF ANY:

APPROVED BY

TITLE

ADM. MINERALS

DATE

7/17/97

\*See Instructions On Reverse Side

Title 18 U.S.C. Section 1001, makes it a crime for any person knowingly and willfully to make to any department or agency of the United States any false, fictitious or fraudulent statements or representations as to any matter within its jurisdiction.

DISTRICT I  
P.O. Box 1980, Hobbs, NM 88241-1980

DISTRICT II  
P.O. Drawer DD, Artesia, NM 88211-0719

DISTRICT III  
1000 Rio Brazos Rd., Artec, NM 87410

DISTRICT IV  
P.O. Box 2088, Santa Fe, NM 87504-2088

State of New Mexico  
Energy, Minerals and Natural Resources Department

Form C-102  
Revised February 10, 1994  
Submit to Appropriate District Office  
State Lease - 4 Copies  
Fee Lease - 3 Copies

OIL CONSERVATION DIVISION

P.O. Box 2088  
Santa Fe, New Mexico 87504-2088

☐ AMENDED REPORT

WELL LOCATION AND ACREAGE DEDICATION PLAT

API Number	Pool Code	Pool Name
		Undesignated (Bone Springs)
Property Code	Property Name	Well Number
	CEDAR CANYON 21 FEDERAL	4
OGRID No.	Operator Name	Elevation
017891	POGO PRODUCING COMPANY	2918

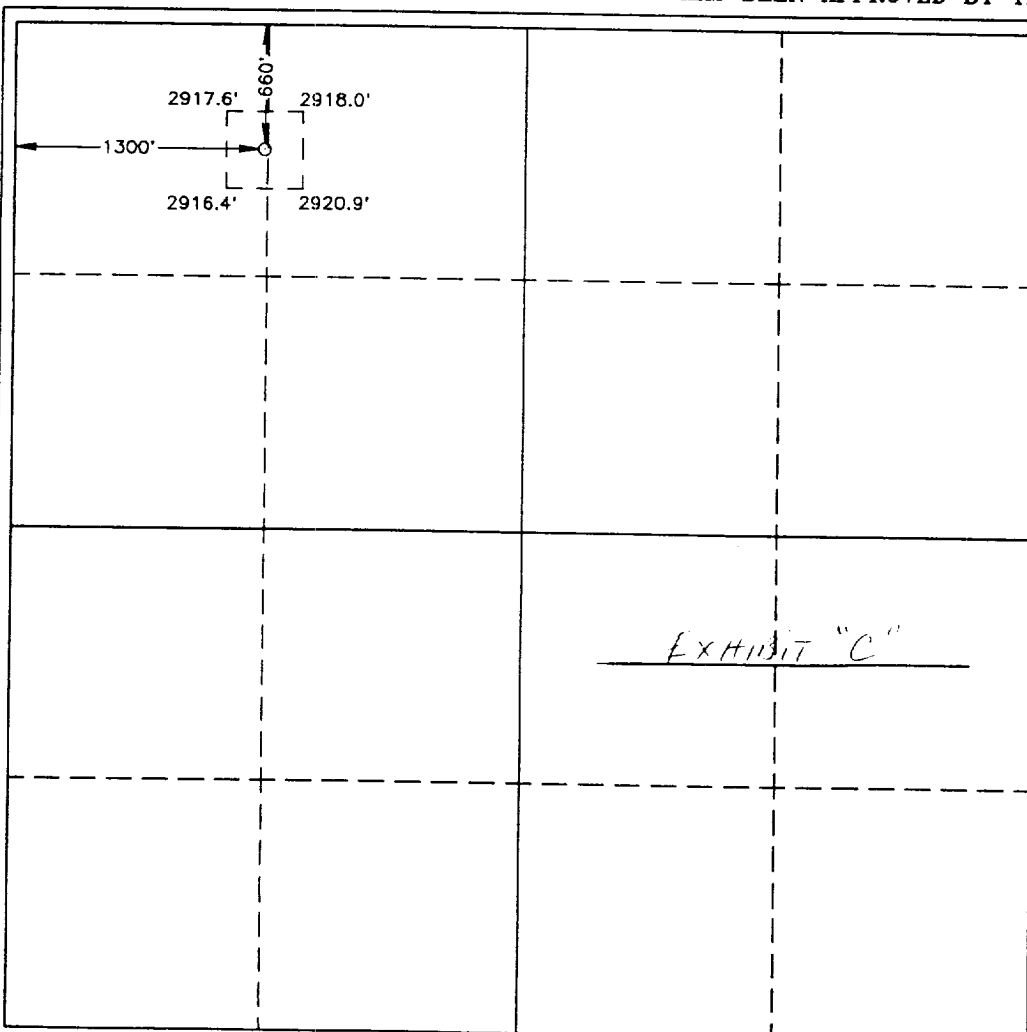
Surface Location

UL or lot No.	Section	Township	Range	Lot Idn	Feet from the	North/South line	Feet from the	East/West line	County
D	21	24 S	29 E		660	NORTH	1300	WEST	EDDY

Bottom Hole Location If Different From Surface

UL or lot No.	Section	Township	Range	Lot Idn	Feet from the	North/South line	Feet from the	East/West line	County
Dedicated Acres	Joint or Infill	Consolidation Code	Order No.						

NO ALLOWABLE WILL BE ASSIGNED TO THIS COMPLETION UNTIL ALL INTERESTS HAVE BEEN CONSOLIDATED  
OR A NON-STANDARD UNIT HAS BEEN APPROVED BY THE DIVISION



OPERATOR CERTIFICATION

I hereby certify the the information  
contained herein is true and complete to the  
best of my knowledge and belief.

Signature

James M.C. Ritchie, Jr.

Printed Name

Agent

Title

03/08/97

Date

SURVEYOR CERTIFICATION

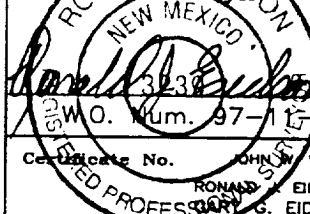
I hereby certify that the well location shown  
on this plat was plotted from field notes of  
actual surveys made by me or under my  
supervision and that the same is true and  
correct to the best of my belief.

FEBRUARY 27, 1997

Date Surveyed

JLP

Signature & Seal of  
Professional Surveyor



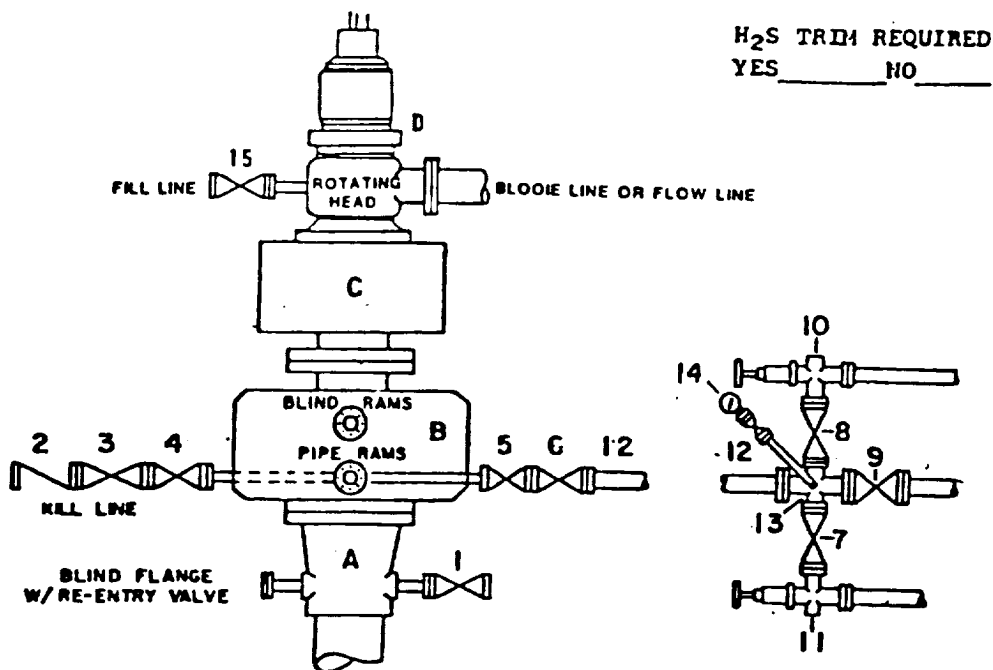
Certificate No.

JOHN W. WEST, 676

RONALD A. EIDSON, 3239

GARY G. EIDSON, 12641

# **DRILLING CONTROL** **CONDITION III-B 3000 PSI WP**



H<sub>2</sub>S TRIM REQUIRED  
 YES \_\_\_\_\_ NO \_\_\_\_\_

## DRILLING CONTROL

### MATERIAL LIST - CONDITION III - B

- |                |   |
|----------------|---|
| A              | Wellhead  |
| B              | 3000# W.P. Dual ram type preventer, hydraulic operated with 1" steel, 3000# W.P. control lines (where sub-structure height is adequate, 2 - 3000# W.P. single ram preventers may be utilized with 3000# W.P. drilling spool with 2" minimum flanged outlet for kill line and 3" minimum flanged outlet for choke line. The drilling spool is to be installed below the single ram type preventers). |
| C              | 3000# W.P. Annular Preventer with 1" steel, 3000# W.P. control lines.   |
| D              | Rotating Head with fill up outlet and extended Bore line.   |
| 1,3,4,<br>7,8, | 2" minimum 3000# W.P. flanged full opening steel gate valve, or Halliburton Lo Torc Plug valve.   |
| 2              | 2" minimum 3000# W.P. back pressure valve.  |
| 5,6,9          | 3" minimum 3000# W.P. flanged full opening steel gate valve, or Halliburton Lo Torc Plug valve.   |
| 12             | 3" minimum Schedule 80, Grade B, seamless line pipe.  |
| 13             | 2" minimum x 3" minimum 3000# W.P. flanged cross.   |
| 10,11          | 2" minimum 3000# W.P. adjustable choke bodies.  |
| 14             | Cameron Mud Gauge or equivalent (location optional in Choke line).  |
| 15             | 2" minimum 3000# W.P. flanged or threaded full opening steel gate valve, or Halliburton Lo Torc Plug valve.   |

SCALE	DATE	EST NO	DWG NO
DRAWN BY			
CHECKED BY			
APPROVED BY			

**EXHIBIT E**