

Form 3160-3
(July 1992)SUBMIT IN DUPLICATE
ARTESIA, NM 88210-2834
on reverse sideFORM APPROVED
OMB NO. 1004-0136
Expires: February 28, 1995UNITED STATES
DEPARTMENT OF THE INTERIOR
BUREAU OF LAND MANAGEMENT

RECEIVED

APPLICATION FOR PERMIT TO DRILL OR DEEPEN

1a. TYPE OF WORK

DRILL ☒DEEPEN ☐

b. TYPE OF WELL

OIL

WELL ☒

GAS

WELL ☐

OTHER

2. NAME OF OPERATOR

LOUIS DREYFUS NATURAL GAS CORPORATION (GENE SIMER)

3. ADDRESS AND TELEPHONE NO.

309 SOUTH HALAGUENO STREET CARLSBAD, NEW MEXICO 88220

Phone 505-885-1313

4. LOCATION OF WELL (Report location clearly and in accordance with any State requirements.)

330' FSL & 330' FWL SEC. 17 T23S-R30E EDDY CO. NM
At proposed prod. zone SAME

14. DISTANCE IN MILES AND DIRECTION FROM NEAREST TOWN OR POST OFFICE*

Approximately 10 miles East of Loving New Mexico.

15. DISTANCE FROM PROPOSED*

LOCATION TO NEAREST
PROPERTY OR LEASE LINE, FT.
(Also to nearest drlg. unit line, if any)

330'

16. NO. OF ACRES IN LEASE

640

17. NO. OF ACRES ASSIGNED
TO THIS WELL

40

18. DISTANCE FROM PROPOSED LOCATION*
TO NEAREST WELL, DRILLING, COMPLETED,
OR APPLIED FOR, ON THIS LEASE, FT.

NA

19. PROPOSED DEPTH

7600'

20. ROTARY OR CABLE TOOLS

ROTARY

21. ELEVATIONS (Show whether DF, RT, GR, etc.)

3137' GR.

22. APPROX. DATE WORK WILL START*

As soon as approved

23.

PROPOSED CASING AND CEMENTING PROGRAM

SIZE OF HOLE	GRADE, SIZE OF CASING	WEIGHT PER FOOT	SETTING DEPTH	QUANTITY OF CEMENT
25"	Conductor 20"	NA	40'	Cement to surface with Redi-mix.
17½"	H-40 13 3/8"	48	400'	400 Sx. Circ. WITNESS surface
12½"	J-55 8 5/8"	24 & 32	3400'	1000 Sx. circ. WITNESS surface
7 7/8"	J-55 5½"	15.5 & 17	7600'	1100 Sx. Tie Back Top Cement 3100'

SECRETARY'S POTASH

CARLSBAD CONTROLLED WATER BASIN

R-111-P POTASH

1. Drill 25" hole to 40'. Set 40' of 20" conductor pipe. Cement to surface with Redi-mix.
2. Drill 17½" hole to 400'. Run and set 400' of 13 3/8" H-40 48# ST&C casing. Cement with 400 Sx Class "C" + 2% CaCl, circulate cement to surface.
3. Drill 12½" hole to 3400'. Run and set 3400' of 8 5/8" J-55 24 & 32 # ST&C casing. Cement/ 800 Sx. of Class "C" Halco Light + additives, tail in with 200 Sx. of Class "C" + 2% CaCl, circulate cement to surface.
4. Drill 7 7/8" hole to 7600'. Run and set 7600' of 5½" J-55 15.5 & 17# LT&C casing. Cement in 2 stages, DV tool at 5000' ±. Cement 1st stage with 300 Sx. of Halco Light tail in with 200 Sx. of Class "H" + additives, 2nd stage with 1000 Sx. of Halco Light tail in with 200 Sx. of Class "H" + additives, tie back to 3100'.

APPROVAL SUBJECT TO
GENERAL REQUIREMENTS AND
SPECIAL STIPULATIONS

IN ABOVE SPACE DESCRIBE PROPOSED PROGRAM: If proposal is to deepen, give data on present productive zone and proposed productive zone. If proposal is to drill or deepen directionally, give pertinent data on subsurface locations and measured and true vertical depths. Give blowout preventer program, if any.

24.

SIGNED

Joel Janiera

TITLE

Agent

DATE

06/30/97

(This space for Federal or State office use)

PERMIT NO.

APPROVAL DATE

Application approval does not warrant or certify that the applicant holds legal or equitable title to those rights in the subject lease which would entitle the applicant to conduct operations thereon.
CONDITIONS OF APPROVAL, IF ANY:

APPROVED BY

Richard A. Whitley

TITLE

Acting State Director

DATE

7-30-97

*See Instructions On Reverse Side

District I
PO Box 1980, Hobbs, NM 88241-1980
District II
PO Drawer DD, Artesia, NM 88211-0719
District III
1000 Rio Brazos Rd., Aztec, NM 87410
District IV
PO Box 2088, Santa Fe, NM 87504-2088

State of New Mexico
Energy, Minerals & Natural Resources Department

OIL CONSERVATION DIVISION
PO Box 2088
Santa Fe, NM 87504-2088

Form C-102
Revised February 10, 1994
Instructions on back
Submit to Appropriate District Office
State Lease - 4 Copies
Fee Lease - 3 Copies

☐ AMENDED REPORT

WELL LOCATION AND ACREAGE DEDICATION PLAT

API Number 31-015-29783		Pool Code 47545	Pool Name NASH DRAW-BRUSHY CANYON
Property Code	Property Name REMUDA "17" FEDERAL		Well Number 14
OGRID No. 25773	Operator Name LOUIS DREYFUS NATURAL GAS		Elevation 3137.

10 Surface Location

UL or lot no.	Section	Township	Range	Lot Idn	Feet from the	North/South line	Feet from the	East/West line	County
M	17	23-S	30-E		330	SOUTH	330	WEST	EDDY

11 Bottom Hole Location If Different From Surface

UL or lot no.	Section	Township	Range	Lot Idn	Feet from the	North/South line	Feet from the	East/West line	County

12 Dedicated Acres 40	13 Joint or Infill	14 Consolidation Code	15 Order No.
--------------------------	--------------------	-----------------------	--------------

NO ALLOWABLE WILL BE ASSIGNED TO THIS COMPLETION UNTIL ALL INTERESTS HAVE BEEN CONSOLIDATED
OR A NON-STANDARD UNIT HAS BEEN APPROVED BY THE DIVISION

<div data-bbox="129 1085 1071 2021"> <p>16</p> </div>	<div data-bbox="1088 1064 1542 2021"> <p>17 OPERATOR CERTIFICATION</p> <p>I hereby certify that the information contained herein is true and complete to the best of my knowledge and belief.</p> <p><i>Gene Simer</i></p> <p>Signature Gene Simer</p> <p>Printed Name Production Foreman</p> <p>Title 06-23-97</p> <p>Date</p> </div>		
	<div data-bbox="1088 1532 1542 2021"> <p>18 SURVEYOR CERTIFICATION</p> <p>I hereby certify that the well location shown on this plat was plotted from field notes of actual surveys made by me or under my supervision, and that the same is true and correct to the best of my belief.</p> <p>JUNE 23 1997</p> <p>Date of Survey</p> <p>Signature and Seal of Professional Surveyor:</p> <p>5412</p> <p>REGISTERED LAND SURVEYOR ENGINEER</p> <p>Certificate Number 5412</p> <p>NM PE&PS NO. 5412</p> </div>		

APPLICATION TO DRILL

LOUIS DREYFUS NATURAL GAS CORPORATION

REMUDA "17" FEDERAL # 14

UNIT "M"

SECTION 17

T23S-R30E

EDDY CO. NM

In response to questions asked under Section II B of Bulletin NTL-6 the following information is provided for your consideration:

1. Location: 330' FSL & 330' FWL SECTION 17 T23S-R30E EDDY CO. NM
2. Elevation above sea level: 3137' GR.
3. Geologic name of surface formation: Quaternary Aeolian Deposits.
4. Drilling tools and associated equipment: Conventional rotary drilling rig using fluid as a circulating medium for solids removal.
5. Proposed drilling depth: 7600'

6. Estimated tops of geological markers:

Rustler Anhydrite	350'	Cherry Canyon	4210'
Base of salt	3390'	Brushy Canyon	5510'
Delaware Sand	3420'	Bone Spring	7200'

7. Possible mineral bearing formation:

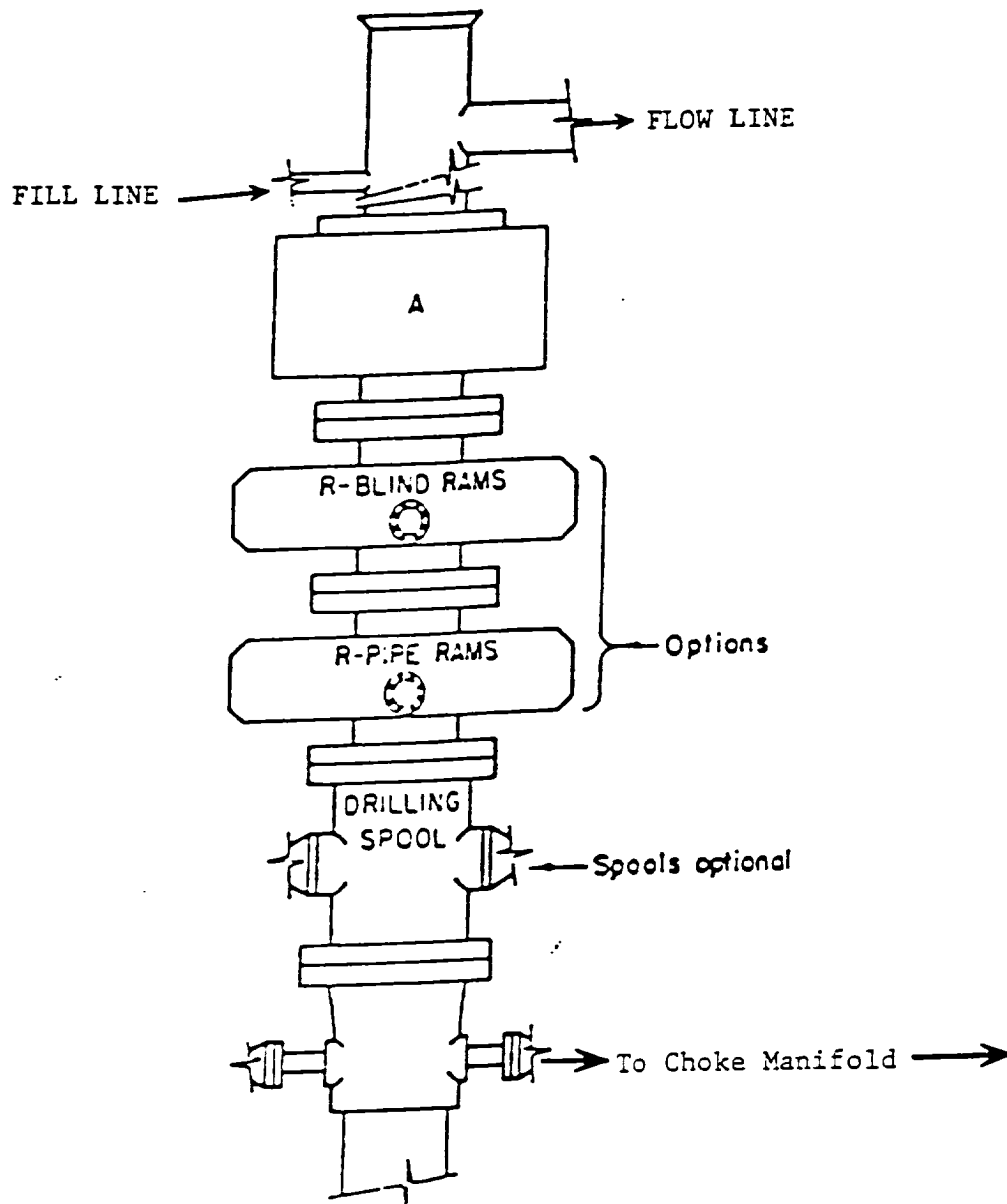
Brushy Canyon	Oil
Bone Spring	Oil

8. Casing program:

Hole size	Interval	OD casing	Weight	Thread	Collar	Grade
25"	0-40	20"	Conductor	NA	NA	NA
17½"	0-400'	13 3/8"	48	8-R	ST&C	H-40
12½"	0-3400'	8 5/8"	24 & 32	8-R	SR&C	J-55
7 7/8"	0-7600'	5½"	15.5 & 17	8-R	LT&C	J-55

(SOE JANICA - AGENT)

TALKED TO LOUIS DREYFUS CORP 7/18/97 :
 WE'VE RECOMMENDED 2000' 24 #, 1200' 32 # ON 8 5/8" (ON
 BOTTOM) INTERMEDIATE STRING DUE TO WARNING ON COLLAPSE
 S.F. - SEE SLIPS



ARRANGEMENT SRRA

900 Series
3000 PSI WP

EXHIBIT "E"
B.O.P. SKETCH TO BE USED ON
LOUIS DREYFUS NATURAL GAS CORP.
REMUDA "17" FEDERAL # 14
UNIT "M" SECTION 17
T23S-R30E EDDY CO. NM

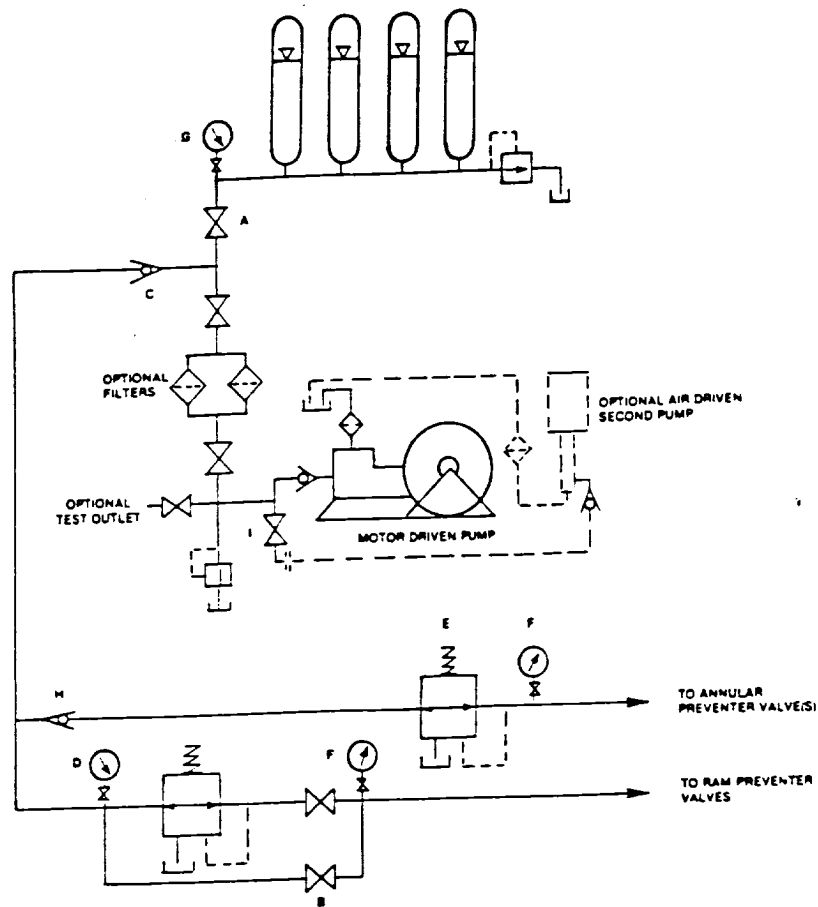


FIGURE K6-1. The schematic sketch of an accumulator system shows required and optional components.

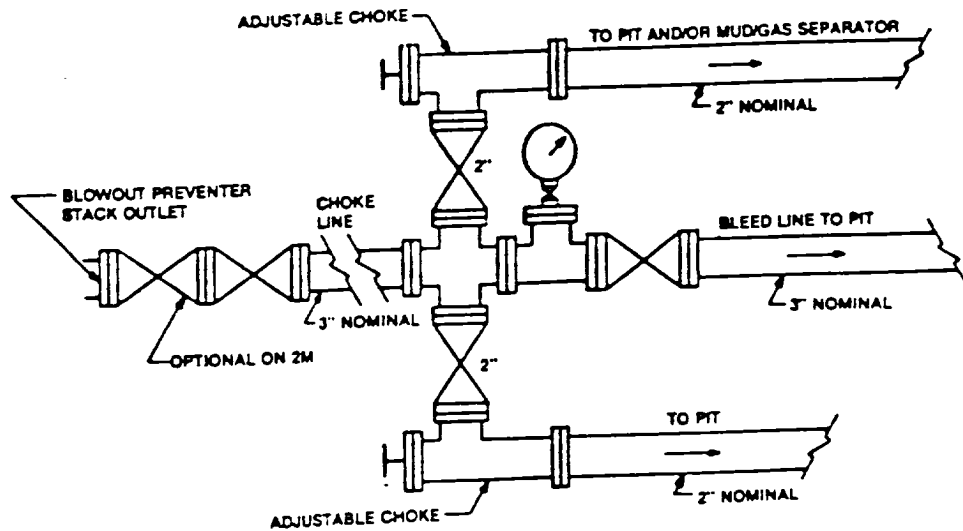


FIGURE K4-1. Typical choke manifold assembly for 2M and 3M rated working pressure service — surface installation.

EXHIBIT "E-1"
 CHOKE MANIFOLD & CLOSING UNIT
 LOUIS DREYFUS NATURAL GAS CORP.
 REMUDA "17" FEDERAL # 14
 UNIT "M" SECTION 17
 T23S-R30E EDDY CO. NM