

UNITED STATES
DEPARTMENT OF THE INTERIOR
BUREAU OF LAND MANAGEMENT

N. M. Oil Cons. Division
811 S. 1ST ST.
ARTESIA, NM 88210-2834
858
811 S. 1ST ST. (TRIPPLICATE)
ARTESIA, NM 88210-2834 (on reverse side)

FORM APPROVED
OMB NO. 1004-0136
Expires: February 28, 1995

APPLICATION FOR PERMIT TO DRILL OR DEEPEN

1a. TYPE OF WORK

DRILL ☒

DEEPEN ☐

b. TYPE OF WELL

OIL WELL ☒

GAS WELL ☐

OTHER ☐

2. NAME OF OPERATOR

BURNS OPERATING COMPANY

(REX ARMSTRONG)

3. ADDRESS AND TELEPHONE NO.

P.O. BOX 97525 WICHITA FALLS, TEXAS 79370

4. LOCATION OF WELL (Report location clearly and in accordance with any State requirements.)
At surface

351' FSL & 687' FEL SEC. 10 T17S-R31E EDDY CO. NM

At proposed prod. zone SAME

14. DISTANCE IN MILES AND DIRECTION FROM NEAREST TOWN OR POST OFFICE*

Approximately 8 miles East Northeast of Loco Hills New Mexico

15. DISTANCE FROM PROPOSED*
LOCATION TO NEAREST
PROPERTY OR LEASE LINE, FT.

351'

(Also to nearest drlg. unit line, if any)

18. DISTANCE FROM PROPOSED LOCATION*
TO NEAREST WELL, DRILLING, COMPLETED,
OR APPLIED FOR, ON THIS LEASE, FT.

300'

19. PROPOSED DEPTH

12,900'

20. ROTARY OR CABLE TOOLS

ROYARY

21. ELEVATIONS (Show whether DF, RT, GR, etc.)

3909' GR.

22. APPROX. DATE WORK WILL START*

As soon as approved

23.

PROPOSED CASING AND CEMENT

ROSWELL CONTROLLED WATER BASIN

SIZE OF HOLE	GRADE SIZE OF CASING	WEIGHT PER FOOT	SETTING DEPTH	QUANTITY OF CEMENT
25"	Conductor 20"	NA	40'	Cement to surface with Redi-mix
17 1/2"	J-55 13 3/8"	54.5	600'	650 Sx. circ cement to surface
12 1/4"	J-55-N-80 5/8"	32 & 24	5000'	2250 Sx. cir cement to surface
7 7/8"	S-95 N-80 5 1/2"	17	129000'	1150 Sx. top of cement 4800'

* CSG DESIGN CHANGE, SEE NEXT PAGE

SEE ATTACHMENT

APPROVAL SUBJECT TO
GENERAL REQUIREMENTS AND
SPECIAL STIPULATIONS
ATTACHED

RECEIVED
1997 AUG 19 P 12:09
BUREAU OF LAND MGMT.
LAND AND RESOURCE AREA

Post FD1
9-26-97
MPT &
New Doc

IN ABOVE SPACE DESCRIBE PROPOSED PROGRAM: If proposal is to deepen, give data on present productive zone and proposed new productive zone. If proposal is to drill or deepen directionally, give pertinent data on subsurface locations and measured and true vertical depths. Give blowout preventer program, if any.

24.

SIGNED

Joe T. Jones

TITLE Agent

DATE 08/12/97

(This space for Federal or State office use)

PERMIT NO.

APPROVAL DATE

Application approval does not warrant or certify that the applicant holds legal or equitable title to those rights in the subject lease which would entitle the applicant to conduct operations thereon.
CONDITIONS OF APPROVAL, IF ANY:

APPROVED BY

TITLE

DATE

9-11-97

*See Instructions On Reverse Side

1997
BUREAU OF LAND MGMT.
ROSWELL OFFICE

RECEIVED

1997 AUG 24 P 11:34

Attachment to form 3160-3 Application to drill or deepen for BURNS OPERATING COMPANY. ARCO "10" FEDERAL # 2 UNIT "P" SECTION 10 T17S-R31E, EDDY CO. NM.

BUREAU OF LAND MGMT.
ROSWELL OFFICE

1. Drill through unconsolidated sands, then run 20" conductor pipe if it is thought necessary. If conductor is run cement to surface with Redi-mix.
2. Drill 17½" hole to 600'. Run and set 600' of 13 3/8" 54.5# J-55 8-R ST&C casing. Cement with 300 Sx. of Halco Light + additives, tail in with 350 Sx. of Class "C" + 2% CaCl, circulate cement to surface.
3. Drill 12¼" hole to 5000'. Run and set 500' of N-80 32# ST&C, 2500' of 32# J-55 ST&C, 1800' of 24# J-55 ST&C, 200' of 32# J-55 ST&C casing. Cement with 500 Sx. of Class "C" Halco Light 1500 Sx. of 35/65 POZ, tail in with 250 Sx. of Class "C" neat. Circulate cement to surface.
4. Drill 7 7/8" hole to 12,900'. Run and set 12,900' of 5½" 17# S-95 & N-80 casing as follows: 1900' of 5½" 17# S-95, LT&C, 9400' of 5½" 17# N-80 LT&C, 1600' of 5½" 17# Buttress. Cement in two stages, cement 1st stage with 50 Sx. Class "H" 35/65 POZ tail in with 350 Sx. Class "H" 50/50 POZ, cement 2nd stage with 600 Sx. Class "H" 50/50 POZ, tail in with 100 Sx. Class "H" neat. Estimate top of cement 4700'.

CHANGE CSG DESIGN TO:

4200' 8 5/8" 32# J-55
800' 8 5/8" 32# HCK-55) INTERMEDIATE

1500' 5 1/2" 17# S-95
8900' 5 1/2" 17# N-80
2500' 5 1/2" 17# S-95) PROD

PER STEVE HANGAR 9/11/97 *Lee Babb*

WELL LOCATION AND ACREAGE DEDICATION PLAT

API Number 30-115-29826	Pool Code 96550	Pool Name WILDCAT DEVONIAN
Property Code	Property Name ARCO "10" FEDERAL	Well Number 2
OGRID No. 50589	Operator Name BURNS OPERATING COMPANY	Elevation 3909

Surface Location

UL or lot No.	Section	Township	Range	Lot Idn	Feet from the	North/South line	Feet from the	East/West line	County
P	10	17 S	31 E		351	SOUTH	687	EAST	EDDY

Bottom Hole Location If Different From Surface

UL or lot No.	Section	Township	Range	Lot Idn	Feet from the	North/South line	Feet from the	East/West line	County
Dedicated Acres	Joint or Infill	Consolidation Code		Order No.					
40									

NO ALLOWABLE WILL BE ASSIGNED TO THIS COMPLETION UNTIL ALL INTERESTS HAVE BEEN CONSOLIDATED
OR A NON-STANDARD UNIT HAS BEEN APPROVED BY THE DIVISION

<div style="border: 1px dashed black; height: 150px; margin-bottom: 10px;"></div> <div style="border: 1px dashed black; height: 150px;"></div>	<h3 style="text-align: center;">OPERATOR CERTIFICATION</h3> <p><i>I hereby certify the the information contained herein is true and complete to the best of my knowledge and belief.</i></p> <div style="margin-top: 20px;"> <div style="border-bottom: 1px solid black; width: 100%;"></div> <p style="text-align: center;">Joe T. Janica</p> </div> <div style="margin-top: 10px;"> <div style="border-bottom: 1px solid black; width: 100%;"></div> <p style="text-align: center;">Agent</p> </div> <div style="margin-top: 10px;"> <div style="border-bottom: 1px solid black; width: 100%;"></div> <p style="text-align: center;">Date</p> </div>
<div style="border: 1px dashed black; height: 150px; margin-bottom: 10px;"></div> <div style="border: 1px dashed black; height: 150px;"></div>	<h3 style="text-align: center;">SURVEYOR CERTIFICATION</h3> <p><i>I hereby certify that the well location shown on this plat was plotted from field notes of actual surveys made by me or under my supervision, and that the same is true and correct to the best of my belief.</i></p> <div style="text-align: center; margin-top: 20px;"> <p>AUGUST 12, 1997</p> </div> <div style="margin-top: 10px;"> <div style="border-bottom: 1px solid black; width: 100%;"></div> <p style="text-align: center;">Date Surveyed</p> </div> <div style="margin-top: 10px;"> <div style="border-bottom: 1px solid black; width: 100%;"></div> <p style="text-align: center;">Signature of Seal of Professional Surveyor</p> </div> <div style="margin-top: 10px;"> <div style="border-bottom: 1px solid black; width: 100%;"></div> <p style="text-align: center;">Certificate No.</p> </div>

NAD 27 NME
Y=670632 N
X=648253 E

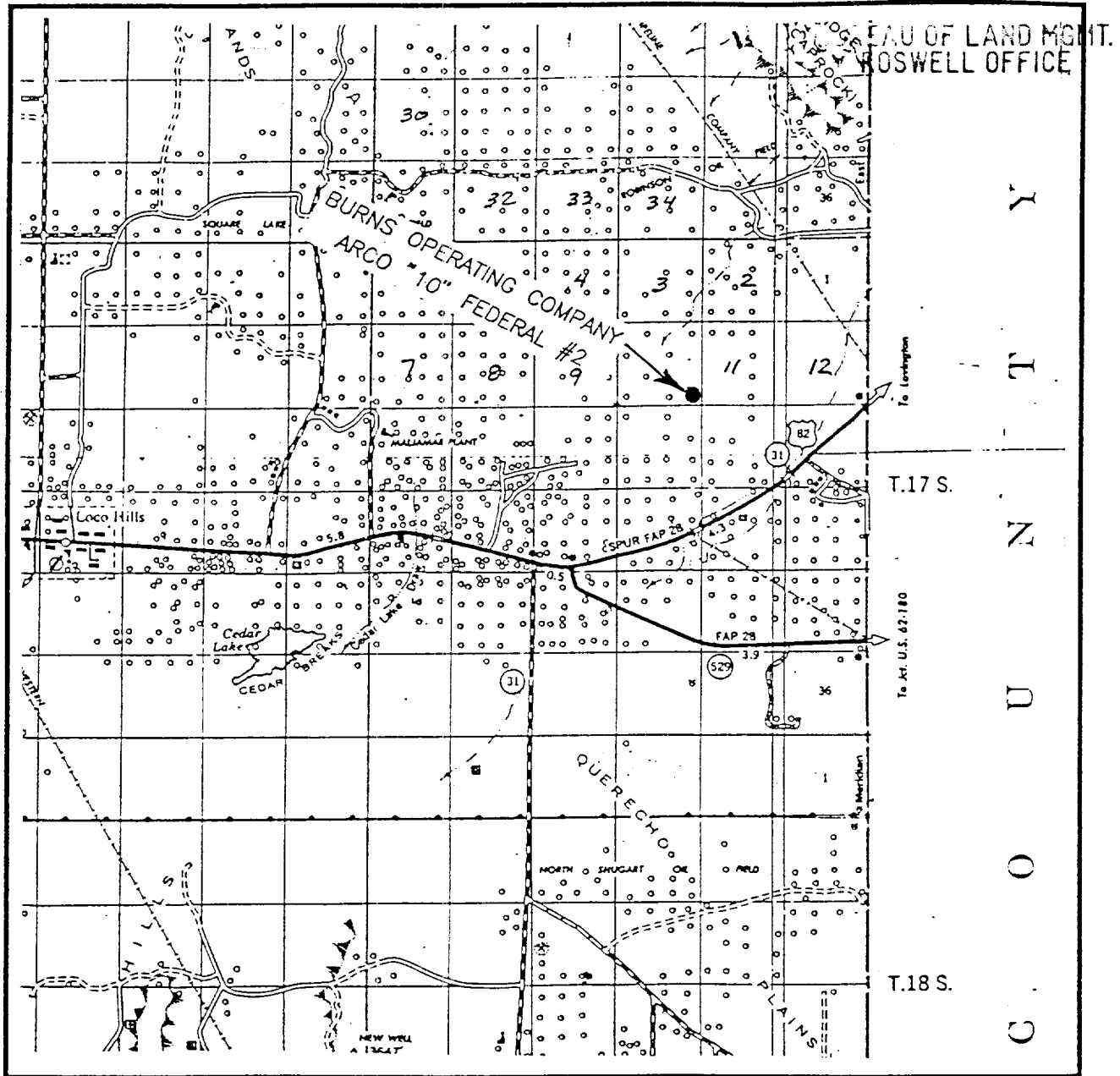
WFO: Num 87-17-1303

Certificate No. RONALD EIDSON, 3239
GARYN EIDSON, 12641

VICINITY MAP

RECEIVED

MAY 24 P 11:35



SCALE: 1" = 2 MILES

SEC. 10 TWP. 17-S RGE. 31-E

SURVEY N.M.P.M.

COUNTY EDDY

DESCRIPTION 351' FSL & 687' FEL

ELEVATION 3909'

OPERATOR BURNS OPERATING COMPANY

LEASE ARCO "10" FEDERAL

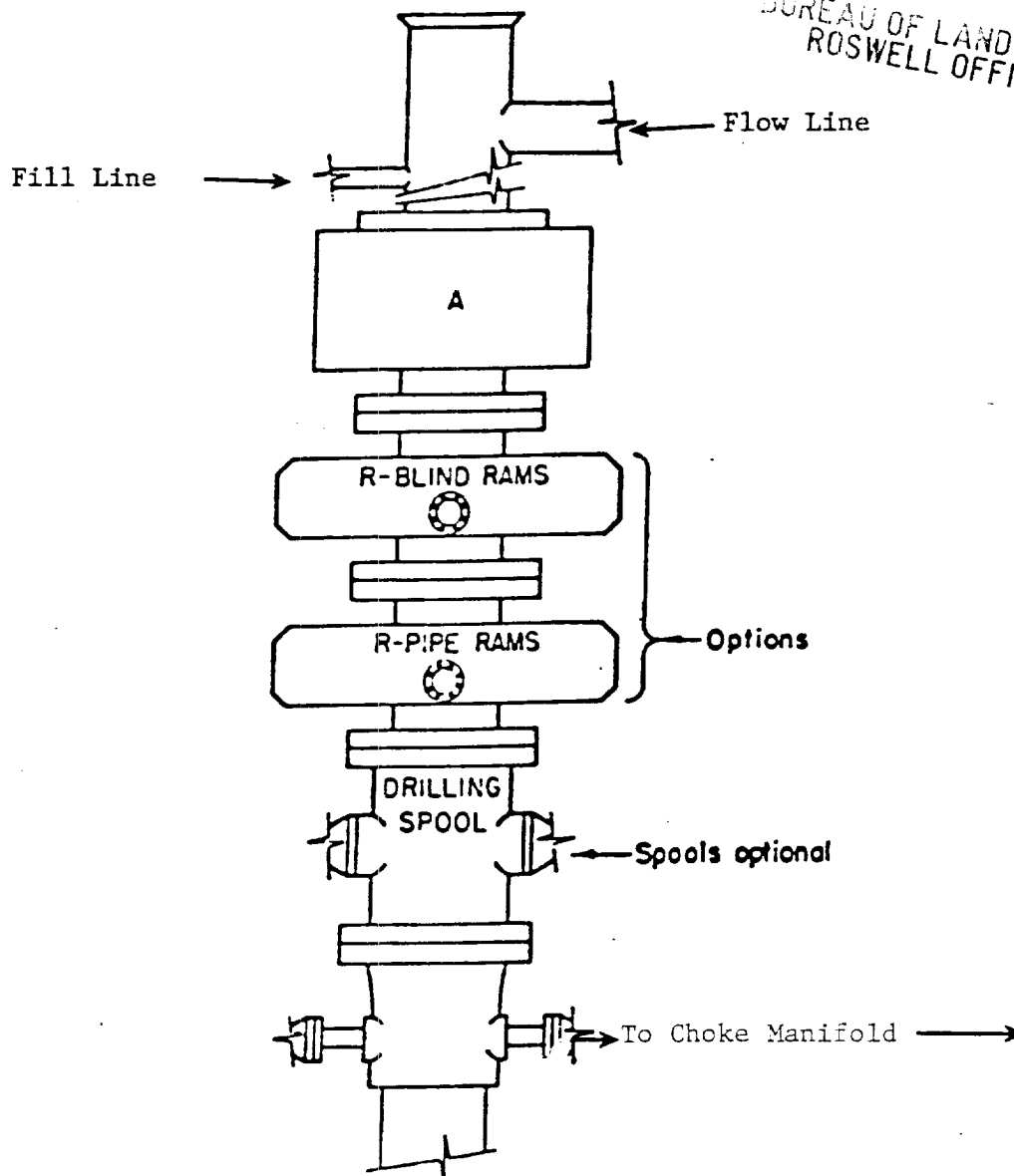
JOHN WEST ENGINEERING
HOBBS, NEW MEXICO

(505) 393-3117

RECEIVED

1997 AUG 24 P 11: 36

BUREAU OF LAND MGMT.
ROSWELL OFFICE



ARRANGEMENT SRRA

1500 Series

5000# Working Pressure

EXHIBIT "E"
B.O.P. SKETCH TO BE USED ON
BURNS OPERATING COMPANY
ARCO "10" FEDERAL # 2
UNIT "P" SECTION 10
T17S-R31E EDDY CO. NM



RECEIVED

1997 AUG 24 P 11: 36

BUREAU OF LAND MGMT.
ROSWELL OFFICE

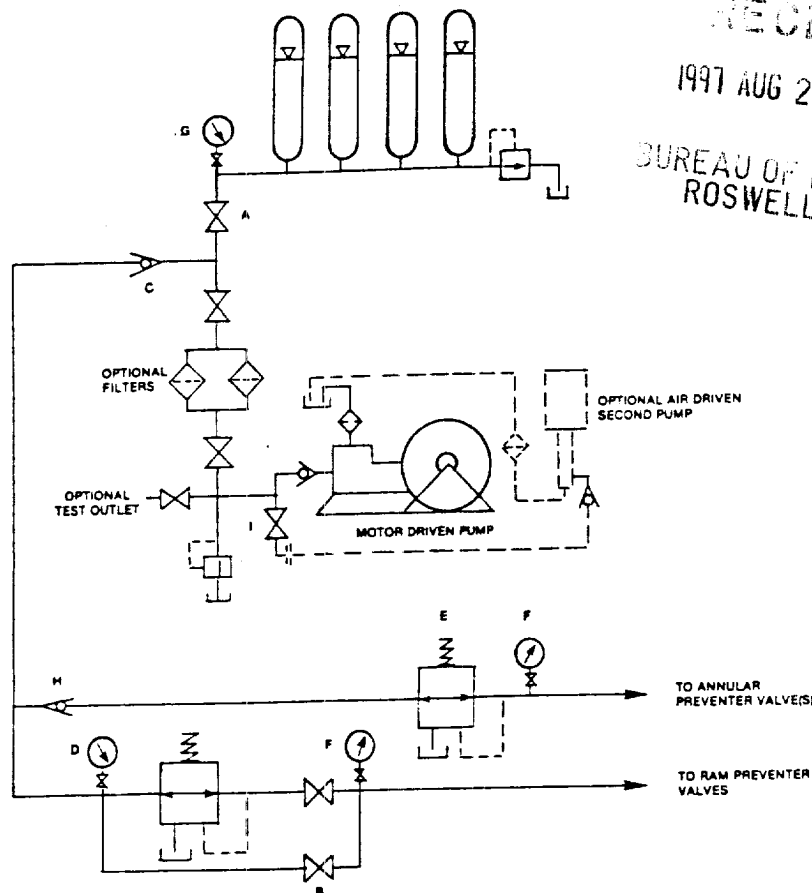


FIGURE K6-1. The schematic sketch of an accumulator system shows required and optional components.

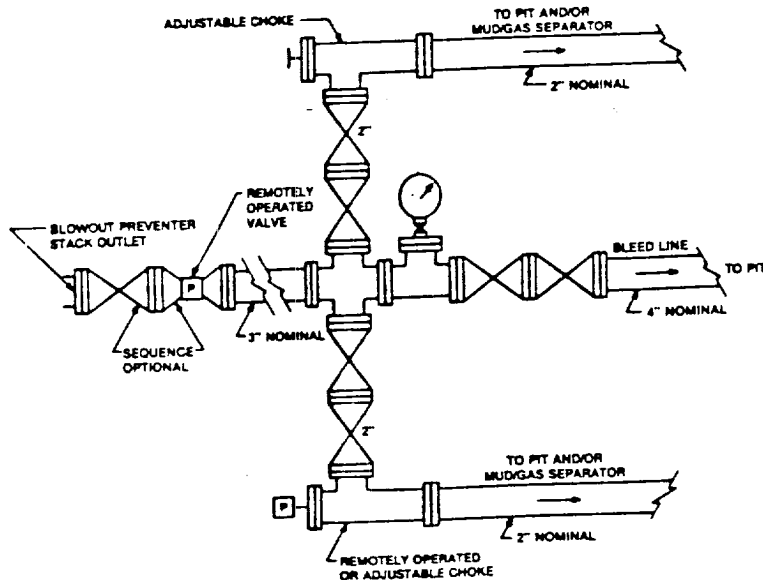


FIGURE K4-2. Typical choke manifold assembly for 5M rated working pressure service — surface installation.

EXHIBIT "E-1"
CHOKE MANIFOLD & CLOSING UNIT
BURNS OPERATING COMPANY
ARCO "10" FEDERAL # 2
UNIT "P" SECTION 10
T17S-R31E EDDY CO. NM