

DEPARTMENT OF THE INTERIOR  
BUREAU OF LAND MANAGEMENT

RECEIVED

## APPLICATION FOR PERMIT TO DRILL OR DEEPEN

## 1a. TYPE OF WORK

DRILL ☒DEEPEN ☐

## b. TYPE OF WELL

OIL  
WELL ☒GAS  
WELL ☐OTHER ☐

## 2. NAME OF OPERATOR

SOUTHWEST ROYALTIES, INC. (NELSON PATTON)

## 3. ADDRESS AND TELEPHONE NO.

P.O. BOX 11390 MIDLAND TEXAS 79702-8390 Ph: 915-686-9927

4. LOCATION OF WELL (Report location clearly and in accordance with any State requirements.)\*  
At surface430' FSL & 1650' FWL SEC. 18 T17S-R29E EDDY CO. NM  
At proposed prod. zone

## 14. DISTANCE IN MILES AND DIRECTION FROM NEAREST TOWN OR POST OFFICE\*

Approximately 9 miles West Northwest of Loco Hills New Mexico

## 15. DISTANCE FROM PROPOSED\*

LOCATION TO NEAREST  
PROPERTY OR LEASE LINE, FT.  
(Also to nearest drlg. unit line, if any)

430'

18. DISTANCE FROM PROPOSED LOCATION\*  
TO NEAREST WELL, DRILLING, COMPLETED,  
OR APPLIED FOR, ON THIS LEASE, FT.

990'

## 16. NO. OF ACRES IN LEASE

480

## 19. PROPOSED DEPTH

9100'

17. NO. OF ACRES ASSIGNED  
TO THIS WELL

40

## 20. ROTARY OR CABLE TOOLS

Rotary

## 21. ELEVATIONS (Show whether DF, RT, GR, etc.)

3668' GR.

SUBJECT TO  
LIKE APPROVAL  
BY STATE

## 22. APPROX. DATE WORK WILL START\*

As soon as approved

## 23.

## PROPOSED CASING AND CEMENTATION PROGRAM

SIZE OF HOLE	GRADE, SIZE OF CASING	WEIGHT PER FOOT	SETTING DEPTH	QUANTITY OF CEMENT
25"	Conductor 20"	NA	40'	Cement to surface with Redi-mix
17 1/2"	H-40 13 3/8"	48	450'	450 Sx. Circulate cement
12 1/2"	J-55 8 5/8"	32	2600'	1000 Sx. Circulate cement
7 7/8"	J-55 & N-80 5 1/2"	15.5 & 17	9100'	1000 Sx. top cement 2400'

1. Drill 25" hole to 40'. Set 40' of 20" conductor. Cement to surface with Redi-mix.
2. Drill 17 1/2" hole to 450'. Run and set 450' of 13 3/8" 48# H-40 ST&C casing. Cement with 450 Sx of Class "C" cement + 2% CaCl, circulate cement to surface.
3. Drill 12 1/2" hole to 2600'. Run and set 2600' of 8 5/8" 32# J-55 ST&C casing. Cement with 800 Sx. of Class "C" Halco Light, tail in with 200 Sx. of Class "G" + 2% CaCl, circulate cement to surface.
4. Drill 7 7/8" hole to 9100'. Run and set 9100' of 5 1/2" 17 & 15.5# J-55 & N-80 LT&C casing as follows, 1700' of 17# N-80 LT&C, 7000' of 15.5# J-55 LT&C, 400' of 17# N-80 LT&C. Cement with 800 Sx. of Class "H" Halco Light, tail in with 200 Sx. of Class "H" + additives. Estimated top of cement 2400'.

IN ABOVE SPACE DESCRIBE PROPOSED PROGRAM: If proposal is to deepen, give data on present productive zone and proposed new productive zone. If proposal is to drill or deepen directionally, give pertinent data on subsurface locations and measured and true vertical depths. Give blowout preventer program, if any.

## 24.

SIGNED

*Joel Garcia*

TITLE Agent

DATE 07/17/97

(This space for Federal or State office use)

PERMIT NO.

APPROVAL DATE

Application approval does not warrant or certify that the applicant holds legal or equitable title to those rights in the subject lease which would entitle the applicant to conduct operations thereon.

CONDITIONS OF APPROVAL, IF ANY:

*\* Weak string**(7000' 15.5# for collapse)**GOURLY-RDD - BLIND*

ADM, MINERALS

APPROVED BY

(ORIG. SGD.) TONY L. FERGUSON

TITLE

DATE

9-16-97

\*See Instructions On Reverse Side

DISTRICT I  
P.O. Box 1980, Hobbs, NM 88241-1980

State of New Mexico  
Energy, Minerals and Natural Resources Department

Form C-102  
Revised February 10, 1994  
Submit to Appropriate District Office  
State Lease - 4 Copies  
Fee Lease - 3 Copies

DISTRICT II  
P.O. Drawer DD, Artesia, NM 88211-0719

DISTRICT III  
1000 Rio Brazos Rd., Aztec, NM 87410

DISTRICT IV  
P.O. BOX 2088, SANTA FE, N.M. 87504-2088

OIL CONSERVATION DIVISION

P.O. Box 2088  
Santa Fe, New Mexico 87504-2088

☐ AMENDED REPORT

WELL LOCATION AND ACREAGE DEDICATION PLAT

API Number <b>30-015-29855</b>	Pool Code 96417	Pool Name ANDERSON WOLFCAMP
Property Code	Property Name MALLARD 18 FEDERAL	Well Number 1
OGRID No. 021355	Operator Name SOUTHWEST ROYALTIES, INC.	Elevation 3668'

Surface Location

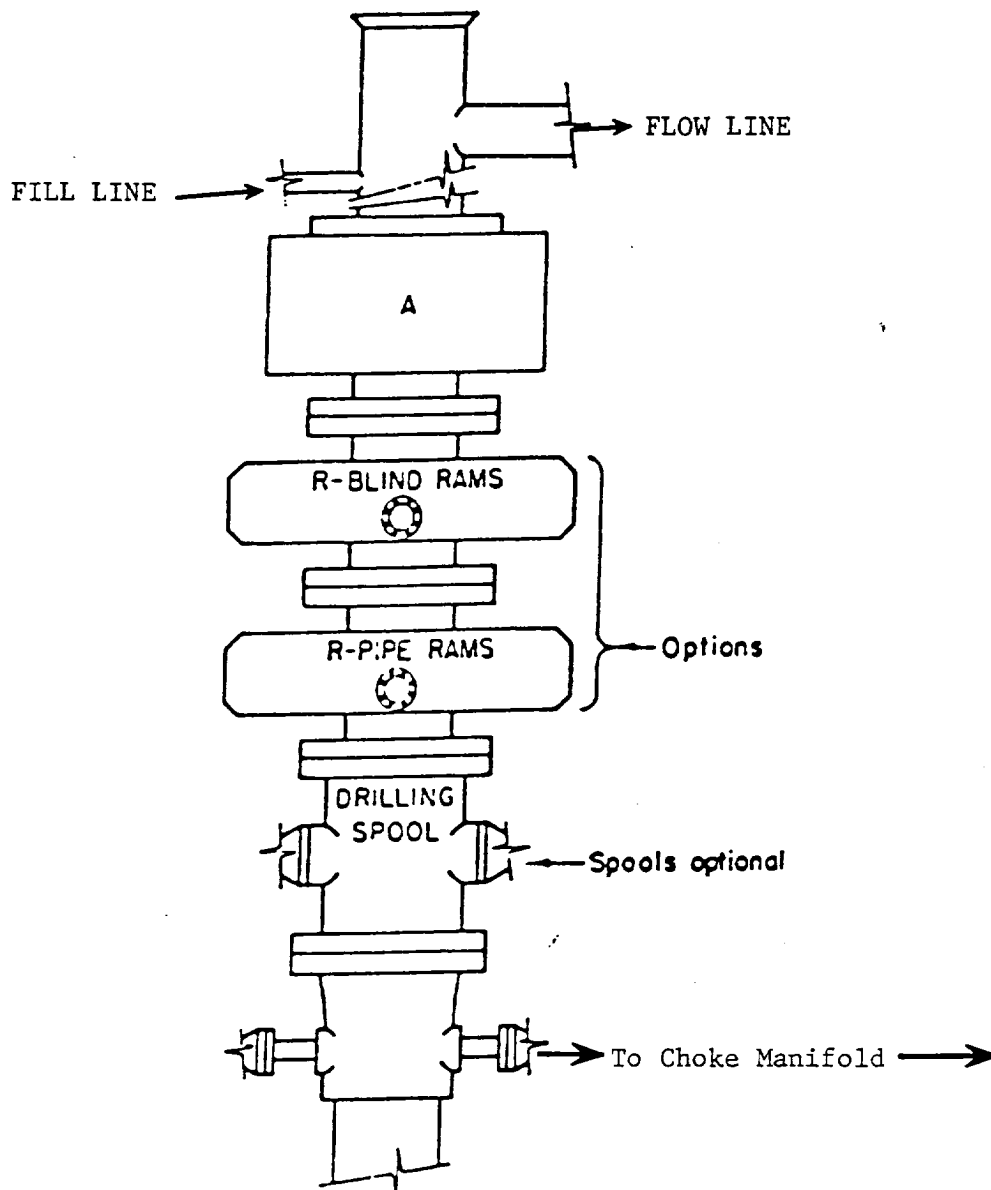
UL or lot No.	Section	Township	Range	Lot Idn	Feet from the	North/South line	Feet from the	East/West line	County
N	18	17 S	29 E		430	SOUTH	1650	WEST	EDDY

Bottom Hole Location If Different From Surface

UL or lot No.	Section	Township	Range	Lot Idn	Feet from the	North/South line	Feet from the	East/West line	County
Dedicated Acres 40	Joint or Infill	Consolidation Code	Order No.						

NO ALLOWABLE WILL BE ASSIGNED TO THIS COMPLETION UNTIL ALL INTERESTS HAVE BEEN CONSOLIDATED  
OR A NON-STANDARD UNIT HAS BEEN APPROVED BY THE DIVISION

<p>LOT 1 26.69 AC.</p>									
<p>LOT 2 26.81 AC.</p>									
<p>LOT 3 26.92 AC.</p>									
<p>LOT 4 27.04 AC.</p> <p>3665.7' 3662.3'</p> <p>1650'</p> <p>3673.2' 430' 3673.4'</p>									
<p>OPERATOR CERTIFICATION</p> <p>I hereby certify that the information contained herein is true and complete to the best of my knowledge and belief.</p> <p><i>Joe T. Janica</i> Signature Joe T. Janica Printed Name Agent Title 07/17/97 Date</p> <p>SURVEYOR CERTIFICATION</p> <p>I hereby certify that the well location shown on this plat was plotted from field notes of actual surveys made by me or under my supervision and that the same is true and correct to the best of my belief.</p> <p>MAY 27, 1997</p> <p>Date Surveyed CDG</p> <p>Signature of Seal of Professional Surveyor RONALD J. EDSON 5-29-97 07-11-0898</p> <p>Certificate No. JOHN W. WEST 676 RONALD J. EDSON 3239 RONALD J. EDSON 12641</p>									



# **ARRANGEMENT SRRA**

900 Series  
3000 PSI WP

EXHIBIT "E"  
B.O.P. SKETCH TO BE USED ON  
SOUTHWEST ROYALTY INC.  
MALLARD "18" FEDERAL # 1  
UNIT "N" SECTION 18  
T17S-R29E EDDY CO. NM

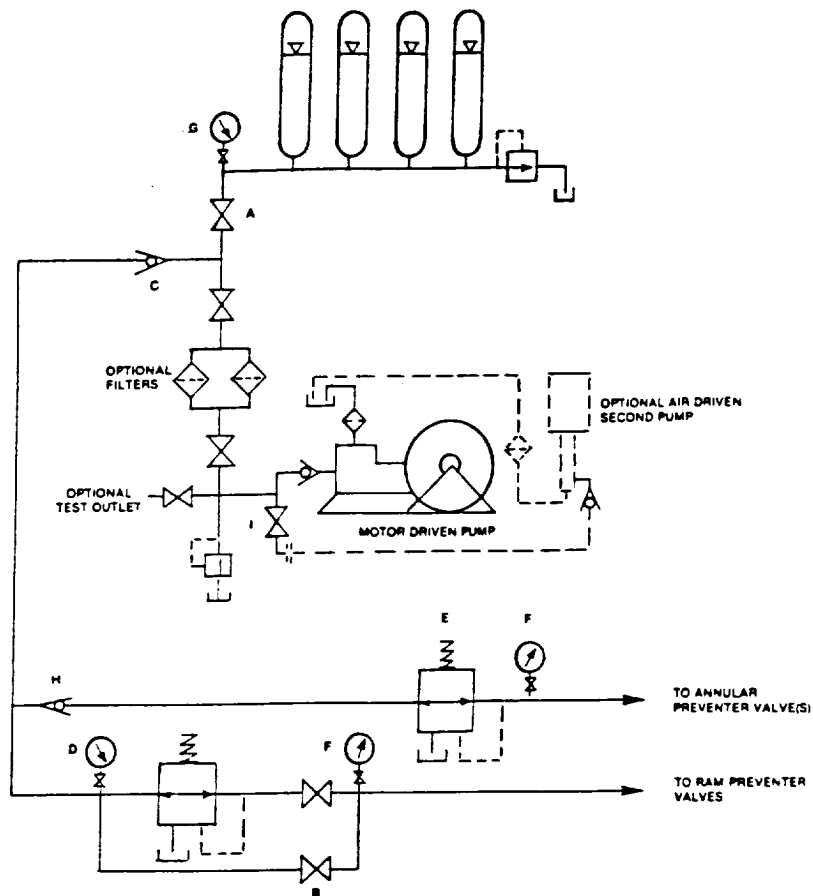


FIGURE K6-1. The schematic sketch of an accumulator system shows required and optional components.

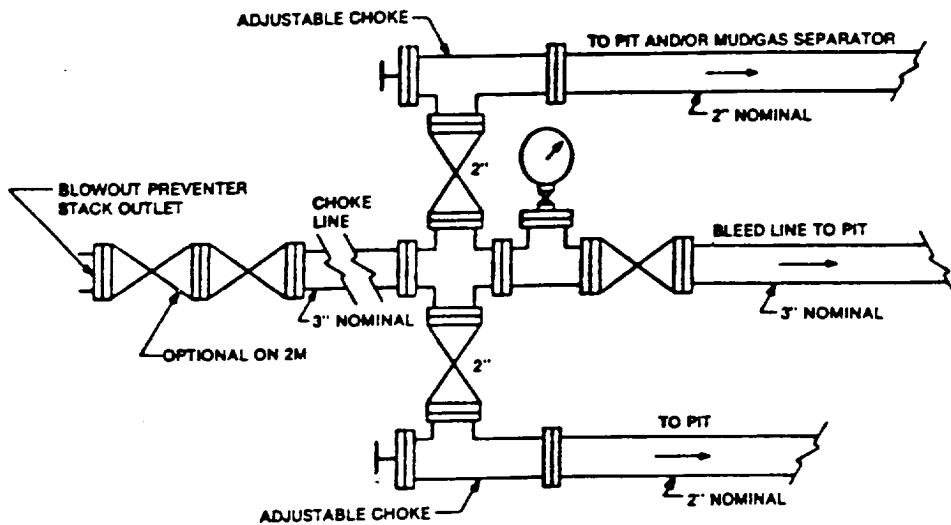


FIGURE K4-1. Typical choke manifold assembly for 2M and 3M rated working pressure service — surface installation.

EXHIBIT "1-E"  
CHOKE MANIFOLD & CLOSING UNIT

SOUTHWEST ROYALTY INC.  
MALLARD " 18" FEDERAL # 1  
UNIT "N" SECTION 18  
T17S-R29E EDDY CO. NM