

District I
PO Box 1980, Hobbs, NM 88241-1980
District II
811 S. 1st Street, Artesia, NM 88210-2834
District III
1000 Rio Brazos Rd., Aztec, NM 87410
District IV
2040 South Pacheco, Santa Fe, NM 87505

State of New Mexico
Energy, Minerals & Natural Resources Department

OIL CONSERVATION DIVISION
2040 South Pacheco
Santa Fe, NM 87505

Revised October 1997
Instruction on Back
Submit to Appropriate District Office
State Lease - 6 Copies
Fee Lease - 5 Copies

☐ AMENDED REPORT

APPLICATION FOR PERMIT TO DRILL, RE-ENTER, DEEPEN, PLUG BACK, OR ADD A ZONE

¹ Operator name and Address ARCO PERMIAN P.O. BOX 1610 MIDLAND, TX 79702		² OGRID Number 000990
⁴ Property Code 20761	⁵ Property Name BARCLAY STATE	³ API Number 30-0 15-29927
		⁶ Well No. 9

⁷ Surface Location

UL or lot no.	Section	Township	Range	Lot. Idn	Feet from the	North/South Line	Feet from the	East/West line	County
B 2	2	23S	31E		660	NORTH	1980	EAST	EDDY

⁸ Proposed Bottom Hole Location If Different From Surface

UL or lot no.	Section	Township	Range	Lot. Idn	Feet from the	North/South Line	Feet from the	East/West line	County
9 Proposed Pool 1					10 Proposed Pool 2				
LIVINGSTON RIDGE SOUTH (DELAWARE) 96149									

¹¹ Work Type Code N	¹² Well Type Code O	¹³ Cable/Rotary R	¹⁴ Lease Type Code S	¹⁵ Ground Level Elevation 3439
¹⁶ Multiple NO	¹⁷ Proposed Depth 8600	¹⁸ Formation DELAWARE	¹⁹ Contractor PETERSON DRIG	²⁰ Spud Date 12/97

²¹ Proposed Casing and Cement Program

Hole Size	Casing Size	Casing weight/foot	Setting Depth	Sacks of Cement	Estimated TOC
17 1/2	13 3/8	48	860	775	SURE
12-1/4	8 5/8	32	4600	1800	SURE
7 7/8	5 1/2	15.5/17	8600	860	4500

²² Describe the proposed program. If this application is to DEEPEN or PLUG BACK give the data on the present productive zone and proposed new productive zone. Describe the blowout prevention program, if any. Use additional sheets if necessary

Subject well planned as a 8600' straight hole.
3000 psi BOPE will be used from 860' to TD.

Notify N.M.O.C.C. in sufficient
time to witness cementing
the 13 3/8" casing

²³ I hereby certify that the information given above is true and complete to the best of my knowledge and belief.

Signature:

Printed name: ELIZABETH A. CASBEER

Title: 11/5/97

OIL CONSERVATION DIVISION
ORIGINAL SIGNED BY TIM W. GUM

Approved by: DISTRICT II SUPERVISOR

Title:

Approval Date: NOV 10 1997 Expiration Date: 11-10-98



in 1914, at 100,000,000, and
the 1914-15 season, at 100,000,000.

1914-15 season, at 100,000,000.

DISTRICT I
P.O. Box 1980, Hobbs, NM 88241-1980

State of New Mexico
Energy, Minerals and Natural Resources Department

Form C-102
Revised February 10, 1994
Submit to Appropriate District Office
State Lease - 4 Copies
Fee Lease - 3 Copies

DISTRICT II
P.O. Drawer DD, Artesia, NM 88211-0719

DISTRICT III
1000 Rio Brazos Rd., Artec, NM 87410

OIL CONSERVATION DIVISION

P.O. Box 2088
Santa Fe, New Mexico 87504-2088

DISTRICT IV
P.O. Box 2088, Santa Fe, NM 87504-2088

☐ AMENDED REPORT

WELL LOCATION AND ACREAGE DEDICATION PLAT

API Number 30-115-29927	Pool Code 96149	Pool Name LIVINGSTON RIDGE SOUTH (DELAWARE)
Property Code 20761	Property Name BARCLAY STATE	Well Number 9
OGRID No. 000990	Operator Name ARCO PERMIAN	Elevation 3439

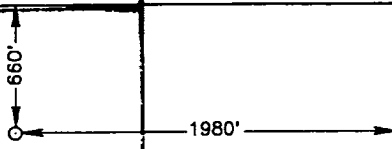
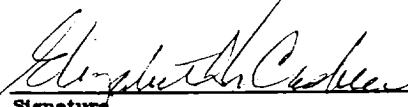
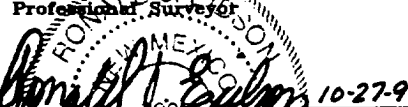
Surface Location

UL or lot No.	Section	Township	Range	Lot Idn	Feet from the	North/South line	Feet from the	East/West line	County
2	2	23 S	31 E		660	NORTH	1980	EAST	EDDY

Bottom Hole Location If Different From Surface

UL or lot No.	Section	Township	Range	Lot Idn	Feet from the	North/South line	Feet from the	East/West line	County
Dedicated Acres 40	Joint or Infill	Consolidation Code	Order No.						

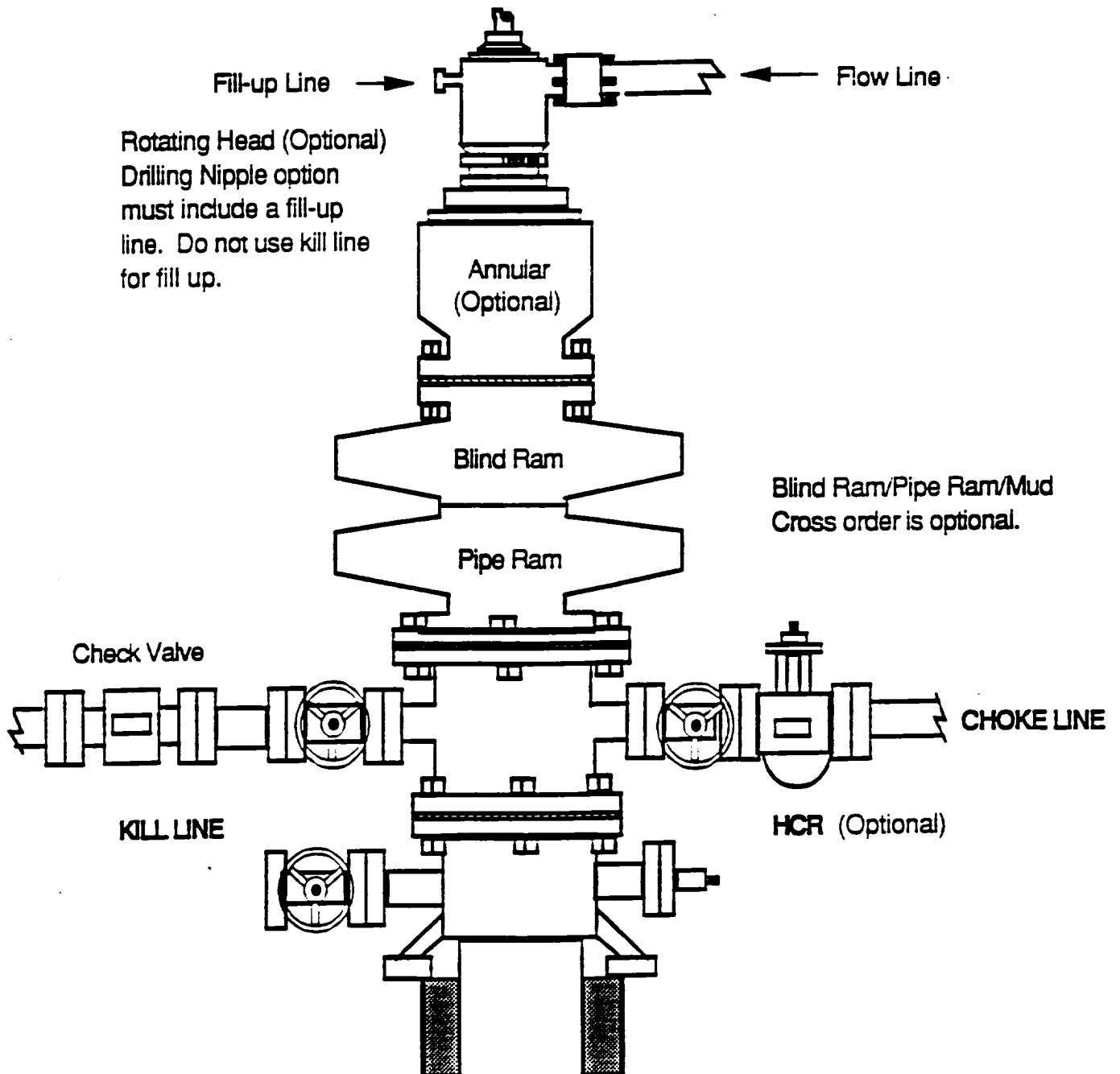
NO ALLOWABLE WILL BE ASSIGNED TO THIS COMPLETION UNTIL ALL INTERESTS HAVE BEEN CONSOLIDATED
OR A NON-STANDARD UNIT HAS BEEN APPROVED BY THE DIVISION

LOT 4 39.49 AC.	LOT 3 39.64 AC.	LOT 2 39.78 AC.	LOT 1 39.95 AC.
			
OPERATOR CERTIFICATION I hereby certify the the information contained herein is true and complete to the best of my knowledge and belief.  Signature ELIZABETH A. CASBEER Printed Name REG. / COMP. ANALYST Title 11/5/97 Date			
SURVEYOR CERTIFICATION I hereby certify that the well location shown on this plat was plotted from field notes of actual surveys made by me or under my supervision, and that the same is true and correct to the best of my belief. OCTOBER 21, 1997 Date Surveyed  Signature & Seal of Professional Surveyor RONALD J. EDSON W.O. Num. 97-116 699 Certificate No. RONALD J. EDSON, 3239 GARY G. EDSON, 12841 MASON MEDONALD, 12185			

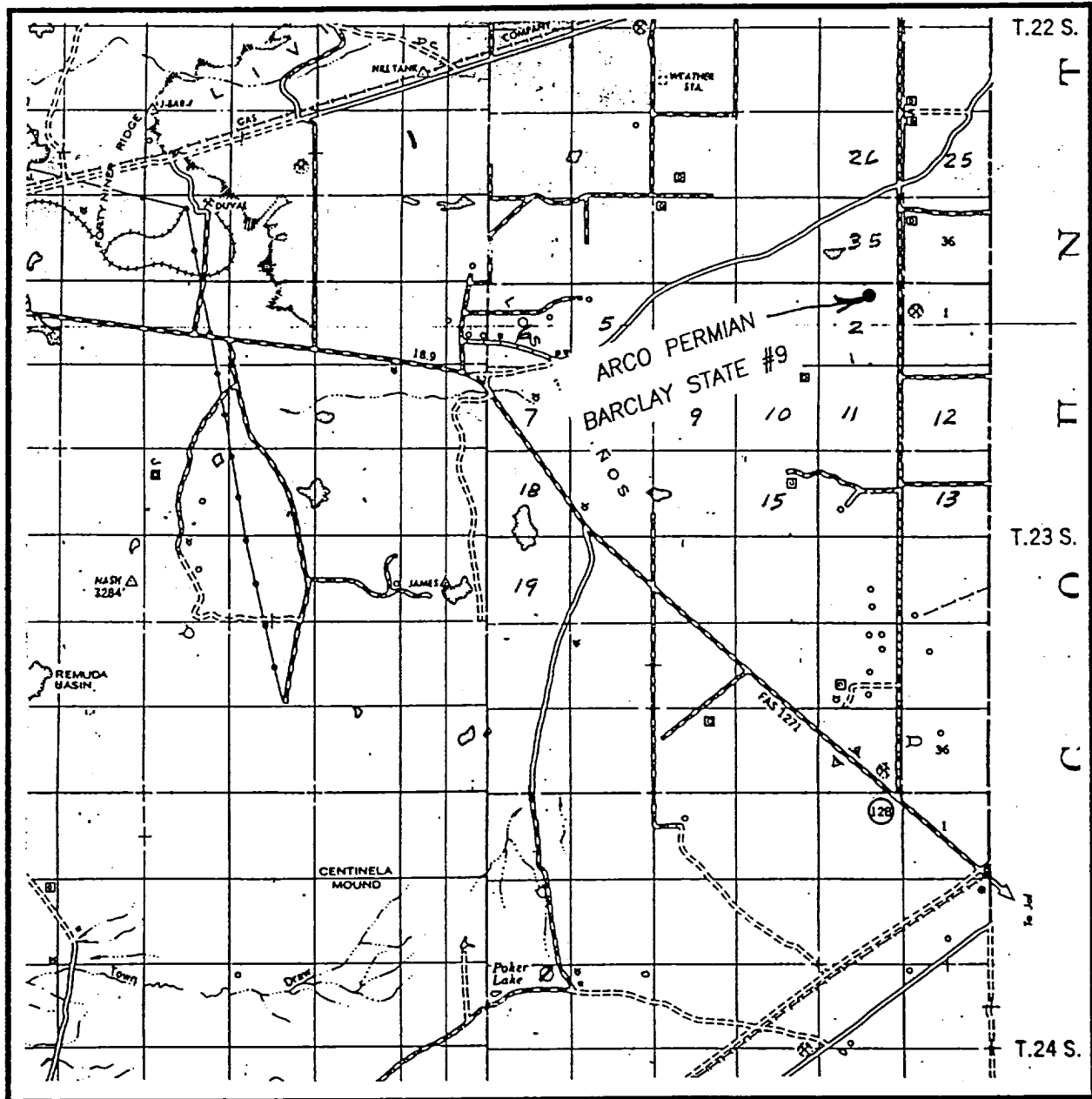
DRILLING OPERATIONS

CLASS - 1: NORMAL PRESSURE < 10 PPG

OPTION - 1: ARCO STANDARD BOPE STACK



VICINITY MAP

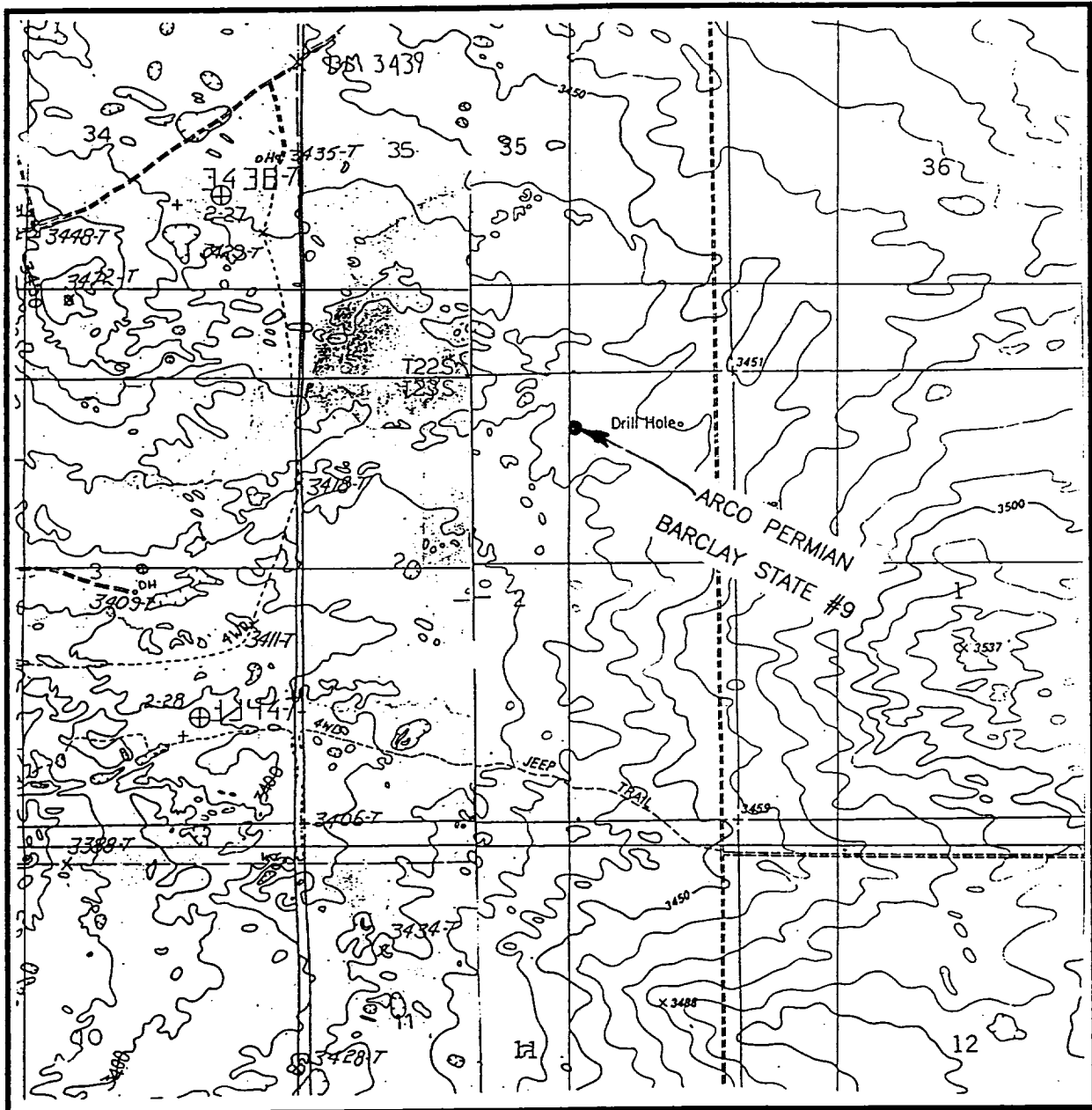


SCALE: 1" = 2 MILES

SEC. 2 TWP. 23-S RGE. 31-E
 SURVEY N.M.P.M.
 COUNTY EDDY
 DESCRIPTION 660' FNL & 1980' FEL
 ELEVATION 3439'
 OPERATOR ARCO PERMIAN
 LEASE BARCLAY FEDERAL

JOHN WEST ENGINEERING
HOBBS, NEW MEXICO
(505) 393-3117

LOCATION VERIFICATION MAP



SCALE: 1" = 2000'

CONTOUR INTERVAL - 10'

SEC. 2 TWP. 23-S RGE. 31-E

SURVEY N.M.P.M.

COUNTY EDDY

DESCRIPTION 660' FNL & 1980' FEL

ELEVATION 3439'

OPERATOR ARCO PERMIAN

LEASE BARCLAY FEDERAL

U.S.G.S. TOPOGRAPHIC MAP

BOOTLEG RIDGE, & LOS MEDANOS, N.M.

JOHN WEST ENGINEERING
HOBBS, NEW MEXICO
(505) 393-3117