

District I  
PO Box 1980, Hobbs, NM 88241-1980  
District II  
PO Drawer DD, Artesia, NM 88211-0719  
District III  
1000 Rio Brazos Rd., Aztec, NM 87410  
District IV  
PO Box 2088, Santa Fe, NM 87504-2088

State of New Mexico  
Energy, Minerals & Natural Resources Department

OIL CONSERVATION DIVISION  
PO Box 2088  
Santa Fe, NM 87504-2088

Form C-1010  
Revised February 10, 1994  
Instructions on back  
Submit to Appropriate District Office  
State Lease - 6 Copies  
Fee Lease - 5 Copies

☐ AMENDED REPORT

APPLICATION FOR PERMIT TO DRILL, RE-ENTER, DEEPEN, PLUGBACK, OR ADD A ZONE

Operator Name and Address: OXY USA Inc. P.O. Box 50250 Midland, TX 79710-0250		OGRID Number 16696
		API Number 30-015-29931
Property Code 21441	Property Name OXY Pronghorn State	Well No. 2

7 Surface Location

UL or lot no.	Section	Township	Range	Lot Ida	Feet from the	North/South line	Feet from the	East/West line	County
15	2	21S	28E		3300	South	1650	East	Eddy

8 Proposed Bottom Hole Location If Different From Surface

UL or lot no.	Section	Township	Range	Lot Ida	Feet from the	North/South line	Feet from the	East/West line	County
Proposed Pool 1 Undesignated Sand Point Morrow 84820					Proposed Pool 2				

Work Type Code N	Well Type Code G	Cable/Rotary R	Lease Type Code S	Ground Level Elevation 3355'
Multiple No	Proposed Depth 12450'	Formation Morrow	Contractor N/A	Spud Date 4/15/98

21 Proposed Casing and Cement Program

Hole Size	Casing Size	Casing weight/foot	Setting Depth	Secks of Cement	Estimated TOC
17-1/2"	13-3/8"	48#	500'	525sx	Surface
11"	8-5/8"	24-32#	3250'	1500sx	Surface
7-7/8"	4-1/2"	11.6#	12450'	800sx	8500'

Describe the proposed program. If this application is to DEEPEN or PLUG BACK give the data on the present productive zone and proposed new productive zone. Describe the blowout prevention program, if any. Use additional sheets if necessary.

SEE OTHER SIDE

APR 1998  
RECEIVED  
OCD - ARTESIA

Posted #D-1  
4-17-98  
APF & HL

I hereby certify that the information given above is true and complete to the best of my knowledge and belief. Signature: <i>David Stewart</i>		OIL CONSERVATION DIVISION	
Printed name: David Stewart		Approved by: SUPERVISOR, DISTRICT II	
Title: Regulatory Analyst		Title:	
Date: 4/7/98		Approval Date: 4-10-98	Expiration Date: 4-10-99
Phone: 915-685-5717		Conditions of Approval: Attached <input type="checkbox"/>	

ATTACHMENT C-101  
OXY USA Inc.  
OXY Pronghorn State #2  
SEC 2 T21S R28E  
Eddy County, NM

PROPOSED TD: 12450' TVD

BOP PROGRAM: 0' - 500' None

500'-3250' 13-3/8" 5M blind and pipe rams with 5M annular preventer.

3250'-12450' 13-3/8" 5M blind and pipe rams with 5M annular preventer and rotating head below 8500'.

CASING: 13-3/8" 48# H40 ST&C casing @ 500'. 17 1/2" hole.

8-5/8" 24-32# K55 ST&C casing @ 3250', 11" hole

4-1/2" 11.6# S95-N80 LT&C casing @ 12450', 7-7/8" hole.

CEMENT: Surface - Circulate cement with 275sx 65/35 C/POZ w/2% CaCl<sub>2</sub> + 6% gel + .25#/sx Cello-seal + .25#/sx Cello-seal followed by 250sx Class C with 2% CaCl<sub>2</sub>.

Intermediate - Circulate cement with 1200sx 65/35 C/POZ w/ 6% gel + 5#/sx salt + .25#/sx Cello-seal followed by 300sx Class C with 2% CaCl<sub>2</sub>. Cement volumes may be adjusted to fluid caliper.

Production - Cement with 800sx Super C Modified w/ 5#/sx Gilsonite + fluid loss additives and retarder. Estimated top of cement is 8500'. Cement volumes may be adjusted to hole caliper.

MUD: 0' - 500' Fresh water spud mud. Gel/Lime for pH control (9 to 10). Paper for seepage.  
Wt. 8.6-8.7 ppg, vis 32-34 sec.

500' - 5000' Fresh/Brine water. Caustic for pH control (10-10.7). Paper for seepage.  
Wt. 10-10.1 ppg, vis 28-32 sec

5000' - 9800' Cut Brine. Caustic for pH control (10-10.5). Paper for seepage.  
Wt. 8.4-8.5 ppg, vis 28-29 sec

9800' - 12450' Mud up with an XCD Polymer system weighing 9.5-11.0 ppg, vis 42-48 sec, WL 6-8cc.

DISTRICT I  
P.O. Box 1980, Hobbs, NM 88240

DISTRICT II  
P.O. Drawer DD, Artesia, NM 88210

DISTRICT III  
1000 Rio Brazos Rd., Aztec, NM 87410

State of New Mexico  
Energy, Minerals and Natural Resources Department

Form C-102  
Revised February 10, 1994  
Instruction on back  
Submit to Appropriate District Office  
State Lease - 4 Copies  
Fee Lease - 3 Copies

OIL CONSERVATION DIVISION

P.O. Box 2088  
Santa Fe, New Mexico 87504-2088

☐ AMENDED REPORT

WELL LOCATION AND ACREAGE DEDICATION PLAT

API Number 30-015-	Pool Code 84820	Pool Name Undesignated Sand Point Morrow
Property Code 21441	Property Name OXY PRONGHORN STATE	Well Number 2
OGRID No. 16696	Operator Name OXY USA INC.	Elevation 3355'

Surface Location

UL or lot No. LOT 15	Section 2	Township 21 S	Range 28 E	Lot Idn	Feet from the 3300	North/South line SOUTH	Feet from the 1650	East/West line EAST	County EDDY
-------------------------	--------------	------------------	---------------	---------	-----------------------	---------------------------	-----------------------	------------------------	----------------

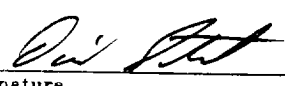
Bottom Hole Location If Different From Surface

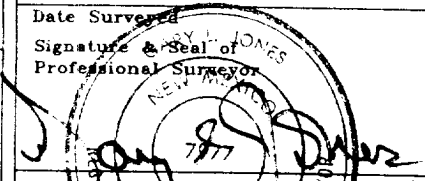
UL or lot No.	Section	Township	Range	Lot Idn	Feet from the	North/South line	Feet from the	East/West line	County
Dedicated Acres 320	Joint or Infill N	Consolidation Code	Order No.						

NO ALLOWABLE WILL BE ASSIGNED TO THIS COMPLETION UNTIL ALL INTERESTS HAVE BEEN CONSOLIDATED  
OR A NON-STANDARD UNIT HAS BEEN APPROVED BY THE DIVISION

1980'			
LOT 12 - 40 ACRES	LOT 11 - 40 ACRES	LOT 10 - 40 ACRES	LOT 9 - 40 ACRES
LOT 13 - 40 ACRES	LOT 14 - 40 ACRES	LOT 15 - 40 ACRES	LOT 16 - 40 ACRES
3352.1' 3355.0'			
3356.9' 3360.9'			
660'			
1650'			
100'			

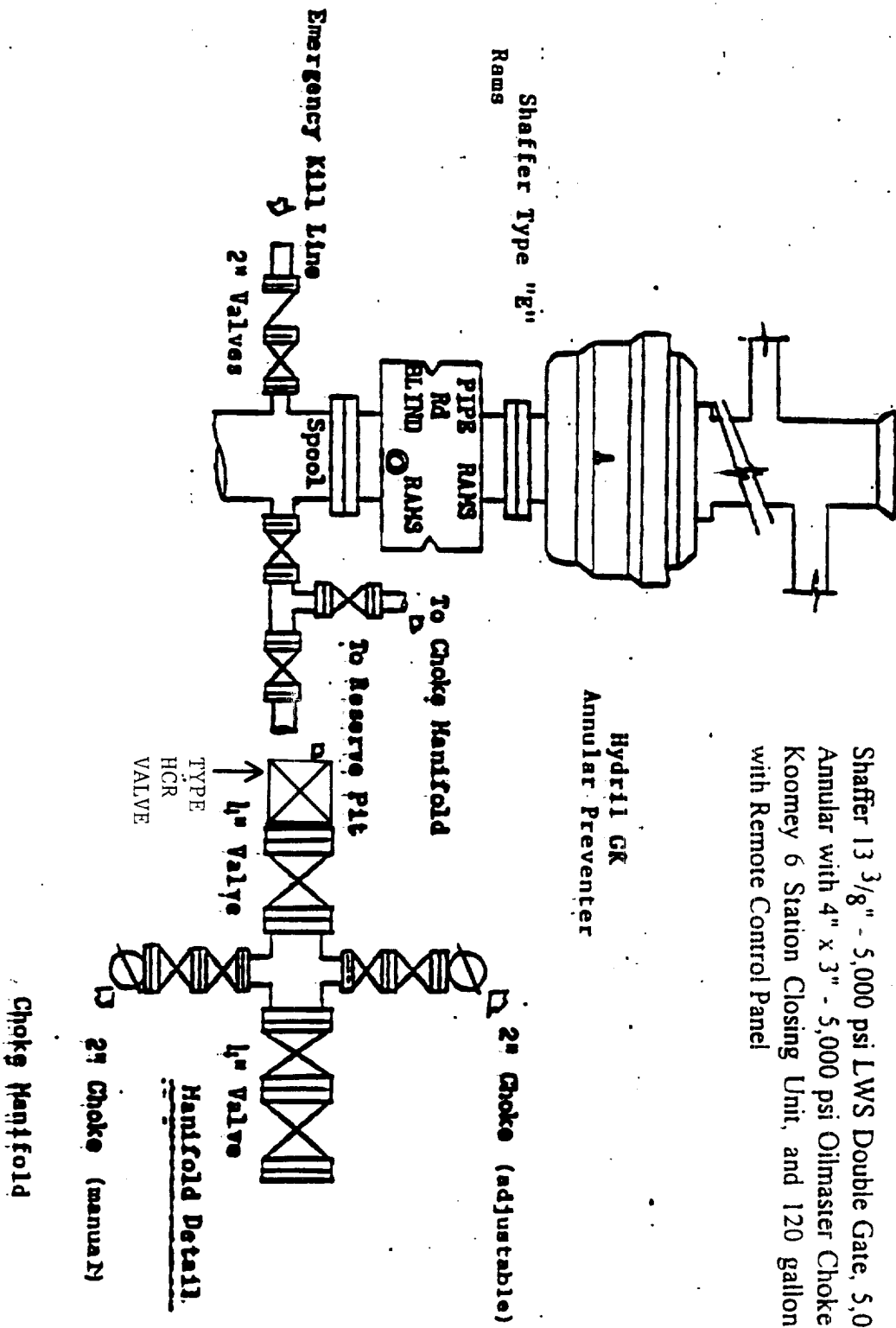
1/4 COR 1/4 COR

**OPERATOR CERTIFICATION**  
I hereby certify the the information contained herein is true and complete to the best of my knowledge and belief  
  
Signature  
David Stewart  
Printed Name  
Regulatory Analyst  
Title  
4/7/98  
Date

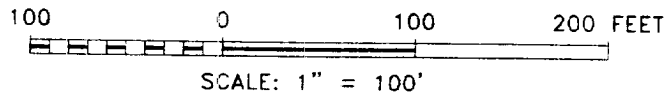
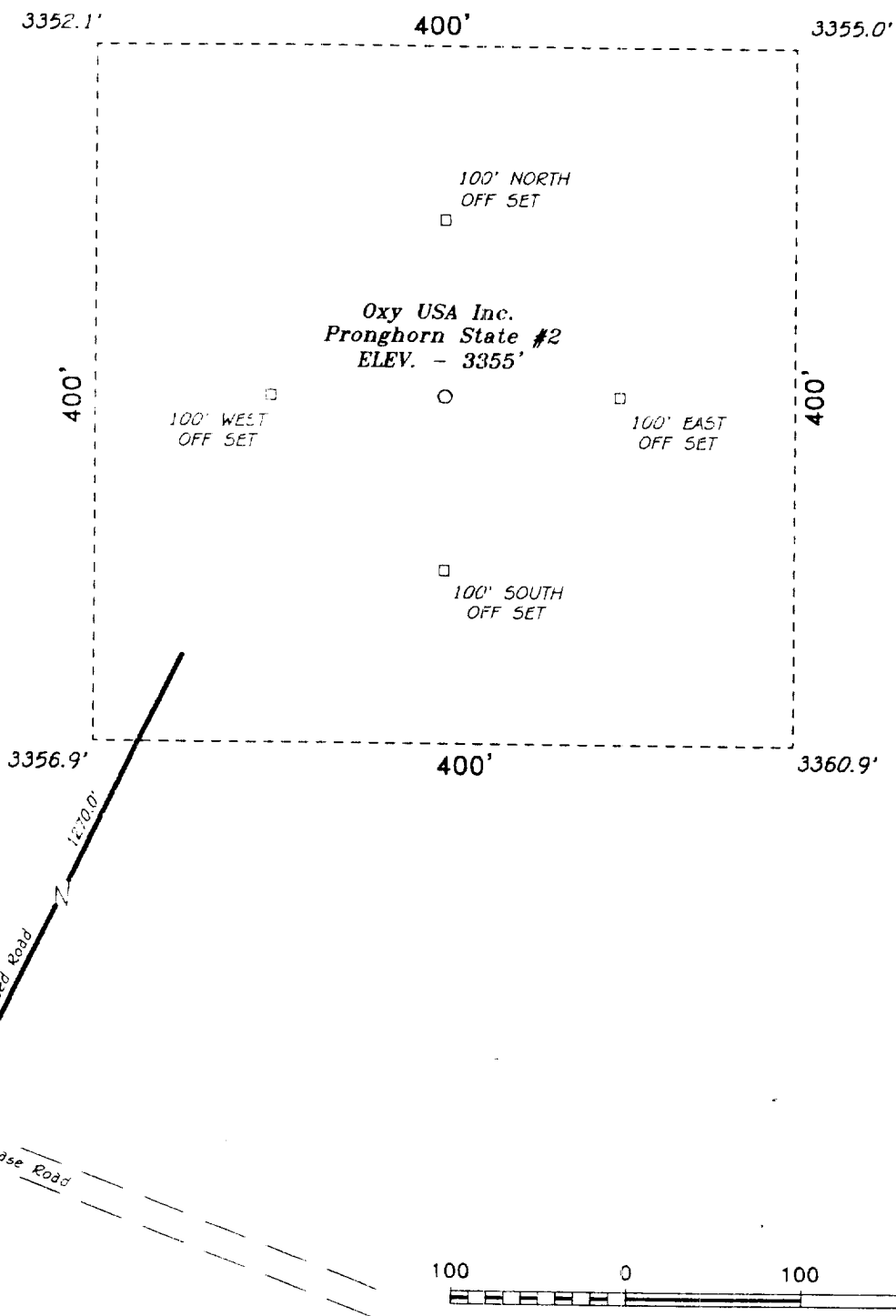
**SURVEYOR CERTIFICATION**  
I hereby certify that the well location shown on this plat was plotted from field notes of actual surveys made by me or under my supervision and that the same is true and correct to the best of my belief  
February 25, 1998  
Date Surveyed  
  
Signature & Seal of Professional Surveyor  
W.C. No. 8119  
Certificate No. Gary L. Jones 7977  
PROFESSIONAL LAND SURVEYOR  
NEW MEXICO  
DATE SURVEYED

# **BLOWOUT PREVENTOR SCHEME**

EXHIBIT A



SECTION 2, TOWNSHIP 21 SOUTH, RANGE 28 EAST, N.M.P.M.,  
EDDY COUNTY, NEW MEXICO.



**Oxy USA Inc.**

REF: Pronghorn State #2 / Well Pad Topo

THE PRONGHORN STATE No. 2 LOCATED 3300' FROM THE  
SOUTH LINE AND 1650' FROM THE EAST LINE OF  
SECTION 2, TOWNSHIP 21 SOUTH, RANGE 28 EAST,  
N.M.P.M., EDDY COUNTY, NEW MEXICO.

**BASIN SURVEYS** P.O. BOX 1786 - HOBBS, NEW MEXICO

W.O. Number: 8119

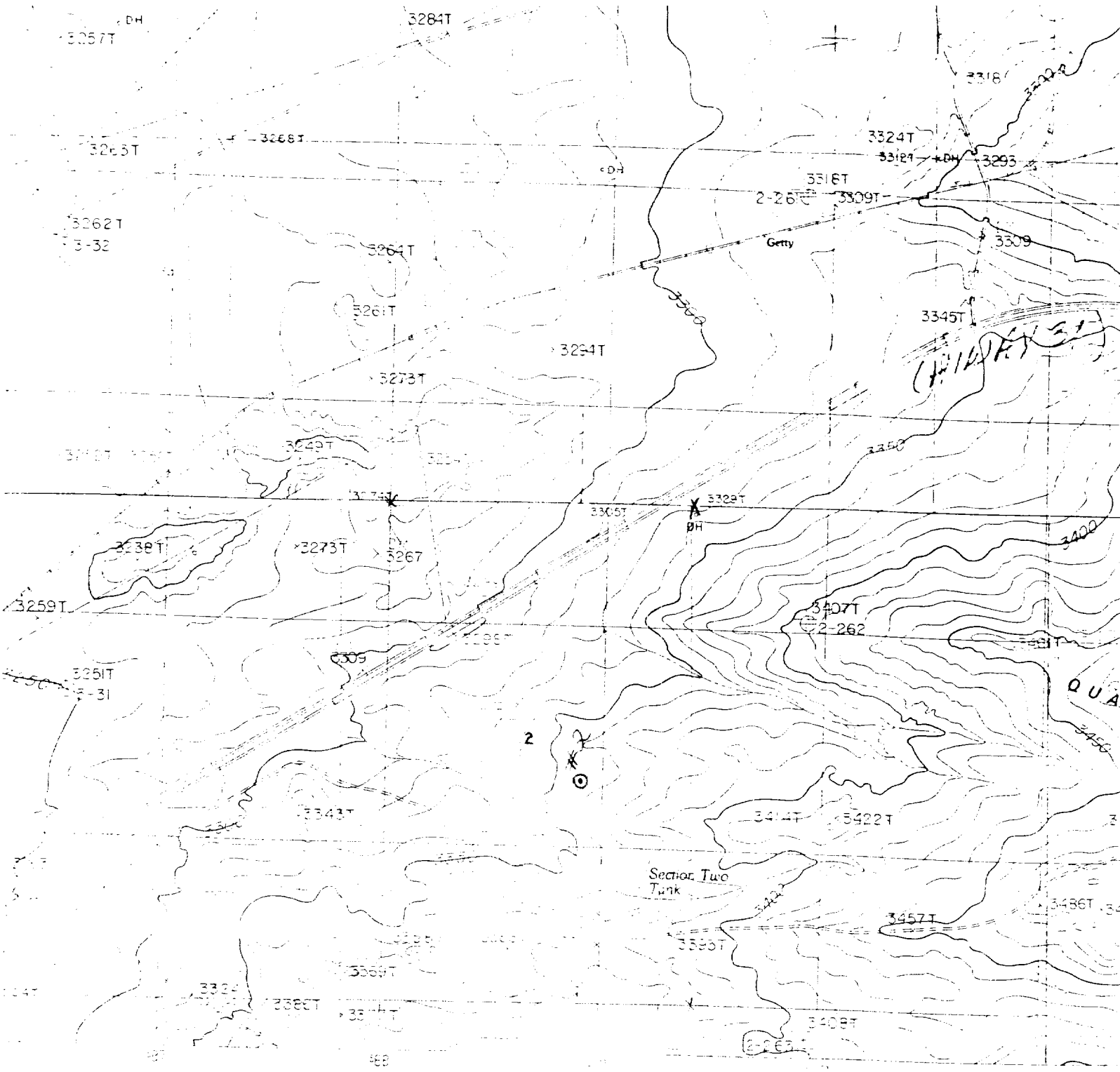
Drawn By: K. GOAD

Date: 02-27-98

Disk: KJG #93 - 8119A.DWG

Survey Date: 02-28-98

Sheet 1 of 1 Sheets



OXY USA INC.  
 PRONGHORN STATE #2  
 3300' FSL & 1650' FEL  
 Sec. 2, T-21-S, R-28-E,  
 Eddy County, New Mexico.



SCALE: 1"=2000'

**BASIN SURVEYS**

P.O. BOX 1786 - HOBBS, NEW MEXICO



W.O. Number: 8119	Drawn By: K. GOAD	Survey Date: 02-25-98	Sheet 1 of 1 Sheets
-------------------	-------------------	-----------------------	---------------------