

District I
PO Box 1980, Hobbs, NM 88241-1980
District II
811 S. 1st Street Artesia, NM 88210-1404
District III
1000 Rio Brazos Rd, Aztec, NM 87410
District IV
PO Box 2088, Santa Fe, NM 87504-2088

State of New Mexico
Energy, Minerals & Natural Resources Department

OIL CONSERVATION DIVISION
PO Box 2088
Santa Fe, NM 87504-2088

Form C-101
Revised February 10, 1994
Instructions on back
Submit to Appropriate District Office
State Lease - 6 Copies
Fee Lease - 5 Copies

☐ AMENDED REPORT

APPLICATION FOR PERMIT TO DRILL, RE-ENTER, DEEPEN, PLUGBACK, OR ADD A ZONE

Operator Name and Address Mack Energy Corporation P.O. Box 960 Artesia, NM 88211-0960		OGRID Number 013837
Property Code 019984	Property Name Yucca State	API Number 30-015-29933
		Well No. 6

Surface Location

UL or lot no. E	Section 16	Township 17S	Range 31E	Lot Idn	Feet from the 1980	North/South line North	Feet from the 990	East/West line West	County Eddy
--------------------	---------------	-----------------	--------------	---------	-----------------------	---------------------------	----------------------	------------------------	----------------

Proposed Bottom Hole Location If Different From Surface

UL or lot No.	Section	Township	Range	Lot Idn	Feet from the	North/South line	Feet from the	East/West line	County
Proposed Pool 1 Fren Paddock (26770)					Proposed Pool 2				

Work Type Code N	Well Type Code O	Cable/Rotary R	Lease Type Code S	Ground Level Elevation 3759
Multiple No	Proposed Depth 5400	Formation Paddock	Contractor Larue Drilling	Spud Date 12/15/97

Proposed Casing and Cement Program

Hole Size	Casing Size	Casing weight/foot	Setting Depth	Sacks of Cement	Estimated TOC
12 1/4	8 5/8	32	600	Circ	Port ID-1
7 7/8	5 1/2	17	5400	Sufficient to Circ	11-21-97
					API & Loc

Describe the proposed program. If this application is to DEEPEN or PLUG BACK give the data on the present productive zone and proposed new productive zone. Describe the blowout prevention program, if any. Use additional sheets if necessary.

Mack Energy Corporation proposes to drill a Paddock test to 5400'. Drill 12 1/4" Hole to 600', run 8 5/8" casing and cement. Drill to 7 7/8" hole to 5400'. Test Paddock formation, if commercial will run 5 1/2" casing and cement. Put on Production.

*Note: On Production string, fluid caliber will be run, will figure cement with 25% excess, attempt to circ cement to surface.

I hereby certify that the information given above is true and complete to the best of my knowledge and belief
Signature

Printed name: Crissa D. Carter

Title: Production Clerk

Date: 11/13/97
Phone: (505) 748-1288

OIL CONSERVATION DIVISION

Approval by: ORIGINAL SIGNED BY TIM W. GUM
DISTRICT II SUPERVISOR

Title:

Approval Date: NOV 14 1997
Expiration Date: 11-14-98

Conditions of Approval:
Attached ☐

DISTRICT I
P.O. Box 1980, Hobbs, NM 88241-1980

State of New Mexico
Energy, Minerals and Natural Resources Department

Form C-102
Revised February 10, 1994
Submit to Appropriate District Office
State Lease - 4 Copies
Fee Lease - 3 Copies

DISTRICT II
P.O. Drawer DD, Artesia, NM 88211-0719

DISTRICT III
1000 Rio Brazos Rd., Artec, NM 87410

OIL CONSERVATION DIVISION
P.O. Box 2088
Santa Fe, New Mexico 87504-2088

DISTRICT IV
P.O. Box 2088, Santa Fe, NM 87504-2088

☐ AMENDED REPORT

WELL LOCATION AND ACREAGE DEDICATION PLAT

API Number 30-015-29933	Pool Code 26770	Pool Name Fren Paddock
Property Code 019984	Property Name YUCCA STATE	Well Number 6
OGRD No. 013837	Operator Name MACK ENERGY CORPORATION	Elevation 3759

Surface Location

UL or lot No. E	Section 16	Township 17 S	Range 31 E	Lot Idn	Feet from the 1980	North/South line NORTH	Feet from the 990	East/West line WEST	County EDDY
--------------------	---------------	------------------	---------------	---------	-----------------------	---------------------------	----------------------	------------------------	----------------

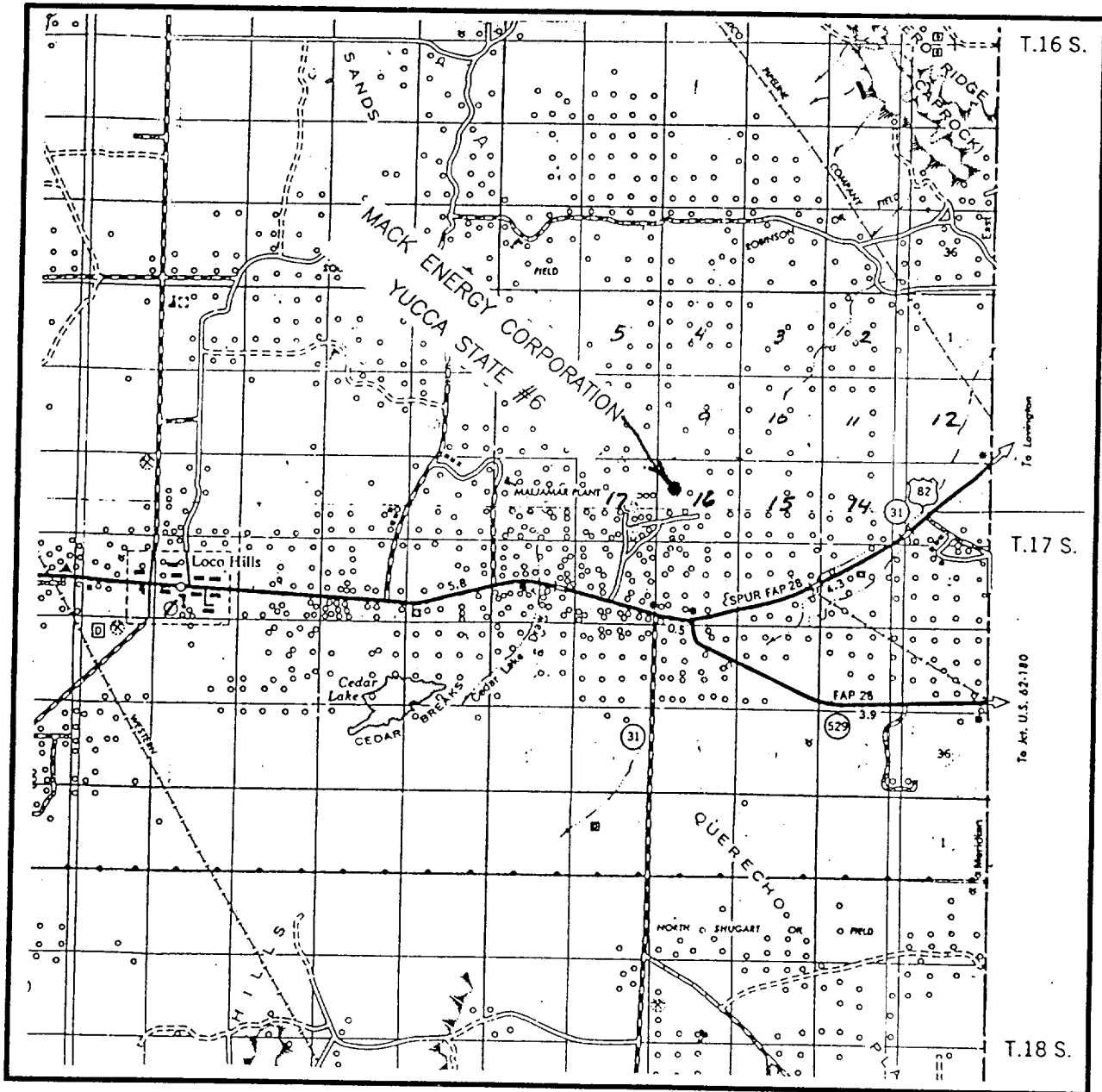
Bottom Hole Location If Different From Surface

UL or lot No.	Section	Township	Range	Lot Idn	Feet from the	North/South line	Feet from the	East/West line	County
Dedicated Acres 40	Joint or Infill	Consolidation Code	Order No.						

NO ALLOWABLE WILL BE ASSIGNED TO THIS COMPLETION UNTIL ALL INTERESTS HAVE BEEN CONSOLIDATED
OR A NON-STANDARD UNIT HAS BEEN APPROVED BY THE DIVISION

				OPERATOR CERTIFICATION <i>I hereby certify the the information contained herein is true and complete to the best of my knowledge and belief.</i> Signature Crissa D. Carter Printed Name Production Clerk Title 11-13-97 Date	
				SURVEYOR CERTIFICATION <i>I hereby certify that the well location shown on this plat was plotted from field notes of actual surveys made by me or under my supervision, and that the same is true and correct to the best of my belief.</i> OCTOBER 27, 1997 Date Surveyed Signature & Seal of Professional Surveyor W.O. Num. 97-11-1732	
				Certificate No. RONALD J. EIDSON, 3239 GARY G. EIDSON, 12841 MACON McDONALD, 12185	

VICINITY MAP



SCALE: 1" = 2 MILES

SEC. 16 TWP. 17-S RGE. 31-E

SURVEY N.M.P.M.

COUNTY EDDY

DESCRIPTION 1980' FNL & 990' FWL

ELEVATION 3759'

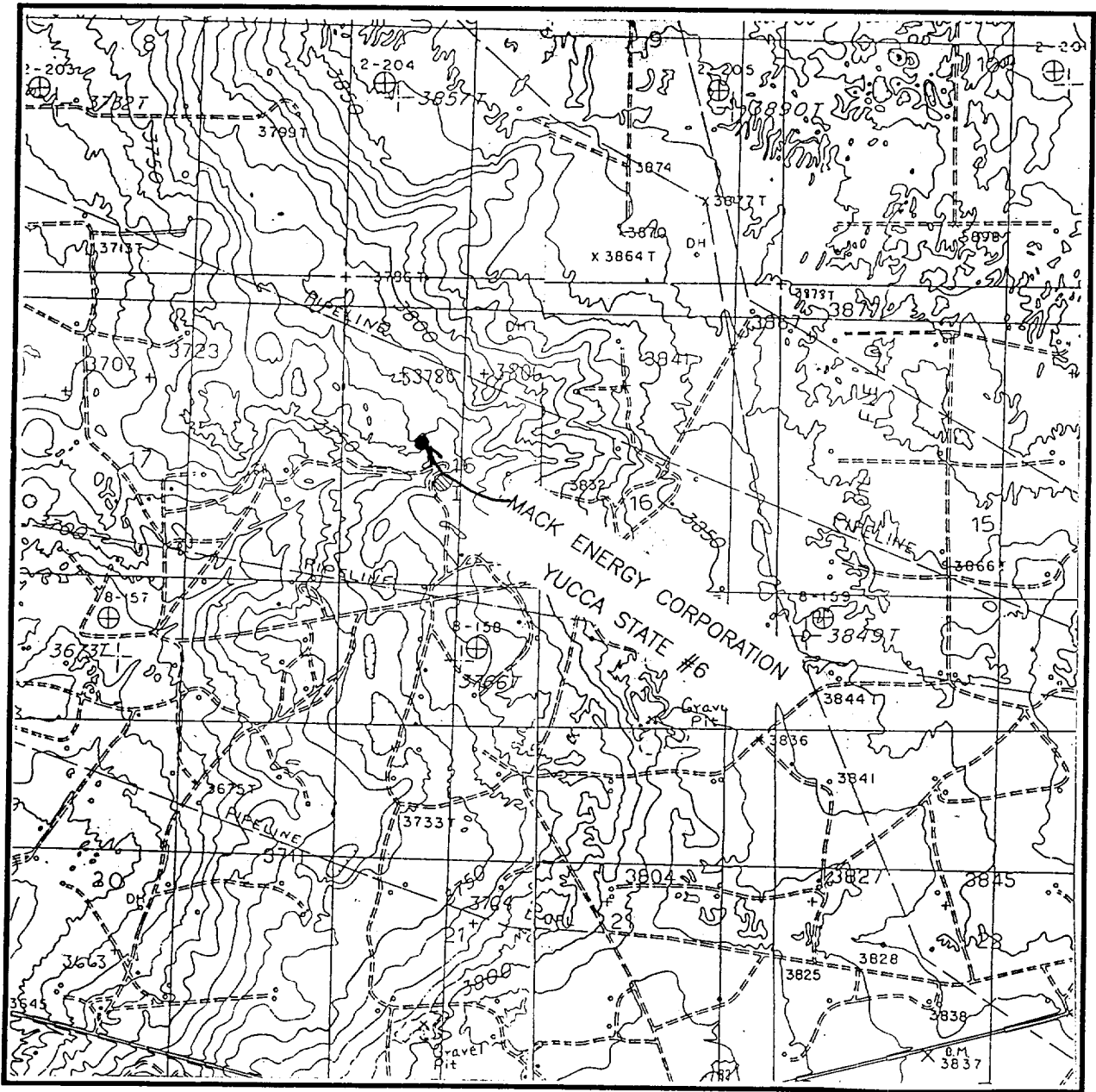
OPERATOR MACK ENERGY CORPORATION

LEASE YUCCA STATE

**JOHN WEST ENGINEERING
HOBBS, NEW MEXICO**

(505) 393-3117

LOCATION VERIFICATION MAP



SCALE: 1" = 2000'

CONTOUR INTERVAL - 10'

SEC. 16 TWP. 17-S RGE. 31-E

SURVEY N.M.P.M.

COUNTY EDDY

DESCRIPTION 1980' FNL & 990' FWL

ELEVATION 3759'

OPERATOR MACK ENERGY CORPORATION

LEASE YUCCA STATE

U.S.G.S. TOPOGRAPHIC MAP

LOCO HILLS & MALJAMAR, N.M.

JOHN WEST ENGINEERING
HOBBS, NEW MEXICO

(505) 393-3117