

Form 3160-3
(July 1992)UNITED STATES
DEPARTMENT OF THE INTERIOR
BUREAU OF LAND MANAGEMENTSUBMIT IN TRIPlicate
(Other Applications on
Reverse Side)RECEIVED
OCD - ARTESIAFORM APPROVED
OMB NO. 1004-0136
Expires: February 28, 1995LEASE DESIGNATION AND SERIAL NO.
NM-75501

APPLICATION FOR PERMIT TO DRILL OR DEEPEN

1a. TYPE OF WORK
DRILL ☒ DEEPEN ☐

b. TYPE OF WELL
OIL WELL ☒ GAS WELL ☐ OTHER ☐ Infill ☐ SINGLE ZONE ☒ MULTIPLE ZONE ☐

2. NAME OF OPERATOR
GP II ENERGY, INC.

3. ADDRESS AND TELEPHONE NO.
P O BOX 50682, MIDLAND, TX 79710 (915) 684-4748

4. LOCATION OF WELL (Report location clearly and in accordance with any State requirements.)
At surface
2630' FNL & 1240' FWL Sec. 29 T16S R31E Unit E
At proposed prod. zone
same
UNORTHODOX LOCATION: Subject to Like Approval By State

14. DISTANCE IN MILES AND DIRECTION FROM NEAREST TOWN OR POST OFFICE
7.1 air miles NE of Loco Hills

15. DISTANCE FROM PROPOSED LOCATION TO NEAREST PROPERTY OR LEASE LINE, FT.
(Also to nearest drilg. unit line, if any)
1240'

16. NO. OF ACRES IN LEASE
280

17. NO. OF ACRES ASSIGNED TO THIS WELL
40

18. DISTANCE FROM PROPOSED LOCATION TO NEAREST WELL, DRILLING, COMPLETED, OR APPLIED FOR, ON THIS LEASE, FT.
700'

19. PROPOSED DEPTH
3800'

20. ROTARY OR CABLE TOOLS
Rotary

21. ELEVATIONS (Show whether DF, RT, GR, etc.)
3912' GL

22. APPROX. DATE WORK WILL START
October 1, 1997

7. UNIT AGREEMENT NAME
22055

8. FARM OR LEASE NAME, WELL NO.
Bruning Federal 7

9. API WELL NO.
30-015-29962

10. FIELD AND POOL, OR WILDCAT
Square Lake GB-SA

11. SEC., T., R., M., OR BLK. AND SURVEY OR AREA
Sec. 29 T16S R31E 57570

12. COUNTY OR PARISH
Eddy

13. STATE
NM

PROPOSED CASING AND CEMENTING PROGRAM

SIZE OF HOLE	GRADE SIZE OF CASING	WEIGHT PER FOOT	SETTING DEPTH	QUANTITY OF CEMENT
12-1/4"	8-5/8" J-55	24#	550'	275 sx +- Class C (Circ)
7-7/8"	5-1/2" J-55	15.50#	3800'	700 sx +- Class C (Circ)

- Propose to drill to about 3800' and complete as an infill Grayburg producer pending any required State approval.
- Set 5-1/2" production casing to TD, cemented with sufficient cement to circulate to the surface. Selectively perforate favorable Grayburg zones.
- Run 2-7/8" tubing to perforations and sand-frac formation.
- Test well to tanks.
- See attached Drilling Data and Surface Use Plan.

*Post ID-1
12-12-97
API & Loc*

Requirements and
Special Operations
Attached

IN ABOVE SPACE DESCRIBE PROPOSED PROGRAM: If proposal is to deepen, give data on present productive zone and proposed new productive zone. If proposal is to drill or deepen directionally, give pertinent data on subsurface locations and measured and true vertical depths. Give blowout preventer program, if any.

SIGNED L. A. J. Jr. TITLE Engineer DATE 9-29-97

(This space for Federal or State office use)

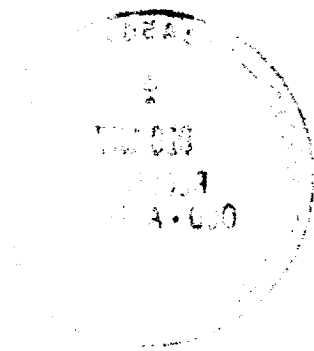
PERMIT NO. _____ APPROVAL DATE _____

Application approval does not warrant or certify that the applicant holds legal or equitable title to those rights in the subject lease which would entitle the applicant to conduct operations thereon.

CONDITIONS OF APPROVAL, IF ANY:

APPROVED BY (ORIG SEC. 7 & 8) FERGUSON TITLE ADM. MINERALS DATE 12-3-97

*See Instructions On Reverse Side



RECEIVED

1991 OCT -1 P 3: 52

BUREAU OF LAND MGMT.
ROSWELL OFFICE

DISTRICT I
P.O. Box 1980, Hobbs, NM 88241-1980

State of New Mexico
Energy, Minerals and Natural Resources Depart

Form C-102
Revised February 10, 1994
Submit to Appropriate District Office
State Lease - 4 Copies
Fee Lease - 3 Copies

DISTRICT II
P.O. Drawer DD, Artesia, NM 88211-0719

DISTRICT III
1000 Rio Brazos Rd., Aztec, NM 87410

DISTRICT IV
P.O. BOX 2088, SANTA FE, N.M. 87504-2088

OIL CONSERVATION DIVISION

P.O. Box 2088
Santa Fe, New Mexico 87504-2088

☐ AMENDED REPORT

WELL LOCATION AND ACREAGE DEDICATION PLAT

API Number 30-015-29962	Pool Code 57570	Pool Name SQUARE LAKE GRAYBURG SAN ANDRES
Property Code	Property Name BRUNING FEDERAL	Well Number 7
OGRID No. 008359	Operator Name GP II ENERGY, INC.	Elevation 3912

Surface Location

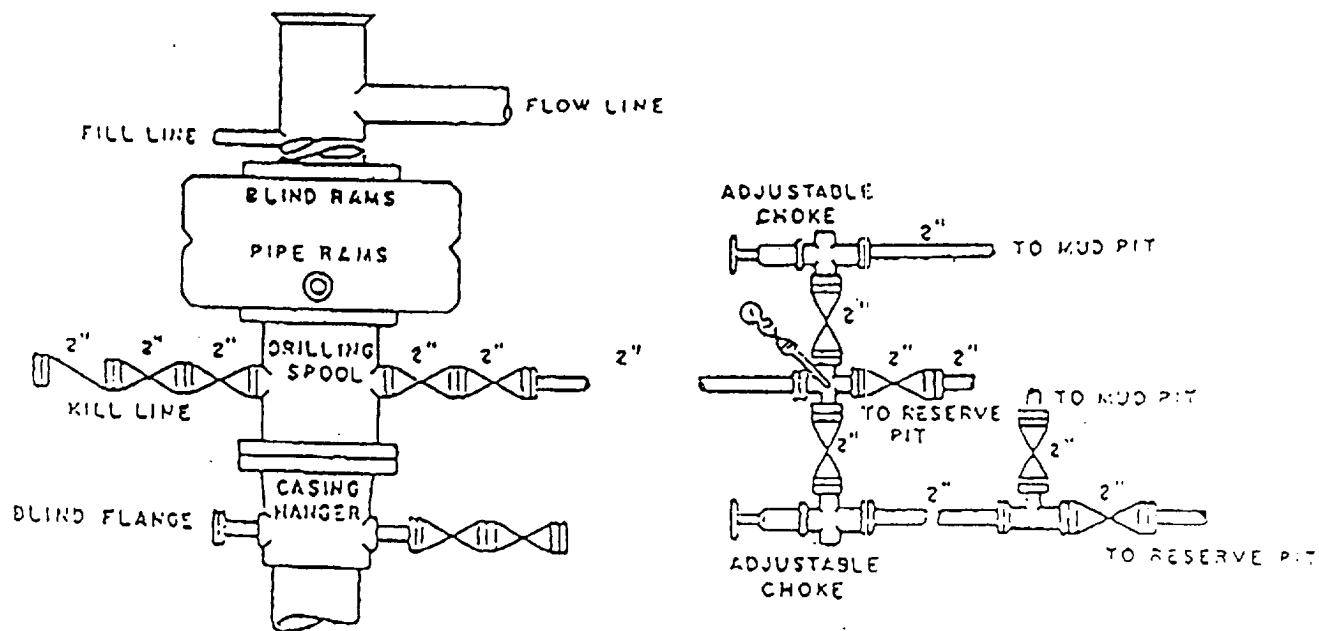
UL or lot No. E	Section 29	Township 16 S	Range 31 E	Lot Idn	Feet from the 2630	North/South line NORTH	Feet from the 1240	East/West line WEST	County EDDY
---------------------------	----------------------	-------------------------	----------------------	---------	------------------------------	----------------------------------	------------------------------	-------------------------------	-----------------------

Bottom Hole Location If Different From Surface

UL or lot No.	Section	Township	Range	Lot Idn	Feet from the	North/South line	Feet from the	East/West line	County
Dedicated Acres	Joint or Infill	Consolidation Code	Order No.						

NO ALLOWABLE WILL BE ASSIGNED TO THIS COMPLETION UNTIL ALL INTERESTS HAVE BEEN CONSOLIDATED
OR A NON-STANDARD UNIT HAS BEEN APPROVED BY THE DIVISION

	OPERATOR CERTIFICATION <i>I hereby certify the the information contained herein is true and complete to the best of my knowledge and belief.</i> Signature M. A. Sirgo, III Printed Name Engineer Title 9-29-97 Date
	SURVEYOR CERTIFICATION <i>I hereby certify that the well location shown on this plat was plotted from field notes of actual surveys made by me or under my supervision, and that the same is true and correct to the best of my belief.</i> SEPTEMBER 9, 1997 Date Surveyed DMCC Signature, & Seal of Professional Surveyor 9-12-97 97-11-1493 Certificate No. JOHN W. WEST 676 RONALD J. EIDSON 3239 GARY EIDSON 12641



BOP DIAGRAM

3000# Working Pressure
Rams Operated Daily

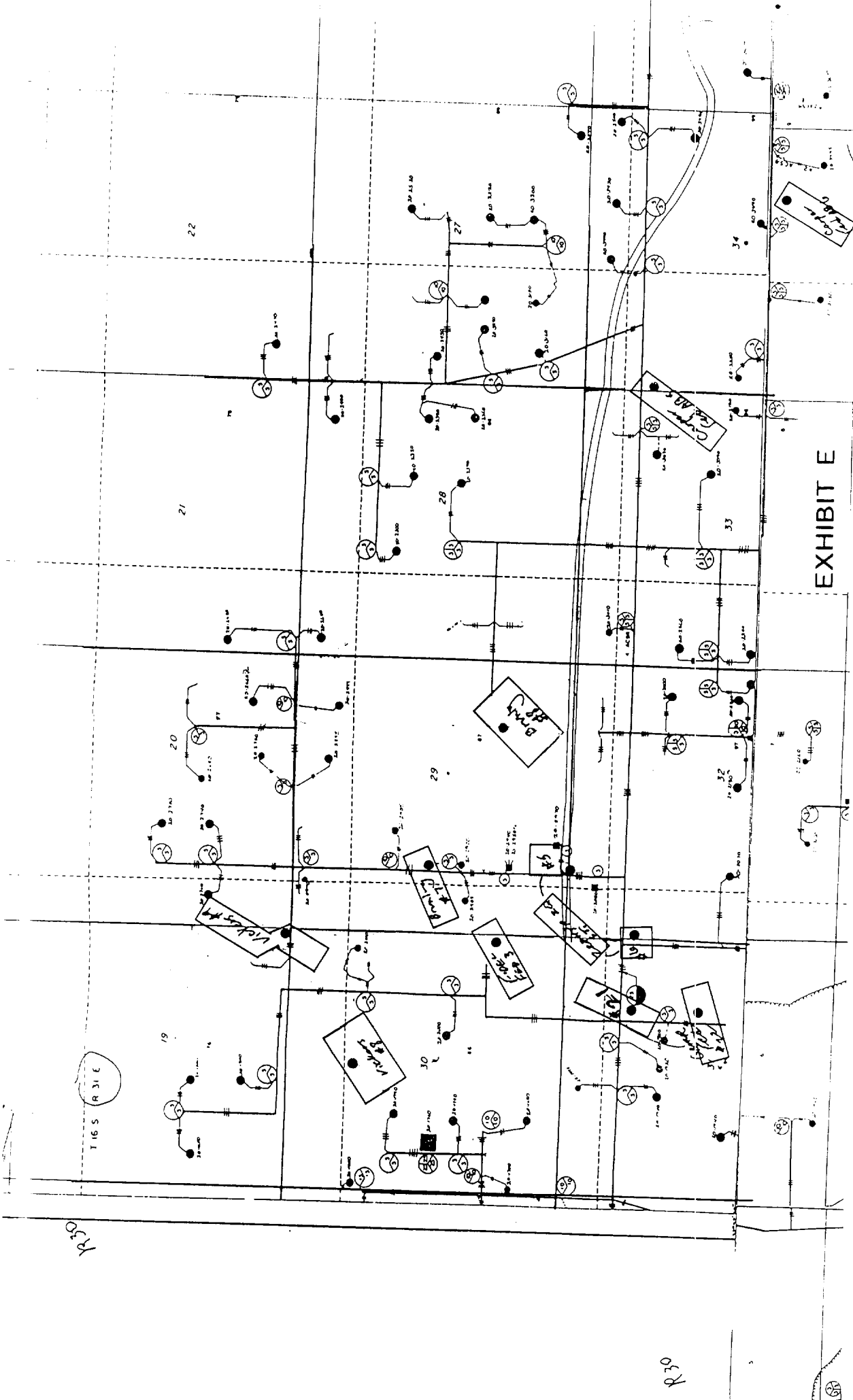


EXHIBIT E

FIGS A 31 E

030