

UNITED STATES
DEPARTMENT OF THE INTERIOR
BUREAU OF LAND MANAGEMENTSUBMIT IN TRIPLICATE:
BUREAU OF LAND MANAGEMENT
875 S. 1ST ST.
ARTESIA, NM 88210-2834

Form approved.

dly

APPLICATION FOR PERMIT TO DRILL OR DEEPEN

1a. TYPE OF WORK: DRILL <input checked="" type="checkbox"/> DEEPEN <input type="checkbox"/>		5. LEASE DESIGNATION AND SERIAL NO. LC-060894	
b. TYPE OF WELL: OIL WELL <input checked="" type="checkbox"/> GAS WELL <input type="checkbox"/> Other _____ SINGLE ZONE <input type="checkbox"/> MULTIPLE ZONE <input type="checkbox"/>		6. IF INDIAN, ALLOTTEE OR TRIBE NAME NA	
2. NAME OF OPERATOR DEVON ENERGY CORPORATION (NEVADA) 4137		7. UNIT AGREEMENT NAME	
3. ADDRESS AND TELEPHONE NO. 20 N. BROADWAY, SUITE 1500, OKC, OK 73102 (405) 552-4511		8. FARM OR LEASE NAME, WELL NO. Patton 6 Federal #3 22225	
4. LOCATION OF WELL (Report location clearly and in accordance with any State requirements)* At surface 930' FSL & 1450' FWL, Unit "N" At top proposed prod. zone (SAME)		9. API WELL NO. 30-015-29980	
10. FIELD AND POOL, OR WILDCAT Red Lake; Q-GB-SA 51300		11. SEC., T., R., M., OR BLOCK AND SURVEY OR AREA Section 6-T18S-27E	
14. DISTANCE IN MILES AND DIRECTION FROM NEAREST TOWN OR POST OFFICE* Approximately 7 miles southeast of Artesia, NM		12. COUNTY OR PARISH Eddy County	
15. DISTANCE FROM PROPOSED LOCATION TO NEAREST PROPERTY OR LEASE LINE, FT. (Also to nearest drls. unit line if any) 930'		13. STATE New Mexico	
16. NO. OF ACRES IN LEASE 120		17. NO. OF ACRES ASSIGNED TO THIS WELL 40	
18. DISTANCE FROM PROPOSED LOCATION* TO NEAREST WELL, DRILLING, COMPLETED, OR APPLIED FOR, ON THIS LEASE, FT. 750'		20. ROTARY OR CABLE TOOLS* Rotary	
19. PROPOSED DEPTH 2800'		22. APPROX. DATE WORK WILL START* January 1, 1998	
21. ELEVATIONS (Show whether DF, RT, GR, etc.) GR 3370'			

RECEIVED
SUBJECT TO
LIKE APPROVAL
BY STATE FOR
UNORTHODOX LOCATION

23. PROPOSED CASING AND CEMENTING PROGRAM				
SIZE OF HOLE	GRADE, SIZE OF CASING	WEIGHT PER FOOT	SETTING DEPTH	QUANTITY OF CEMENT
17 1/2"	14"	Conductor	40'	Redimix
12 1/4"	8 5/8", J-55	24 ppf	1050' 1150'	150 sx Lite + 350 sx CRCS
7 7/8"	5 1/2", J-55	15.5 ppf	2800'	

* Cement will be circulated to surface on all casing strings.

Devon Energy plans to drill to 2800' +/- to test the San Andres Formation for commercial quantities of oil. If the San Andres is deemed non-commercial, the wellbore will be plugged and abandoned per Federal regulations. Programs to adhere to onshore oil and gas regulations are outlined in the following exhibits and attachments.

Drilling Program
Surface Use and Operating Plan
Exhibit #1 - Blowout Prevention Equipment/
Choke Manifold
Exhibit #2 - Location and Elevation Plat
Exhibit #3 - Planned Access Roads
Exhibit #4 - Wells Within a One Mile Radius
Exhibit #5 - Production Facilities Plan
Exhibit #6 - Rotary Rig Layout
Exhibit #7 - Casing Design Parameters and Factors
Exhibit #8 - H₂S Operating Plan

The undersigned accepts all applicable terms, conditions, stipulation, and restrictions concerning operations conducted on the leased land or portion thereof, as described above.

Bond Coverage: Nationwide
BLM Bond File No.: CO-1104APPROVAL SUBJECT TO
GENERAL REQUIREMENTS AND
SPECIAL STIPULATIONS
ATTACHEDposted ID-1
NL & API
12-29-97SIGNED E. L. Buttross, Jr. TITLE DISTRICT ENGINEER DATE November 12, 1997

*(This space for Federal or State office use)

PERMIT NO. _____ APPROVAL DATE _____

Application approval does not warrant or certify that the applicant holds legal or equitable title to those rights in the subject lease which would entitle the applicant to conduct operations thereon.
CONDITIONS OF APPROVAL, IF ANY:APPROVED BY (ORIG. SGN.) ADM, MINPHALS TITLE ADM, MINPHALS DATE 12/18/97

See Instructions On Reverse Side

Title 18 U.S.C. Section 1001, makes it a crime for any person knowingly and willfully to make to any department or agency of the United States any false, fictitious or fraudulent statements or representations as to any matter within its jurisdiction

[Illegible text]

ROSWELL OFFICE

OFFICE OF LAND MANAGEMENT

NOV 19 4:54 PM

RECEIVED

Exhibit 2

DISTRICT I

P.O. Box 1980, Hobbs, NM 88240

State of New Mexico

Energy, Minerals and Natural Resources Department

Form C-102

Revised February 10, 1994

Instruction on back

Submit to Appropriate District Office

State Lease - 4 Copies

Fee Lease - 3 Copies

DISTRICT II

P.O. Drawer DD, Artesia, NM 88210

DISTRICT III

1000 Rio Brazos Rd., Aztec, NM 87410

OIL CONSERVATION DIVISION

P.O. Box 2088

Santa Fe, New Mexico 87504-2088

☐ AMENDED REPORT

WELL LOCATION AND ACREAGE DEDICATION PLAT

API Number 30-015-29980	Pool Code 51300	Pool Name Red Lake (Q-GB-SA)
Property Code	Property Name Potter 6 Federal	Well Number 3
OGRID No.	Operator Name Devon Energy Corporation	Elevation 3370'

Surface Location

UL or lot No.	Section	Township	Range	Lot Idn	Feet from the	North/South line	Feet from the	East/West line	County
N	6	18 S	27 E		930	South	1450	West	Eddy

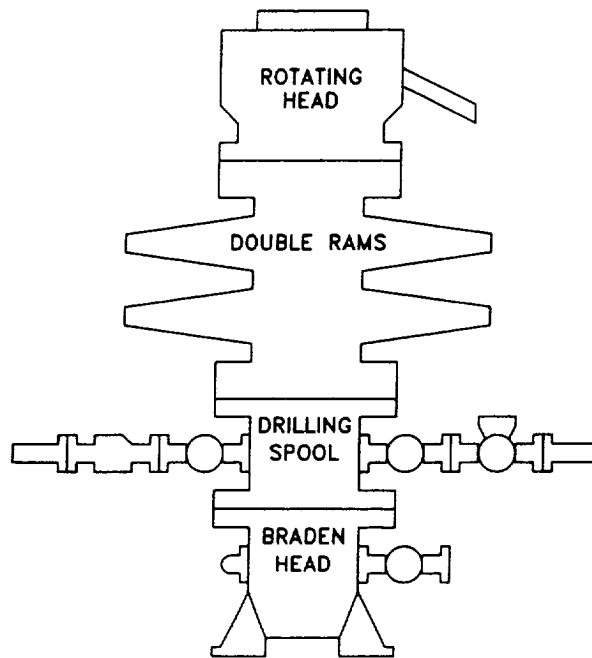
Bottom Hole Location If Different From Surface

UL or lot No.	Section	Township	Range	Lot Idn	Feet from the	North/South line	Feet from the	East/West line	County

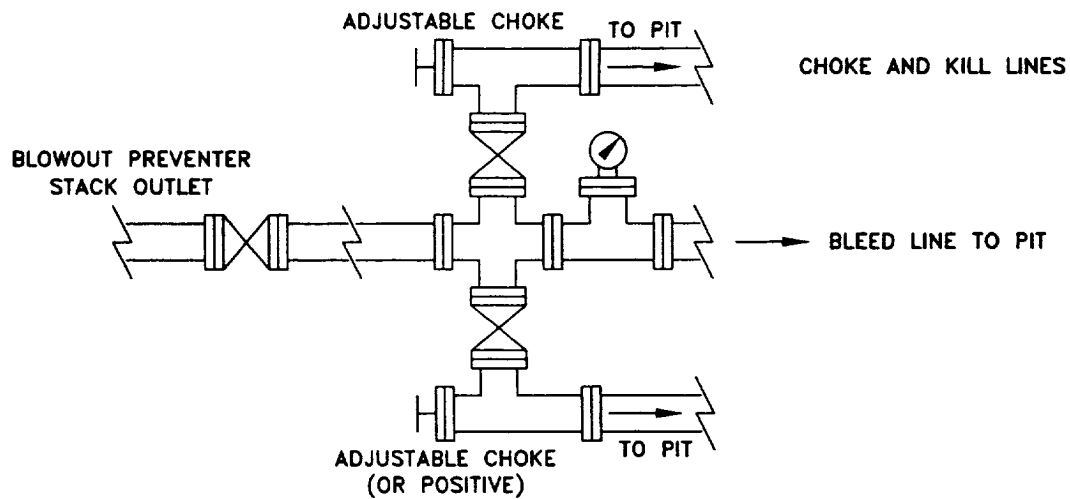
Dedicated Acres	Joint or Infill	Consolidation Code	Order No.

NO ALLOWABLE WILL BE ASSIGNED TO THIS COMPLETION UNTIL ALL INTERESTS HAVE BEEN CONSOLIDATED
OR A NON-STANDARD UNIT HAS BEEN APPROVED BY THE DIVISION

	OPERATOR CERTIFICATION I hereby certify the the information contained herein is true and complete to the best of my knowledge and belief Signature E.L. Buttross, Jr. Printed Name District Engineer Title November 14, 1997 Date
	SURVEYOR CERTIFICATION I hereby certify that the well location shown on this plat was plotted from field notes of actual surveys made by me or under my supervision and that the same is true and correct to the best of my belief October 30, 1997 Date Surveyed Signature & Seal of Professional Surveyor W.O. No. 7576a Certificate No. Gary L. Jones 977 BASIN SURVEYS



CHOKE MANIFOLD REQUIREMENT (2000 psi WP)



devon
ENERGY SERVICES

WEST RED LAKE

EDDY COUNTY, NEW MEXICO

SCHEMATIC
BLOWOUT PREVENTOR
(2000 PSI MINIMUM WP)

WRLBOP	

EB

11/97

Attachment to Exhibit #1
NOTES REGARDING BLOWOUT PREVENTORS
Patton 6 Federal #3
Eddy County, New Mexico

1. Drilling nipple will be constructed so it can be removed mechanically without the aid of a welder. The minimum internal diameter will equal BOP bore.
2. Wear ring will be properly installed in head.
3. Blowout preventor and all associated fittings will be in operable condition to withstand a minimum 2000 psi working pressure.
4. All fittings will be flanged.
5. A full bore safety valve tested to a minimum 2000 psi WP with proper thread connections will be available on the rotary rig floor at all times.
6. All choke lines will be anchored to prevent movement.
7. All BOP equipment will be equal to or larger in bore than the internal diameter of the last casing string.
8. Will maintain a Kelly cock attached to the Kelly.
9. Hand wheels and wrenches will be properly installed and tested for safe operation.
10. All BOP equipment will meet API standards and include a minimum 40 gallon accumulator having two independent means of power to initiate closing operation.