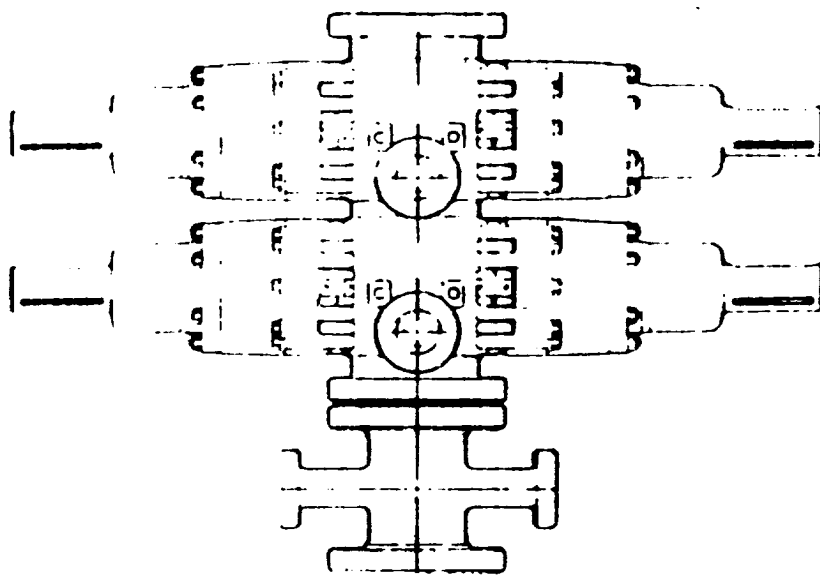


# BLOW OUT PREVENTION EQUIPMENT



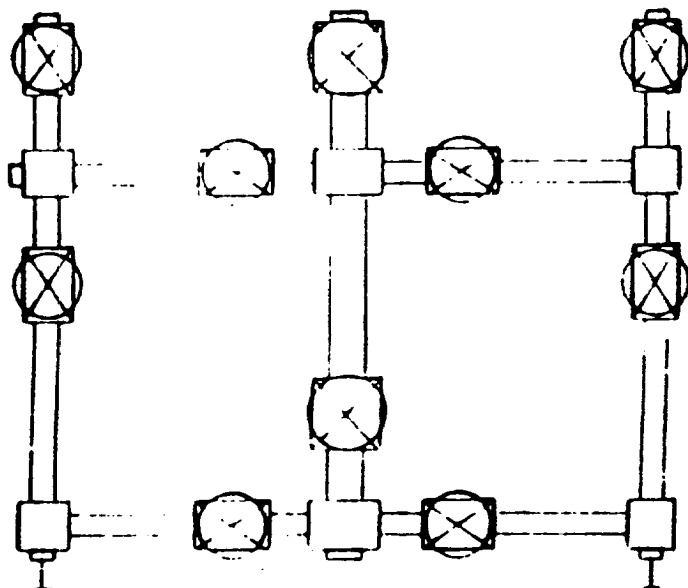
## BOP Stack

- 1 Rucker Shaffer "B" double ram  
10" x 3000 psi WP

## Closing Unit

- Hydral model 80 three station  
accumulator
- Controls located in accumulator  
house and on rig floor

## CHOKE MANIFOLD



900 Series, 3000 psi WP

PLAT #2