

UNITED STATES
DEPARTMENT OF THE INTERIOR
BUREAU OF LAND MANAGEMENT

N. M. Oil & Gas Division
811 S. 1ST ST.
ARTESIA, NM 88210-2804

APPLICATION FOR PERMIT TO DRILL OR DEEPEN

1a. TYPE OF WORK

DRILL ☒

DEEPEN ☐

JP 11/17/97

b. TYPE OF WELL

OIL WELL ☒

Gas Well ☐

OTHER

SINGLE ZONE ☒

MULTIPLE ZONE ☐

2. NAME OF OPERATOR

Mack Energy Corporation

13837

3. ADDRESS AND TELEPHONE NO

P.O. Box 960, Artesia, NM 88211-0960

(505) 748-1288

4. LOCATION OF WELL (Report location clearly and in accordance with any state requirement.)*

At surface

990 FNL & 680 FEL

At proposed prod. zone

990 FNL & 680 FEL

Ut. A

RECEIVED
OCD ARTESIA

14. DISTANCE IN MILES AND DIRECTION FROM NEAREST TOWN OR POST OFFICE*

15. DISTANCE FROM PROPOSED*
LOCATION TO NEAREST
PROPERTY OR LEASE LINE, FT.
(Also to nearest drlg. unit line, if any)

640

16. NO. OF ACRES IN LEASE
320

17. NO. OF ACRES IN LEASE
TO THIS WELL

40

18. DISTANCE FROM PROPOSED LOCATION*
TO NEAREST WELL, DRILLING, COMPLETED
OR APPLIED FOR, ON THIS LEASE, FT.

1138

19. PROPOSED DEPTH
5000

20. ROTARY OR CABLE TOOLS
Rotary

21. ELEVATIONS (Show whether DF, RT, GR, etc.)

3573 GR

22. APPROX. DATE WORK WILL START*

12/26/97

23.

PROPOSED CASING AND CEMENTING

ROSWELL CONTROLLED WATER BASIN

SIZE OF HOLE	GRADE, SIZE OF CASING	WEIGHT PER FOOT	SETTING DEPTH	QUANTITY OF CEMENT
17 1/2	13 3/8, k-55	48	300	Circ
12 1/4	K-55, 8 5/8	24	* 450 800	Circ
7 7/8	J-55, 5 1/2	17	5000	Suff. to Circ.

Mack Energy proposes to drill to a depth sufficient to test the Empire Yeso and San Andres formation for oil. If productive, 5 1/2" casing will be cemented. If non-productive, the well will be plugged and abandoned in a manor consistent with federal regulation. Specific programs as per Onshore Oil and Gas Order #1 are outlined in the following attachments:

APPROVAL SUBJECT TO
GENERAL REQUIREMENTS AND
SPECIAL STIPULATIONS

Drilling Program

Surface Use & Operating Plan

Exhibit #4 - One- Mile Radius Map

Exhibit #1 & 1A - Blowout Preventer Equipment

Exhibit #5 - Production Facilities Layout

Exhibit #2 - Location and Elevation Plat

Exhibit #6 - Location Layout

Exhibit #3 - Planned Access Road

Exhibit #7 - H2S Drilling Operations Plan

*SPOKE WITH MATTHEW BREWER 1/6/98 - 85/8" STRING WILL BE 800' IN LENGTH L. Bohyak
IN ABOVE SPACE DESCRIBE PROPOSED PROGRAM: If proposal is to deepen, give data on present productive zone and proposed new productive zone. If proposal is to drill or deepen directionally, give pertinent data on subsurface locations and measured and true vertical depths. Give blowout preventer program, if any.

24.

SIGNED

Matthew Brewer

TITLE

Engineer

DATE

11/13/97

(This space for Federal or State office use)

PERMIT NO.

APPROVAL DATE

Application approval does not warrant or certify that the applicant holds legal or equitable title to those rights in the subject lease which would entitle the applicant to conduct operations thereon.

CONDITIONS OF APPROVAL, IF ANY:

APPROVED BY

(Signature)

TITLE

ADA MINERALS

DATE

1/12/98

*See Instructions On Reverse Side

DISTRICT I
P.O. Box 1980, Hobbs, NM 88241-1980

DISTRICT II
P.O. Drawer DD, Artesia, NM 88211-0719

DISTRICT III
1000 Rio Brazos Ed., Artesia, NM 87410

DISTRICT IV
P.O. Box 2088, Santa Fe, NM 87504-2088

State of New Mexico
Energy, Minerals and Natural Resources Department

Form C-102
Revised February 10, 1994
Submit to Appropriate District Office
State Lease - 4 Copies
Fee Lease - 3 Copies

OIL CONSERVATION DIVISION
P.O. Box 2088
Santa Fe, New Mexico 87504-2088

☐ AMENDED REPORT

WELL LOCATION AND ACREAGE DEDICATION PLAT

API Number		Pool Code	Pool Name	
			Empire Yeso	
Property Code	Property Name			Well Number
21134	PINON FEDERAL			4
OGRID No.	Operator Name			Elevation
013837	MACK ENERGY CORPORATION			3573

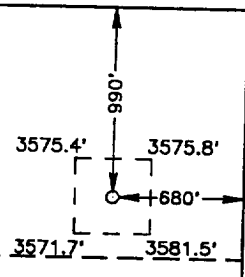
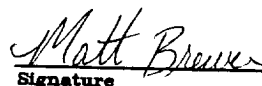
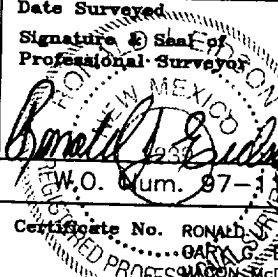
Surface Location

UL or lot No.	Section	Township	Range	Lot Idn	Feet from the	North/South line	Feet from the	East/West line	County
A	22	17 S	29 E		990	NORTH	680	EAST	EDDY

Bottom Hole Location If Different From Surface

UL or lot No.	Section	Township	Range	Lot Idn	Feet from the	North/South line	Feet from the	East/West line	County
Dedicated Acres		Joint or Infill	Consolidation Code	Order No.					
40									

NO ALLOWABLE WILL BE ASSIGNED TO THIS COMPLETION UNTIL ALL INTERESTS HAVE BEEN CONSOLIDATED
OR A NON-STANDARD UNIT HAS BEEN APPROVED BY THE DIVISION

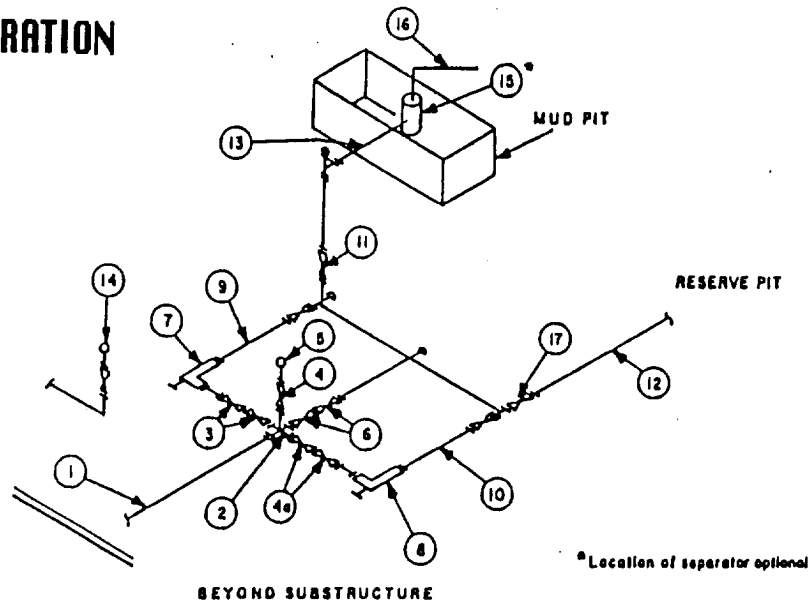
	OPERATOR CERTIFICATION I hereby certify the the information contained herein is true and complete to the best of my knowledge and belief.  Signature Matt Brewer Printed Name Engineer Title 11-13-97 Date	
	SURVEYOR CERTIFICATION I hereby certify that the well location shown on this plat was plotted from field notes of actual surveys made by me or under my supervision, and that the same is true and correct to the best of my belief. OCTOBER 27, 1997 Date Surveyed Signature & Seal of Professional Surveyor  W.O. Num. 97-11-1730 Certificate No. RONALD J. EIDSON, 3239 GARY C. EIDSON, 12641 RONALD J. EIDSON, 12185	

Attachment to Exhibit #1
NOTES REGARDING THE BLOWOUT PREVENTERS
Pinon Federal #4
Eddy County, New Mexico

1. Drilling nipple to be so constructed that it can be removed without use of a welder through rotary table opening, with minimum I.D. equal to preventer bore.
2. Wear ring to be properly installed in head.
3. Blow out preventer and all fittings must be in good condition, 2000 psi W.P. minimum.
4. All fittings to be flanged.
5. Safety valve must be available on rig floor at all times with proper connections, valve to be full 2000 psi W.P. minimum.
6. All choke and fill lines to be securely anchored, especially ends of choke lines.
7. Equipment through which bit must pass shall be at least as large as the diameter of the casing being drilled through.
8. Kelly cock on Kelly.
9. Extension wrenches and hand wheels to be properly installed.
10. Blow out preventer control to be located as close to driller's position as feasible.
11. Blow out preventer closing equipment to include minimum 40 gallon accumulator, two independent sources of pump power on each closing unit installation all API specifications.

MINIMUM CHOKE MANIFOLD
 3,000, 5,000 and 10,000 PSI Working Pressure
2M will be used, or greater
 3 MWP • 5 MWP • 10 MWP

MACK ENERGY CORPORATION
EXHIBIT #1-A



MINIMUM REQUIREMENTS										
No.		3,000 MWP			5,000 MWP			10,000 MWP		
		I.D.	NOMINAL	RATING	I.D.	NOMINAL	RATING	I.D.	NOMINAL	RATING
1	Line from drilling spool		3"	3,000		3"	5,000		3"	10,000
2	Cross 3"x3"x3"x2"			3,000			5,000			
	Cross 3"x3"x3"x3"									10,000
3	Valves(1) Gate <input type="checkbox"/> Plug <input type="checkbox"/> (2)	3-1/8"		3,000	3-1/8"		5,000	3-1/8"		10,000
4	Valve Gate <input type="checkbox"/> Plug <input type="checkbox"/> (2)	1-13/16"		3,000	1-13/16"		5,000	1-13/16"		10,000
4a	Valves(1)	2-1/16"		3,000	2-1/16"		5,000	3-1/8"		10,000
5	Pressure Gauge			3,000			5,000			10,000
6	Valves Gate <input type="checkbox"/> Plug <input type="checkbox"/> (2)	3-1/8"		3,000	3-1/8"		5,000	3-1/8"		10,000
7	Adjustable Choke(3)	2"		3,000	2"		5,000	2"		10,000
8	Adjustable Choke	1"		3,000	1"		5,000	2"		10,000
9	Line		3"	3,000		3"	5,000		3"	10,000
10	Line		2"	3,000		2"	5,000		3"	10,000
11	Valves Gate <input type="checkbox"/> Plug <input type="checkbox"/> (2)	3-1/8"		3,000	3-1/8"		5,000	3-1/8"		10,000
12	Lines		3"	1,000		3"	1,000		3"	2,000
13	Lines		3"	1,000		3"	1,000		3"	2,000
14	Remote reading compound standpipe pressure gauge			3,000			5,000			10,000
15	Gas Separator		2'x5'			2'x5'			2'x5'	
16	Line		4"	1,000		4"	1,000		4"	2,000
17	Valves Gate <input type="checkbox"/> Plug <input type="checkbox"/> (2)	3-1/8"		3,000	3-1/8"		5,000	3-1/8"		10,000

(1) Only one required in Class 3M.

(2) Gate valves only shall be used for Class 10M.

(3) Remote operated hydraulic choke required on 5,000 psi and 10,000 psi for drilling.

EQUIPMENT SPECIFICATIONS AND INSTALLATION INSTRUCTIONS

- All connections in choke manifold shall be welded, studded, flanged or Cameron clamp of comparable rating.
- All flanges shall be API 6B or 6BX and ring gaskets shall be API RX or BX. Use only BX for 10 MWP.
- All lines shall be securely anchored.
- Chokes shall be equipped with tungsten carbide seats and needles, and replacements shall be available.
- Choke manifold pressure and standpipe pressure gauges shall be available at the choke manifold to assist in regulating chokes. As an alternate with automatic chokes, a choke manifold pressure gauge shall be located on the rig floor in conjunction with the standpipe pressure gauge.
- Line from drilling spool to choke manifold should be as straight as possible. Lines downstream from chokes shall make turns by large bends or 90° bends using bull plugged tees.

MINIMUM BLOWOUT PREVENTER REQUIREMENTS

2,000 psi Working Pressure

2 MWP

MACK ENERGY CORPORATION EXHIBIT #1-A

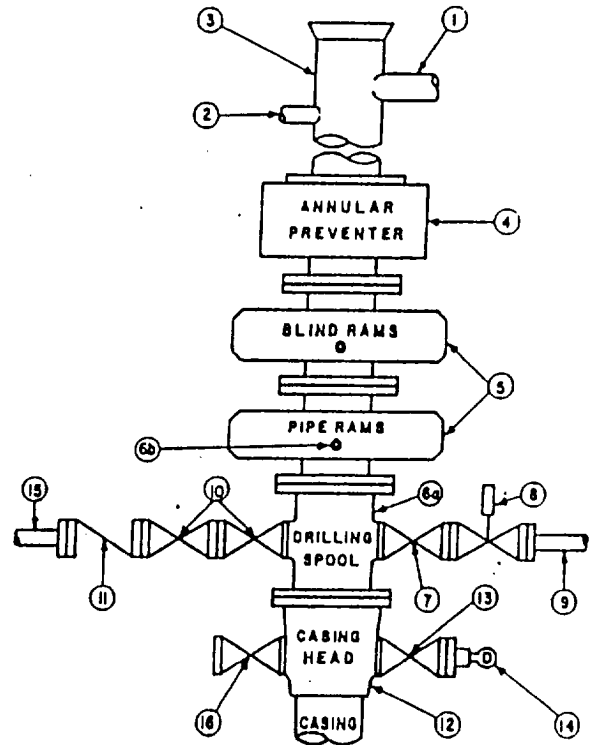
STACK REQUIREMENTS

No.	Item	Min. I.D.	Min. Nominal
1	Flowline		
2	Fill up line		2"
3	Drilling nipple		
4	Annular preventer		
5	Two single or one dual hydraulically operated rams		
6a	Drilling spool with 2" min. kill line and 3" min choke line outlets		2" Choke
6b	2" min. kill line and 3" min. choke line outlets in ram. (Alternate to 6a above.)		
7	Valve Gate <input type="checkbox"/> Plug <input type="checkbox"/>	3-1/8"	
8	Gate valve—power operated	3-1/8"	
9	Line to choke manifold		3"
10	Valves Gate <input type="checkbox"/> Plug <input type="checkbox"/>	2-1/16"	
11	Check valve	2-1/16"	
12	Casing head		
13	Valve Gate <input type="checkbox"/> Plug <input type="checkbox"/>	1-13/16"	
14	Pressure gauge with needle valve		
15	Kill line to rig mud pump manifold		2"

OPTIONAL

16	Flanged valve	1-13/16"	
----	---------------	----------	--

CONFIGURATION A



CONTRACTOR'S OPTION TO FURNISH:

1. All equipment and connections above bradenhead or casinghead. Working pressure of preventers to be 2,000 psi, minimum.
2. Automatic accumulator (80 gallon, minimum) capable of closing BOP in 30 seconds or less and, holding them closed against full rated working pressure.
3. BOP controls, to be located near drillers position.
4. Kelly equipped with Kelly cock.
5. Inside blowout preventer or its equivalent on derrick floor at all times with proper threads to fit pipe being used.
6. Kelly saver-sub equipped with rubber casing protector at all times.
7. Plug type blowout preventer tester.
8. Extra set pipe rams to fit drill pipe in use on location at all times.
9. Type RX ring gaskets in place of Type R.

MEC TO FURNISH:

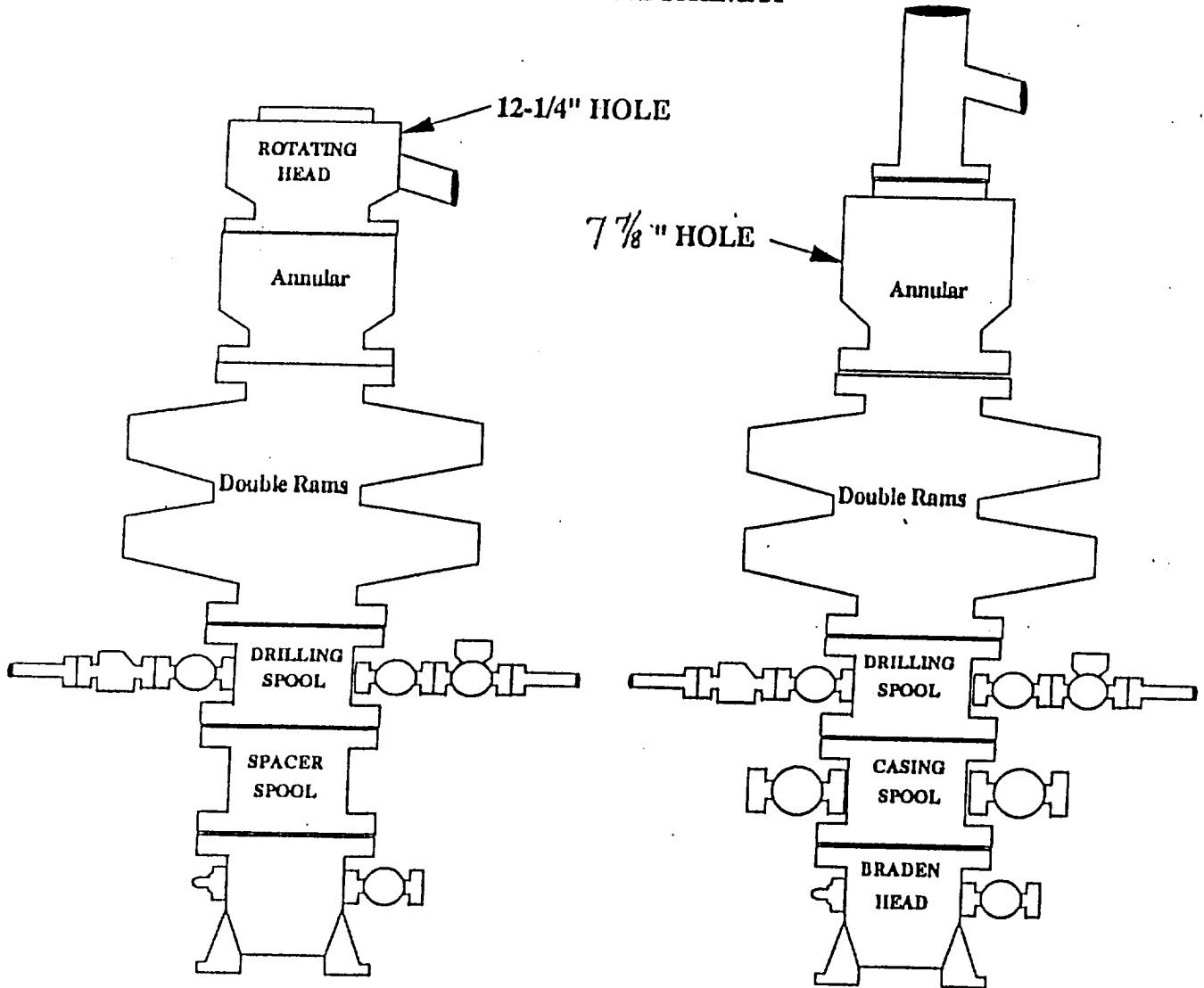
1. Bradenhead or casinghead and side valves.
2. Wear bushing, if required.

GENERAL NOTES:

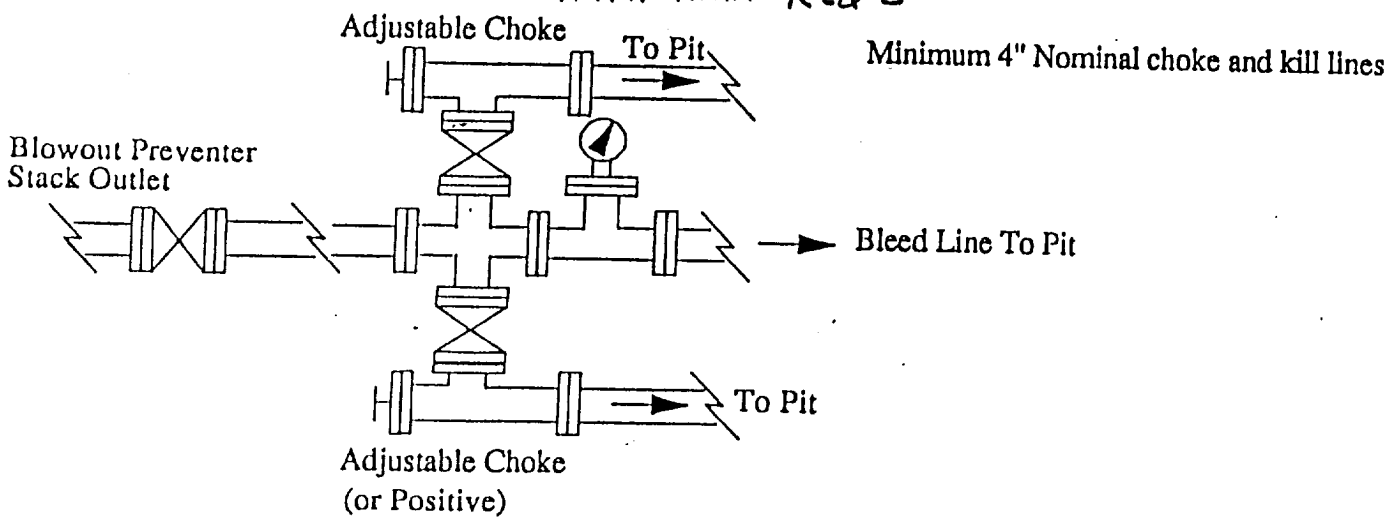
1. Deviations from this drawing may be made only with the express permission of MEC's Drilling Manager.
2. All connections, valves, fittings, piping, etc., subject to well or pump pressure must be flanged (suitable clamp connections acceptable) and have minimum working pressure equal to rated working pressure of preventers up through chokes. Valves must be full opening and suitable for high pressure mud service.
3. Controls to be of standard design and each marked, showing opening and closing position.
4. Chokes will be positioned so as not to hamper or delay changing of choke beans. Replaceable parts for adjustable choke, other bean sizes, retainers, and choke wrenches to be conveniently located for immediate use.
5. All valves to be equipped with handwheels or handles ready for immediate use.
6. Choke lines must be suitably anchored.

7. Handwheels and extensions to be connected and ready for use.
8. Valves adjacent to drilling spool to be kept open. Use outside valves except for emergency.
9. All seamless steel control piping (2,000 psi working pressure) to have flexible joints to avoid stress. Hoses will be permitted.
10. Casinghead connections shall not be used except in case of emergency.
11. Do not use kill line for routine fill-up operations.

BOPE SCHEMAT



Choke Manifold Requirement (2000 psi WP)
 NO ANNULAR REQ'D



MACK ENERGY CORPORATION
 EXHIBIT #1-A