

District I  
PO Box 1980, Hobbs, NM 88241-1980  
District II  
PO Drawer DD, Artesia, NM 88211-0719  
District III  
1000 Rio Brazos Rd., Aztec, NM 87410  
District IV  
PO Box 2088, Santa Fe, NM 87504-2088

State of New Mexico  
Energy, Minerals & Natural Resources Department

OIL CONSERVATION DIVISION  
PO Box 2088  
Santa Fe, NM 87504-2088

Form C-101  
Revised February 10, 1994  
Instructions on back  
Submit to Appropriate District Office  
State Lease - 6 Copies  
Fee Lease - 5 Copies

☐ AMENDED REPORT

APPLICATION FOR PERMIT TO DRILL, RE-ENTER, DEEPEN, PLUGBACK, OR ADD A ZONE

Operator Name and Address: Sonat Exploration Co. - Midland 110 W. Louisiana, Suite 500 Midland, Tx 79701		OGRID Number 109487
Property Name Todd "2" State		API Number 30-015-38072
Property Code 17914	Well No. 6	

7 Surface Location

UL or lot no.	Section	Township	Range	Lot Idn	Feet from the	North/South line	Feet from the	East/West line	County
1	2	24S	31E		660	north	660	east	Eddy

8 Proposed Bottom Hole Location If Different From Surface

UL or lot no.	Section	Township	Range	Lot Idn	Feet from the	North/South line	Feet from the	East/West line	County
Proposed Pool 1 Ingle Wells; Delaware 33745					Proposed Pool 2				

Work Type Code N	Well Type Code O	Cable/Rotary R	Lease Type Code S	Ground Level Elevation 3516'
Multiple N	Proposed Depth 8,700'	Formation Delaware	Contractor n/a	Spud Date 1st Qtr 1998

21 Proposed Casing and Cement Program

Hole Size	Casing Size	Casing weight/foot	Setting Depth	Sacks of Cement	Estimated TOC
14-3/4"	11-3/4"	42# WC-40	670'	Suff to circ	surface
11"	8-5/8"	24# J55	4,300'	Suff to circ	surface
7-7/8"	5-1/2"	17# J55	8,700	2100 sx	500'

Describe the proposed program. If this application is to DEEPEN or PLUG BACK give the data on the present productive zone and proposed new productive zone. Describe the blowout prevention program, if any. Use additional sheets if necessary.

This proposed well is a Delaware test.

B. O. P. sketch is attached.

Part FD-1  
2-26-98  
API 4 Loc



I hereby certify that the information given above is true and complete to the best of my knowledge and belief.

Signature:

Printed name:

Title:

Date:

Phone:

Approved by:

Title:

Approval Date:

Conditions of Approval:

Attached ☐

OIL CONSERVATION DIVISION

ORIGINAL SIGNED BY TIM W. GUM  
DISTRICT II SUPERVISOR

Expiration Date:

2/6/98

915/684-0400

FEB 18 1998

2-18-99

DISTRICT I  
P.O. Box 1980, Hobbs, NM 88241-1980

State of New Mexico  
Energy, Minerals and Natural Resources Department

Form C-102  
Revised February 10, 1994  
Submit to Appropriate District Office  
State Lease - 4 Copies  
Fee Lease - 3 Copies

DISTRICT II  
P.O. Drawer 80, Artesia, NM 88211-0719

DISTRICT III  
1000 Rio Brazos Rd., Aztec, NM 87410

DISTRICT IV  
P.O. Box 2088, Santa Fe, NM 87504-2088

OIL CONSERVATION DIVISION

P.O. Box 2088  
Santa Fe, New Mexico 87504-2088

☐ AMENDED REPORT

WELL LOCATION AND ACREAGE DEDICATION PLAT

API Number	Pool Code 33745	Pool Name Ingel Wells; Delaware
Property Code 17914	Property Name TODD "2" STATE	Well Number 6
OGRID No. 109487	Operator Name SONAT EXPLORATION COMPANY	Elevation 3516

Surface Location

UL or lot No. 1	Section 2	Township 24 S	Range 31 E	Lot Idn	Feet from the 660	North/South line NORTH	Feet from the 660	East/West line EAST	County EDDY
--------------------	--------------	------------------	---------------	---------	----------------------	---------------------------	----------------------	------------------------	----------------

Bottom Hole Location If Different From Surface

UL or lot No.	Section	Township	Range	Lot Idn	Feet from the	North/South line	Feet from the	East/West line	County
---------------	---------	----------	-------	---------	---------------	------------------	---------------	----------------	--------

Dedicated Acres 40	Joint or Infill	Consolidation Code	Order No.
-----------------------	-----------------	--------------------	-----------

NO ALLOWABLE WILL BE ASSIGNED TO THIS COMPLETION UNTIL ALL INTERESTS HAVE BEEN CONSOLIDATED  
OR A NON-STANDARD UNIT HAS BEEN APPROVED BY THE DIVISION

LOT 4 39.99 AC.	LOT 3 39.98 AC.	LOT 2 39.96 AC.	LOT 1 39.95 AC.

660'

660'

**OPERATOR CERTIFICATION**

I hereby certify the the information contained herein is true and complete to the best of my knowledge and belief.

Laura Clepper  
Signature

Laura Clepper  
Printed Name

Engineering Technician  
Title

2/6/98  
Date

**SURVEYOR CERTIFICATION**

I hereby certify that the well location shown on this plat was plotted from field notes of actual surveys made by me or under my supervision, and that the same is true and correct to the best of my belief.

FEBRUARY 2, 1998

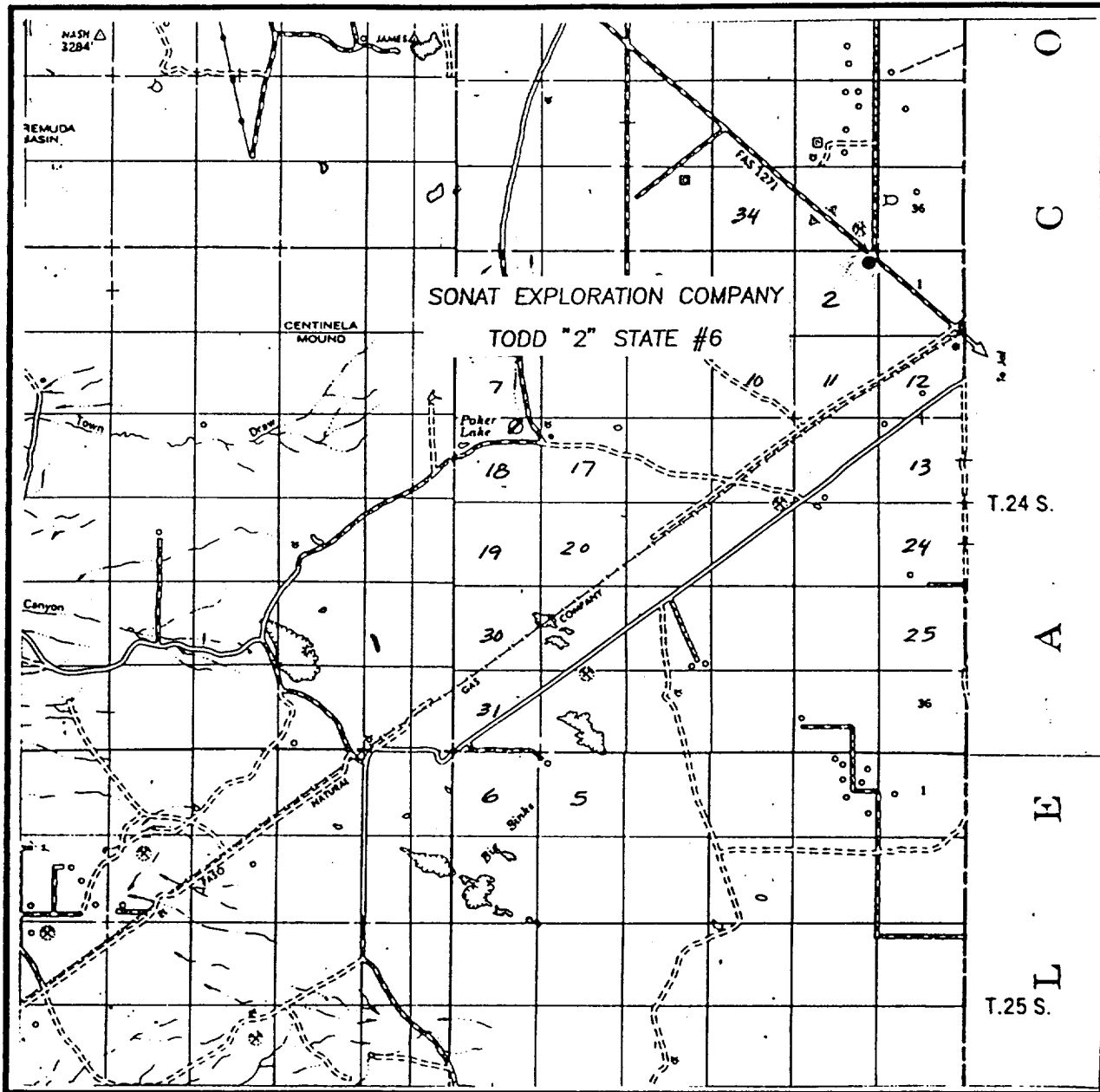
Date Surveyed JLP

Signature & Seal of Professional Surveyor

Ronald E. Edson  
W.O. Num. 98-11-0146

Certificate No. RONALD E. EDSON, 3239  
GARY B. EDSON, 12841  
MAYNARD McDONALD, 12185

# VICINITY MAP



SCALE: 1" = 2 MILES

SEC. 2 TWP. 24-S RGE. 31-E

SURVEY N.M.P.M.

COUNTY EDDY

DESCRIPTION 660' FNL & 660' FEL

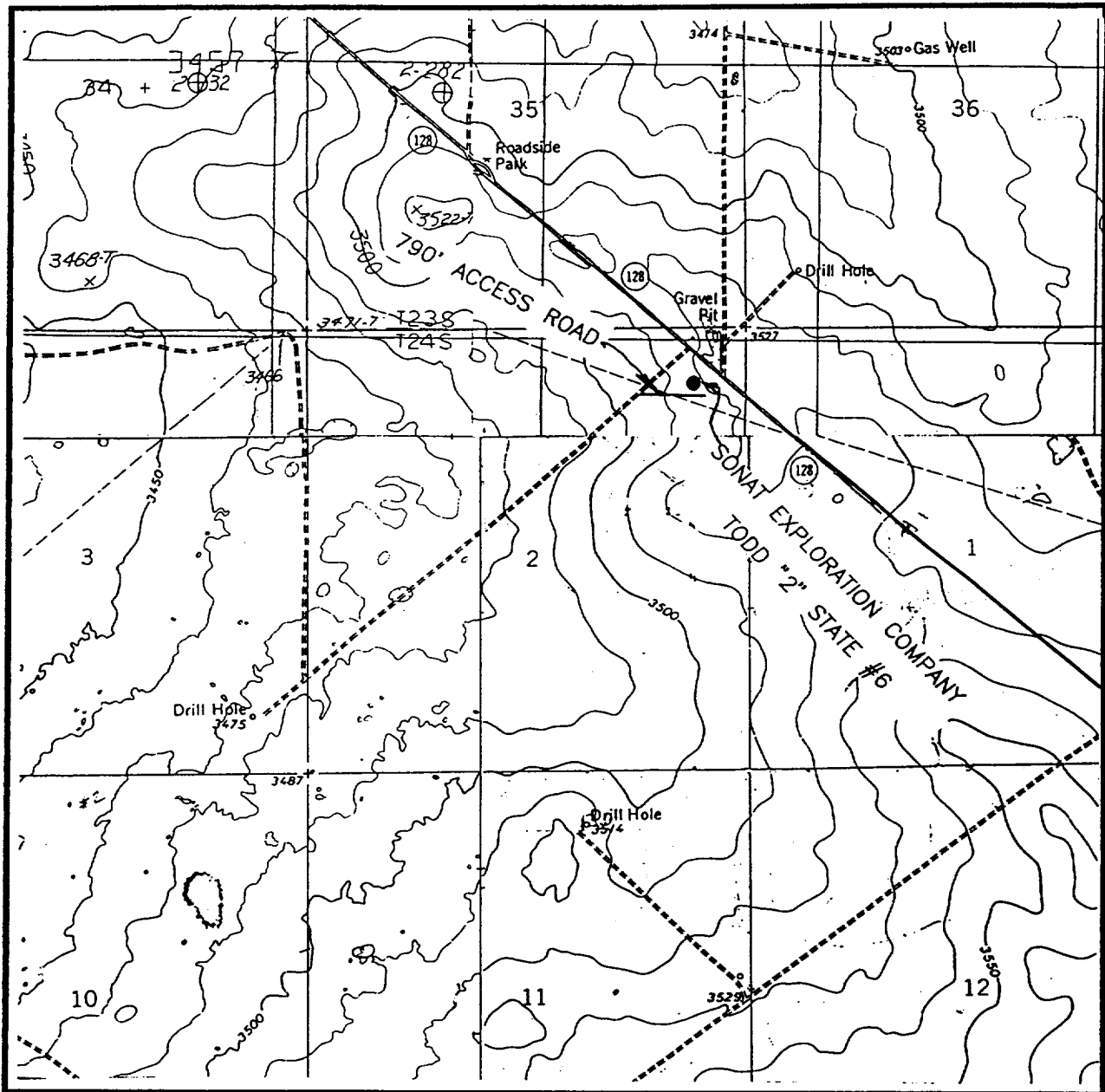
ELEVATION 3516'

OPERATOR SONAT EXPLORATION COMPANY

LEASE TODD "2" STATE

**JOHN WEST ENGINEERING**  
**HOBBS, NEW MEXICO**  
**(505) 393-3117**

# LOCATION VERIFICATION MAP



SCALE: 1" = 2000'

CONTOUR INTERVAL - 10'

SEC. 2 TWP. 24-S RGE. 31-E

SURVEY N.M.P.M.

COUNTY EDDY

DESCRIPTION 660' FNL & 660' FEL

ELEVATION 3516'

OPERATOR SONAT EXPLORATION COMPANY

LEASE TODD #2 STATE

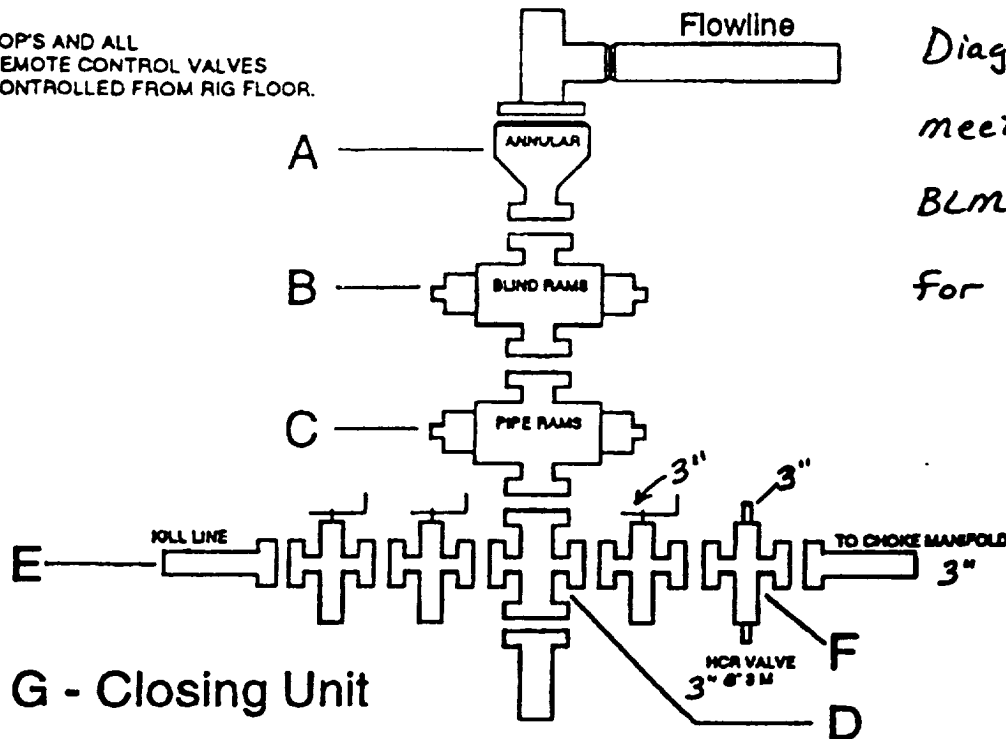
U.S.G.S. TOPOGRAPHIC MAP

PADUCA BREAKS NW, HAT MESA, NASH DRAW, BIG SINKS, N.M.

**JOHN WEST ENGINEERING**  
**HOBBS, NEW MEXICO**  
**(505) 393-3117**

**SONAT EXPLORATION****West ~~SONAT~~ TEXAS BUSINESS UNIT****Minimum Requirements for a 3,000 psi BOP  
Stack Manifold & Closing System**

BOP'S AND ALL  
REMOTE CONTROL VALVES  
CONTROLLED FROM RIG FLOOR.



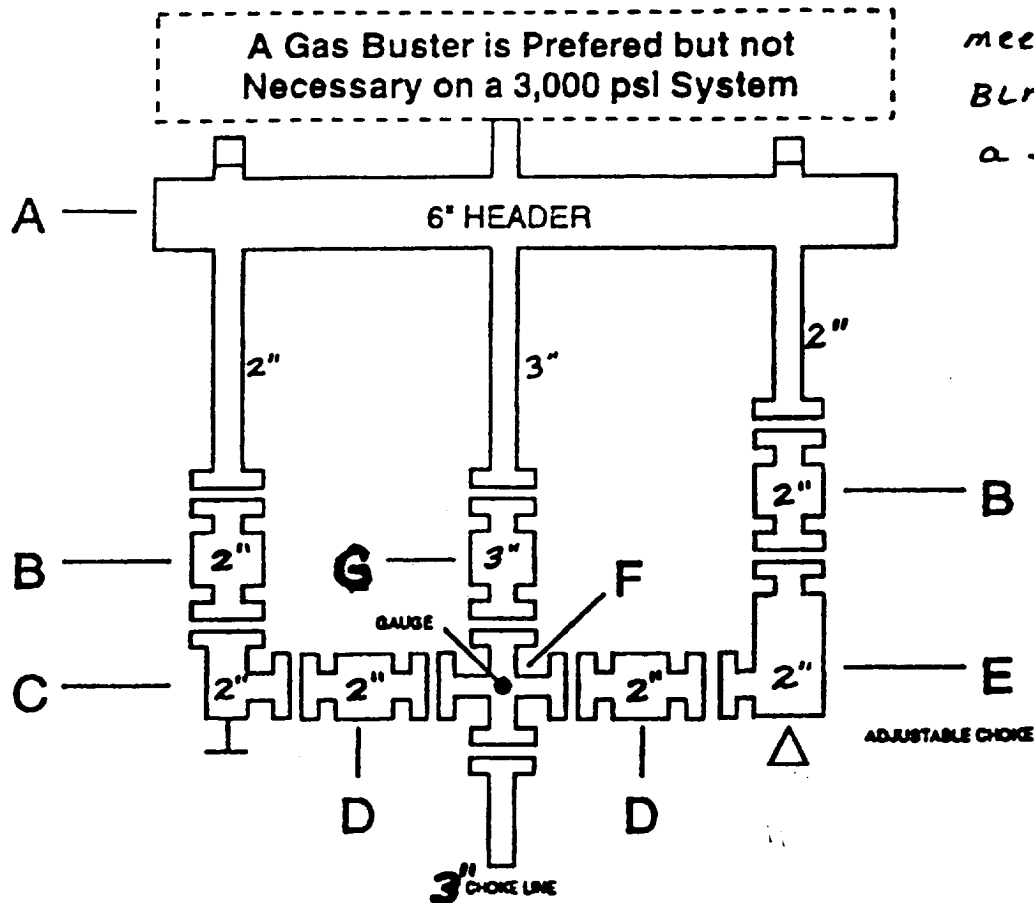
*Diagram as shown  
meets the minimum  
BLM requirements  
for a 3M stack.*

- G - Closing Unit**
- A. Annular BOP Must be 3000 psi Working Pressure.
  - B. Blind Rams Between Annular & Pipe Rams w/ 3000 psi Working Pressure.
  - C. Pipe Rams Below Blind Rams w/ 3000 psi Working Pressure.
  - Note: All Rams & Spools Must Meet Required I.D. for Hole Size.
  - D. Drilling Spool w/ 2 Outlets for Choke Line & Kill Line
  - E. Kill Line 2" 3 M w/ 2 Manual Valves Bolted & Flanged Below Bottom Pipe Rams. Either a Drilling Spool or the Outlet on the BOP Stack can be Used to Accommodate Kill Line and Choke Line.
  - F. Choke Line w/ 3" 3 M Valves. Inside Valve can be Manual but the Outside Valve Must be Hydraulic (HCR). Choke Line Must be 3" 3 M.
  - G. Closing Unit (Kooimey) w/ a Primary & Secondary Pressure Supply to Operate the BOP Stack. Also a N<sub>2</sub> Supply will be Provided as a Final Source of Operation to Close the BOP Stack. This Unit is Required to Contain a minimum of 1 1/2 Times the Needed Volume to Operate the BOP Stack at All Times. The Precharge of N<sub>2</sub> will be Checked Prior to Commencing Work for SONAT.

**SONAT EXPLORATION****West ██████████ TEXAS BUSINESS UNIT**

Minimum Requirements for a  
3,000 psi BOP Stack Manifold

Diagram as shown  
meets the minimum  
BLM requirements +  
a 3M stack.



- A. Header for Gas Expansion 6" O.D. Tube.
- B. 2" 3 M Manual Valves on Down Stream Side of Choke.
- C. 2" 3 M Manual Adjustable or Positive Choke.
- D. 2" 3 M Manual Valve
- E. 2" 3 M Adjustable w/ Remote Station
- F. 3" 3 M Tee w/ Gauge in Top Side 3" Choke Line

Note: All Pipe Will be Flanged & Welded. No Screwed Connections.

G. 3" 3M Manual Valve