

UNITED STATES  
DEPARTMENT OF THE INTERIOR  
BUREAU OF LAND MANAGEMENTSUBMIT IN TRIPLICATE  
N. M. Oil & Gas Division  
811 S. 1<sup>ST</sup>.  
ARTESIA, NM 88413-0834FORM APPROVED  
OMB NO. 1004-0136  
Expires: February 28, 1995

## APPLICATION FOR PERMIT TO DRILL OR DEEPEN

## 1a. TYPE OF WORK

DRILL ☒DEEPEN ☐

## b. TYPE OF WELL

OIL  
WELL ☐GAS  
WELL ☒OTHER ☐SINGLE  
ZONE ☒MULTIPLE  
ZONE ☐

## 2. NAME OF OPERATOR

147380

PENWELL ENERGY, INC. (BILL PIERCE) (915-683-2534)

## 3. ADDRESS AND TELEPHONE NO.

600 NORTH MARIENFELD SUITE 1100 MIDLAND, TEXAS 79701

## 4. LOCATION OF WELL (Report location clearly and in accordance with any State requirements.)

At surface

1650' FSL &amp; 990' FEL SEC. 17 T21S-R25E EDDY CO. NM

At proposed prod. zone

SAME

## 14. DISTANCE IN MILES AND DIRECTION FROM NEAREST TOWN OR POST OFFICE\*

Approximately 12 miles Northwest of Carlsbad New Mexico

## 15. DISTANCE FROM PROPOSED\*

LOCATION TO NEAREST  
PROPERTY OR LEASE LINE, FT.  
(Also to nearest drig. unit line, if any)

1650'

## 16. NO. OF ACRES IN LEASE

320

17. NO. OF ACRES ASSIGNED  
TO THIS WELL

320

18. DISTANCE FROM PROPOSED LOCATION\*  
TO NEAREST WELL, DRILLING, COMPLETED,  
OR APPLIED FOR, ON THIS LEASE, FT.

NA

## 19. PROPOSED DEPTH

APPROVAL SUBJECT TO

ROTARY

## 21. ELEVATIONS (Show whether DF, RT, GR, etc.)

3435' GR.

GENERAL REQUIREMENTS AND

SPECIAL STIPULATIONS

## 22. APPROX. DATE WORK WILL START\*

As soon as approved

## 23. PROPOSED CASING AND CEMENTING PROGRAM

| SIZE OF HOLE | GRADE SIZE OF CASING | WEIGHT PER FOOT | SETTING DEPTH | QUANTITY OF CEMENT              |
|--------------|----------------------|-----------------|---------------|---------------------------------|
| 25"          | Conductor            | NA              | 40'           | Cement to surface with Redi-mix |
| 17½"         | H-40 13 3/8"         | 48              | 400'          | 400 Sx. cement to surface       |
| 12½"         | J-55 9 5/8"          | 36              | 2600'         | 1200 Sx. " " " "                |
| 8 3/4"       | S-95, N-80 5½"       | 17              | 10,500'       | 1450 Sx. cement in two stages   |

1. Drill 25" hole to 40'. Set 40' of 20" conductor pipe and cement to surface with Redi-mix.
2. Drill 17½" hole to 400'. Run and set 400' of 13 3/8" 48# H-40 ST&C casing. Cement with 400 Sx. of Class "C" + 2% CaCl<sub>2</sub> + additives, circulate cement to surface.
3. Drill 12½" hole to 2600'. Run and set 2600' of 9 5/8" 36# J-55 ST&C casing. Cement with 900 Sx. of Class "C" Halco Light + additives, tail in with 300 Sx. of Class "C" + additives, circulate cement to surface.
4. Drill 8 3/4" hole to 10,500'. Run and set 10,500' of 5½" casing as follows: 700' of 17# S-95 LT&C, 5100' of 17# N-80, 1600' of 17# J-55, 3100' of 17# J-55 Buttruss. Cement in 2 stages. DV tool at 5000±' cement 1 st stage with 900 Sx. of Class "H" Halco light, tail in with 200 Sx of Class "H" + 1% CFR-2 + 8# salt/Sx. 2 nd stage with 350 Sx. Class "H" + additives, Estimate top of cement 2400'.

IN ABOVE SPACE DESCRIBE PROPOSED PROGRAM: If proposal is to deepen, give data on present productive zone and proposed new productive zone. If proposal is to drill or deepen directionally, give pertinent data on subsurface locations and measured and true vertical depths. Give blowout preventer program, if any.

24.

SIGNED

TITLE Agent

DATE 11/11/97

(This space for Federal or State office use)

PERMIT NO.

APPROVAL DATE

Application approval does not warrant or certify that the applicant holds legal or equitable title to those rights in the subject lease which would entitle the applicant to conduct operations thereon.  
CONDITIONS OF APPROVAL, IF ANY:

APPROVED BY (ORIG. SGD.) ARMANDO A. LOPEZ

TITLE

ADM. MINERALS

DATE

\*See Instructions On Reverse Side

RECEIVED  
1997 NOV 12 A 9:41  
JAMES H. L. HARRIS  
ROSWELL OFFICE

DISTRICT I  
P.O. Box 1980, Hobbs, NM 88240

DISTRICT II  
P.O. Drawer DD, Artesia, NM 88210

DISTRICT III  
1000 Rio Brazos Rd., Aztec, NM 87410

State of New Mexico  
Energy, Minerals and Natural Resources Department

Form C-102  
Revised February 10, 1994  
Instruction on back  
Submit to Appropriate District Office  
State Lease - 4 Copies  
Fee Lease - 3 Copies

OIL CONSERVATION DIVISION

P.O. Box 2088  
Santa Fe, New Mexico 87504-2088

☐ AMENDED REPORT

WELL LOCATION AND ACREAGE DEDICATION PLAT

|                     |  |                             |
|---------------------|--|-----------------------------|
| API Number          | Pool Code<br>74320                           | Pool Name<br>CATCLAW MORROW |
| Property Code       | Property Name<br>Peregrine "17" Federal Com. | Well Number<br>1            |
| OGRID No.<br>147380 | Operator Name<br>Penwell Energy Inc.         | Elevation<br>3435'          |

Surface Location

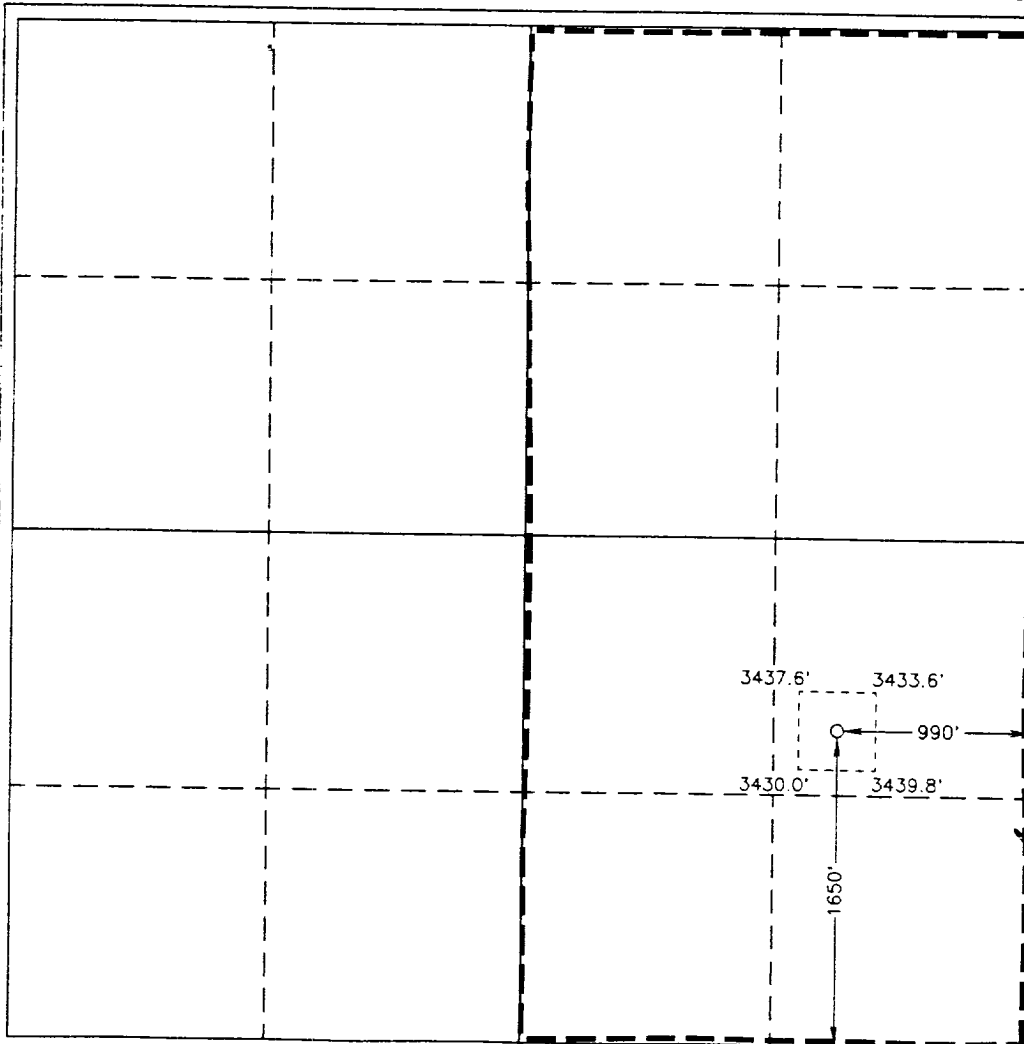
| UL or lot No. | Section | Township | Range | Lot Idn | Feet from the | North/South line | Feet from the | East/West line | County |
|---------------|---------|----------|-------|---------|---------------|------------------|---------------|----------------|--------|
| 1             | 17      | 21 S     | 25 E  |         | 1650          | South            | 990           | East           | Eddy   |

Bottom Hole Location If Different From Surface

| UL or lot No. | Section | Township | Range | Lot Idn | Feet from the | North/South line | Feet from the | East/West line | County |
|---------------|---------|----------|-------|---------|---------------|------------------|---------------|----------------|--------|
|               |         |          |       |         |               |                  |               |                |        |

| Dedicated Acres | Joint or Infill | Consolidation Code | Order No. |
|-----------------|-----------------|--------------------|-----------|
| 320             |                 |                    |           |

NO ALLOWABLE WILL BE ASSIGNED TO THIS COMPLETION UNTIL ALL INTERESTS HAVE BEEN CONSOLIDATED  
OR A NON-STANDARD UNIT HAS BEEN APPROVED BY THE DIVISION



OPERATOR CERTIFICATION

I hereby certify the the information  
contained herein is true and complete to the  
best of my knowledge and belief.

*Joe T. Janica*  
Signature

Joe T. Janica  
Printed Name

Agent  
Title

11/11/97  
Date

SURVEYOR CERTIFICATION

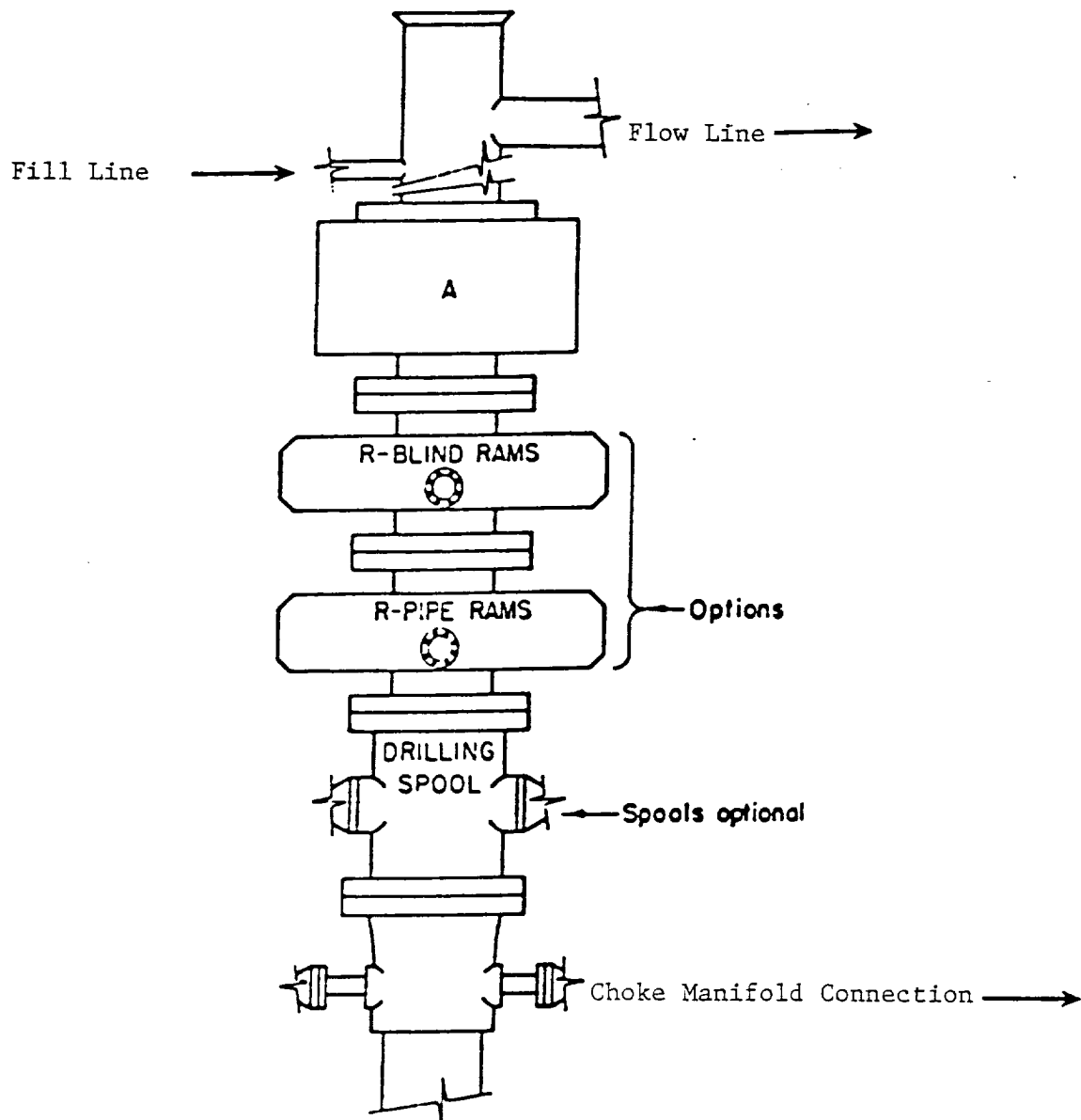
I hereby certify that the well location shown  
on this plat was plotted from field notes of  
actual surveys made by me or under my  
supervision, and that the same is true and  
correct to the best of my belief.

October 8, 1997

Date Surveyed  
Signature & Seal of  
Professional Surveyor

*Gary L. Jones*  
7977  
W.O. No. 75908  
Certificate No. Gary L. Jones 7977

BASIN SURVEYS



### ARRANGEMENT SRRA

1500 Series  
5000 PSI WP

EXHIBIT "E"  
B.O.P. SKETCH TO BE USED ON

PENWELL ENERGY, INC.  
PEREGRINE "17" FEDERAL COM. # 1  
UNIT "I" SECTION 17  
T21S-R25E EDDY CO. NM

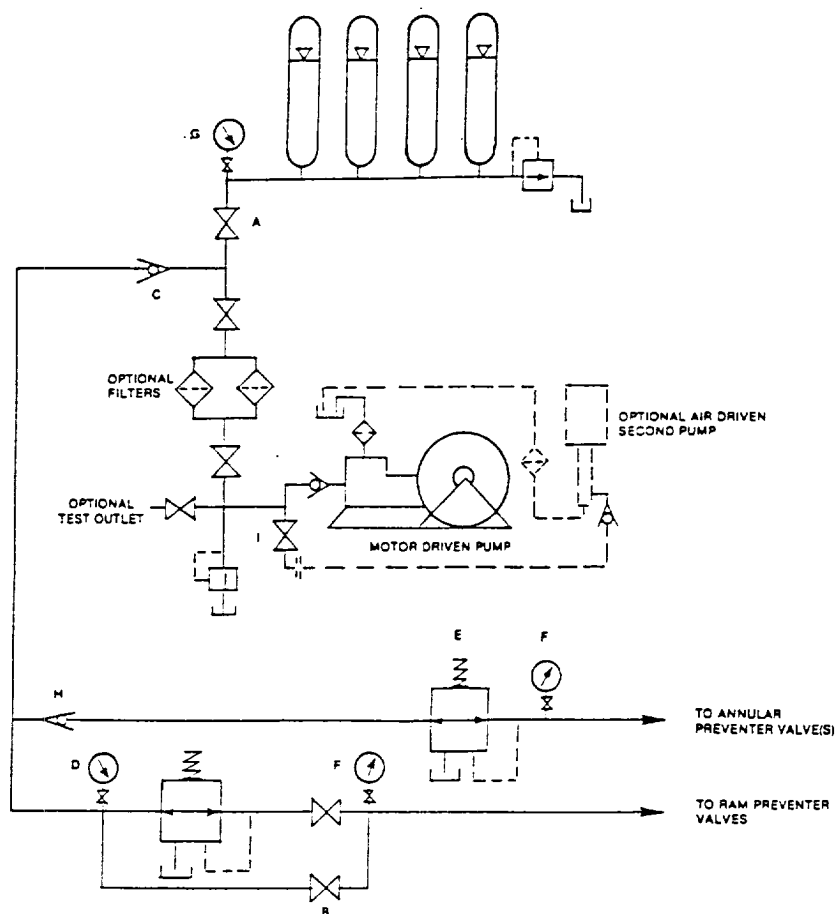


FIGURE K6-1. The schematic sketch of an accumulator system shows required and optional components.

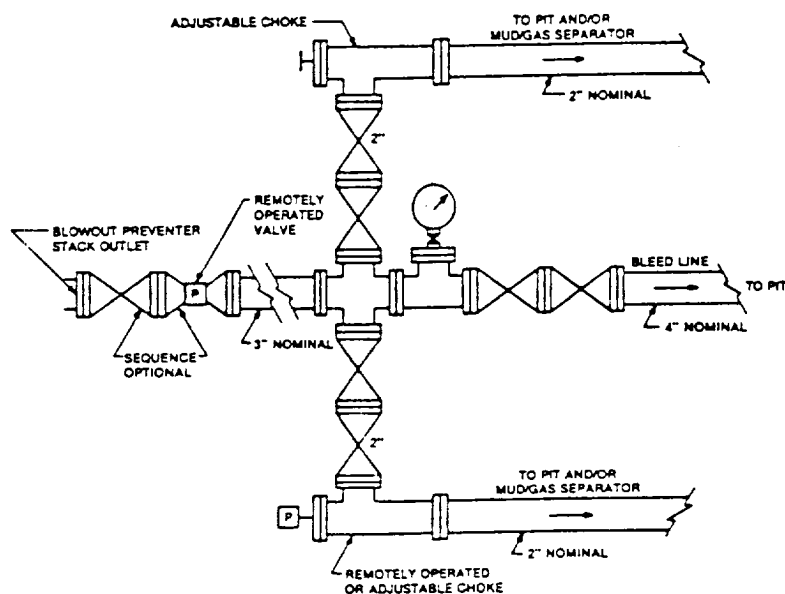


FIGURE K4-2. Typical choke manifold assembly for 5M rated working pressure service — surface installation.

EXHIBIT "E-1"  
CHOKE MANIFOLD & CLOSING UNIT

PENWELL ENERGY, INC.  
PEREGRINE "17" FEDERAL COM. # 1  
UNIT "I" SECTION 17  
T21S-R25E EDDY CO. NM