

District I
PO Box 1980, Hobbs, NM 88241-1980

District II
811 South First, Artesia, NM 88210

District III
1000 Rio Brazos Rd., Aztec, NM 87410

District IV
2040 South Pacheco, Santa Fe, NM 87505

State of New Mexico
Energy, Minerals & Natural Resources Department

OIL CONSERVATION DIVISION
2040 South Pacheco
Santa Fe, NM 87505

Form C-101
Revised October 18, 1994

Instructions on back
Submit to Appropriate District Office
State Lease - 6 Copies
Fee Lease - 5 Copies

☐ AMENDED REPORT

APPLICATION FOR PERMIT TO DRILL, RE-ENTER, DEEPEN, PLUGBACK, OR ADD A ZONE

Operator Name and Address SDX Resources, Inc. PO Box 5061 Midland, TX 79704 915/685-1761		GRID Number 020451
Property Name Artesia Unit		API Number 30 - 015 - 30185
Property Code 009811	Well No. 80	

Surface Location

UL or lot no.	Section	Township	Range	Lot Idn	Feet from the	North/South line	Feet from the	East/West Line	County
J	34	17S	28E		1770	South	2310	East	Eddy

Proposed Bottom Hole Location If Different From Surface

UL or lot no.	Section	Township	Range	Lot Idn	Feet from the	North/South line	Feet from the	East/West Line	County
Proposed Pool 1 Artesia QN-GB-SA (03230)					Proposed Pool 2				

Work Type Code N	Well Type Code O	Cable/Rotary R	Lease Type Code S	Ground Level Elevation 3666
Multiple No	Proposed Depth 3500	Formation SA	Contractor United Drig. Co.	Spud Date 4-15-98

Proposed Casing and Cement Program

Hole Size	Casing Size	Casing weight/foot	Setting Depth	Sacks of Cement	Estimated TOC
12-1/4"	8-5/8"	24#	300	275 sx	Surface
7-7/8"	4-1/2" - 5-1/2"	9.5 - 17#	3500	600 sx	Surface

Describe the proposed program. If this application is to DEEPEN or PLUG BACK give the data on the present productive zone and proposed new productive zone. Describe the blowout prevention program, if any. Use additional sheets if necessary.

Drill 12-1/4" hole to 300'. Set 8-5/8" casing to 300' and cement w/275 sx Class C cmt. Circ to surface. Drill 7-7/8" hole to TD (3500'). Run open hole logs. Set 4-1/2" or 5-1/2" csg to TD. Cmt w/600 sx Class C. Circ to surf. Will perf and stimulate as necessary for optimum production.

Posted ID-1
H.L. & API
4-10-98

I hereby certify that the information given above is true and complete to the best of my knowledge and belief.

Signature: Bonnie Atwater

Printed name: Bonnie Atwater

Title: Regulatory Tech. 3/18/98

OIL CONSERVATION DIVISION

Approved By:

SIGNED BY TIM W. GUN
DISTRICT II SUPERVISOR

Approval Date: 4-2-98

Expiration Date: 4-2-99

DISTRICT II
P.O. Drawer DD, Artesia, NM 88211-0719

DISTRICT III
1000 Rio Brazos Rd., Aztec, NM 87410

DISTRICT IV
P.O. BOX 2088, SANTA FE, N.M. 87504-2088

OIL CONSERVATION DIVISION

P.O. Box 2088
Santa Fe, New Mexico 87504-2088

☐ AMENDED REPORT

WELL LOCATION AND ACREAGE DEDICATION PLAT

API Number		Pool Code	Pool Name
		03230	Artesia, QN-GB-SA
Property Code	Property Name		Well Number
009811	ARTESIA UNIT		80
OGRID No.	Operator Name		Elevation
020451	SDX RESOURCES, INC.		3666'

Surface Location

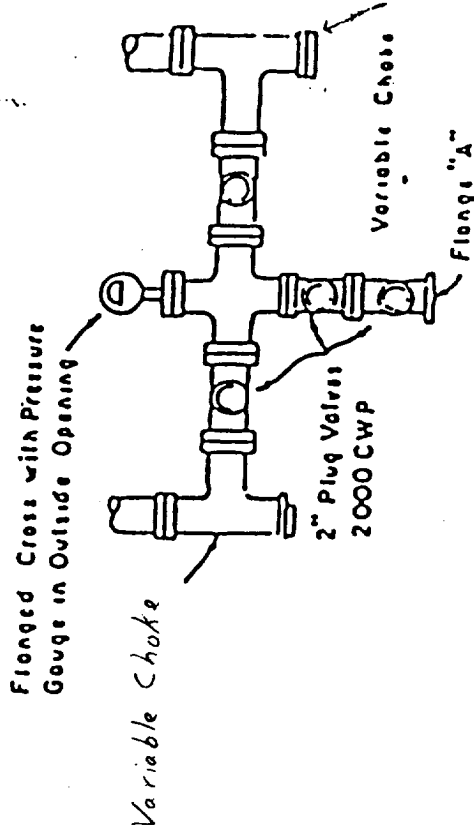
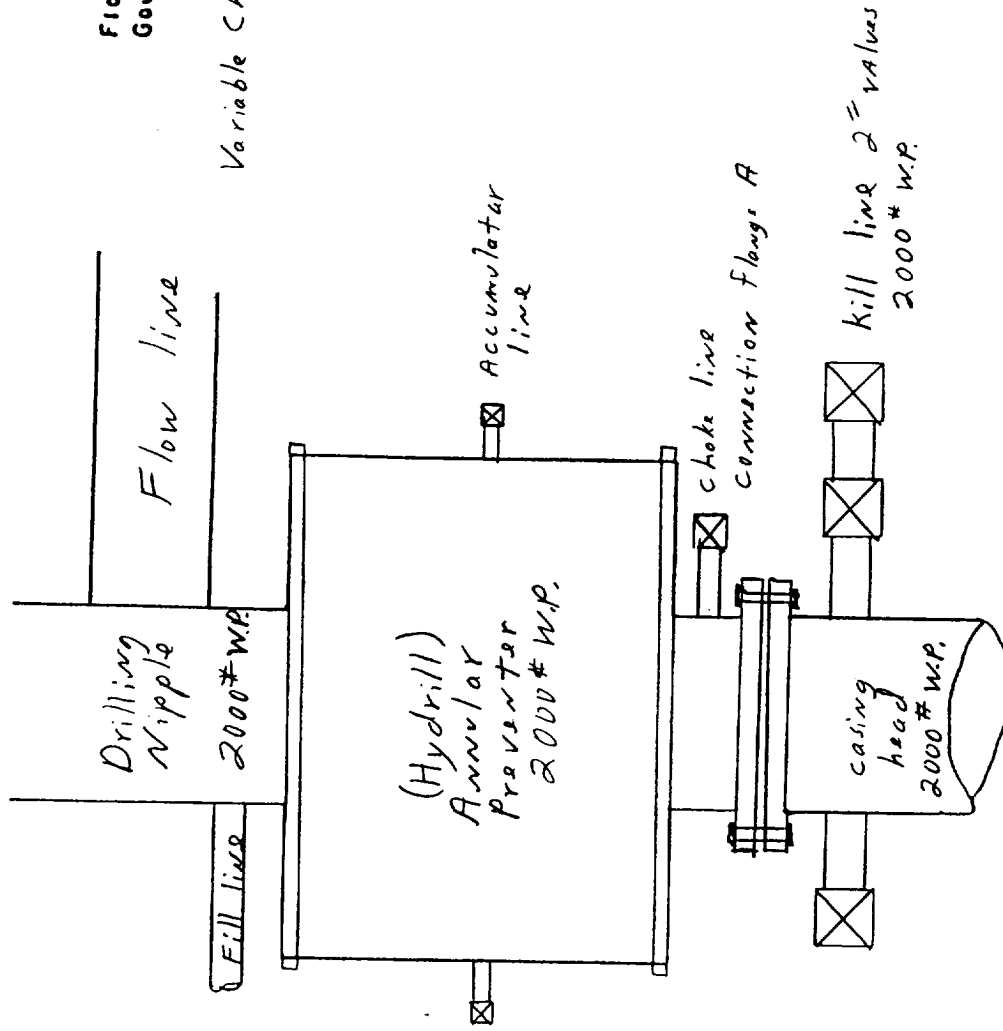
UL or lot No.	Section	Township	Range	Lot Idn	Feet from the	North/South line	Feet from the	East/West line	County
J	34	17 S	28 E		1770	SOUTH	2310	EAST	EDDY

Bottom Hole Location If Different From Surface

UL or lot No.	Section	Township	Range	Lot Idn	Feet from the	North/South line	Feet from the	East/West line	County
Dedicated Acres 40	Joint or Infill	Consolidation Code	Order No.						

NO ALLOWABLE WILL BE ASSIGNED TO THIS COMPLETION UNTIL ALL INTERESTS HAVE BEEN CONSOLIDATED
OR A NON-STANDARD UNIT HAS BEEN APPROVED BY THE DIVISION

		<p align="center">OPERATOR CERTIFICATION</p> <p><i>I hereby certify the the information contained herein is true and complete to the best of my knowledge and belief.</i></p> <p style="text-align: right;"><u>Bonnie Atwater</u> Signature</p> <p style="text-align: right;"><u>Bonnie Atwater</u> Printed Name</p> <p style="text-align: right;"><u>Regulatory Tech.</u> Title</p> <p style="text-align: right;"><u>March 20, 1998</u> Date</p>
		<p align="center">SURVEYOR CERTIFICATION</p> <p><i>I hereby certify that the well location shown on this plat was plotted from field notes of actual surveys made by me or under my supervision, and that the same is true and correct to the best of my belief.</i></p> <p align="right;">MARCH 12, 1998</p> <p>Date Surveyed <u>MARCH 12, 1998</u> CDG</p> <p>Signature & Seal of Professional Surveyor</p> <div style="text-align: center;"> </div> <p align="right">98-11-0421</p> <p>Certificate No. <u>RONALD L. EDSON 3239</u> <u>GARY EDSON 12641</u></p>



PLAN VIEW - CHOKE MANIFOLD