

UNITED STATES
DEPARTMENT OF THE INTERIOR
BUREAU OF LAND MANAGEMENT

OCD - Artesia

C/SF

FORM APPROVED
Budget Bureau No. 1004-0135
Expires March 31, 1993

SUNDRY NOTICES AND REPORTS ON WELLS

Do not use this form for proposals to drill or to deepen or reentry to a different reservoir.
Use "APPLICATION FOR PERMIT—" for such proposals

SUBMIT IN TRIPLICATE

1. Type of Well
☒ Oil Well ☐ Gas Well ☐ Other

2. Name of Operator ☒
DEVON ENERGY CORPORATION (NEVADA)

3. Address and Telephone No.
20 NORTH BROADWAY, SUITE 1500, OKLAHOMA CITY, OKLAHOMA 73102 (405) 235-3611

4. Location of Well (Footage, Sec., T., R., M., or Survey Description)
990' FNL & 330' FEL of Section 6-18S-27E, Unit "A"

5. Lease Designation and Serial No.
LC-026874-F

6. If Indian, Allottee or Tribe Name

7. If Unit or CA, Agreement Designation

8. Well Name and No.
Evarts 6 Federal #3

9. API Well No.
30-015-30345

10. Field and Pool, or Exploratory Area
Red Lake (Q-GB-SA)

11. County or Parish, State
Eddy County, NM

CHECK APPROPRIATE BOX(s) TO INDICATE NATURE OF NOTICE, REPORT, OR OTHER DATA

TYPE OF SUBMISSION

TYPE OF ACTION

☐ Notice of Intent

☒ Subsequent Report

☐ Final Abandonment Notice

☐ Abandonment

☐ Recompletion

☐ Plugging Back

☐ Casing Repair

☐ Altering Casing

☒ Other APD Extension

☐ Change of Plans

☐ New Construction

☐ Non-Routine Fracturing

☐ Water Shut-Off

☐ Conversion to Injection

☐ Dispose Water

(Note: Report results of multiple completion on Well Completion or Recompletion Report and Log form.)

13. Describe Proposed or Completed Operations (Clearly state all pertinent details, and give pertinent dates, including estimated date of starting any proposed work. If well is directionally drilled, give subsurface locations and measured and true vertical depths for all markers and zones pertinent to this work.)*

The Application for Permit to Drill this well was approved July 15, 1998.

At this time, Devon Energy Corporation (Nevada) requests an extension of one year to drill this well.

Approved For 12 Month Period
Ending 7/15/2000



14. I hereby certify that the foregoing is true and correct

Signed Tonja Rutelonis
(This space for Federal or State office use)

Tonja Rutelonis

Title Engineering Technician

Date 6/22/99

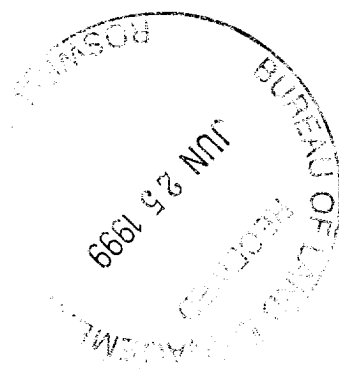
Approved by (ORIG. SCD) JOE G. LARA
Conditions of approval, if any:

Title Petroleum Engineer

Date 6/30/99

Title 18 U.S.C. Section 1001, makes it a crime for any person knowingly and willfully to make to any department or agency of the United States any false, fictitious or fraudulent statements or representations to any matter within its jurisdiction.

*See Instruction on Reverse Side



UNITED STATES
DEPARTMENT OF THE INTERIOR
BUREAU OF LAND MANAGEMENT

SUBMIT IN

(See other instruc
reverse side)

Form approved.

c/4

APPLICATION FOR PERMIT TO DRILL OR DEEPEN

1a. TYPE OF WORK: DRILL ☒ DEEPEN ☐

b. TYPE OF WELL:

OIL WELL ☒ GAS WELL ☐ Other ☐ SINGLE ZONE ☐ MULTIPLE ZONE ☐

2. NAME OF OPERATOR

DEVON ENERGY CORPORATION (NEVADA)

6137

3. ADDRESS AND TELEPHONE NO.

20 N. BROADWAY, SUITE 1500, OKC, OK 73102 (405) 235-3611

4. LOCATION OF WELL (Report location clearly and in accordance with any State requirements)*

At surface 990' FNL & 330' FEL, Unit "A"

At top proposed prod. zone (SAME)

Lot 1

14. DISTANCE IN MILES AND DIRECTION FROM NEAREST TOWN OR POST OFFICE*

Approximately 7 miles southeast of Artesia, NM

15. DISTANCE FROM PROPOSED
LOCATION TO NEAREST

PROPERTY OR LEASE LINE, FT. 330'

(Also to nearest drlg. unit line if any)

18. DISTANCE FROM PROPOSED LOCATION*

TO NEAREST WELL, DRILLING, COMPLETED,
OR APPLIED FOR, ON THIS LEASE, FT. 850'

16. NO. OF ACRES IN LEASE

81

19. PROPOSED DEPTH

2800'

17. NO. OF ACRES ASSIGNED

TO THIS WELL

40

20. ROTARY OR CABLE TOOLS*

Rotary

21. ELEVATIONS (Show whether DF, RT, GR, etc.)

GR 3435'

22. APPROX. DATE WORK WILL START*

February 10, 1998

23.

PROPOSED CASING AND CEMENT

ROSWELL CONTROLLED WATER BASIN

SIZE OF HOLE	GRADE, SIZE OF CASING	WEIGHT PER FOOT	SETTING DEPTH	QUANTITY OF CEMENT
17 1/2"	14"	Conductor	40'	Redimix
12 1/4"	8 5/8", J-55	24 ppf	1150'	150 sx Lite + 350 sx Class C
7 7/8"	5 1/2", J-55	15.5 ppf	2800'	150 sx Lite + 350 sx Class C

* Cement will be circulated to surface on all casing strings.

Devon Energy plans to drill to 2800' +/- to test the San Andres Formation for commercial quantities of oil. If the San Andres is deemed non-commercial, the wellbore will be plugged and abandoned per Federal regulations. Programs to adhere to onshore oil and gas regulations are outlined in the following exhibits and attachments.

Drilling Program

Surface Use and Operating Plan

Exhibit #1 - Blowout Prevention Equipment/

Choke Manifold

Exhibit #2 - Location and Elevation Plat

Exhibit #3 - Planned Access Roads

Exhibit #4 - Wells Within a One Mile Radius

Exhibit #5 - Production Facilities Plan

Exhibit #6 - Rotary Rig Layout

Exhibit #7 - Casing Design Parameters and Factors

Exhibit #8 - H₂S Operating Plan

The undersigned accepts all applicable terms, conditions, stipulation, and restrictions concerning operations conducted on the leased land or portion thereof, as described above.

Bond Coverage: Nationwide

BLM Bond File No.: CO-1104

APPROVAL SUBJECT TO
GENERAL REQUIREMENTS AND
SPECIAL STIPULATIONS

ATTACHED

Post ID-1
7-24-98
API & LCC

IN ABOVE SPACE DESCRIBE PROPOSED PROGRAM: If proposal is to deepen, give data on present productive zone and proposed new productive zone. If proposal is to drill or deepen directionally, give pertinent data on subsurface locations and measured and true vertical depths. Give blowout preventer program, if any.

24.

SIGNED

E. L. Buttross, Jr.

TITLE

E. L. BUTTROSS, JR.
DISTRICT ENGINEER

DATE

12/31/97

*(This space for Federal or State office use)

PERMIT NO.

APPROVAL DATE

Application approval does not warrant or certify that the applicant holds legal or equitable title to those rights in the subject lease which would entitle the applicant to conduct operations thereon.

CONDITIONS OF APPROVAL, IF ANY:

Acting

Assistant Field Office Manager,
Lands and Minerals

APPROVED BY

(ORIG. SGD.) JAMES G. PETTENGILL

TITLE

DATE

JUL 15 1998

See Instructions On Reverse Side

DISTRICT I
P.O. Box 1980, Hobbs, NM 88240

DISTRICT II
P.O. Drawer DD, Artesia, NM 88210

DISTRICT III
1000 Rio Brazos Rd., Aztec, NM 87410

State of New Mexico
Energy, Minerals and Natural Resources Department

Form C-102
Revised February 10, 1994
Instruction on back
Submit to Appropriate District Office
State Lease - 4 Copies
Fee Lease - 3 Copies

OIL CONSERVATION DIVISION

P.O. Box 2088
Santa Fe, New Mexico 87504-2088

☐ AMENDED REPORT

WELL LOCATION AND ACREAGE DEDICATION PLAT

API Number		Pool Code		Pool Name Red Lake (Q-GB-SA)	
Property Code	Property Name EVARTS "6" FEDERAL				Well Number 3
OGRID No.	Operator Name DEVON ENERGY CORPORATION				Elevation 3435'

Surface Location

UL or lot No.	Section	Township	Range	Lot Idn	Feet from the	North/South line	Feet from the	East/West line	County
A	6	18 S	27 E		990	NORTH	330	EAST	EDDY

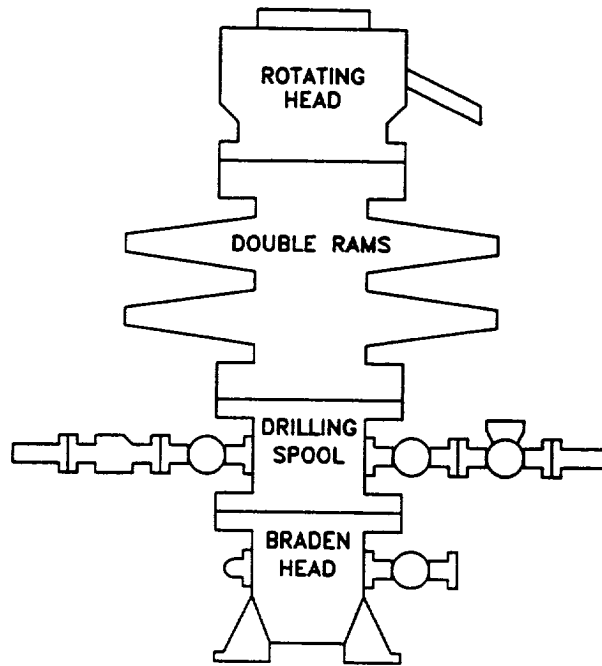
Bottom Hole Location If Different From Surface

UL or lot No.	Section	Township	Range	Lot Idn	Feet from the	North/South line	Feet from the	East/West line	County
Dedicated Acres		Joint or Infill		Consolidation Code		Order No.			

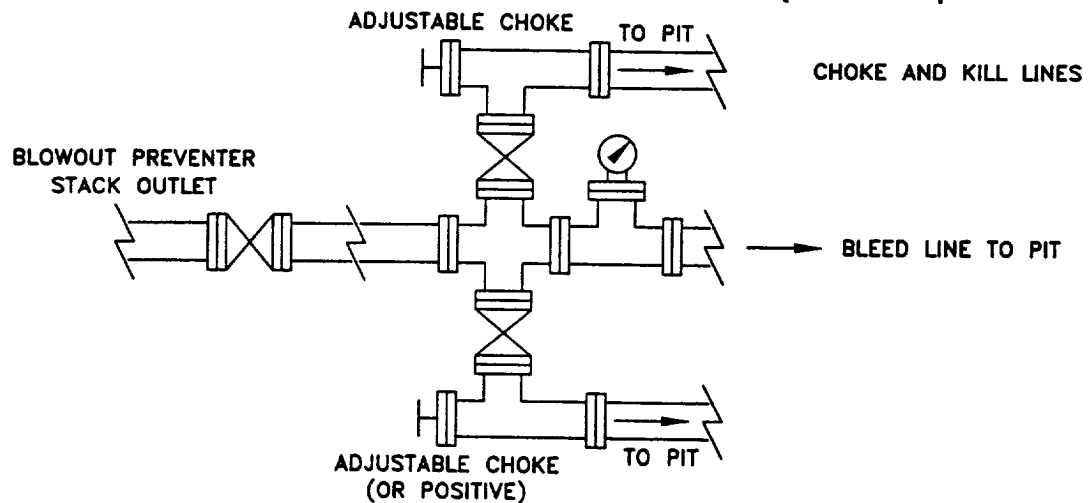
NO ALLOWABLE WILL BE ASSIGNED TO THIS COMPLETION UNTIL ALL INTERESTS HAVE BEEN CONSOLIDATED
OR A NON-STANDARD UNIT HAS BEEN APPROVED BY THE DIVISION

	OPERATOR CERTIFICATION I hereby certify the the information contained herein is true and complete to the best of my knowledge and belief. <u>E. L. Buttross, Jr.</u> Signature E. L. Buttross, Jr. Printed Name District Engineer Title December 31, 1997 Date	
	SURVEYOR CERTIFICATION I hereby certify that the well location shown on this plat was plotted from field notes of actual surveys made by me or under my supervision, and that the same is true and correct to the best of my belief. November 05, 1997 Date Surveyed Signature & Seal Professional Surveyor No. 7576PP Certificate No. 7977	
	BASIN SURVEYS	

EXHIBIT # 1



CHOKE MANIFOLD REQUIREMENT (2000 psi WP)



devon

WEST RED LAKE

EDDY COUNTY, NEW MEXICO

SCHEMATIC

BLOWOUT PREVENTOR

(2000 PSI MINIMUM WP)

WRL BOP	

20

11/97

Attachment to Exhibit #1
NOTES REGARDING BLOWOUT PREVENTORS
Evarts 6 Federal #3
Eddy County, New Mexico

1. Drilling nipple will be constructed so it can be removed mechanically without the aid of a welder. The minimum internal diameter will equal BOP bore.
2. Wear ring will be properly installed in head.
3. Blowout preventor and all associated fittings will be in operable condition and tested to 1000 psi with the rig pump.
4. All fittings will be flanged.
5. A full bore safety valve with proper thread connections will be available on the rotary rig floor at all times.
6. All choke lines will be anchored to prevent movement.
7. All BOP equipment will be equal to or larger in bore than the internal diameter of the last casing string.
8. Will maintain a Kelly cock attached to the Kelly.
9. Hand wheels and wrenches will be properly installed and tested for safe operation.
10. All BOP equipment will meet API standards and include a minimum 40 gallon accumulator having two independent means of power to initiate closing operation.