

District I
PO Box 1980, Hobbs, NM 88241-1980
District II
PO Drawer DD, Artesa, NM 88211-0719
District III
1000 Rio Brazos Rd., Aztec, NM 87410
District IV
PO Box 2088, Santa Fe, NM 87504-2088

State of New Mexico
Energy, Minerals & Natural Resources Department

OIL CONSERVATION DIVISION
PO Box 2088
Santa Fe, NM 87504-2088

Form C-101
Revised February 10, 1994
Instructions on back
Submit to Appropriate District Office
State Lease - 6 Copies
Fee Lease - 5 Copies

☐ AMENDED REPORT

APPLICATION FOR PERMIT TO DRILL, RE-ENTER, DEEPEN, PLUGBACK, OR ADD A ZONE

Operator Name and Address: OXY USA Inc. P.O. Box 50250 Midland, TX 79710-0250		OGRID Number 16696
		API Number 30-0 15-30362
Property Code 23548	Property Name OXY Junction State	Well No. 1

7 Surface Location

UL or lot no.	Section	Township	Range	Lot Ida	Feet from the	North/South line	Feet from the	East/West line	County
G	2	24S	26E		1980	North	1980	East	Eddy

8 Proposed Bottom Hole Location If Different From Surface

UL or lot no.	Section	Township	Range	Lot Ida	Feet from the	North/South line	Feet from the	East/West line	County
Proposed Pool 1 Carlsbad Morrow, South					73960	Proposed Pool 2			

Work Type Code N	Well Type Code G	Cable/Rotary R	Lease Type Code S	Ground Level Elevation 3301'
Multiple No	Proposed Depth 12000'	Formation Morrow	Contractor McVay	Spud Date 8/10/98

21 Proposed Casing and Cement Program

Hole Size	Casing Size	Casing weight/foot	Setting Depth	Sacks of Cement	Estimated TOC
17-1/2"	13-3/8"	48#	400'	445	Surface
11"	8-5/8"	32#	3000'	980	Surface
7-7/8"	5-1/2"	17#	12000'	755	6700'

Describe the proposed program. If this application is to DEEPEN or PLUG BACK give the data on the present productive zone and proposed new productive zone. Describe the blowout prevention program, if any. Use additional sheets if necessary.

Post ID-1
7-31-98
API & Loc

SEE OTHER SIDE

I hereby certify that the information given above is true and complete to the best of my knowledge and belief. Signature: <i>David Stewart</i>		OIL CONSERVATION DIVISION	
Printed name: David Stewart		Approved by: ORIGINAL SIGNED BY TIM W. GUM DISTRICT II SUPERVISOR	
Title: Regulatory Analyst		Title:	
Date: 7/27/98		Approval Date: 7-29-98	Expiration Date: 7-29-99
Phone: 915-685-5717		Conditions of Approval: Attached <input checked="" type="checkbox"/>	

ATTACHMENT C-101
OXY USA Inc.
OXY JUNCTION STATE #1
SEC 2 T24S R26E
Eddy County, NM

PROPOSED TD: 12000' TVD

BOP PROGRAM: 0' - 400' None
400'-3000' 13-3/8" 5M blind and pipe rams with 5M annular preventer.
3000'-12000' 13-3/8" 5M blind and pipe rams with 5M annular preventer and rotating head below 8500'.

CASING: 13-3/8" 48# H40 ST&C casing @ 400'. 17-1/2" hole.
8-5/8" 32# K55 ST&C casing @ 3000', 11" hole
5-1/2" 17# N80 LT&C casing @ 12000', 7-7/8" hole.

CEMENT: Surface - Circulate cement with 245sx 35/65 POZ/C w/ 2% CaCl_2 + 6% Bentonite + .25#/sx Cello Flake followed by 200sx Cl C w/ 2% CaCl_2 .
Intermediate - Circulate cement with 780sx 35/65 POZ/C w/ 6% gel + 5#/sx salt + .25#/sx Cello Flake + 5#/sx Gilsonite + 6% Bentonite followed by 200sx Cl C w/ 2% CaCl_2 . Cement volumes may be adjusted to fluid caliper.
Production - Cement with 680sx 15/61/11 POZ/C/Silica Fume w/ .5% FL-25 + .5% FL-52 + 8#/sx Gilsonite followed by 75sx Cl C w/ .1% FL-25. Estimated top of cement is 6700'. Cement volumes may be adjusted to hole caliper.

MUD: 0' - 400' FW/Native Mud. Lime for pH control (9-10).
Paper for seepage.
Wt. 8.6-9.2ppg, vis 32-34sec.
400' - 3000' Brine water. Caustic for pH control (10-10.5).
Paper for seepage.
Wt. 9.6-10ppg, vis 28-29sec.
3000' - 8400' Fresh water. Caustic for pH control (9-9.5).
Paper for seepage.
Wt. 8.3-9.2ppg, vis 28-29sec
8400' - 10200' Cut brine. Caustic for pH control (10-10.5).
Wt. 9.2-9.8ppg, vis 28-34sec
10200' - 12000' Mud up with a XCD Polymer system
Wt. 9.5-10.5ppg, vis 44-48sec WL 8cc.

DISTRICT I
P.O. Box 1980, Hobbs, NM 88240

DISTRICT II
P.O. Drawer DD, Artesia, NM 88210

DISTRICT III
1000 Rio Brazos Rd., Aztec, NM 87410

State of New Mexico
Energy, Minerals and Natural Resources Department

Form C-102
Revised February 10, 1994
Instruction on back
Submit to Appropriate District Office
State Lease - 4 Copies
Fee Lease - 3 Copies

OIL CONSERVATION DIVISION

P.O. Box 2088
Santa Fe, New Mexico 87504-2088

☐ AMENDED REPORT

WELL LOCATION AND ACREAGE DEDICATION PLAT

API Number 30-015-	Pool Code 73960	Pool Name Carlsbad Morrow, South
Property Code	Property Name OXY JUNCTION STATE	Well Number 1
OGRID No. 16696	Operator Name OXY USA INC.	Elevation 3276'

Surface Location

UL or lot No. G	Section 2	Township 24 S	Range 26 E	Lot Idn	Feet from the 1980	North/South line NORTH	Feet from the 1980	East/West line EAST	County EDDY
--------------------	--------------	------------------	---------------	---------	-----------------------	---------------------------	-----------------------	------------------------	----------------

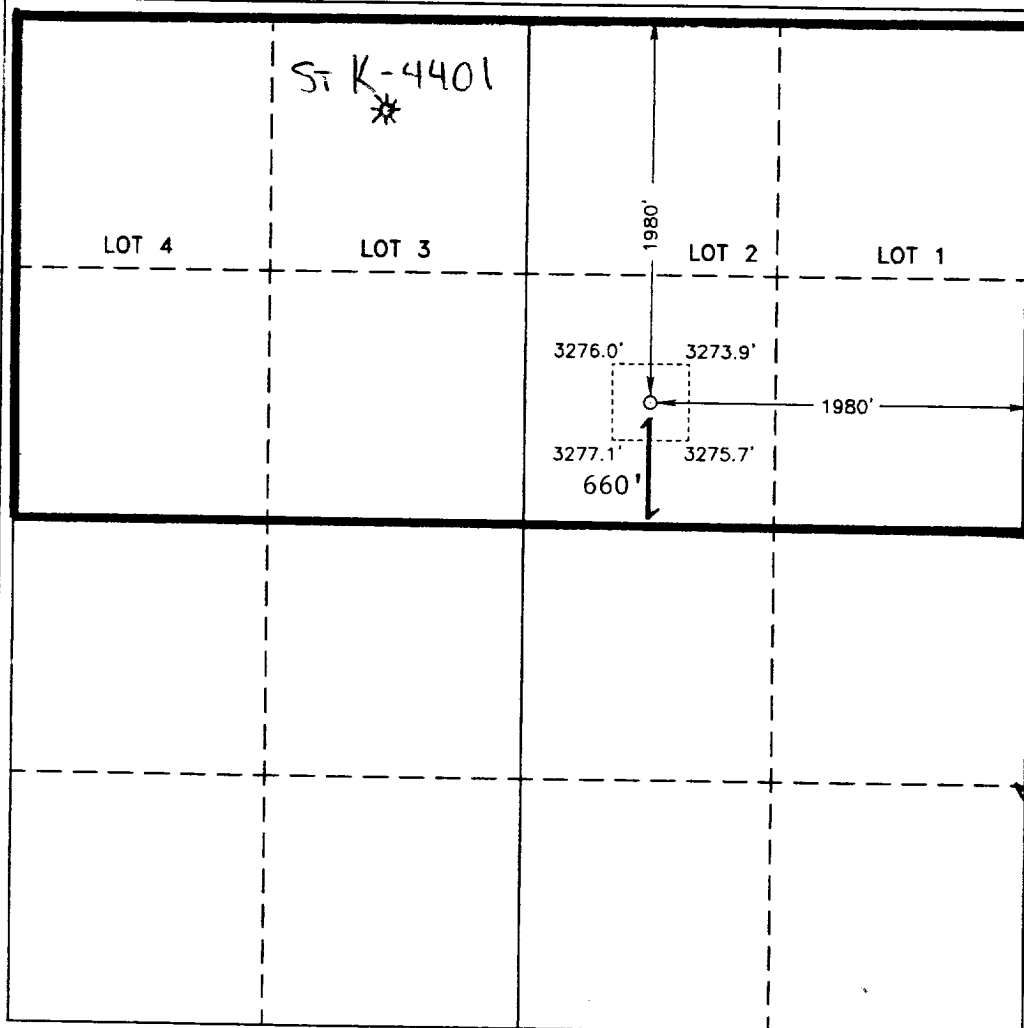
Bottom Hole Location If Different From Surface

UL or lot No.	Section	Township	Range	Lot Idn	Feet from the	North/South line	Feet from the	East/West line	County
---------------	---------	----------	-------	---------	---------------	------------------	---------------	----------------	--------

Dedicated Acres 320	Joint or Infill * N	Consolidation Code	Order No.
------------------------	------------------------	--------------------	-----------

NO ALLOWABLE WILL BE ASSIGNED TO THIS COMPLETION UNTIL ALL INTERESTS HAVE BEEN CONSOLIDATED
OR A NON-STANDARD UNIT HAS BEEN APPROVED BY THE DIVISION

*SEE ATTACHED



OPERATOR CERTIFICATION

I hereby certify the the information
contained herein is true and complete to the
best of my knowledge and belief.

Signature
David Stewart
Printed Name
Regulatory Analyst
Title
Date
7/27/98

SURVEYOR CERTIFICATION

I hereby certify that the well location shown
on this plat was plotted from field notes of
actual surveys made by me or under my
supervision, and that the same is true and
correct to the best of my belief.

July 7, 1998

Date Surveyed
Signature & Seal of
Professional Surveyor
Certificate No. Gary L. Jones 7977
BASIN SURVEYS

Rhombus Operating Co., Ltd.

200 N. Loraine, Suite 1270

Midland, TX 79701

(915)683-8873

Fax (915)683-8876

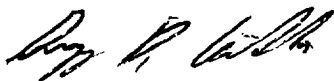
July 24, 1998

Pat Sparks
Oxy USA, Inc.RE: N/2 of Section 2, T-24S, R-26-E
Eddy County, NM

Dear Mr. Sparks:

Upon completion of a Morrow well in the subject acreage by Oxy, Rhombus Operating Co., Ltd. will cease production from the Morrow formation in our State K #1 well, subject to the terms of the Joint Operating Agreement for this well.

Sincerely,

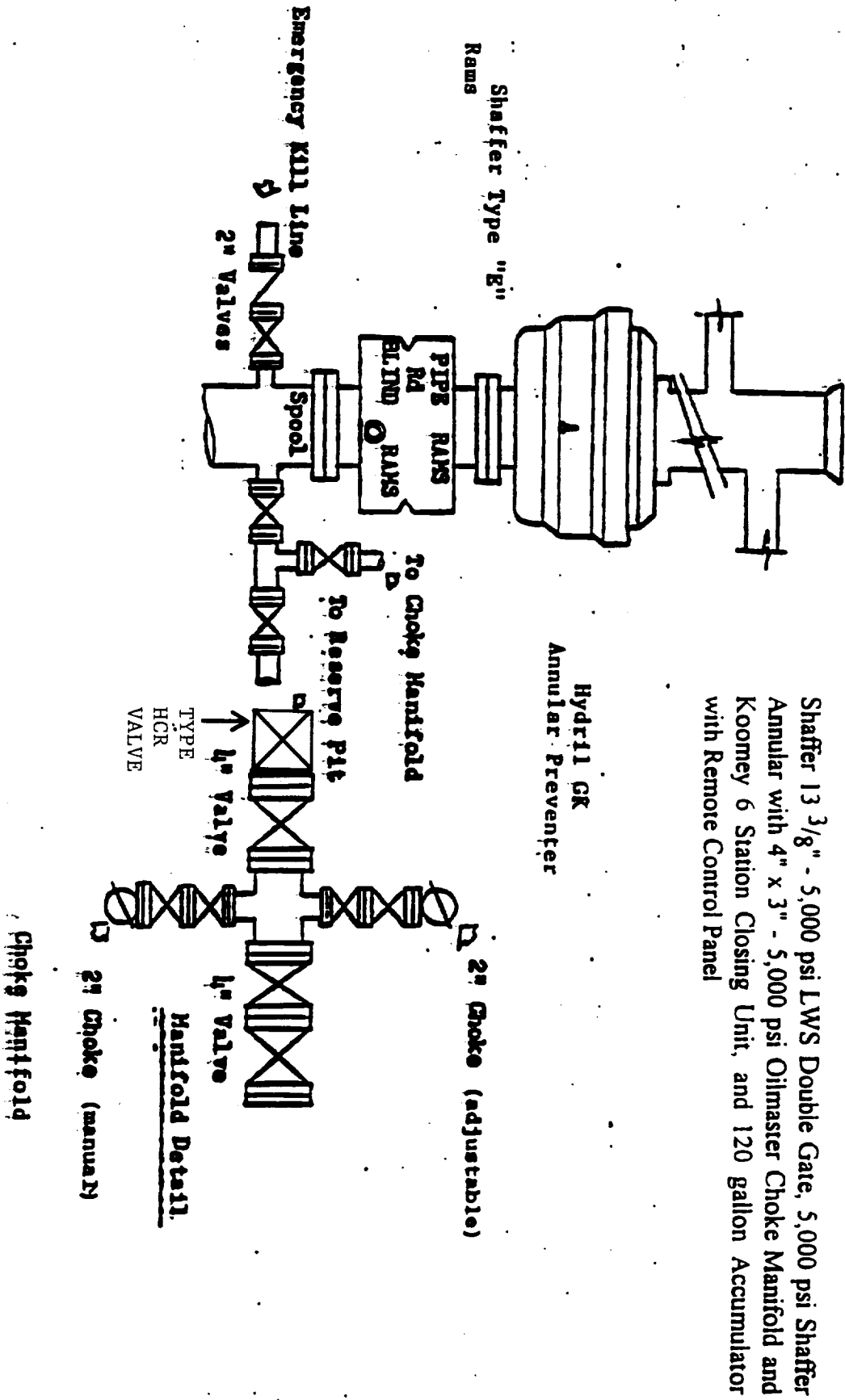
Gregory D. Cielinski
President of the General Partner

Post-it® Fax Note 7671		Date 7.24.98	# of pages 1
To Pat	From Wes		
Co./Dept. Does this look OK	To you?		
Phone #	Phone #		
Fax # 683.5742	Fax #		

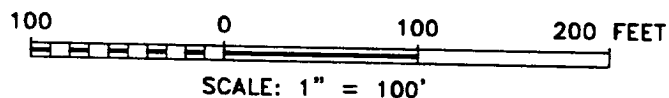
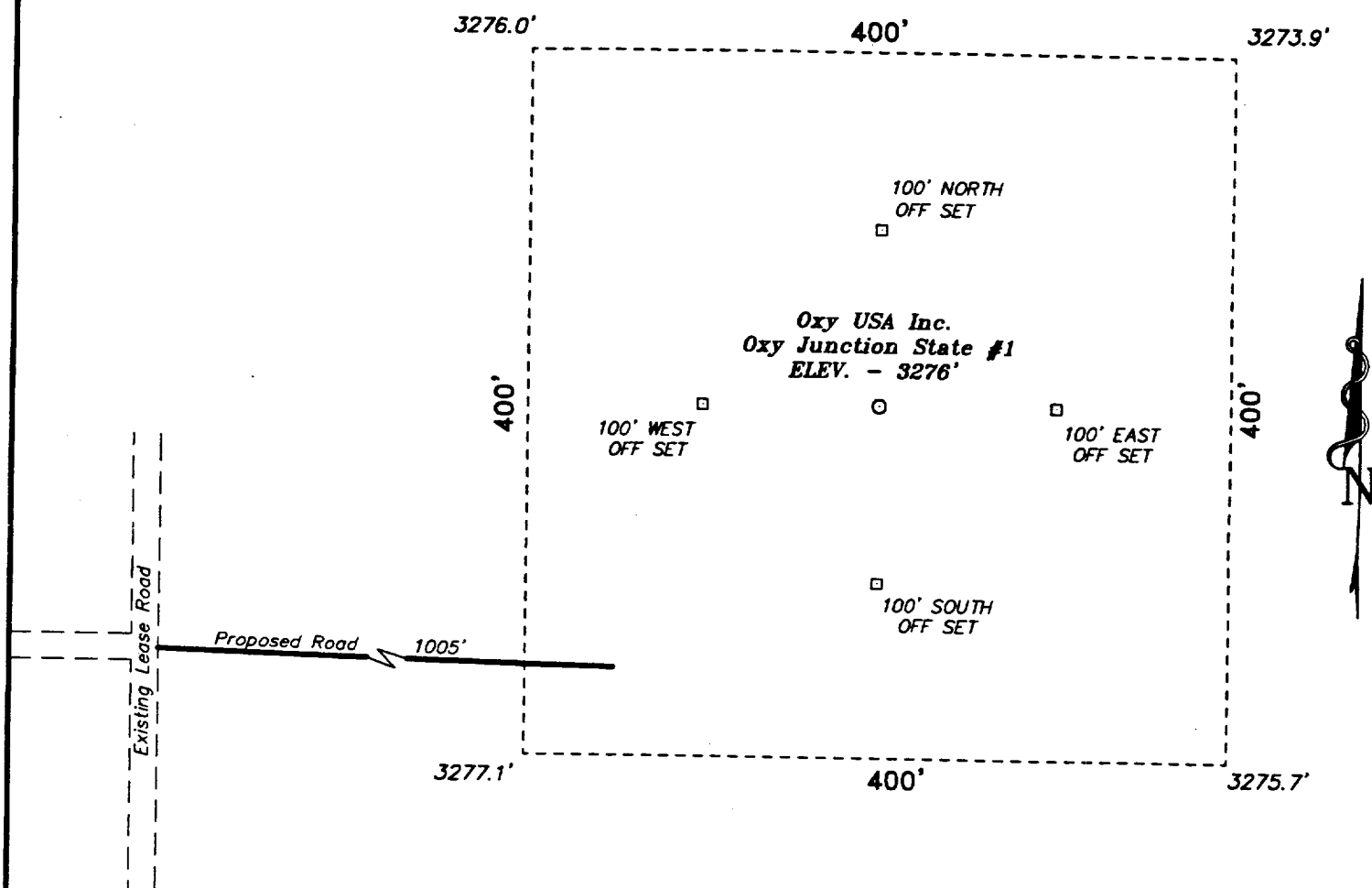


BLOWOUT PREVENTOR SCHEME

EXHIBIT A



SECTION 2, TOWNSHIP 24 SOUTH, RANGE 26 EAST, N.M.P.M.,
EDDY COUNTY, NEW MEXICO.



Oxy USA Inc.

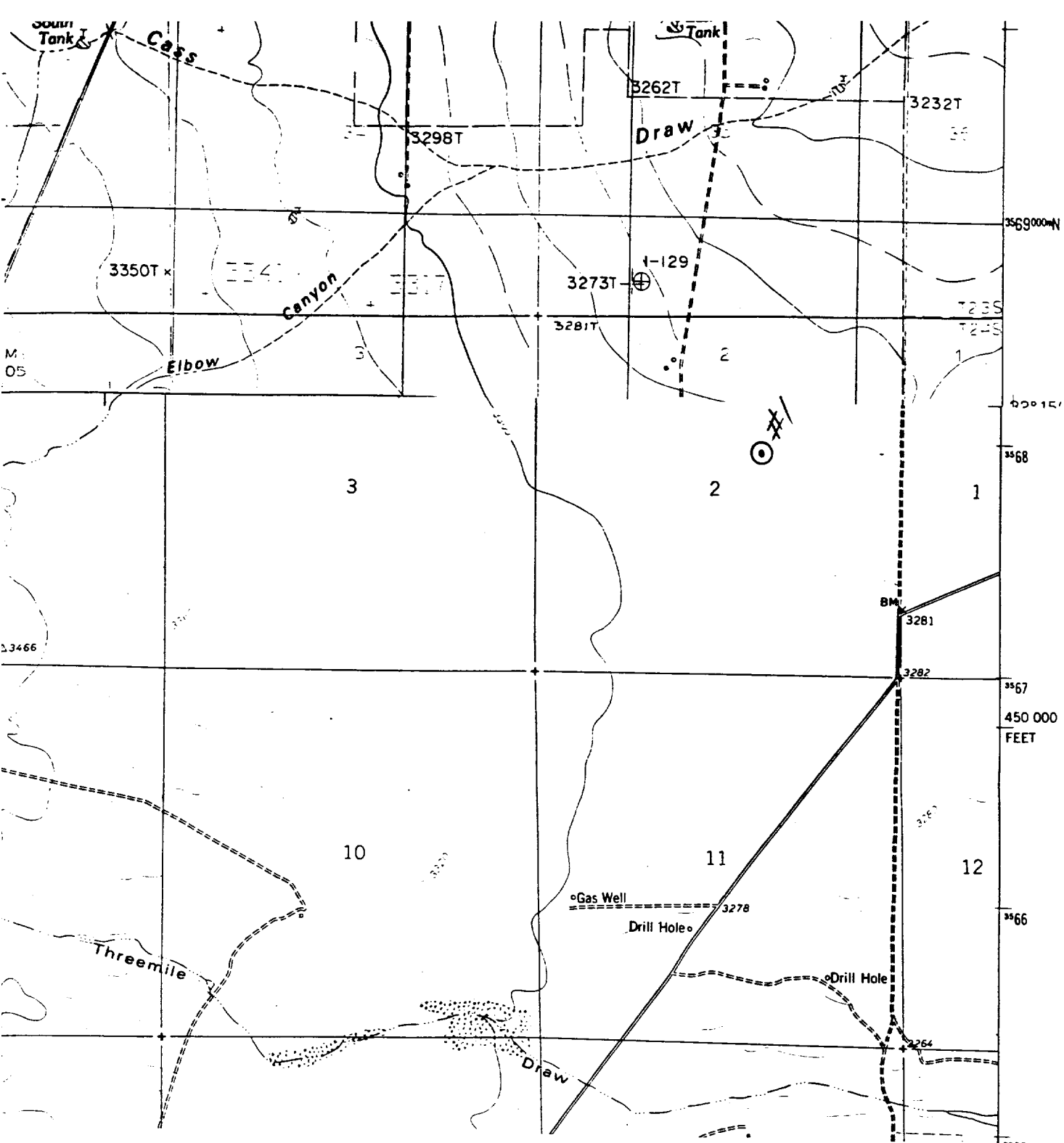
REF: Oxy Junction State #1 / Well Pad Topo

THE OXY JUNCTION STATE No. 1 LOCATED 1980' FROM THE
NORTH LINE AND 1980' FROM THE EAST LINE OF
SECTION 2, TOWNSHIP 24 SOUTH, RANGE 26 EAST,
N.M.P.M., EDDY COUNTY, NEW MEXICO.

BASIN SURVEYS P.O. BOX 1786-HOBBS, NEW MEXICO

W.O. Number: 8306

Drawn By: K. GOAD



OXY USA INC.
 OXY JUNCTION STATE #1
 1980' FNL & 1980' FEL
 Sec. 2, T-24-S, R-26-E,
 Eddy County, New Mexico.

SCALE: 1"=2000'



BASIN SURVEYS

P.O. BOX 1786-HOBBS, NEW MEXICO

W.O. Number: 8306 Drawn By: K. GOAD Survey Date: 07-07-00