

DISTRICT I  
P. O. Box 1980  
Hobbs, NM 88241-1980

State of New Mexico  
Energy, Minerals, and Natural Resources Department

Form C-102  
Revised 02-10-94  
Instructions on back

DISTRICT II  
P. O. Drower DD  
Artesia, NM 88211-0719

**OIL CONSERVATION DIVISION**  
P. O. Box 2088  
Santa Fe, New Mexico 87504-2088

Submit to the Appropriate  
District Office  
State Lease - 4 copies  
Fee Lease - 3 copies

DISTRICT III  
1000 Rio Brazos Rd.  
Aztec, NM 87410

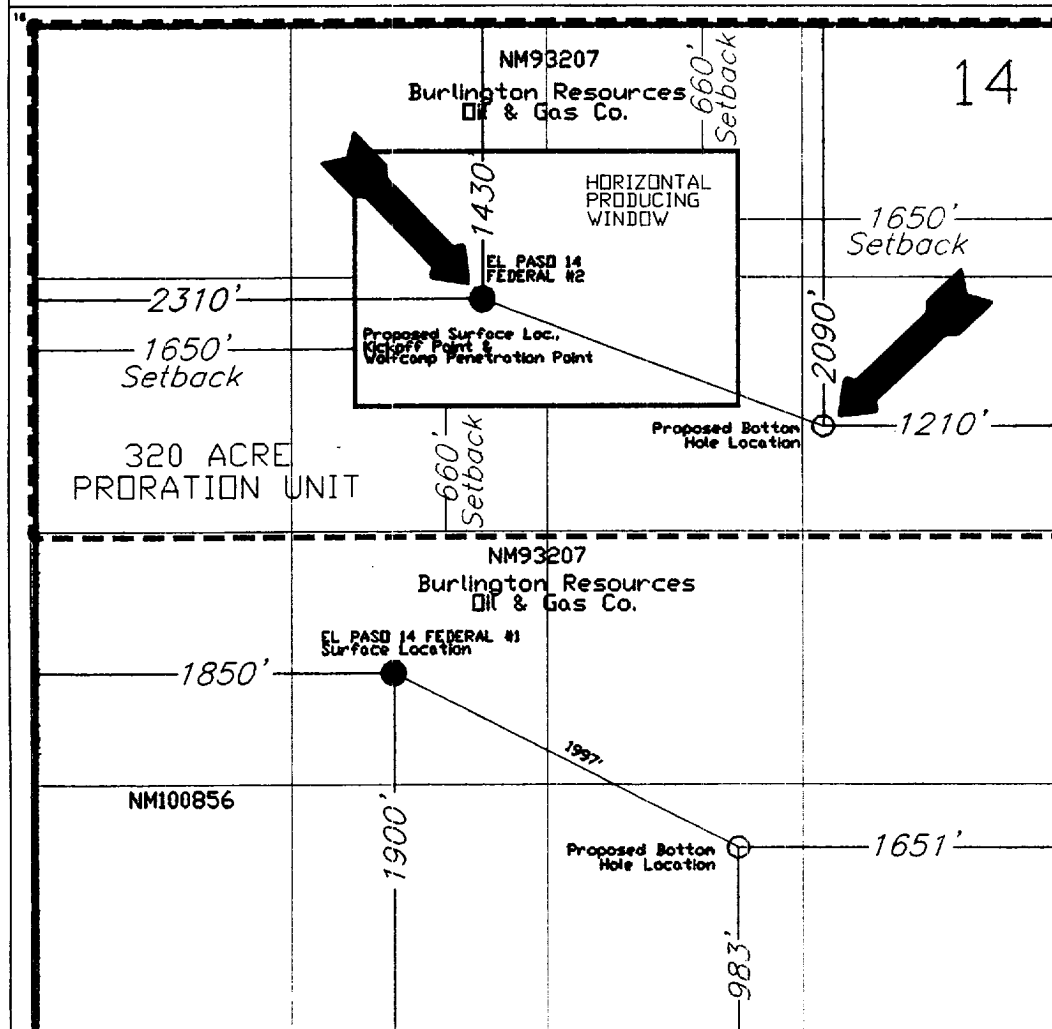
☐ AMENDED REPORT

DISTRICT IV  
P. O. Box 2088  
Santa Fe, NM 87507-2088

**WELL LOCATION AND ACREAGE DEDICATION PLAT**

1 API Number		2 Pool Code 84330		3 Pool Name ROSS DRAW WOLFCAMP GAS					
4 Property Code		5 Property Name EL PASO '14' FEDERAL						6 Well Number 2	
7 OGRID No. 26485		8 Operator Name BURLINGTON RESOURCES OIL & GAS COMPANY						9 Elevation 3198'	
10 SURFACE LOCATION									
UL or lot no. F	Section 14	Township 26 SOUTH	Range 30 EAST, N.M.P.M.	Lot Ida	Feet from the 1430'	North/South line NORTH	Feet from the 2310'	East/West line WEST	County EDDY
"BOTTOM HOLE LOCATION IF DIFFERENT FROM SURFACE									
UL or lot no. H	Section 14	Township 26 SOUTH	Range 30 EAST, N.M.P.M.	Lot Ida	Feet from the 2090'	North/South line NORTH	Feet from the 1210'	East/West line EAST	County EDDY
12 Dedicated Acres 320		13 Joint or Infill		14 Consolidation Code		15 Order No.			

NO ALLOWABLE WELL BE ASSIGNED TO THIS COMPLETION UNTIL ALL INTERESTS HAVE BEEN  
CONSOLIDATED OR A NON-STANDARD UNIT HAS BEEN APPROVED BY THE DIVISION



**OPERATOR CERTIFICATION**

I hereby certify that the information  
contained herein is true and complete  
to the best of my knowledge and belief.

Signature  
*Maria L. Perez*  
Printed Name  
**MARIA L. PEREZ**  
Title  
**REGULATORY REP.**  
Date  
**9-15-98**

**SURVEYOR CERTIFICATION**

I hereby certify that the well  
location shown on this plat was  
plotted from field notes of actual  
surveys made by me or under  
my supervision, and that the  
same is true and correct to the  
best of my belief.

Date of Survey  
**SEP 15 1998**  
Signature  
*Roger M. Robbins*  
Professional Surveyor  
**12128**  
Certificate No.  
**ROGER M. ROBBINS P.S. #12128**  
JOB #60343 / 23 SF / VHR