

59  
UNITED STATES  
DEPARTMENT OF THE INTERIOR  
BUREAU OF LAND MANAGEMENT

SUBMIT ☒ REPLICATE ☐  
N. M. Oil & Gas Division  
811 S. 1ST ST.  
ARTESIA, NM 86210-2834

FORM APPROVED  
OMB NO. 1004-0136  
Expires: February 28, 1995

APPLICATION FOR PERMIT TO DRILL OR DEEPEN

1a. TYPE OF WORK

DRILL ☒

DEEPEN ☐

b. TYPE OF WELL

OIL  
WELL ☒

GAS  
WELL ☐

OTHER ☐

SINGLE  
ZONE ☐

MULTIPLE  
ZONE ☐

2. NAME OF OPERATOR

PENWELL ENERGY, INC.

(BILL PIERCE) 913-683-2534

3. ADDRESS AND TELEPHONE NO.

600 NORTH MARIENFELD SUITE 1100 MIDLAND, TEXAS 79701

4. LOCATION OF WELL (Report location clearly and in accordance with any State requirements.)

At surface

1880' FSL & 660' FWL SEC. 28 UNIT "L" T23S-R29E EDDY CO. NM

At proposed prod. zone

SAME

14. DISTANCE IN MILES AND DIRECTION FROM NEAREST TOWN OR POST OFFICE\*

Approximately 10 miles East of Loving New Mexico.

15. DISTANCE FROM PROPOSED\*

LOCATION TO NEAREST  
PROPERTY OR LEASE LINE, FT.  
(Also to nearest drlg. unit line, if any)

660'

16. NO. OF ACRES IN LEASE

640

17. NO. OF ACRES ASSIGNED  
TO THIS WELL

40

18. DISTANCE FROM PROPOSED LOCATION\*  
TO NEAREST WELL, DRILLING, COMPLETED,  
OR APPLIED FOR, ON THIS LEASE, FT.

1420'

19. PROPOSED DEPTH

8000'

20. ROTARY OR CABLE TOOLS

ROTARY

21. ELEVATIONS (Show whether DF, RT, GR, etc.)

3026' GR.

22. APPROX. DATE WORK WILL START\*

WHEN APPROVED

23. PROPOSED CASING AND CEMENTING PROGRAM

SIZE OF HOLE	GRADE SIZE OF CASING	WEIGHT PER FOOT	SETTING DEPTH	QUANTITY OF CEMENT
25"	Conductor 20"	NA	40'	Cement to surface with Redi-mix
12 1/4"	J-55 9 5/8"	36	1600'	550 Sx. circulate to surface.
8 3/4"	J-55 5 1/2"	17 & 15.5	8000'	1200 Sx. top of cement 1400'

1. Drill 25" hole to 40'. Set 40' of 20" conductor and cement to surface with Redi-mix.

2. Drill 12 1/4" hole to 1600'. Run and set 1600' of 9 5/8" 36# J-55 ST&C casing. Cement with 550 Sx. of Class "C" cement + additives, circulate cement to surface.

3. Drill 8 3/4" hole to 8000'. Run and set 8000' of 5 1/2" casing as follows: 3400' of 5 1/2" J-55 17# ST&C, 2800' of 5 1/2" J-55 15.5# ST&C, 1800' of 5 1/2" J-55 17# LT&C. Cement with 900 Sx. of Halco Light, tail in with 300 Sx. of 50/50 POZ, estimate top of cement 1400'.

Post ID-1  
11-20-98  
API & Loc

IN ABOVE SPACE DESCRIBE PROPOSED PROGRAM: If proposal is to deepen, give data on present productive zone and proposed new productive zone. If proposal is to drill or deepen directionally, give pertinent data on subsurface locations and measured and true vertical depths. Give blowout preventer program, if any.

24.

SIGNED

Joe T Garcia

TITLE Agent

DATE 10/08/98

(This space for Federal or State office use)

PERMIT NO.

APPROVAL DATE

Application approval does not warrant or certify that the applicant holds legal or equitable title to those rights in the subject lease which would entitle the applicant to conduct operations thereon.  
CONDITIONS OF APPROVAL, IF ANY:

APPROVED BY

Richard A. Whaley

TITLE

Federal State Director

DATE

11-9-98

\*See Instructions On Reverse Side

Title 18 U.S.C. Section 1001, makes it a crime for any person knowingly and willfully to make to any department or agency of the United States any false, fictitious or fraudulent statements or representations as to any matter within its jurisdiction.



100-100000  
100-100000  
100-100000

DISTRICT II  
P.O. Drawer DD, Artesia, NM 88210

DISTRICT III  
1000 Rio Brazos Rd., Aztec, NM 87410

## OIL CONSERVATION DIVISION

CONSERVATION DIVISION  
P.O. Box 2088  
Santa Fe, New Mexico 87504-2088

☐ AMENDED REPORT

## WELL LOCATION AND ACREAGE DEDICATION PLAT

API Number		Pool Code	Pool Name
			WILDCST
Property Code	Property Name		Well Number
	COCHITI "28" FEDERAL		2
OGRID No.	Operator Name		Elevation
147380	PENWELL ENERGY INC.		3026'

### Surface Location

UL or lot No.	Section	Township	Range	Lot Idn	Feet from the	North/South line	Feet from the	East/West line	County
L	28	23 S	29 E		1880	SOUTH	660	WEST	EDDY

## Bottom Hole Location If Different From Surface

UL or lot No.	Section	Township	Range	Lot Idn	Feet from the	North/South line	Feet from the	East/West line	County
---------------	---------	----------	-------	---------	---------------	------------------	---------------	----------------	--------

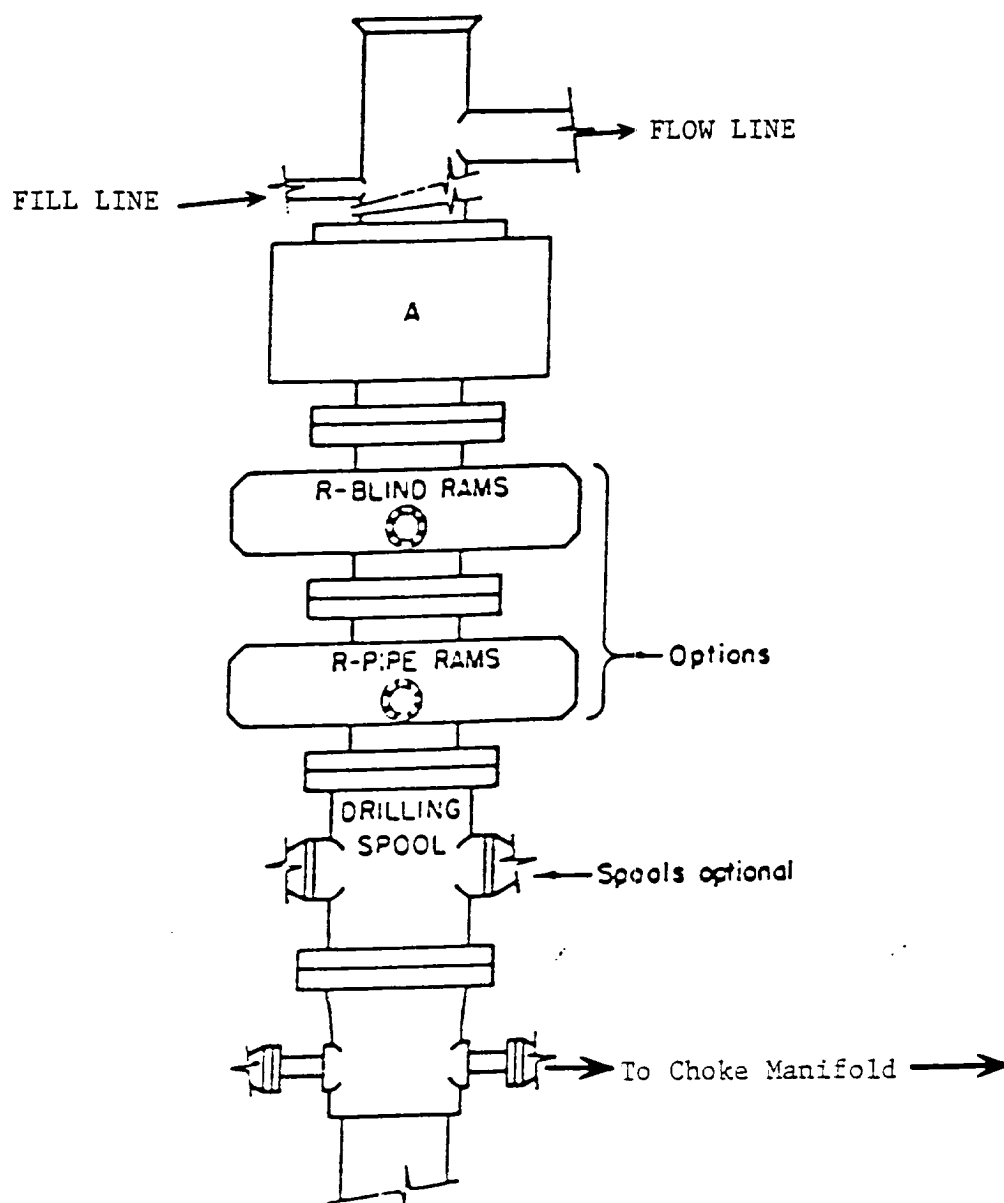
Dedicated Acres	Joint or Infill	Consolidation Code	Order No.
40			

NO ALLOWABLE WILL BE ASSIGNED TO THIS COMPLETION UNTIL ALL INTERESTS HAVE BEEN CONSOLIDATED  
OR A NON-STANDARD UNIT HAS BEEN APPROVED BY THE DIVISION

	<div style="border: 1px solid black; padding: 5px; margin-bottom: 10px;"> <p align="center"><b>OPERATOR CERTIFICATION</b></p> <p><i>I hereby certify the the information contained herein is true and complete to the best of my knowledge and belief.</i></p> <p align="center"><i>Joe T Jones</i></p> <hr/> <p align="center">Signature</p> <hr/> <p align="center">Joe T. Janica</p> <hr/> <p align="center">Printed Name</p> <hr/> <p align="center">Agent</p> <hr/> <p align="center">Title</p> <hr/> <p align="center">10/08/98</p> <hr/> <p align="center">Date</p> </div> <div style="border: 1px solid black; padding: 5px;"> <p align="center"><b>SURVEYOR CERTIFICATION</b></p> <p><i>I hereby certify that the well location shown on this plat was plotted from field notes of actual surveys made by me or under my supervision, and that the same is true and correct to the best of my belief.</i></p> <p align="center">October 1, 1998</p> <hr/> <p align="center">Date Surveyed</p> <hr/> <p align="center">Signature of GARY L. JONES</p> <hr/> <p align="center">Professional Surveyor</p> <hr/> <p align="center"> </p> <hr/> <p align="center">Certificate No. Gary L. Jones 7977</p> <hr/> <p align="center"><b>BASIN SURVEYS</b></p> </div>
--	--

EXHIBIT "A"

RECEIVED  
17-6-11  
10/11/11



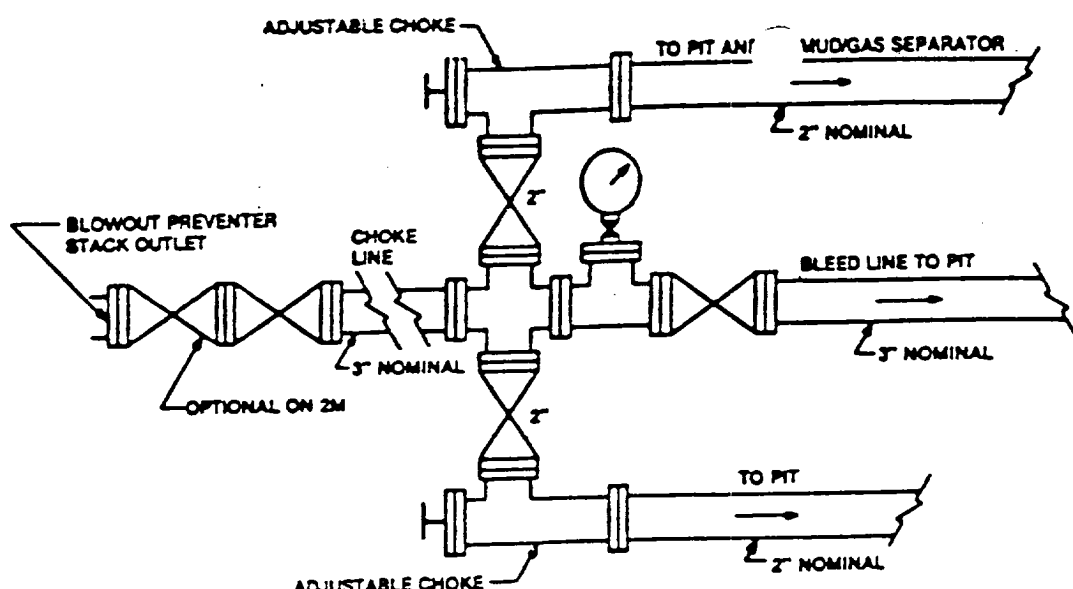
# **ARRANGEMENT SRRA**

900 Series  
3000 PSI WP

EXHIBIT "E"  
B.O.P. SKETCH TO BE USED ON

PENWELL ENERGY, INC.  
COCHITI "28" FEDERAL # 2  
UNIT "L" SECTION 28  
T23S-R29E EDDY CO. NM

RECEIVED  
OCT 9 1998  
BLM  
ROSWELL, NM



Typical choke manifold assembly for 3M WP system

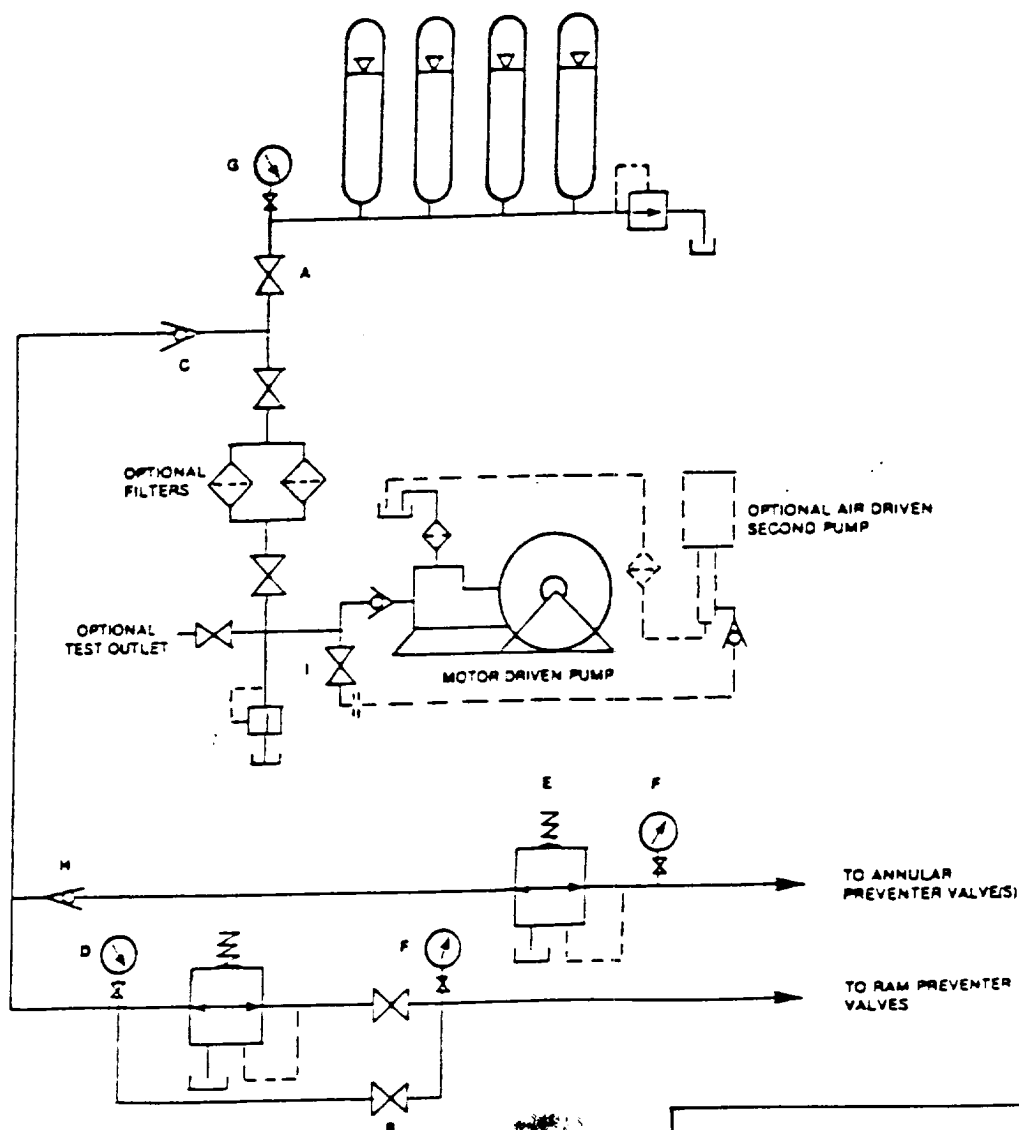


EXHIBIT "E-1"  
CHOKE MANIFOLD & CLOSING UNIT

PENWELL ENERGY, INC.  
COCHITI "28" FEDERAL # 2  
UNIT "L" SECTION 28  
T23S-R29E EDDY CO. NM

ROSWELL, NM  
BLM

OCT 9 1988

RECEIVED  
RECEIVED