

UNITED STATES
DEPARTMENT OF THE INTERIOR
BUREAU OF LAND MANAGEMENTN. M. G. Operations Division
811 S. 1ST ST.
92 ARTESIA, N.M. 87003

APPLICATION FOR PERMIT TO DRILL OR DEEPEN

1a. TYPE OF WORK

DRILL ☐DEEPEN ☐

b. TYPE OF WELL

OIL
WELL ☐GAS
WELL ☐

OTHER

SINGLE
ZONE ☐MULTIPLE
ZONE ☐

2. NAME OF OPERATOR

PENWELL ENERGY, INC.

(BILL PIERCE) 915-683-2534

3. ADDRESS AND TELEPHONE NO.

600 NORTH MARIENFELD SUITE 1100 MIDLAND, TEXAS 79701

4. LOCATION OF WELL (Report location clearly and in accordance with any State requirements.)

At surface
1650' FWL & 1880' FNL SEC. 29 T22S-R26E UNIT "F" EDDY CO. NM

At proposed prod. zone SAME

14. DISTANCE IN MILES AND DIRECTION FROM NEAREST TOWN OR POST OFFICE*

Approximately 4 miles Northwest of Carlsbad New Mexico

15. DISTANCE FROM PROPOSED*

LOCATION TO NEAREST
PROPERTY OR LEASE LINE, FT.
(Also to nearest drlg. unit line, if any) 330'

16. NO. OF ACRES IN LEASE

40

17. NO. OF ACRES ASSIGNED
TO THIS WELL

40

18. DISTANCE FROM PROPOSED LOCATION*
TO NEAREST WELL, DRILLING, COMPLETED,
OR APPLIED FOR, ON THIS LEASE, FT.

NA

19. PROPOSED DEPTH

5000'

20. ROTARY OR CABLE TOOLS

ROTARY

21. ELEVATIONS (Show whether DF, RT, GR, etc.)

3391' GR.

22. APPROX. DATE WORK WILL START*

WHEN APPROVED

23.

PROPOSED CASING AND CEMENTING PROGRAM

SIZE OF HOLE	GRADE SIZE OF CASING	WEIGHT PER FOOT	SETTING DEPTH	QUANTITY OF CEMENT
25"	Conductor 20"	NA	40'	Cement to surface with Redi-mix
17 1/2"	H-40 13 3/8"	48	350'	400 Sx. circulate to surface
11"	J-55 8 5/8"	24	1650'	625 Sx. circulate to surface
7 7/8"	J-55 5 1/2"	15.5	5000'	650 Sx. estimate top of cement 1200'

1. Drill 25" hole to 40'. Set 40' of 20" conductor and cement to surface with Redi-mix.
2. Drill 17 1/2" hole to 350'. Run and set 350' of 13 3/8" 48# H-40 ST&C casing. Cement with 400 Sx. of Class "C" cement + 2% CaCl, circulate cement to surface.
3. Drill 11" hole to 1650'. Run and set 1650' of 8 5/8" 24# ST&C J-55 casing. Cement with 425 Sx. of Class "C" Halco Light + additives, tail in with 200 Sx. of Class "C" cement + 2% CaCl, circulate cement to surface.
4. Drill 7 7/8" hole to 5000'. Run and set 5000' of 5 1/2" J-55 15.5# ST&C casing. Cement with 400 Sx. of Class "C" Halco Light + additives, tail in with 250 Sx. of Class "C" + 2% CaCl, estimate top of cement 1200'.

IN ABOVE SPACE DESCRIBE PROPOSED PROGRAM: If proposal is to deepen, give data on present productive zone and proposed new productive zone. If proposal is to drill or deepen directionally, give pertinent data on subsurface locations and measured and true vertical depths. Give blowout prevention program, if any.

24.

SIGNED

TITLE Agent

DATE

10/23/98

(This space for Federal or State office use)

PERMIT NO.

APPROVAL DATE

Application approval does not warrant or certify that the applicant holds legal or equitable title to those rights in the subject lease which would entitle the applicant to conduct operations thereon.
CONDITIONS OF APPROVAL, IF ANY:

Acting

Assistant Field Office Manager.
Lands and Minerals

APPROVED BY

TITLE

DATE

*See Instructions On Reverse Side

Title 18 U.S.C. Section 1001, makes it a crime for any person knowingly and willfully to make to any department or agency of the United States any false, fictitious or fraudulent statements or representations as to any matter within its jurisdiction.

DISTRICT I
P.O. Box 198C, Hobbs, NM 88240

DISTRICT II
P.O. Drawer DD, Artesia, NM 88210

DISTRICT III
1000 Rio Brazos Rd., Aztec, NM 87410

State of New Mexico
Energy, Minerals and Natural Resources Department

Form C-102
Revised February 10, 1994
Instruction on back
Submit to Appropriate District Office
State Lease - 4 Copies
Fee Lease - 3 Copies

OIL CONSERVATION DIVISION

P.O. Box 2088
Santa Fe, New Mexico 87504-2088

☐ AMENDED REPORT

WELL LOCATION AND ACREAGE DEDICATION PLAT

API Number	Pool Code	Pool Name
	29665	HAPPY VALLEY-DELAWARE
Property Code	Property Name	Well Number
20473	Hackberry "29" Federal	5
OGRID No.	Operator Name	Elevation
147380	Penwell Energy Inc.	3391'

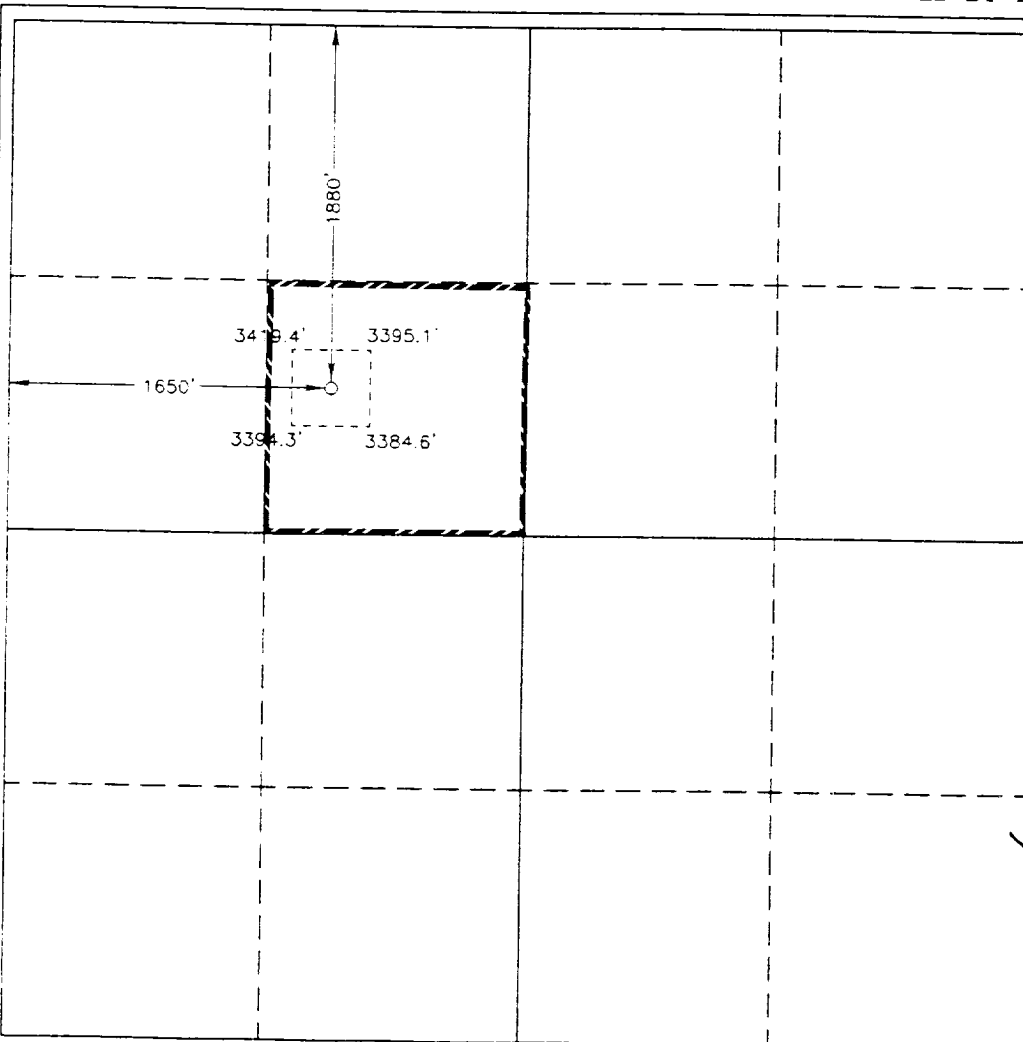
Surface Location

UL or lot No.	Section	Township	Range	Lot Idn	Feet from the	North/South line	Feet from the	East/West line	County
F	29	22 S	26 E		1880	North	1650	West	Eddy

Bottom Hole Location If Different From Surface

UL or lot No.	Section	Township	Range	Lot Idn	Feet from the	North/South line	Feet from the	East/West line	County
Dedicated Acres	Joint or Infill	Consolidation Code	Order No.						
40									

NO ALLOWABLE WILL BE ASSIGNED TO THIS COMPLETION UNTIL ALL INTERESTS HAVE BEEN CONSOLIDATED
OR A NON-STANDARD UNIT HAS BEEN APPROVED BY THE DIVISION



OPERATOR CERTIFICATION

I hereby certify the the information
contained herein is true and complete to the
best of my knowledge and belief.

Joe T. Janica
Signature
Joe T. JANICA
Printed Name
Agent
Title
10/23/98
Date

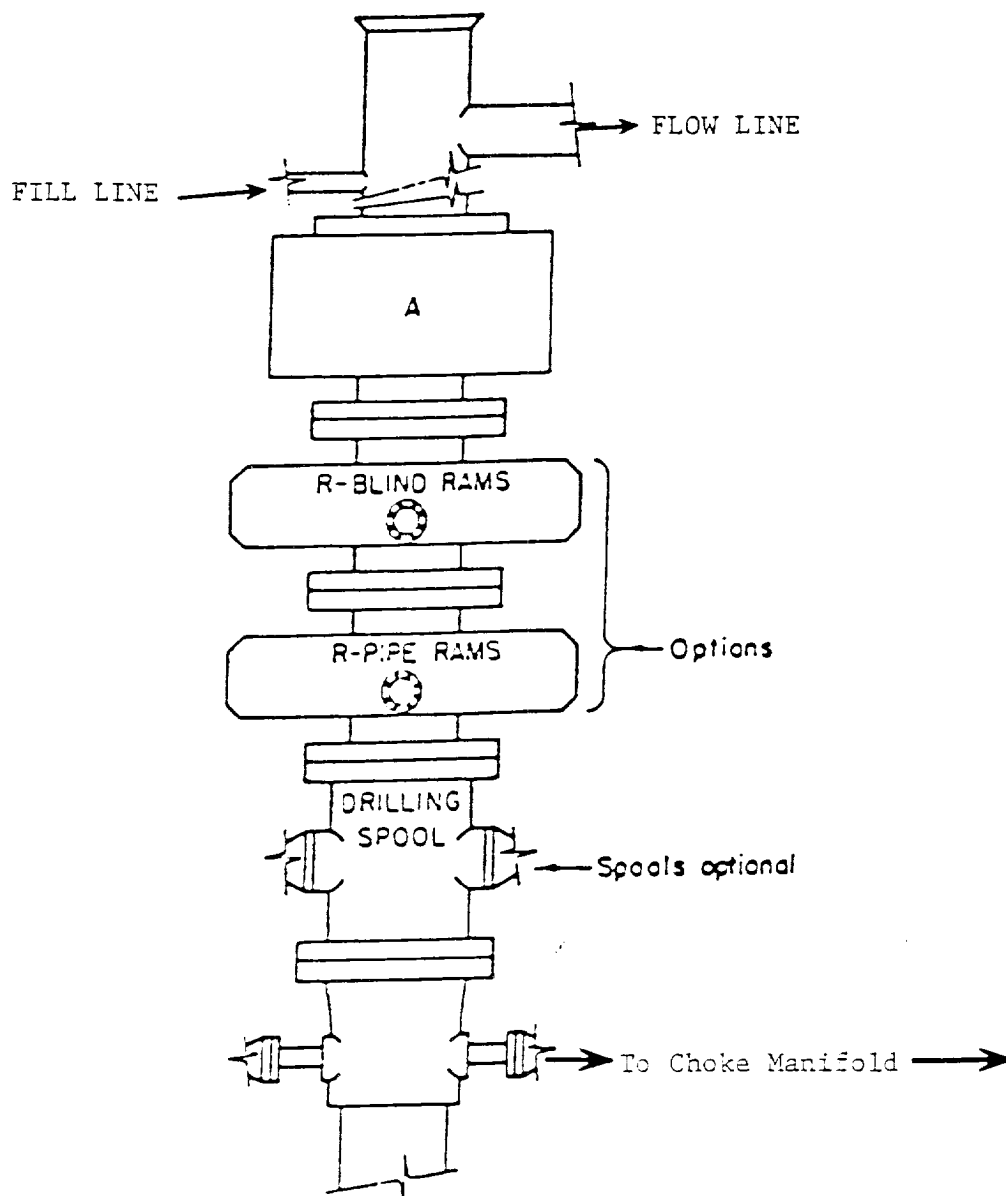
SURVEYOR CERTIFICATION

I hereby certify that the well location shown
on this plat was plotted from field notes of
actual surveys made by me or under my
supervision and that the same is true and
correct to the best of my belief.

October 13, 1998

Date Surveyed
Signature & Seal of
Professional Surveyor
W.O. No. 84550
Certificate No. GONY Jones 7977
DASH SURVEYS

EXHIBIT "A"



ARRANGEMENT SRRA

900 Series
3000 PSI WP

EXHIBIT "E"
B.O.P. SKETCH TO BE USED ON

PENWELL ENERGY, INC.
HACKBERRY "29" FEDERAL # 5
UNIT "F" SECTION 29
T22S-R26E EDDY CO. NM

